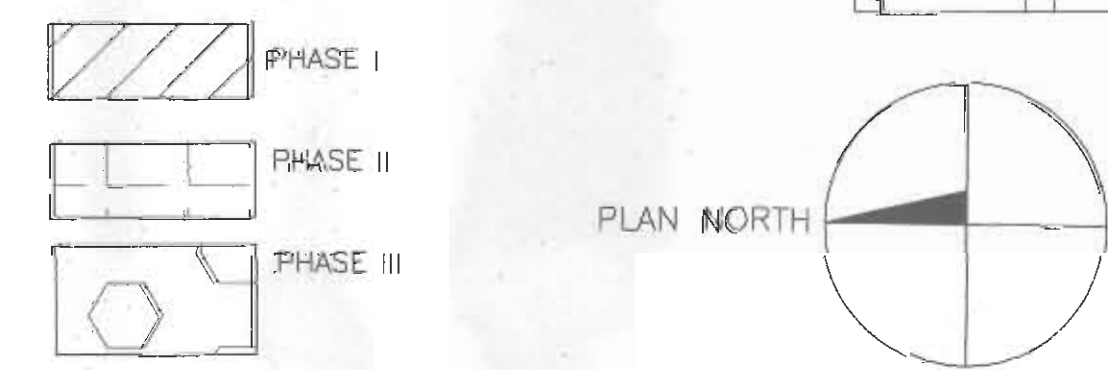
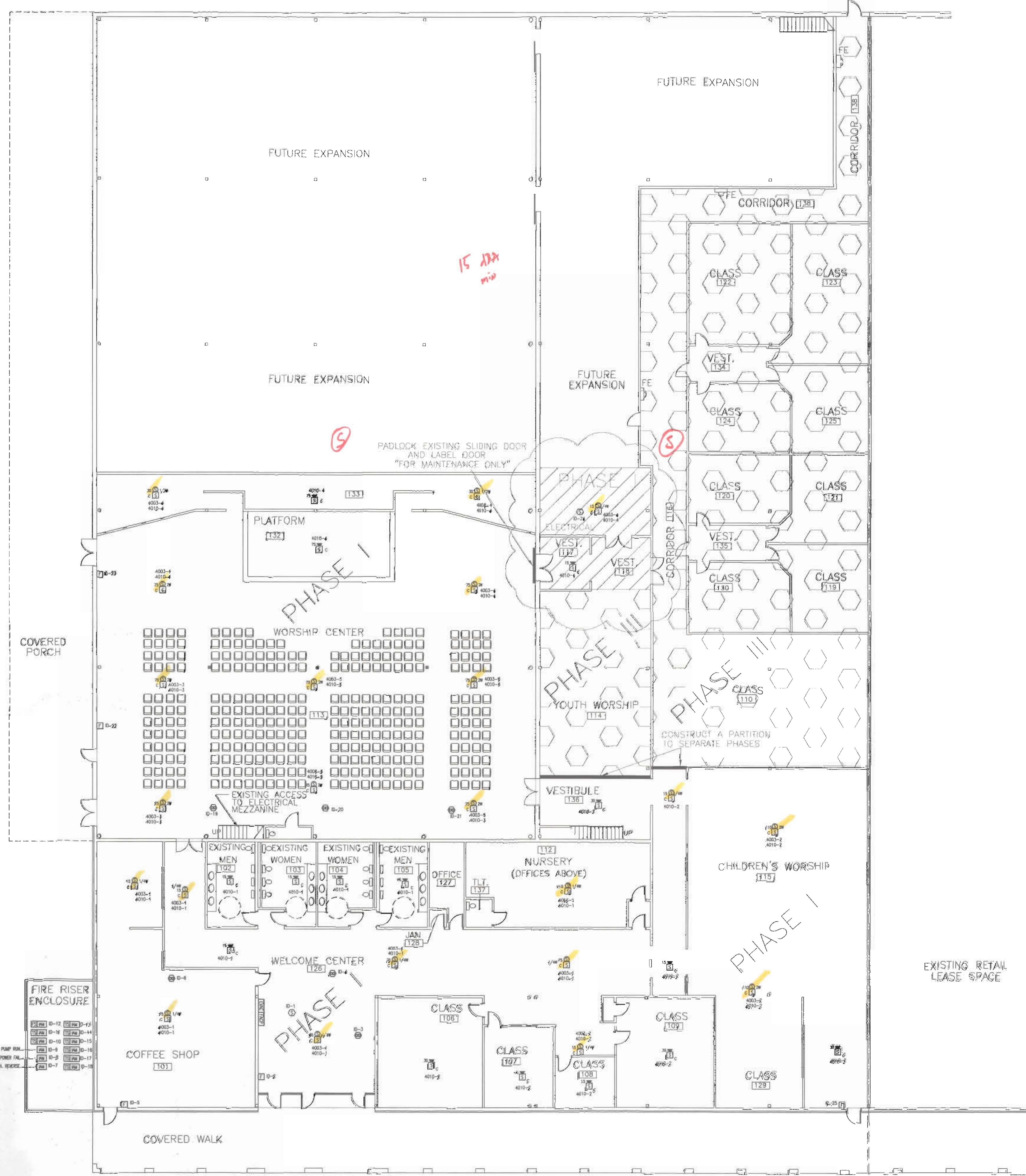
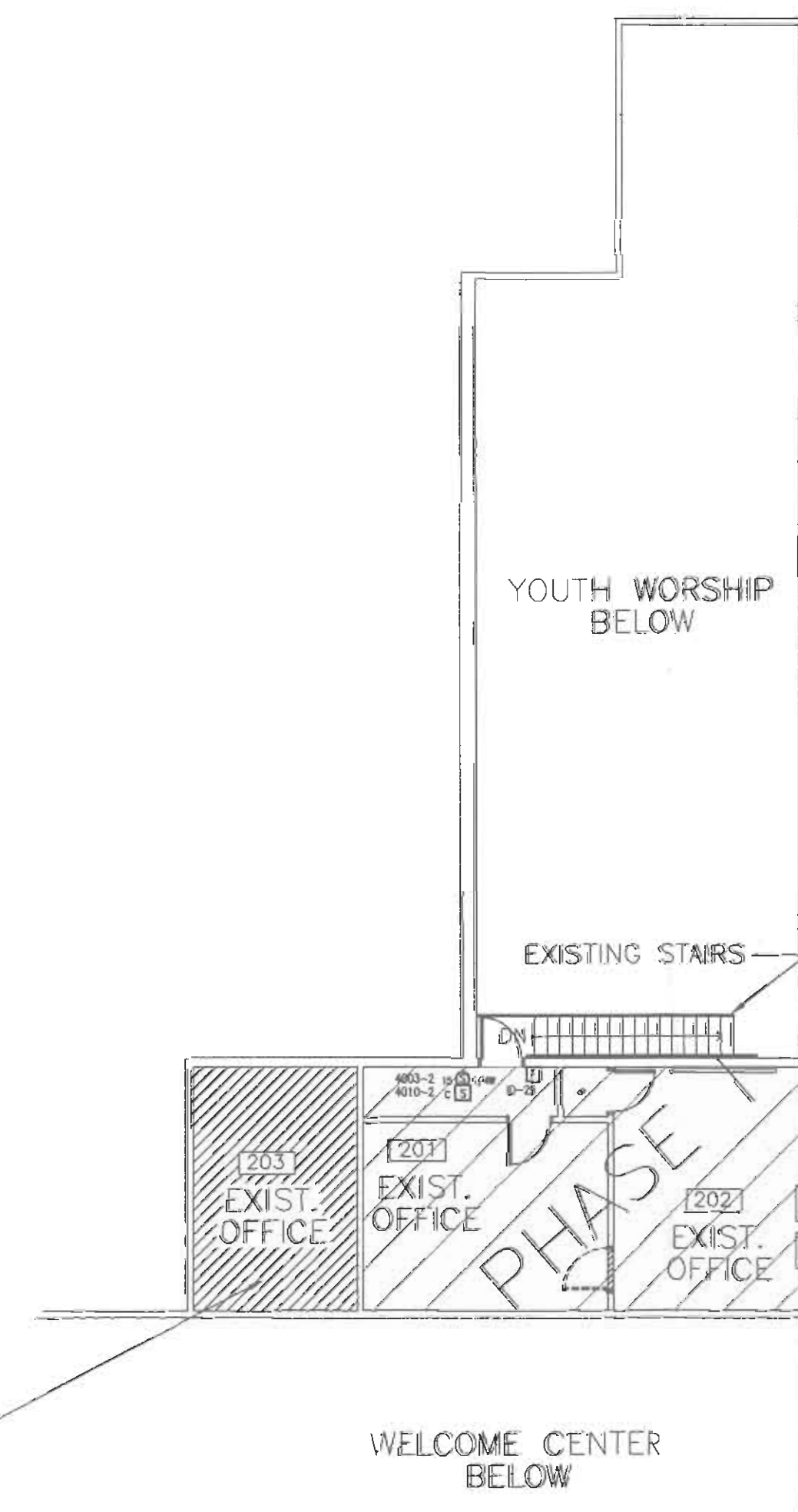


GENERAL NOTES:

1. CONTRACTOR SHALL CONSTRUCT TEMP PARTITIONS AT INDICATED LOCATIONS TO KEEP GENERAL POPULATION FROM ENTERING AREAS THAT ARE NOT CURRENTLY ALARMED.

DAMMON ENGINEERING INC
 Date: 9/23/09 Project: NorthShore Church
 Reviewed as Noted:
 Revises and Resubmit:
 Rejected:
 Other:
 Corrections or comments made on the shop drawings during this review do not relieve the contractor from compliance with requirements of the drawings and specifications. This check is only for review of the general conformance with the design concept of the project and general compliance with the information given in the contract documents. This contractor is responsible for confirming and correlating all quantities and dimensions, selecting fabrication processes and techniques of construction, coordinating his or her work with that of all other trades and performing all in a safe and satisfactory manner.
 Submittal Item: _____ Comments _____



tyco Fire & Security		SimplexGrinnell	
6000 JEFFERSON HWY SUITE A BARRANVILLE, LA 70123		SALES: 504-736-0104 FAX: 504-736-5292	
NO.	DATE	REVISION DESCRIPTION	
1	9/22/09	Brighten Change	
FIRE ALARM PLAN		NORTHSHORE CHURCH	
SCALE: 3/32" = 1'-0"		SHUELL LA	
DRAWN BY:	DATE:		
REV	9/2/09		
DESIGNED BY:	DATE:		
APPROVED BY:	DATE:		
PROJECT NUMBER:	943715761		
FILENAME:	NSHORE-15WC		
SHEET NUMBER:	4		