

**DAMMON**  
ENGINEERING, INC.

CHIEF ENGINEER  
EMMETT  
DAMMON, P.E.

CHIEF ARCHITECT  
ROBERT  
WILTSE

554 OLD SPANISH TRAIL  
SLIDELL, LA. 70458  
OFFICE: 985-649-5832  
FAX: 985-641-5950

WEBSITE:  
WWW.DAMMONENGINEERING.COM

EMAIL:  
DAMMONENG@BELLSOUTH.NET

ARCHITECTURE  
ENGINEERING  
STUDIES  
PLANNING  
INVESTIGATION  
EXPERT WITNESS

NEW  
CHURCH

FIRST BAPTIST  
CHURCH  
64541 HWY 308 I  
PEARL RIVER, LA  
70452

POWER  
PLAN

REV:

SCALE: AS NOTED

JOB#: 2108

DATE: 04-19-11

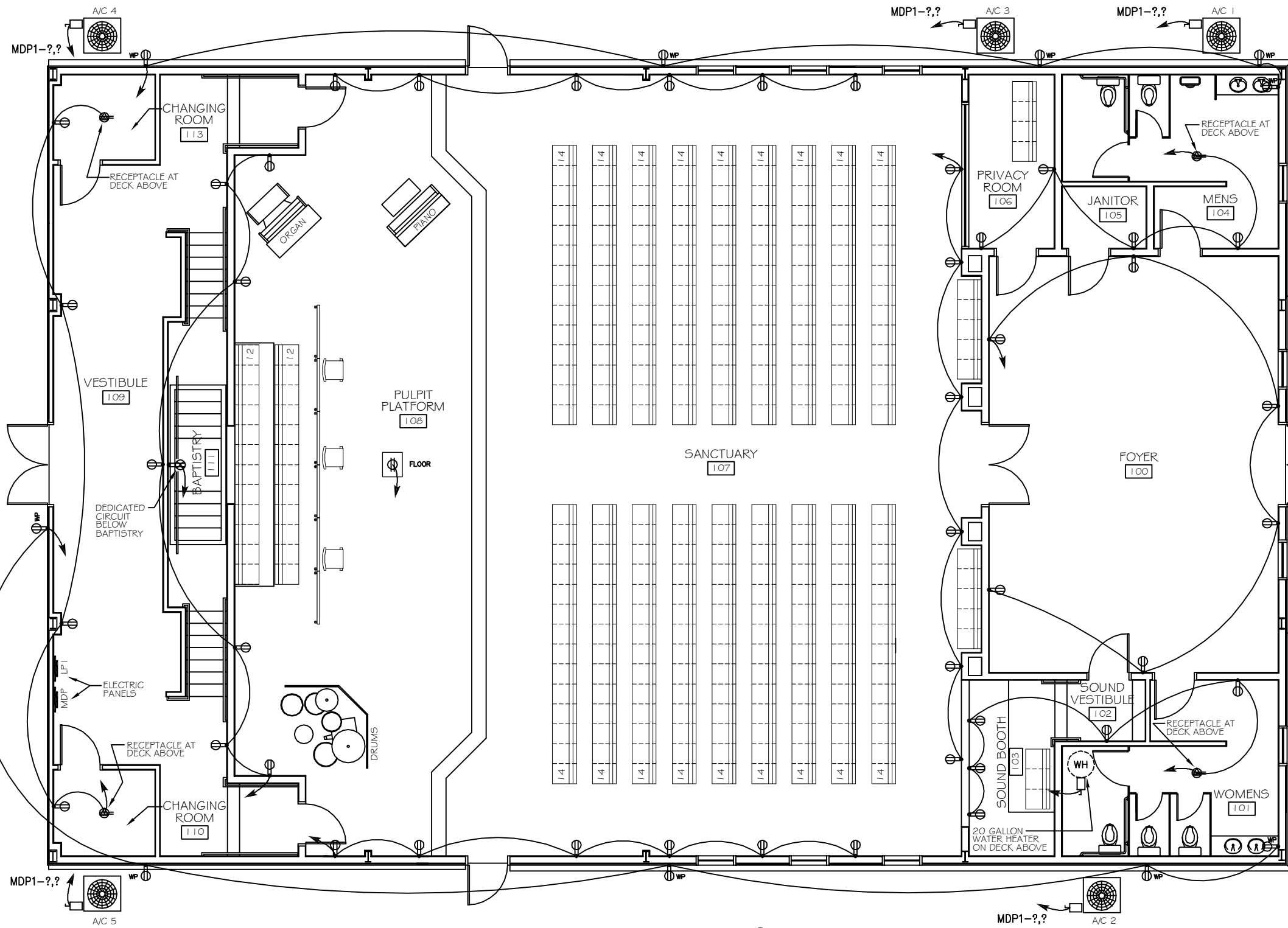
SHEET

E-1

OF

**LEGEND**

- ⊕ - RECEPTACLE 20A 115V
- ⊕ - GFI RECEPTACLE 20A
- ⊕ - WEATHER PROOF GFI RECEPTACLE 20A
- ⊕ - RECEPTACLE 20A AT DECK ABOVE
- ⊕ - FLOOR RECEPTACLE 20A
- ⊕ - DEDICATED BAPTISTRY CIRCUIT IN WALL BENEATH BAPTISTRY, 20A 115V
- ⊕ - DISCONNECT
- ⊕ - POWER PANEL



ELECTRICAL POWER PLAN  
SCALE: 1/4"=1'

CLECO Power LLC - Electrical Load Summary

Project Name: First Baptist Church  
Project Address: 64541 Highway 308 I  
City / Town: St. Tammany Parish - Pearl River, Louisiana

Intended Use: Church  
Requested Service: \_\_\_\_\_ Volts \_\_\_\_\_ Phase \_\_\_\_\_ Wires  
Service Entrance Size: \_\_\_\_\_ Amps  
HVAC Tonnage: \_\_\_\_\_ Tons  
Largest Motor: N/A HP (Note: Motors above 20 hp may require reduced voltage starting and are never recommended for use with 120/240V, 3 O, 4W services.)

Total Building Square Footage: \_\_\_\_\_ Square Feet  
Individual Unit Square Footage: N/A Square Feet (Multiple Occupancy)  
Individual Unit Designation: N/A (Multiple Occupancy)

LOAD SOURCE	1Ø - kVA	3Ø - kVA	1Ø - kW	3Ø - kW
Building Lighting	-	-	or	-
Electric Water Heating	-	-	or	-
Heat Pumps	-	-	or	-
Supplemental Heat System	-	-	or	-
Air Conditioning	-	-	or	-
Electrical Heating (Primary) - AHUs	-	-	or	-
Cooking	-	-	or	-
Refrigeration	-	-	or	-
Receptacles (Standard)	-	-	or	-
Receptacles (Computer)	-	-	or	-
Total Motors (Exclude HVAC)	-	-	or	-
Parking Lot / Exterior Lighting	-	-	or	-
Miscellaneous -	-	-	or	-
Other (Specify)	-	-	or	-

PRELIMINARY (NOT FOR CONSTRUCTION)

This document was created with Win2PDF available at <http://www.win2pdf.com>.  
The unregistered version of Win2PDF is for evaluation or non-commercial use only.  
This page will not be added after purchasing Win2PDF.