

N.F.P.A. 101 - 2009 EDITION

OCCUPANCY: ASSEMBLY - CHAPTER 12 (6.1.2)

OCCUPANT LOAD (TABLE 7.3.1.2):

- ASSEMBLY (CONCENTRATED, NO FIXED SEATING) @ 1 PERSON/7 NET SF
2,366 SF/7 = 338 PERSONS
- ASSEMBLY (LESS CONCENTRATED, NO FIXED SEATING) @ 1 PERSON/15 SF
685 SF/15 = 46 PERSONS
- STAGES @ 1 PERSON/15 SF
1,011 SF/15 = 68 PERSONS
- BUSINESS @ 1 PERSON/100 SF
1,936 SF/100 = 20 PERSONS

TOTAL OCCUPANCY = 472 PERSONS

CLASSIFICATION OF HAZARD OF CONTENTS (12.1.5): ORDINARY PER SECTION 6.2

- MINIMUM CONSTRUCTION REQUIREMENTS (TABLE 12.1.6):
- CONSTRUCTION TYPE: II (000) - 1 STORY
- SPRINKLERED BUILDING - YES
- PERMITTED FOR ASSEMBLY OF ANY OCCUPANT LOAD

CAPACITY OF MEANS OF EGRESS (12.2.2.3):

- TABLE 12.2.3.2 (EGRESS WIDTHS FOR ROOMS WITH THEATER STYLE SEATING ARRANGED IN ROWS): STAIRS: 0.3 IN/PERSON; PASSAGEWAYS, RAMPS, DOORWAYS: 0.22 IN/PERSON
- A.12.2.3.2: COMPLY WITH SECTION 7.3 FOR ALL OTHER COMPONENTS
- TABLE 7.3.3.1: STAIRS: 0.3 IN/PERSON; LEVEL COMPONENTS, RAMPS, DOORWAYS: 0.2 IN/PERSON

- 12.2.3.6 (2) REQUIRED MAIN ENTRANCE/EXIT TO ACCOMMODATE ONE-HALF OF THE TOTAL OCCUPANT LOAD (236 PERSONS)
- SANCTUARY DOORS: 236 PERSONS X 0.22 IN/PERSON = 52" REQUIRED/68" PROVIDED
- FOYER DOORS: 236 PERSONS X 0.2 IN/PERSON = 48" REQUIRED/68" PROVIDED

MINIMUM NUMBER OF EXITS: 2 PER 12.2.4/7.4.1.1

- TRAVEL DISTANCE TO EXITS (SPRINKLERED)
- DEAD END CORRIDOR: 20' MAX. (12.2.5.1.3)
- COMMON PATH OF TRAVEL FOR ANY NUMBER OF OCCUPANTS (CPT): 20' MAX. (12.2.5.1.2)
- TRAVEL DISTANCE: 250' MAX. (12.2.6.2)
- INTERIOR FINISH (12.3.3): COMPLY WITH TABLE A.10.2.2
- EXITS: A, I OR II
- EXIT ACCESS CORRIDORS: A OR B, I OR II
- OTHER SPACES: A, B, OR C
- DETECTION/ALARM/COMMUNICATION SYSTEM (12.3.4.1.1): REQUIRED, COMPLY WITH SECTIONS 12.3.4 AND 9.6.1
- EXTINGUISHMENT REQUIREMENTS (12.3.5.2): REQUIRED

INTERNATIONAL BUILDING CODE 2006 EDITION

OCCUPANCY: ASSEMBLY GROUP A-3 (SECTION 303)

- HEIGHT AND AREA LIMITATIONS (TABLE 503):
- CONSTRUCTION TYPE II B
- MAXIMUM HEIGHT = 55'-0"
- MAXIMUM STORIES = 2
- MAXIMUM AREA PER STORY = 9,500 SF

FIRE RESISTANT RATINGS (TABLE 601):

- STRUCTURAL FRAME: 0
- BEARING WALLS INTERIOR/EXTERIOR: 0
- NONBEARING WALLS AND PARTITIONS EXTERIOR: 0
- NONBEARING WALLS AND PARTITIONS INTERIOR: 0
- FLOOR CONSTRUCTION: 0
- ROOF CONSTRUCTION: 0

INTERIOR WALL AND CEILING FINISH REQUIREMENTS (TABLE 803.5 NONSPRINKLERED):

- EXIT ENCLOSURES AND EXIT PASSAGEWAYS: A
- CORRIDORS: B
- ROOMS AND ENCLOSED SPACES: C

AUTOMATIC SPRINKLER GROUP A-3 (903.2.1.3): REQUIRED

OCCUPANT LOAD:

SEE NFPA 101 OCCUPANT LOAD

TOTAL OCCUPANCY = 472 PERSONS

- CAPACITY OF MEANS OF EGRESS (SPRINKLERED)
- TABLE 1005.1: STAIRWAYS=0.2 IN/PERSON; OTHER EGRESS COMPONENTS=0.15 IN/PERSON

CORRIDOR WIDTH (1017.2): MINIMUM 44"

CORRIDOR FIRE RESISTANCE RATING (TABLE 1017.1)

- OCCUPANCY A, OCCUPANT LOAD > 30 (YES), RATING WITH SPRINKLER = 0

AREA CALCULATIONS

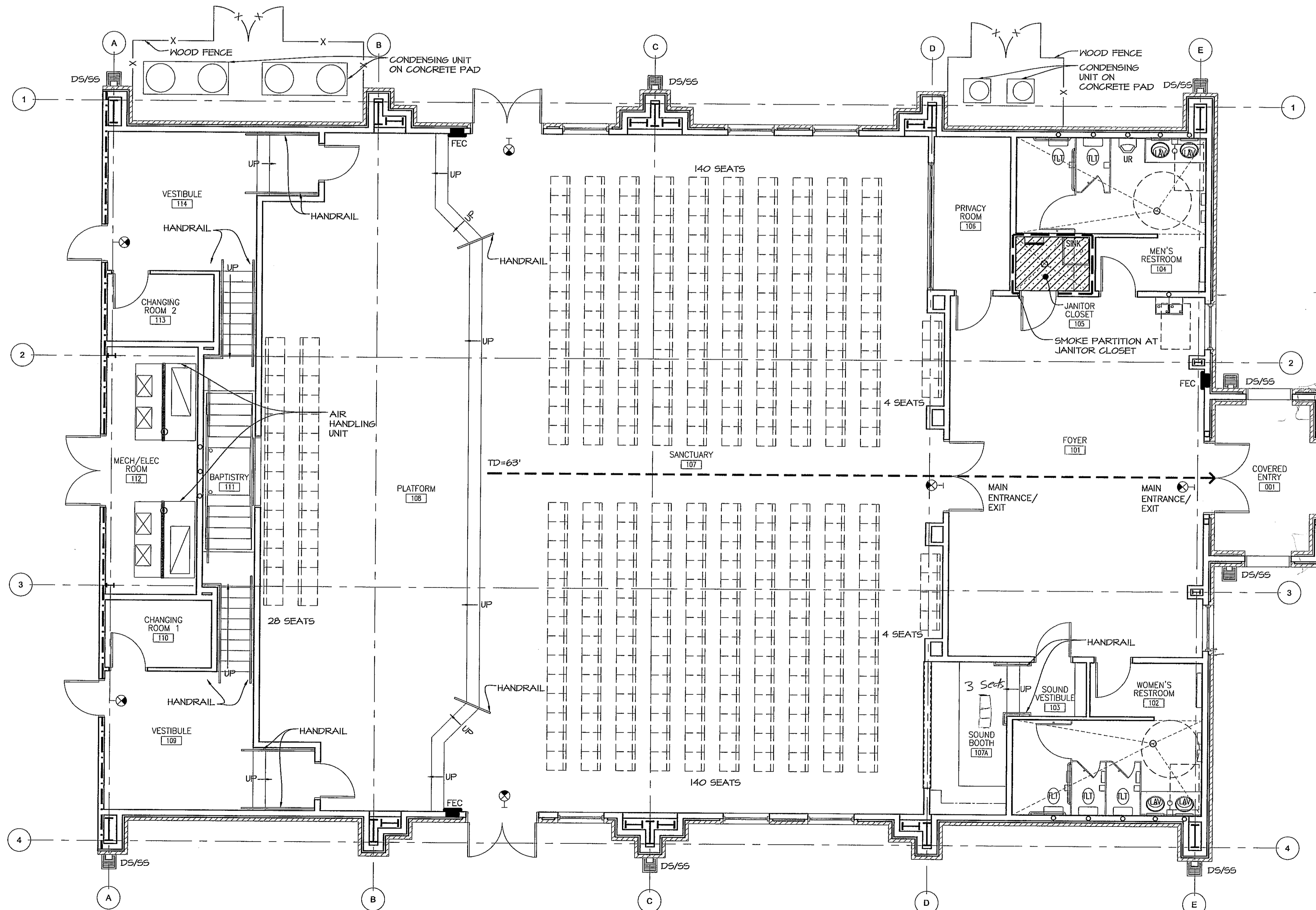
TOTAL CONDITIONED AREA: 5,998 SQ.FT.

NOTES

- EXIT DEVICES TO BE CENTERED OVER DOOR.
- SEE ELECTRICAL PLAN FOR ADDITIONAL LIFE SAFETY DEVICES.

LEGEND

- METAL STUDS
- BRICK
- SMOKE PARTITION PER NFPA 8.4 AND IBC SECTION 710
- 1 HOUR RATING - UL DESIGN NO. U419 5/8" TYPE-X GYPSUM SHEATHING ON EXTERIOR SIDE, 5/8" TYPE-X GYPSUM BOARD ON INTERIOR SIDE
- TRAVEL DISTANCE TO EXIT (TD)
- EXIT LIGHT SIGN (SEE ELECTRICAL ALSO)
- FIRE EXTINGUISHER CABINET - SEMI RECESSED
- SMOKE TIGHT CEILING

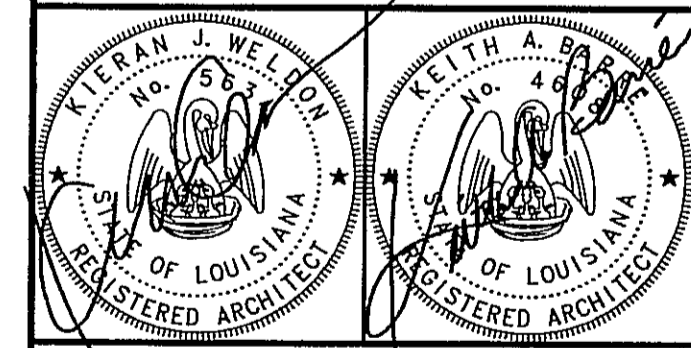
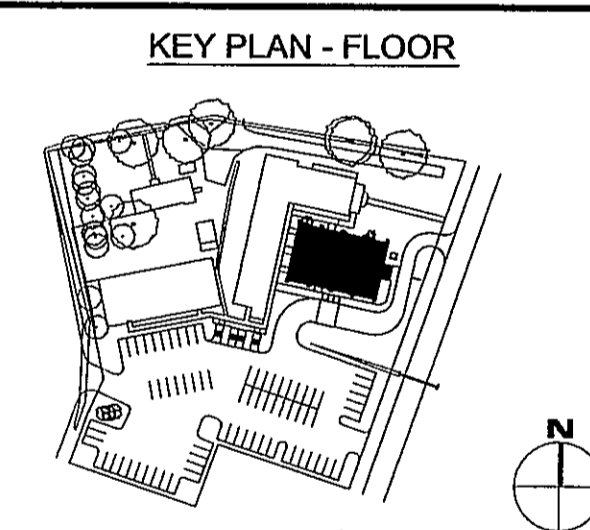


1 LIFE SAFETY PLAN
SCALE: 3/16" = 1'-0"

fl+
WB
fautleroy latham weldon barré architects
a professional corporation in continuous practice since 1981
architecture planning interiors sustainable design consulting
229 ST. JOHN LANE
COVINGTON, LA 70433
985-893-4100

A NEW CHURCH BUILDING FOR
FIRST BAPTIST CHURCH PEARL RIVER

FIRST BAPTIST CHURCH
64541 HIGHWAY 3081
PEARL RIVER, LOUISIANA 70452



THESE DRAWINGS ARE THE SOLE PROPERTY OF FAUTLEROY LATHAM WELDON BARRÉ ARCHITECTS, APC, AND ARE ISSUED AS INSTRUMENTS OF SERVICE. THESE DRAWINGS SHALL NOT BE COPIED, REPRODUCED OR USED IN ANY MANNER WITHOUT WRITTEN CONSENT OF FAUTLEROY LATHAM WELDON BARRÉ ARCHITECTS, APC.

Issue	Date	Remark

LIFE SAFETY PLAN

CONSTRUCTION DOCUMENTS

Job No	209073.02	Sheet No	
Drawn by	NGP	A0.3.0	
Checked by	KJW		
Date	18 JAN. 11		