

DAMMON
ENGINEERING, INC.

CHIEF ENGINEER
EMMETT
DAMMON, P.E.

CHIEF ARCHITECT
ROBERT
WILTSE

554 OLD SPANISH TRAIL
SLIDELL, LA. 70458
OFFICE: 985-649-5832
FAX: 985-641-5950

WEBSITE:
WWW.DAMMONENGINEERING.COM

EMAIL:
DAMMONENG@BELLSOUTH.NET

ARCHITECTURE
ENGINEERING
STUDIES
PLANNING
INVESTIGATION
EXPERT WITNESS

LIVING THE WORD
INTERNATIONAL

2528
OLD SPANISH TRAIL
SLIDELL, LA
70461

BUILDING
SECTION

Robert Wiltse

REV:

SCALE: AS NOTED

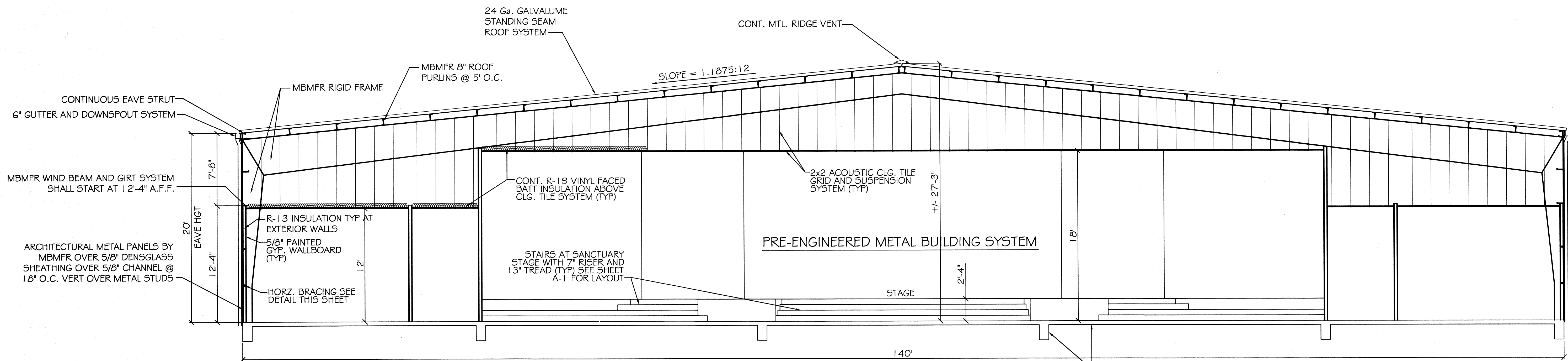
JOB#: 2128

DATE: 01-27-12

SHEET 4

A-2

OF 15



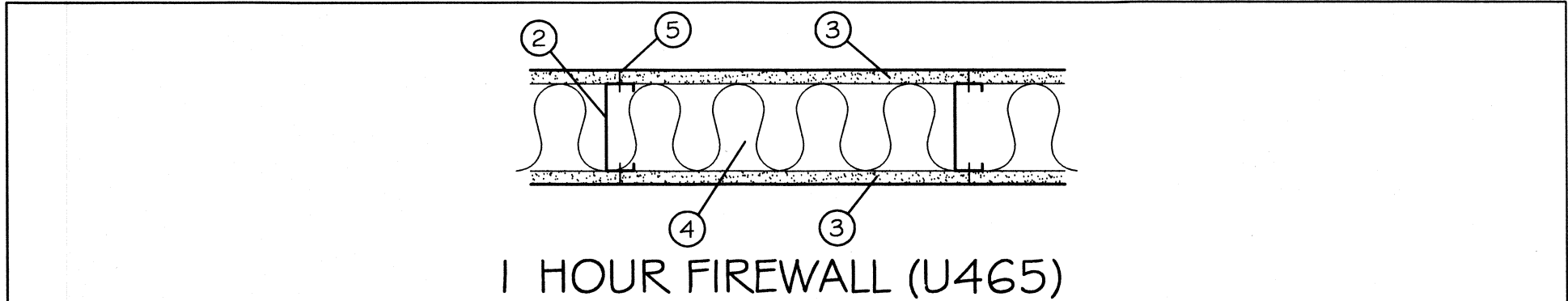
NOTE:
IN AREAS OF EXTERIOR STUCCO (SEE ELEVATIONS)
PROVIDE WALL SYSTEM AS FOLLOWS. SYNTHETIC
STUCCO FINISH OVER TYVEK STUCCO WRAP, OVER
DENSGLASS, OVER METAL STUD WALL SYSTEM.

SECTION
SCALE: 3/16" = 1'-0"
A
A1 A2

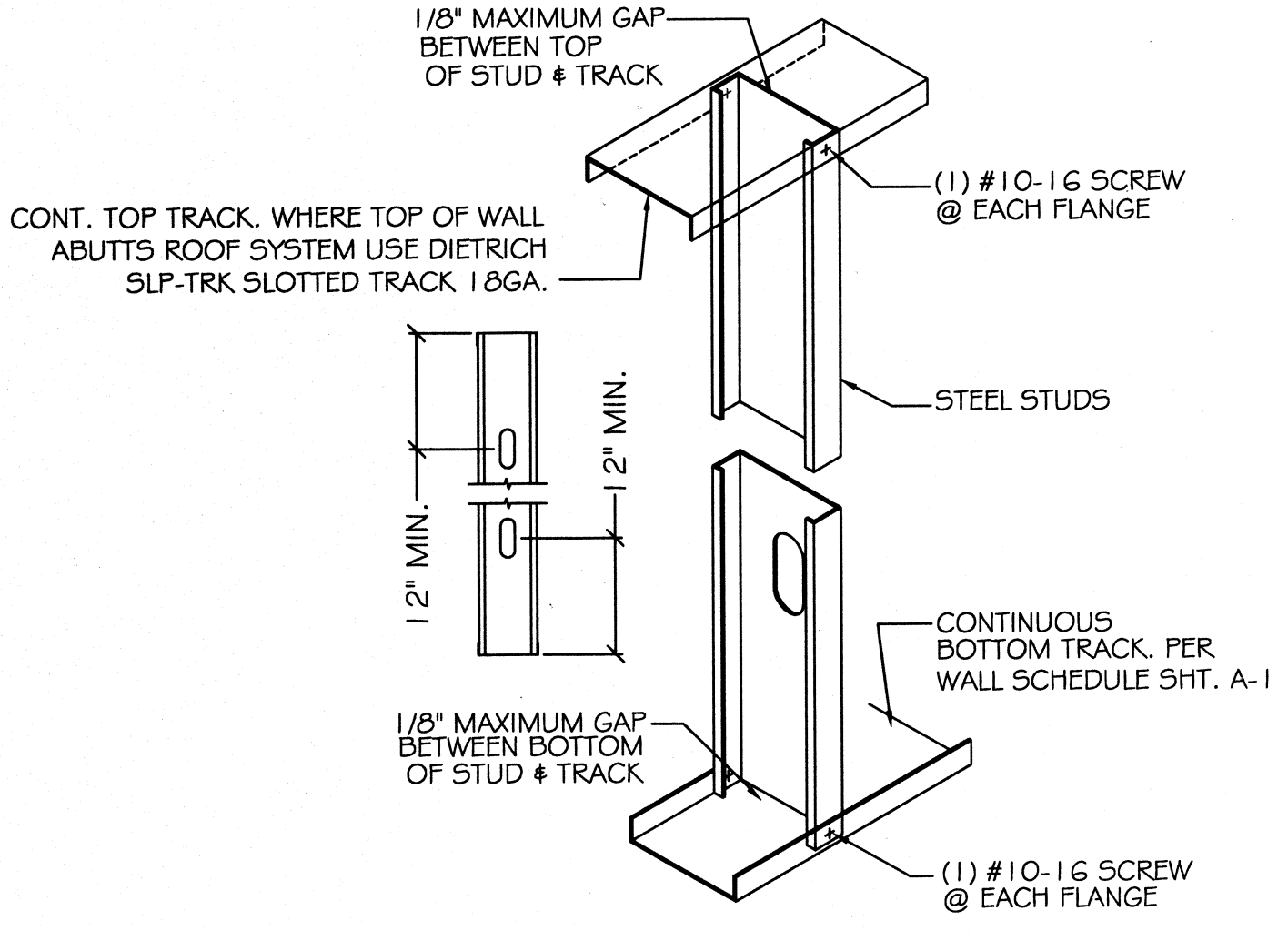
WINDBORNE DEBRIS PROTECTION
FASTENING SCHEDULE FOR
WOOD STRUCTURAL PANELS

FASTENER TYPE	FASTENER SPACING		
	PANEL SPAN ≤ 4 FOOT	4 FOOT PANEL SPAN ≤ 6 FOOT	6 FOOT PANEL SPAN ≤ 8 FOOT
2-1/2" #6 WOOD SCREWS	16"	12"	9"
2-1/2" #8 WOOD SCREWS	16"	16"	12"

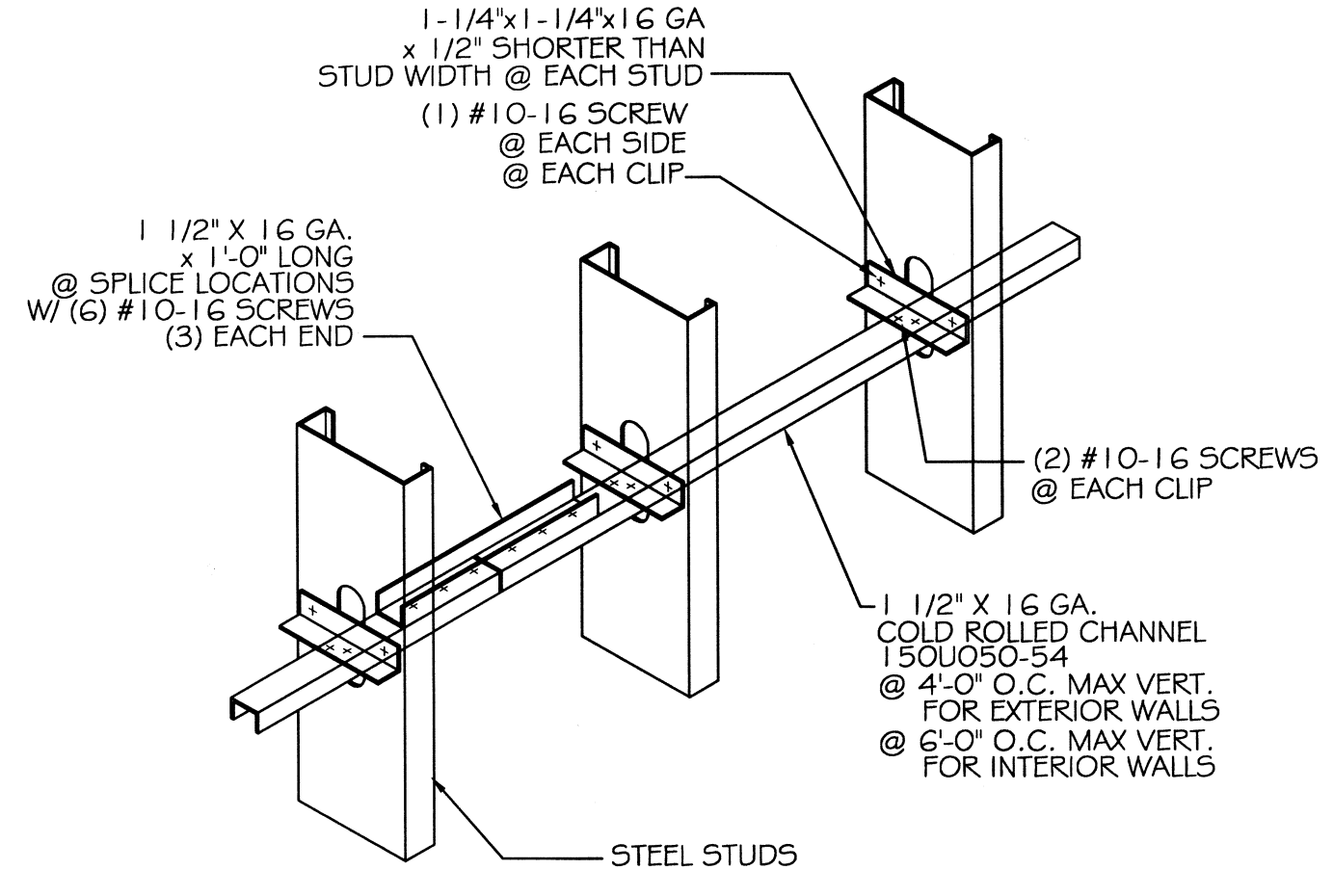
WINDOWS IN BUILDINGS LOCATED IN WIND BORNE DEBRIS REGIONS SHALL HAVE GLAZED OPENINGS PROTECTED FROM WINDBORNE DEBRIS. WOOD STRUCTURAL PANELS WITH A MIN. THICKNESS OF 7/16" AND A MAX. SPAN OF 8 FEET SHALL BE PERMITTED FOR OPENING PROTECTION IN ONE AND TWO STORY BUILDINGS. PANELS SHALL BE PRECUT TO COVER THE GLAZED OPENINGS WITH ATTACHMENT HARDWARE PROVIDED.



- UL465
- FLOOR AND CEILING RUNNER: (NOT SHOWN) 25 MSG MIN. GALV. STEEL 1" HIGH, RETURN LEGS 3-5/8" (MIN), ATTACHED TO FLOOR AND CEILING WITH FASTENERS AT 24" O.C.
 - STEEL STUDS: 3-5/8" WIDE (MIN.), 1-1/4" LEGS, 3/8" RETURN, FORMED OF 25 MSG GALV. STEEL, MAX. SPACING 24" O.C.
 - GYP. WALLBOARD: 5/8" THICK, 4' WIDE, ATTACHED TO STEEL STUDS AND FLOOR AND CEILING TRACK WITH 1" LONG TYPE "S" SELF-TAPPING STEEL SCREWS SPACED 8" O.C. ALONG EDGES OF BOARD AND 12" O.C. IN THE FIELD OF THE BOARD. JOINTS ORIENTED VERT. AND STAGGERED ON OPPOSITE SIDES OF THE ASSEMBLY.
 - BATTS AND BLANKETS: MINERAL WOOL INSULATION, PARTIALLY OR COMPLETELY FILLING STUD CAVITY.
 - JOINT AND TAPE COMPOUND: VINYL, DRY OR PREMIXED JOINT COMPOUND, APPLIED IN TWO COATS TO JOINTS AND SCREW HEADS; PAPER TAPE, 2" WIDE, EMBEDDED IN FIRST LAYER OF COMPOUND OVER ALL JOINTS. AS AN ALTERNATE, NOMINAL 3/32" THICK GYPSUM VENEER PLASTER MAY BE APPLIED TO THE ENTIRE SURFACE OF CLASSIFIED VENEER BASEBOARD. JOINT REINFORCED.



TRACK CONNECTION DETAIL
SCALE: N.T.S.



HORZ. BRACING DETAIL
SCALE: N.T.S.

REGISTERED PROFESSIONAL ARCHITECT
STATE OF MISSISSIPPI
NO. 13231
410793
BY ROBERT WILTSE