

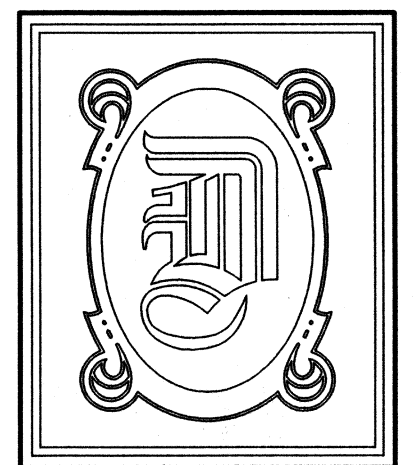
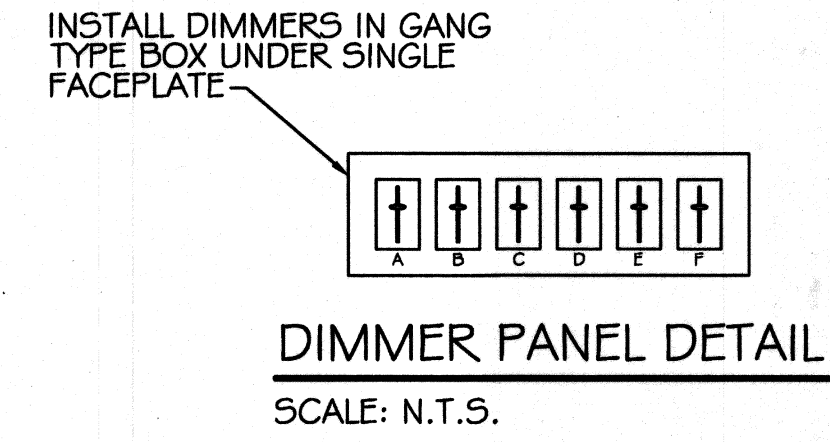
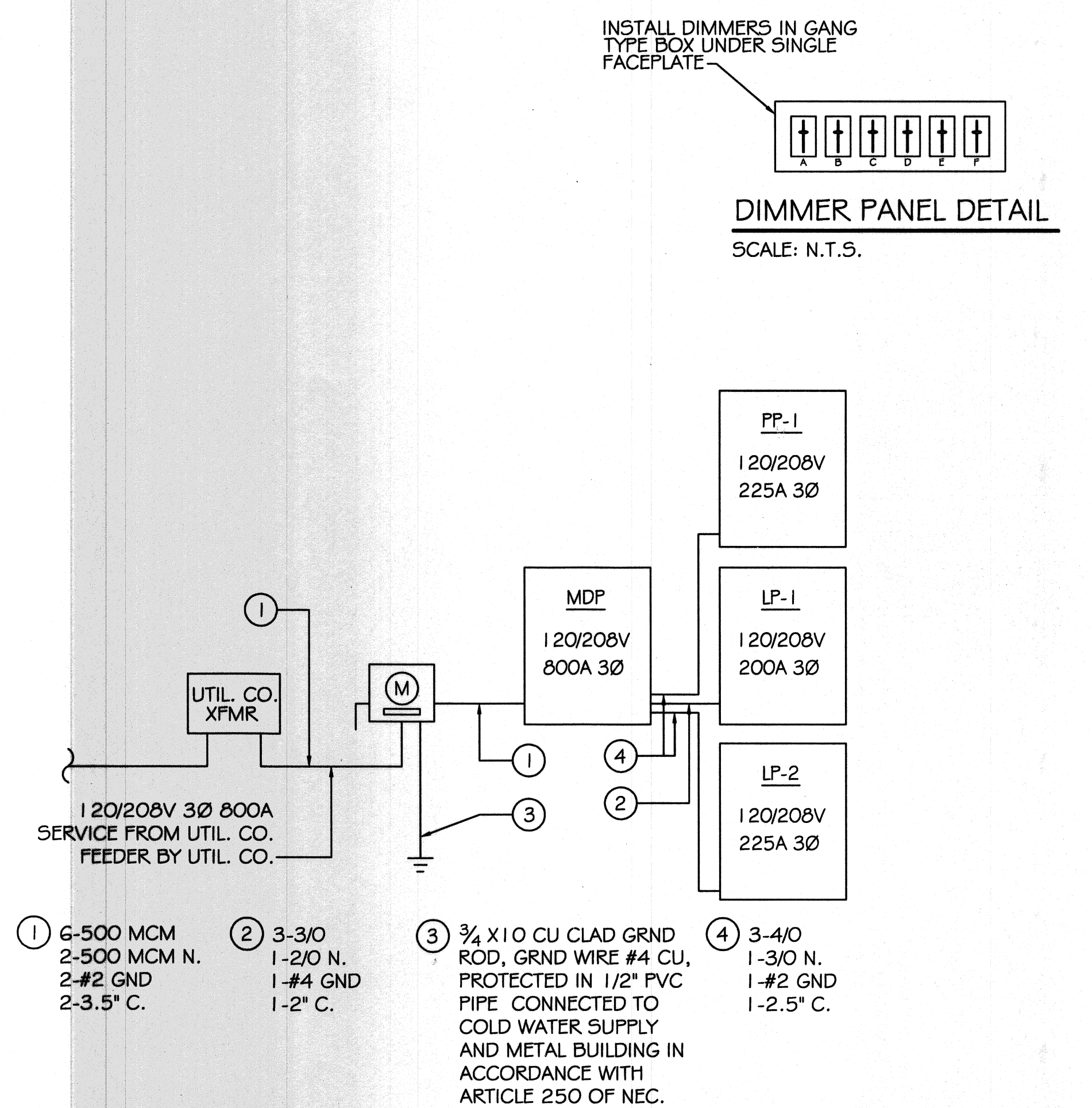
**LIGHTING PLAN NOTES:**

1. THEATRICAL LIGHTING BY OTHERS. PROVIDE EIGHT DEDICATED SINGLE PHASE 60 AMP CIRCUITS AND ONE 20 AMP DEDICATED EDISON CIRCUIT. ALL CIRCUITS IN LP-2.
2. PROVIDE ONE DEDICATED 20 AMP CIRCUIT FOR VIDEO EQUIPMENT. TWO LOCATIONS, SEE PLAN.
3. LIGHTING DIMMER PANEL. PROVIDE SIX 2000 WATT DIMMER CIRCUITS.

**LIGHTING PLAN**  
SCALE: 1/8"=1'-0"

LIGHTING FIXTURE SCHEDULE			
LABEL	DESCRIPTION	MANUFACTURER PRODUCT #	LAMPS
F1	6" RECESSED BLACK BAFFLE DOWNLIGHT, WHITE TRIM FLANGE	ELITE LIGHTING BG / B632P WH	90PAR/H/FL25 130V
F2	2x4 RECESSED FLOURESCENT MTL. DIFFUSER	LITHONIA LIGHTING 2AV G 2 32 MDR GEB10IS	2-T8 32W FLOURESCENT 120V
F3	8" OPEN DOWNLIGHT SPECULAR REFL. W/ WHT FLANGE	LITHONIA LIGHTING 8VF 1/42TRT MVOLT 802AZ TRW	1-42W COMPACT FLOURESCENT 120V
F4	GENERAL PURPOSE T8 TROFFER 2x4	LITHONIA LIGHTING 2GT8 3 32 A1 2 MVOLT 1/3 GEB10IS	3-T8 32W FLOURESCENT 120V
F5	2x4 PARAMAX PARABOLIC TROFFER	LITHONIA LIGHTING 2PM3N 3 32 18LD MVOLT 1/3 GEB10IS	3-T8 32W FLOURESCENT 120V
F6	SQUARE BASKET WRAP, 8 3/8" 2LP T8 PRISMATIC ELEC. BALLAST	LITHONIA LIGHTING SB 2 32 MVOLT GEB10IS	2-32W T8 FLOURESCENT 120V
F7	COMMERCIAL WALL BRACKET 48" LONG	LITHONIA LIGHTING WC 2 32 MVOLT GEB10IS	2-T8 32W FLOURESCENT 120V
F8	ONE LAMP STRIP WITH ASSYMETRIC REFLEC. - FLOURESCENT	LITHONIA LIGHTING Z 1 32 MVOLT Z8A9R48 GEB10IS	1-T8 32W FLOURESCENT 120V
F9	FLOODLIGHT, TA DISTRIBUTION - METAL HALIDE	LITHONIA LIGHTING TFM 100M TA TB FTS DDB LPI	1-100W CLEAR ED17 METAL HALIDE
F10	BUILDING MOUNTED LUMINAIRE METAL HALIDE	LITHONIA LIGHTING TWP 150M TB LPI	1-150W CLEAR ED-28 METAL HALIDE
F11	CLG. MOUNTED COMPACT FLOURESCENT KEYLESS	LEVITON 9860	1-13W GU24 COMPACT FLOUR.
EM	EMERGENCY EGRESS LIGHT W/ 90 MIN. BATTERY BACKUP	EELP LIGHTING EM1	2-5.4W HALOGEN
EX	WALL MOUNTED LED EXIT SIGN	EELP LIGHTING XE 2 R W EM	LED
EM1	WET LOCATION LISTED WALL MTD. EMER. EGRESS LIGHT	EELP LIGHTING DEM WH	2-6W ZENON

NOTES:  
1. CONNECT ALL EMERGENCY / EXIT LIGHT FIXTURES TO NEAREST CONSTANT POWER SOURCE.



**DAMMON ENGINEERING, INC.**

CHIEF ENGINEER  
EMMETT DAMMON, P.E.

CHIEF ARCHITECT  
ROBERT WILTSE

554 OLD SPANISH TRAIL  
SLIDELL, LA. 70458  
OFFICE: 985-649-5832  
FAX: 985-641-5950

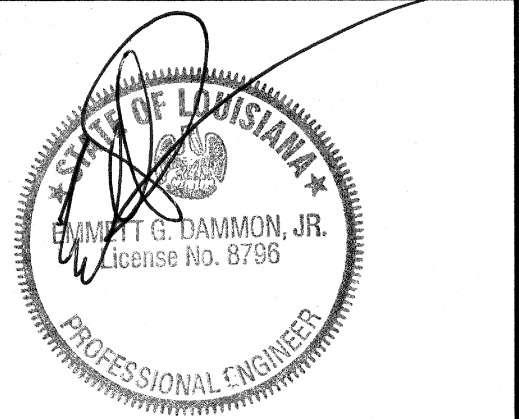
WEBSITE:  
WWW.DAMMONENGINEERING.COM  
EMAIL:  
DAMMONENG@BELLSOUTH.NET

- ARCHITECTURE
- ENGINEERING
- STUDIES
- PLANNING
- INVESTIGATION
- EXPERT WITNESS

LIVING THE WORD INTERNATIONAL

2528  
OLD SPANISH TRAIL  
SLIDELL, LA  
70461

LIGHTING PLAN



REV:

SCALE: AS NOTED

JOB#: 2128

DATE: 01-27-12

SHEET 18

E-2