

DAMMON
ENGINEERING, INC.

CHIEF ENGINEER
EMMETT
DAMMON, P.E.

CHIEF ARCHITECT
ROBERT
WILTSE

1095 FLORIDA AVENUE
SLIDELL, LA. 70458
OFFICE: 985-649-5832
FAX: 985-641-5950

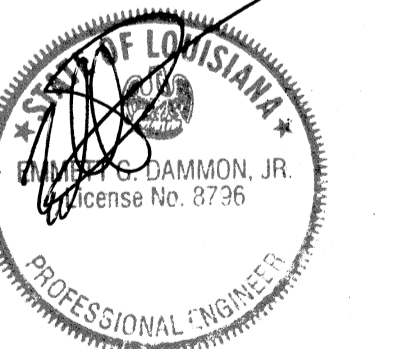
WEBSITE:
WWW.DAMMONENGINEERING.COM

EMAIL:
DAMMONENG@BELLSOUTH.NET

ARCHITECTURE
ENGINEERING
STUDIES
PLANNING
INVESTIGATION
EXPERT WITNESS

BRIAN FONG M.D. Inc.
MEDICAL OFFICE
2965 GAUSE BLVD.
SLIDELL, LA

SITE
PLAN



REV:

SCALE: AS NOTED

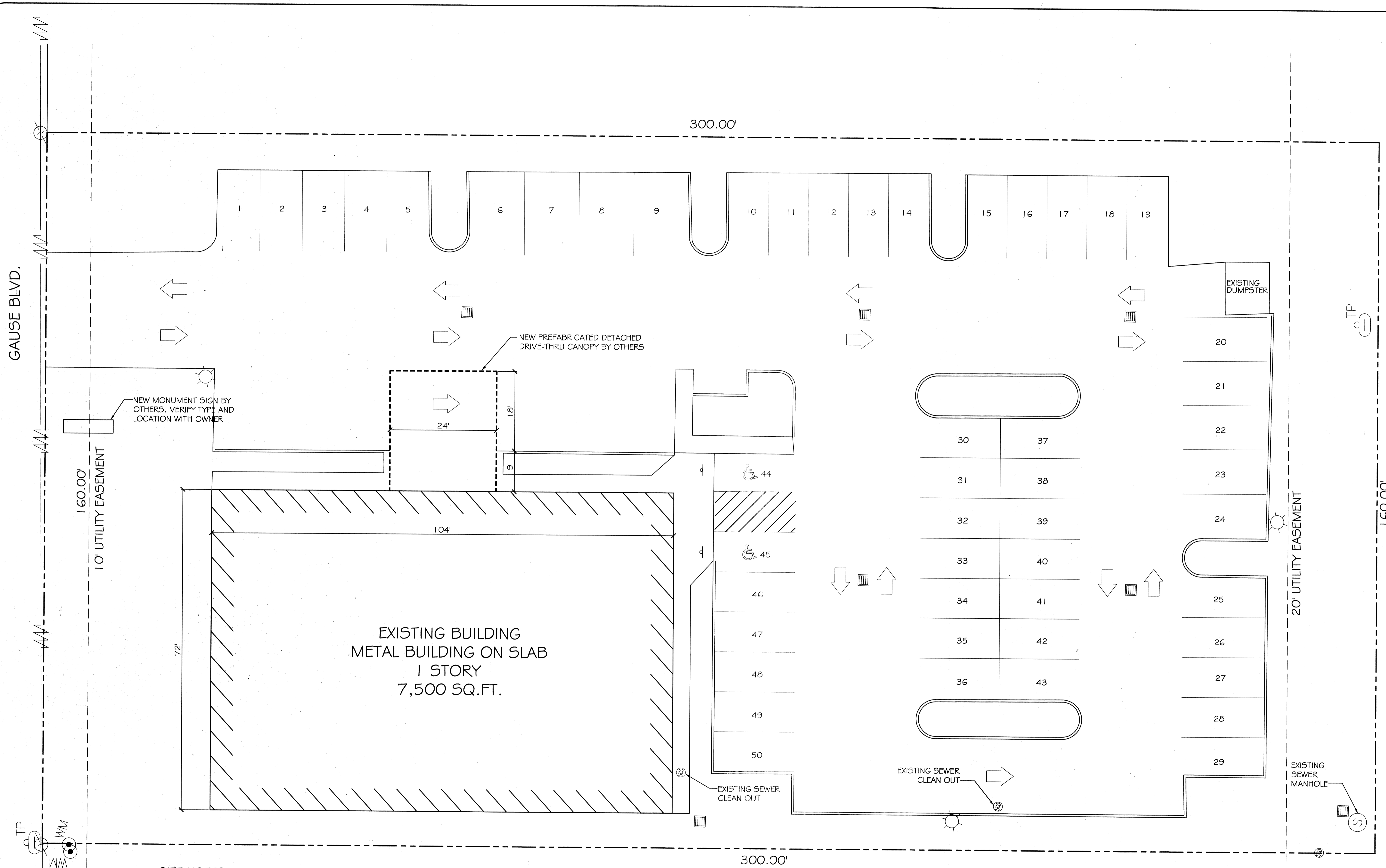
JOB#: 2132

DATE: 04-17-12

SHEET 2

C-1

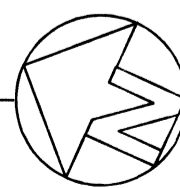
OF 12



SITE NOTES:

1. ALL EXISTING LANDSCAPING TO REMAIN.
2. REQUIRED PARKING:
1 PARKING SPACE PER 300 SQ.FT. OF BUILDING AREA
 $7,500 / 300 = 25$ SPACES REQUIRED
50 PARKING SPACES PROVIDED (2 HCP)
3. CONTRACTOR TO CLEAN AND INSPECT EXISTING EXTERIOR LIGHT POLES AND FIXTURES. REPLACE LAMPS AND PROVIDE OPERATIONAL LIGHTING SYSTEM. RE-USE EXISTING TIMER LOCATED IN ELEC. RM. 113

SITE PLAN
SCALE: 1"=10'-0"



LEGEND

- — — — — - PROPERTY LINE
- - - - - - - - - - - UTILITY / EASEMENT LINE
- - EXISTING BUILDING OUTLINE
- ♿ - HANDICAP PARKING
- ⊙ - HANDICAP PARKING SIGN