

REQUIREMENTS:

STANDARDS:
 PRIOR TO GRADING, CONSTRUCTION OR OTHER LAND
 BARRIERS SHALL BE INSTALLED IN ACCORDANCE WITH THE
 BELOW. BARRIERS SHALL INCLUDE, BUT NOT BE LIMITED TO, TEMPORARY
 CONSTRUCTED FROM ANY HIGHLY VISIBLE
 PROTECT THE ROOTS, TRUNK AND CROWN OF THE TREES,
 SAFETY FENCING AND WIRE FENCING.

AREA ALONG THE STREET (OR STREETS) OR ROAD (OR ROADS) ALONG WHICH A
 ATED FOR THE PRESERVATION OF TREES AND FOR LANDSCAPING. IF A PROPERTY
 THE STREET PLANTING AREA SHALL BE 30 FEET WIDE. THE FOLLOWING MINIMUM

THE STREET PLANTING AREA: 1 CLASS A TREE FOR EVERY 25' OF STREET
 EVERY 25' OF STREET FRONTAGE, 1 SHRUB FOR EVERY 10 FEET OF STREET

AREA: (370 FEET OF ROAD FRONTAGE)

1.8 (USE 1.5 CLASS A TREES)
 4.8 (USE 1.5 CLASS B TREES)

AREA REQUIREMENTS:
 SHALL BE A MINIMUM OF TEN FEET. TREES REQUIRED IF UNENCUMBERED BY UTILITY
 FOR EACH 30 LINEAR FEET OF THE BUFFER PLANTING AREA, AND CLASS B
 FEET OF THE BUFFER PLANTING AREA.

1.8 (USE 1.5 CLASS A TREES)

4.8 (USE 1.5 CLASS B TREES)

1.8 (USE 1.5 CLASS A TREES)

4.8 (USE 1.5 CLASS B TREES)

1.8 (USE 1.5 CLASS A TREES)

4.8 (USE 1.5 CLASS B TREES)

1.8 (USE 1.5 CLASS A TREES)

4.8 (USE 1.5 CLASS B TREES)

BE LOCATED ALONG THE FULL LENGTH OF THE BUILDING EXTERIOR WALL(S)
 EA(S). THIS AREA SHALL BE NO LESS THAN FOUR (4) FEET IN WIDTH.

PLANTING:
 STREET PLANTING AREA. SHRUBS SHALL BE LOCATED WITHIN THE STREET PLANTING
 (LINEAR) OR CLUSTERS TO ACHIEVE SCREENING. SHRUBS SHALL BE PLANTED 2
 THAT IF SHRUBS ARE PLANTED IN CLUSTERS, THE CLUSTERS SHALL BE 4 FEET
 ALL BE PLANTED UNLESS IT WILL REACH THREE (3) FEET IN HEIGHT WITHIN TWO (2)
 AFTER, SHRUBS SHALL BE MAINTAINED AT THREE (3) FEET IN HEIGHT OR HIGHER.

LANDSCAPE REQUIREMENTS:
 NO MORE THAN TWELVE (12) PARKING SPACES SHALL BE PERMITTED IN A
 INTERRUPTED OR TERMINATED BY A LANDSCAPED ISLAND OR MEDIAN OF NOT
 (EXCLUSIVE OF CURBS) AND NOT LESS THAN THE LENGTH OF THE PARKING SPACE.
 ROWS. EVERY PARKING ROW SHALL TERMINATE IN A LANDSCAPED ISLAND OF NOT
 INCLUDING THE CURBS) AND NOT LESS THAN THE LENGTH OF THE PARKING
 ISLAND SHALL NOT BE REQUIRED AT THE END OF A PARKING ROW WHERE
 IS A STREET PLANTING AREA OR BUFFER PLANTING AREA. REQUIRED PLANTS.
 CONTAIN A MINIMUM OF ONE (1) CLASS A TREE. ONE (1) CLASS A TREE FOR
 PLANTED IN THE REQUIRED MEDIAN BETWEEN ROWS. THE SURFACE OF THE
 S SHALL BE PLANTED IN A LIVING VEGETATIVE GROUND COVER.

LANDSCAPE LEGEND

PORTING WOODY PLANT OF A SPECIES WHICH NORMALLY GROWS TO AN OVERALL
 OF FIFTY (50) FEET, USUALLY WITH ONE MAIN STEM OR TRUNK ALTHOUGH SOME
 MULTIPLE TRUNKS, AND WITH MANY BRANCHES.

THE TIME OF PLANTING, SHALL HAVE A MINIMUM CALIPER OF AT LEAST TWO AND
 MEASURED SIX (6) INCHES ABOVE THE ROOT BALL, AND A MINIMUM HEIGHT OF
 NATIONAL NURSERY ASSOCIATION STANDARDS.

PORTING WOODY PLANT OF A SPECIES WHICH NORMALLY GROWS TO AN OVERALL
 OF TWENTY-FIVE (25) FEET, WITH ONE OR MORE MAIN STEM(S) OR TRUNK(S) AND

D ALL TREES, OTHER THAN CLASS "A" TREES, AT THE TIME OF PLANTING, SHALL
 ER OF AT LEAST ONE AND ONE-HALF (1 1/2) INCHES MEASURED (6") SIX INCHES
 AND A MINIMUM HEIGHT OF 8-10 FEET AS PER THE NATIONAL NURSERY
 STANDARDS.

LOW-GROWING BUSHY PLANT, USUALLY WITH WOODY STEMS. FOR THE PURPOSES
 GROUND COVER, TREES AND ANNUALS ARE NOT CONSIDERED SHRUBS.

THE TIME OF PLANTING, SHALL HAVE A MINIMUM HEIGHT OF TWO (2) FEET.

GROUND COVER

PARKING REQUIREMENTS

18,200 s.f. TOTAL BLDG. AREA, 534 OCCUPANTS
 REQUIRES: 1 SPACE / 4 OCCUPANTS
 TOTAL PARKING REQUIRED = 133.5 (6 HCP)
 TOTAL PARKING PROVIDED = 140 SPACES (6 HCP)

SITE LIGHTING

EXTERIOR LIGHTING SHALL BE SHADED OR INWARDLY
 DIRECTED IN SUCH A MANNER SO THAT NO DIRECT
 LIGHTING OR GLARE BE CAST BEYOND THE PROPERTY
 LINE. THE INTENSITY OF SUCH LIGHTING SHALL NOT
 EXCEED ONE FOOT CANDLE AS MEASURED AT THE
 ADJUTING PROPERTY LINE. (N/A)

SITE PLAN NOTES

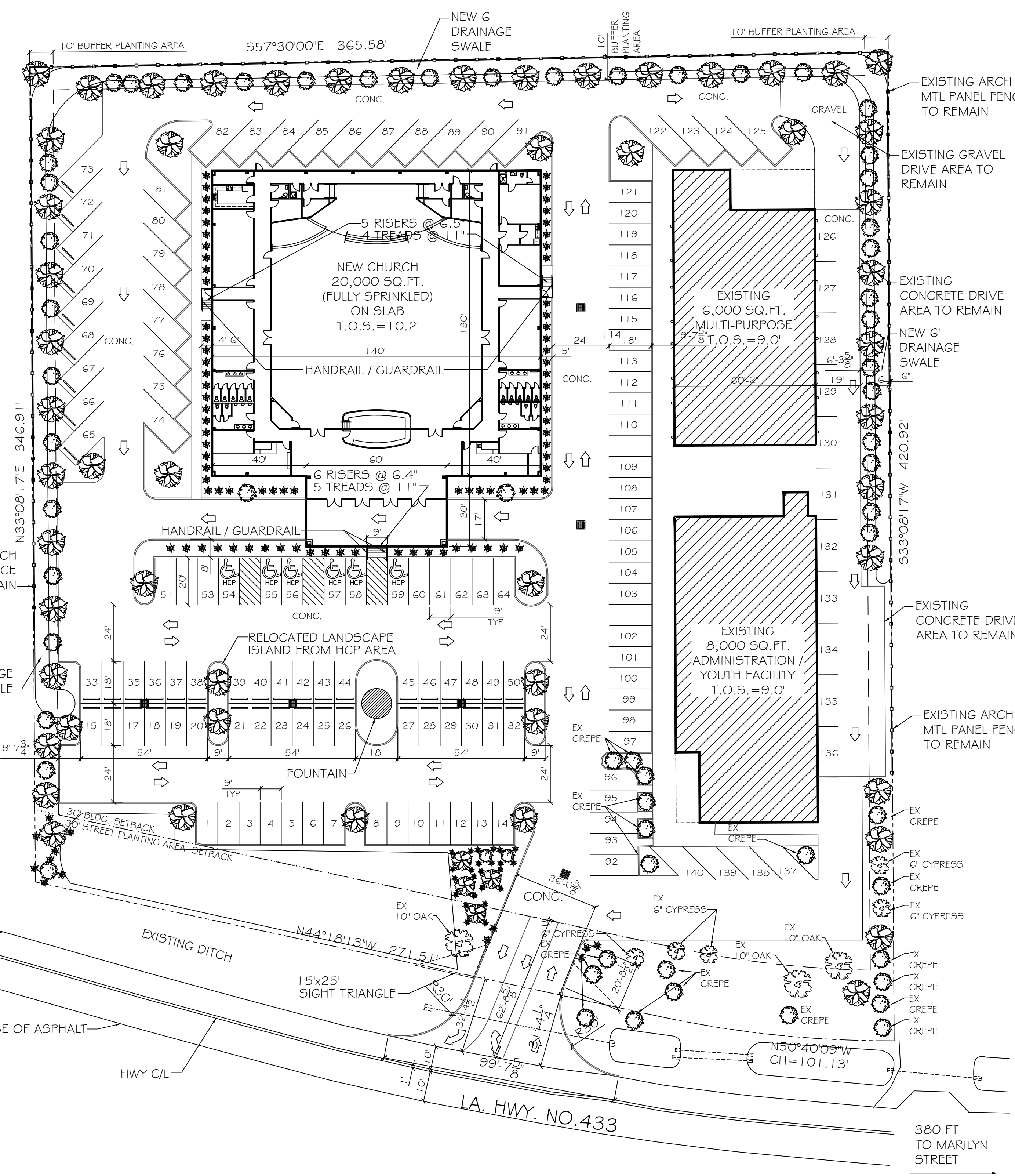
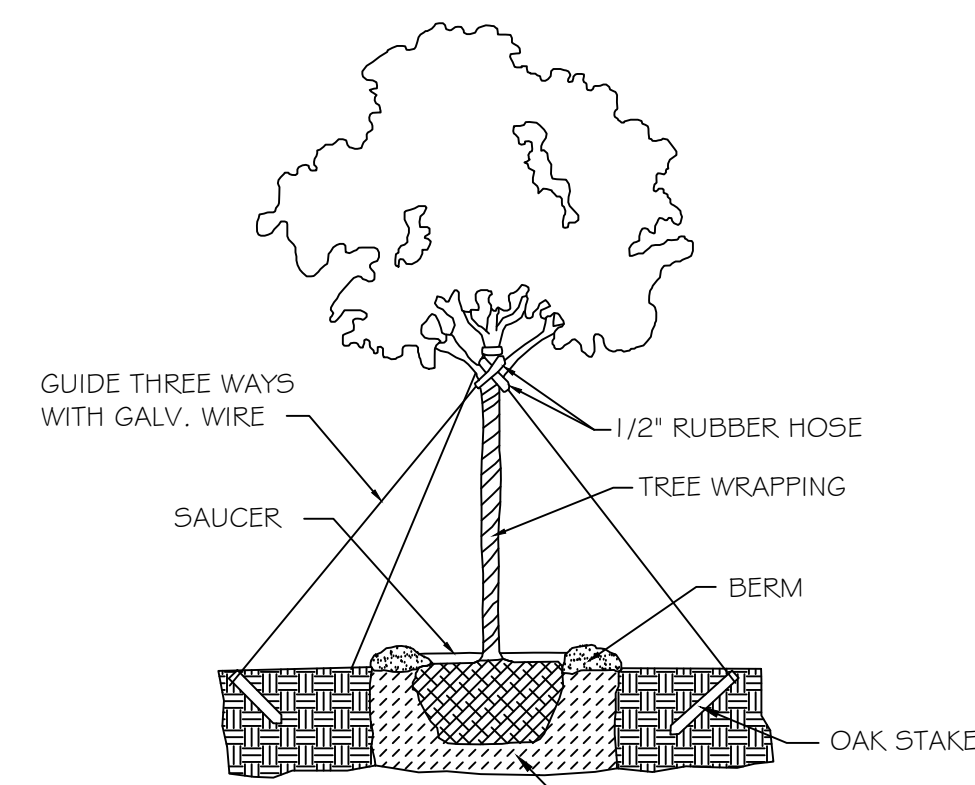
1. ROOFING MATERIAL: METAL SSR
2. SIDING MATERIAL: STUCCO FRONT
 METAL SIDING ON SIDES AND REAR
3. UTILITIES: ALL UTILITIES SHALL BE PLACED
 UNDERGROUND.

EXISTING TREE CREDITS:

(MARKED WITH "EX" ON PLAN)
 20 CREPE MYRTLE = 20 CLASS B TREES
 5 CYPRESS TREE (6" CAL) = 5 CLASS A TREES
 3 OAK TREE (10" CALIPER) = 6 CLASS A TREES

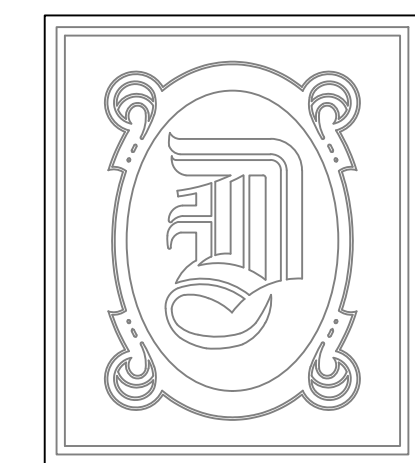
TYPICAL TREE PLANTING DETAIL

N. T. S.



SITE LEGEND

- — — — — PROPERTY LINE
- - - - - SETBACK LINE
- LANDSCAPE BUFFER
- 6' OPAQUE BUFFER FENCE
- ♿ HANDICAP PARKING
- ♿ HANDICAP PARKING SIGN
- ➔ TRAFFIC ARROW



DAMMON ENGINEERING, INC.

CHIEF ENGINEER
 EMMETT
 DAMMON, P.E.

CHIEF ARCHITECT
 ROBERT
 WILTSE

554 OLD SPANISH TRAIL
 SLIDELL, LA. 70458
 OFFICE: 985-649-5832
 FAX: 985-641-5950

WEBSITE:
 WWW.DAMMONENGINEERING.COM

EMAIL:
 DAMMONENG@BELLSOUTH.NET

- ARCHITECTURE
- ENGINEERING
- STUDIES
- PLANNING
- INVESTIGATION
- EXPERT WITNESS

LIVING THE WORD INTERNATIONAL

2528
 OLD SPANISH TRAIL
 SLIDELL, LA
 70461

SITE PLAN

REV:07-25-12

SCALE: AS NOTED

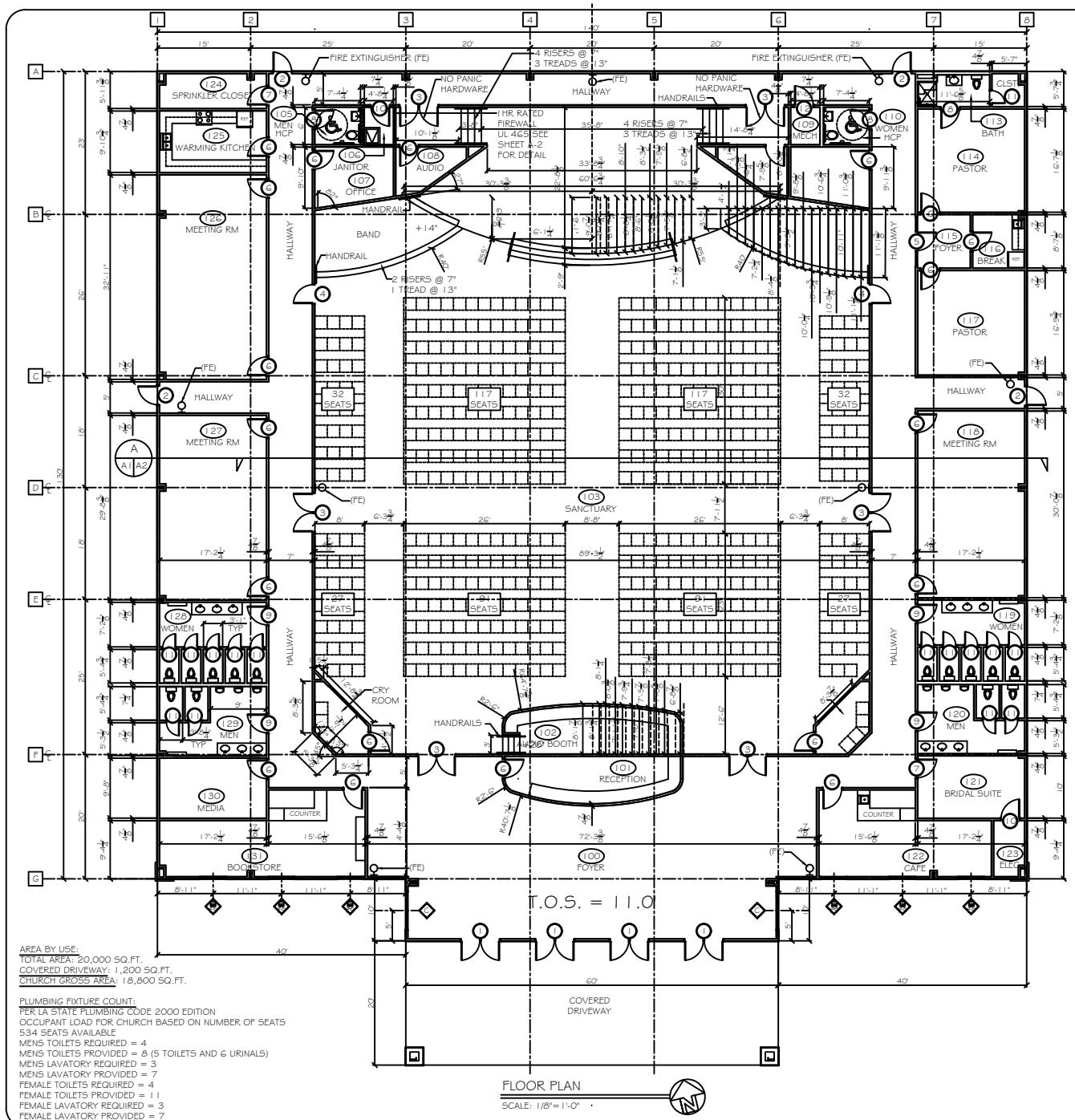
JOB#: 2128

DATE: 01-27-12

SHEET 4

C-3

OF 21



AREA BY USE:
 TOTAL AREA: 20,000 SQ. FT.
 COVERED DRIVEWAY: 1,200 SQ. FT.
 CHURCH GROSS AREA: 18,800 SQ. FT.

PLUMBING FIXTURE COUNT:
 PER I.A. STATE PLUMBING CODE 2000 EDITION
 OCCUPANT LOAD FOR CHURCH BASED ON NUMBER OF SEATS
 534 SEATS AVAILABLE
 MENS TOILETS REQUIRED = 4
 MENS TOILETS PROVIDED = 5 (5 TOILETS AND 6 URINALS)
 MENS LAVATORY REQUIRED = 3
 MENS LAVATORY PROVIDED = 7
 FEMALE TOILETS REQUIRED = 4
 FEMALE TOILETS PROVIDED = 11
 FEMALE LAVATORY REQUIRED = 3
 FEMALE LAVATORY PROVIDED = 7

FLOOR PLAN
 SCALE: 1/8" = 1'-0"

DOOR # HARDWARE SCHEDULE						
MARK	SIZE	DOOR TYPE	FRAME	HWDR. NO.	STC	REMARKS
EXTERIOR DOORS						
1	PR. 3/0x7/0	STORE FRONT	TO MATCH DOOR	1	NA	
2	PR. 3/0x7/0	FLUSH GALV. HOL. MET. STEEL INSUL.		1	NA	GALVANIZING TO BE G90
INTERIOR DOORS						
3	PR. 3/0x7/0	FLUSH SOLID CORE WD.	PTD. HOL. MET.	3	NA	PROVIDE 4x36 VISION LITE
4	3/0x7/0	FLUSH GALV. HOL. MET. STEEL INSUL.	PTD. HOL. MET.	3	NA	
5	3/0x7/0	STORE FRONT	TO MATCH DOOR	4	NA	W/ SIDELITES, MULLION BAR TRANSOM LITE ABOVE
6	3/0x7/0	FLUSH SOLID CORE WD.	PTD. HOL. MET.	4	NA	PROVIDE 4x36 VISION LITE
7	3/0x7/0	FLUSH SOLID CORE WD.	PTD. HOL. MET.	4	NA	
8	3/0x7/0	FLUSH SOLID CORE WD.	PTD. HOL. MET.	5	NA	
9	3/0x7/0	FLUSH SOLID CORE WD.	PTD. HOL. MET.	3	NA	
10	3/0x7/0	FLUSH SOLID CORE WD.	PTD. HOL. MET.	2	NA	1 HR. FIRE RATED
11	2/0x7/0	FLUSH SOLID CORE WD.	PTD. HOL. MET.	3	NA	
12	3/0x7/0	FLUSH SOLID CORE WD.	PTD. HOL. MET.	2	NA	

1. AUTO CLOSER, 20 RESISTANT METAL THRESHOLD, WEATHERSTRIP, DOOR STOP, EXTERIOR CYLINDER LOCK, (OFF-CENTRAL) BALL BEARING US320 HINGES.
 2. AUTO CLOSER, DOOR STOP, CYLINDER LOCK, (STOREROOM LOCK), BALL BEARING US320 HINGES.
 3. PASSAGE LOCK, DOOR STOP, US320 HINGES.
 4. KNOB HANDLE, OFF-CENTRALIZED, DOOR STOP, US320 HINGES.
 5. AUTO CLOSER, DOOR STOP, PRIVACY LOCK, BALL BEARING US320 HINGES.

WINDOW SCHEDULE					
MARK	SIZE	WINDOW TYPE	FRAME	GLASS	REMARKS
1	OVERALL UNIT SIZE = 4'0" W x 14'6" H	ALUMINUM STOREFRONT	ALUMINUM 2" x 4"	LOW E	SEE EX. ELEVATIONS FOR ARCH. TOP
2	OVERALL UNIT SIZE = 4'0" W x 16'6" H	ALUMINUM STOREFRONT	ALUMINUM 2" x 4"	LOW E	SEE EX. ELEVATIONS FOR ARCH. TOP
3	OVERALL UNIT SIZE = 6'0" W x 10'0" H	ALUMINUM STOREFRONT	ALUMINUM 2" x 4"	LOW E	SEE EX. ELEVATIONS FOR ARCH. TOP

WINDOW SCHEDULE NOTES:
 1. GLAZING TO BE DEL. GLAZED LAMINATED LOW E.
 2. EXTERIOR WINDOW SYSTEM SHALL BE CAPABLE OF RESISTING 130 MPH WIND LOAD.

- GENERAL NOTES**
- INSULATION AND INSULATION ASSEMBLIES SHALL MEET THE REQUIREMENTS OF SECTION 719.
 - CONCEALED INSULATION SHALL HAVE A FLAME SPREAD OF 0-25 AND SMOKE DEVELOPED INDEX OF 0-450. EXCEPT THAT IN COMBUSTIBLE (WOOD FRAME) CONSTRUCTION.
 - CONTRACTOR TO VERIFY ALL SITE CONDITIONS, BUILDING LOCATIONS, AND DIMENSIONS PRIOR TO CONSTRUCTION.
 - MATERIALS SHALL BE NEW AND U.L. LISTED.
 - NO WORK SHALL BE CONCEALED UNTIL APPROVED BY LOCAL INSPECTORS.
 - CONSTRUCTION SHALL COMPLY WITH ALL PARISH, STATE, AND LOCAL CODES.
 - CONTRACTOR TO GUARANTEE WORK FOR ONE YEAR.
 - CONTRACTOR SHALL FURNISH WATER AND POWER FROM EXISTING SOURCES.
 - EXTERIOR CALKING SHALL BE THICK CAULK.
 - PAINT GRADE TO SHALL BE SHERWIN WILLIAMS OR EQUIVALENT. ALL WORK TO RECEIVE 3 COATS. COLOR SELECTION BY OWNER.
 - PROVIDE CLEANUP ON A REGULAR BASIS. NO TRASH STORED IN BUILDING.
 - ALL BATT INSULATION SHALL HAVE A CLASS "A" (0-25) FLAME SPREAD IN COMPLIANCE WITH APPLICABLE CODE.
 - USE C STUDS, OR 4" STAGGERED STUDS AT ALL PLUMBING WALLS.
 - PROVIDE GALVANIZED METAL PAN WITH DRAIN AT WATER HEATER LOCATION.
 - ALL CORNERS SHALL BE PROPERLY BRACED FOR WIND LOADS. A 48" SHEATHING SHALL BE PROVIDED EVERY 20 FEET OF WALL LENGTH.
 - INTERIOR LOCKS ON DOORS IN MEANS OF EGRESS SHALL NOT REQUIRE THE USE OF A KEY, SPECIAL KNOWLEDGE, OR SPECIAL DEVICE TO OPEN IN THE DIRECTION OF EGRESS. ALL DOORS SHALL HAVE LEVER TYPE HANDLES.
 - INTERIOR WALLS AND CEILINGS SHALL HAVE A FLAME SPREAD OF 0-25 AND A SMOKE DEVELOPMENT RATING OF 0-450.
 - ALL WORK SHALL COMPLY WITH THE LATEST EDITION OF ALL LOCAL, STATE, AND NATIONAL CODES COVERING THE TYPE OF WORK BEING PERFORMED.
 - PROVIDE PORTABLE FIRE EXTINGUISHERS IN ACCORDANCE WITH NFPA 101. SEE APPENDIX "E" OF NFPA 101 FOR DISTRIBUTION OF EXTINGUISHERS.
 - ALL FIRE WALLS SHALL EXTEND TIGHT TO ROOF DECK AND BE SEALED WITH AN APPROVED FIRE CAULK.
 - ALL ELECTRICAL, MECHANICAL, AND PLUMBING MATERIALS PENETRATING FIRE WALLS SHALL BE FIRE CALKED. (PENETRATIONS THROUGH RATED CONSTRUCTION SHALL BE SEALED WITH A MATERIAL CAPABLE OF PREVENTING THE PASSAGE OF FLAMES AND HOT GASES WHEN TESTED IN ACCORDANCE WITH ASTM E814.)
 - SERVICE COUNTER SHALL HAVE A HCP ACCESSIBLE WRITING SURFACE, MAX. 36" FROM F.F. (ADAAG MANUAL 1998, PG. 133).

DAMMON ENGINEERING, INC.
 CHIEF ENGINEER
 EMMETT DAMMON, P.E.
 CHIEF ARCHITECT
 ROBERT WILTSE

554 OLD SPANISH TRAIL
 SLIDELL, LA. 70458
 OFFICE: 985-649-5932
 FAX: 985-641-5950

WEBSITE:
 WWW.DAMMONENGINEERING.COM
 EMAIL:
 DAMMONENG@Bellsouth.net

ARCHITECTURE
 ENGINEERING
 STUDIES
 PLANNING
 INVESTIGATION
 EXPERT WITNESS

LIVING THE WORD INTERNATIONAL

2528
 OLD SPANISH TRAIL
 SLIDELL, LA
 70461

FLOOR PLAN

REV:

SCALE: AS NOTED

JOB#: 2128

DATE: 01-27-12

SHEET 9

A-1

OF 21