



**Design No. U055  
BXUV.U055  
Fire Resistance Ratings - ANSI/UL 263**

[Page Bottom](#)

---

**Design/System/Construction/Assembly Usage Disclaimer**

- Authorities Having Jurisdiction should be consulted in all cases as to the particular requirements covering the installation and use of UL Certified products, equipment, system, devices, and materials.
  - Authorities Having Jurisdiction should be consulted before construction.
  - Fire resistance assemblies and products are developed by the design submitter and have been investigated by UL for compliance with applicable requirements. The published information cannot always address every construction nuance encountered in the field.
  - When field issues arise, it is recommended the first contact for assistance be the technical service staff provided by the product manufacturer noted for the design. Users of fire resistance assemblies are advised to consult the general Guide Information for each product category and each group of assemblies. The Guide Information includes specifics concerning alternate materials and alternate methods of construction.
  - Only products which bear UL's Mark are considered Certified.
- 

**BXUV - Fire Resistance Ratings - ANSI/UL 263**

**BXUV7 - Fire Resistance Ratings - CAN/ULC-S101 Certified for Canada**

[See General Information for Fire-resistance Ratings - ANSI/UL 263](#)

[See General Information for Fire Resistance Ratings - CAN/ULC-S101 Certified for Canada](#)

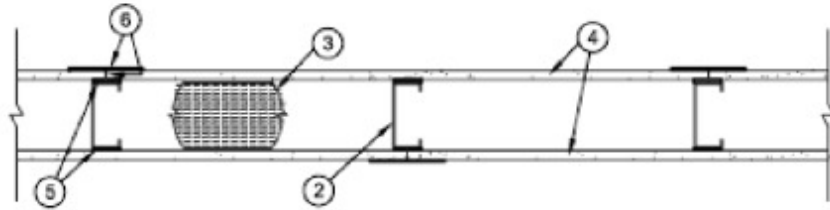
**Design No. U055**

October 27, 2009

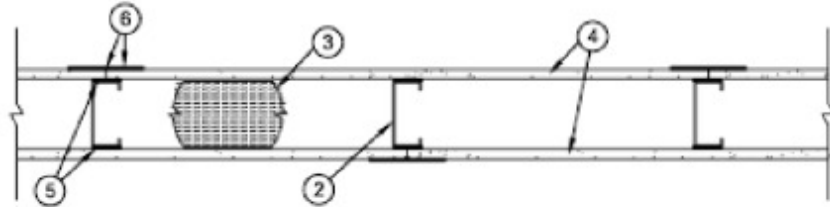
**Nonbearing Wall Ratings — 1, 1-1/2, 2 or 3 Hr (See Item 4)**

**\* Indicates such products shall bear the UL or cUL Certification Mark for jurisdictions employing the UL or cUL Certification (such as Canada), respectively.**

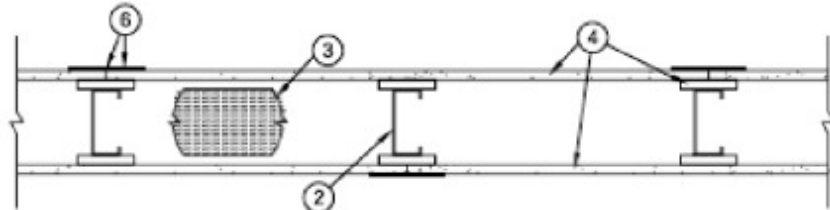
### 1 OR 1-1/2 HR CONFIGURATION



### 2 HR CONFIGURATION



### 3 HR CONFIGURATION



1. **Floor and Ceiling Runners** — (Not shown) — Channel shaped, fabricated from min 22 MSG corrosion-protected steel, min width to accommodate stud size, with min 1-1/4 in. long legs, attached to floor and ceiling with fasteners 24 in. OC max.

2. **Steel Studs** — Channel shaped, fabricated from min 22 MSG corrosion-protected steel, min width as indicated under Item 4, min 1-1/2 in. flanges, spaced a max of 24 in. OC. Studs to be cut 3/4 in. less than assembly height.

3. **Batts and Blankets\*** — Mineral wool batts, friction fitted between studs and runners. Min nom thickness and min density as indicated under Item 4. See **Batts and Blankets (BKNV or BZJZ)** Categories for names of Classified companies.

4. **Building Units\*** — 4 ft. wide Type Dragonboard magnesium oxide panels.

**1 Hr Rating** — Outer surface of steel studs (Item 2) covered with gasket tape (Item 5) prior to panel installation. Nominal 10mm thick panels installed vertically with vertical joints centered over studs and staggered from vertical joints on opposite side of studs. Horizontal joints staggered from horizontal joints on opposite side of studs and backed by a min 20 MSG, nom 3-1/2 in. wide steel nailer plate (not shown) centered behind the horizontal joint. Outer surface of steel nailer plate covered with gasket tape (Item 5). Plate secured to steel studs prior to panel placement. Max 1/16 in. separation at all panel joints. Joint separation completely filled with fill material (Item 6). Panels attached to studs and plates with 1-1/4 in. long bugle head screws spaced 6 in. OC max at the perimeter and in the field.

**1-1/2 Hr Rating** — Outer surface of steel studs (Item 2) covered with gasket tape (Item 5) prior to panel installation. Nominal 14mm thick panels installed vertically with vertical joints centered over studs and staggered from vertical joints on opposite side of studs. Horizontal joints staggered from horizontal joints on opposite side of studs and backed by a min 20 MSG, nom 3-1/2 in. wide steel nailer plate (not shown) centered behind the horizontal joint. Outer surface of steel nailer plate covered with gasket tape (Item 5). Plate secured to steel studs prior to panel placement. Max 1/16 in. separation at all panel joints. Joint separation completely filled with fill material (Item 6). Panels attached to studs and plates with 1-1/4 in. long bugle head screws spaced 6 in. OC max at the perimeter and in the field.

**2 Hr Rating** — Outer surface of steel studs (Item 2) covered with gasket tape (Item 5) prior to panel installation. Nominal 14mm thick panels installed vertically with vertical joints centered over studs and staggered from vertical joints on opposite side of studs. Horizontal joints staggered from horizontal joints on opposite side of studs and backed by a min 20 MSG, nom 4 in. wide steel nailer plate (not shown) centered behind the horizontal joint. Outer surface of steel nailer plate covered with gasket tape (Item 5). Plate secured to steel studs prior to panel placement. Panel joints filled with a 3/16 in. bead of fill material (Item 6) and butted tight. Panels attached to studs and plates with 2 in. long bugle head screws spaced 6 in. OC max at the perimeter and in the field.

**3 Hr Rating** — A 3 in. wide strip of nominal 14mm thick Type Dragonboard magnesium oxide panel is

secured to the outer surface of steel studs (Item 2) prior to panel placement. Nominal 14mm thick panels installed vertically with vertical joints centered over studs and staggered from vertical joints on opposite side of studs. Horizontal joints staggered from horizontal joints on opposite side of studs and backed by a min 18 MSG, nom 4 in. wide steel nailer plate (not shown) centered behind the horizontal joint. Plate secured to steel studs prior to panel placement. Panel joints filled with a 3/16 in. bead of fill material (Item 6) and butted tight. Panels attached to studs and plates with 2 in. long bugle head screws spaced 6 in. OC max at the perimeter and in the field.

The min stud depth and thickness of insulation for the 1 hr, 1-1/2 hr, 2 hr and 3 hr ratings are as follows:

Rating, Hr	Min Stud Depth, in. (Item 2)	Min Thickness of Insulation (Item 3)	Min Density of Insulation (Item 3)
1 or 1-1/2	3-5/8	3 in.	5.7 pcf
2	3-5/8	4 in.	6.1 pcf
3	4	4 in.	6.1 pcf

**DRAGONBOARD USA L L C** — Nom 10mm or 14mm thick Type Dragonboard.

5. **Gasket Tape** — Foam isolator tape with foiled backing, 1-1/4 in. wide by 1/8 in. thick, with pressure-sensitive adhesive on one side.

6. **Fill, Void or Cavity Materials\*** — All vertical and horizontal joints of building unit panels covered with a 4 in. wide, min 1/8 in. thick layer of fill material. Screw heads covered with fill material.

**PASSIVE FIRE PROTECTION PARTNERS** — Type 4800DW Sealant.

**\* Indicates such products shall bear the UL or cUL Certification Mark for jurisdictions employing the UL or cUL Certification (such as Canada), respectively.**

Last Updated on 2009-10-27

[Questions?](#)

[Print this page](#)

[Terms of Use](#)

[Page Top](#)

© 2015 UL LLC

When the UL Leaf Mark is on the product, or when the word "Environment" is included in the UL Mark, please search the [UL Environment database](#) for additional information regarding this product's certification.

The appearance of a company's name or product in this database does not in itself assure that products so identified have been manufactured under UL's Follow-Up Service. Only those products bearing the UL Mark should be considered to be Certified and covered under UL's Follow-Up Service. Always look for the Mark on the product.

UL permits the reproduction of the material contained in the Online Certification Directory subject to the following conditions: 1. The Guide Information, Assemblies, Constructions, Designs, Systems, and/or Certifications (files) must be presented in their entirety and in a non-misleading manner, without any manipulation of the data (or drawings). 2. The statement "Reprinted from the Online Certifications Directory with permission from UL" must appear adjacent to the extracted material. In addition, the reprinted material must include a copyright notice in the following format: "© 2015 UL LLC".