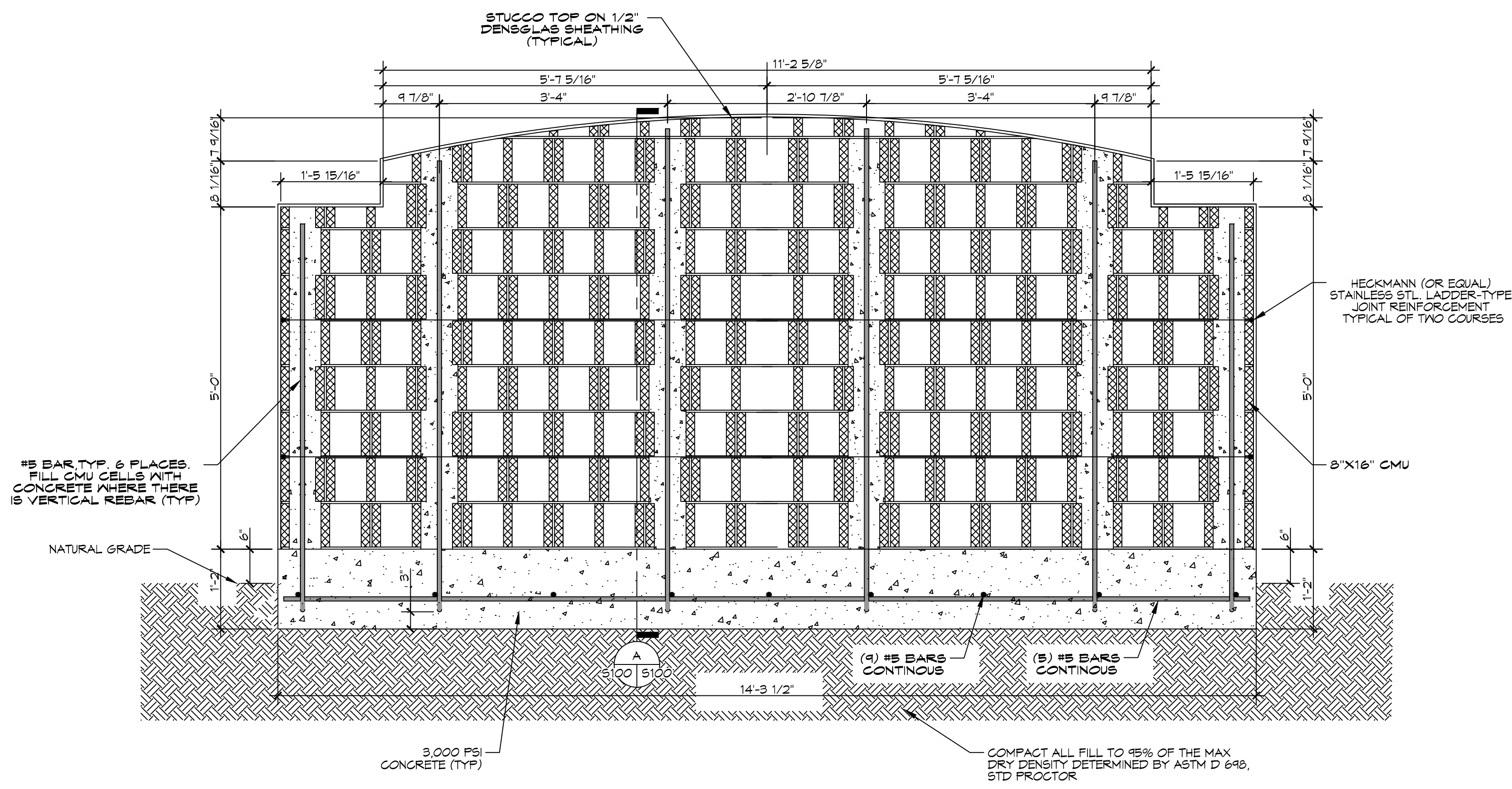
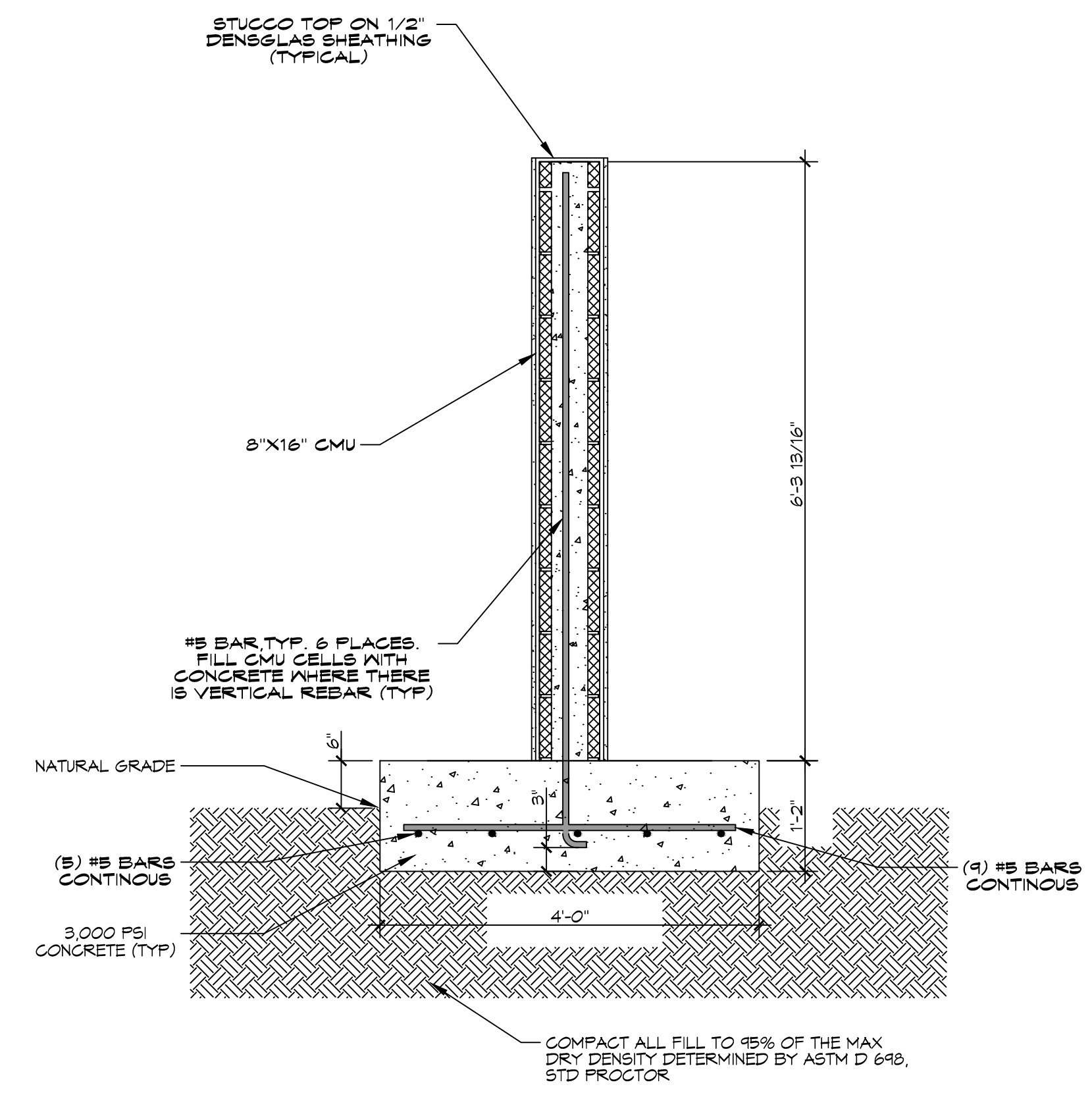


1 MONUMENT SIGN
SCALE: 3/4" = 1'-0"



2 CMU ELEVATION
SCALE: 3/4" = 1'-0"



A SECTION
SCALE: 3/4" = 1'-0"

GENERAL NOTES

1. THE CONCRETE MIX SHALL HAVE A MINIMUM COMPRESSIVE STRENGTH OF 3000 PSI AT 28 DAYS. CONCRETE MIX SHALL BE IN ACCORDANCE WITH ACI-318.
2. ALL CONVENTIONAL REINFORCING SHALL MEET ASTM-A615 (GRADE 60).
3. ALL REINFORCING STEEL AND MESH SHALL BE SECURELY SUPPORTED TO PREVENT BOTH VERTICAL AND HORIZONTAL MOVEMENT DURING CONCRETE PLACEMENT.
4. THE CONTRACTOR SHALL VERIFY ALL DROPS, OFFSETS, CMU LEDGES, DIMENSIONS, AND CONFIGURATIONS.
5. ALL RUNOFF WATER SHALL BE CARRIED AWAY FROM THE SLAB TO PREVENT SATURATION OF THE SUB-BASE.
6. ALL TREES WITHIN CLOSE PROXIMITY SHALL BE REMOVED TO PREVENT THE ROOTS FROM EXTENDING UNDER THE SLAB.
7. PROVIDE AND MAINTAIN IMMEDIATE SITE DRAINAGE BEFORE, DURING, AND AFTER CONSTRUCTION. PROVIDE GRADING, SWELLS, AND SUMP PUMPS AS MAY BE REQUIRED TO IMMEDIATELY DRAIN ALL RAINWATER FROM THE CONSTRUCTION AREA. FOOTING EXCAVATIONS SHOULD BE OBSERVED AND CONCRETE TO BE PLACED AS QUICKLY AS POSSIBLE TO AVOID EXPOSURE OF THE FOOTING BOTTOMS TO WETTING AND DRYING. SURFACE RUNOFF WATER SHOULD BE DRAINED AWAY FROM THE EXCAVATIONS AND NOT BE ALLOWED TO POND PRIOR TO OR AFTER CONCRETE PLACEMENT. IF IT IS REQUIRED THAT A FOOTING EXCAVATION BE LEFT OPEN FOR MORE THAN ONE DAY, IT SHOULD BE PROTECTED TO REDUCE EVAPORATION OR ENTRY OF MOISTURE.

SITE PREP NOTES

1. REMOVE EXISTING SURFACE SOILS TO A DEPTH OF 24 INCHES AND 24 INCHES BEYOND FOOT PRINT OF MONUMENT SIGN. REPLACE WITH STRUCTURAL FILL.
2. STRUCTURAL (A4 SELECT) FILL SHALL BE INSTALLED IN 6" LIFTS. IT SHALL BE COMPACTED TO 95% OF MAXIMUM DRY DENSITY AS DETERMINED BY ASTM D-698 STANDARD PROCEDURE.
3. PROVIDE AND MAINTAIN IMMEDIATE SITE DRAINAGE BEFORE, DURING AND AFTER CONSTRUCTION. PROVIDE GRADING, SWALES AND SUMP PUMPS AS MAY BE REQUIRED TO IMMEDIATELY DRAIN ALL RAIN WATER FROM THE CONSTRUCTION AREA. GOOD SURFACE DRAINAGE WITH POSITIVE COLLECTION AND RUNOFF AND SLOPES AWAY FROM THE SIGN SHOULD BE ASSURED. SLAB MUST HAVE DRY COMPACTED SOIL AT TIME OF POURING CONCRETE.

DAMMON ENGINEERING, INC.
LOUISIANA & MISSISSIPPI

Chief Engineer: Brian Mistich, PE
554 Old Spanish Trail
Stidell, LA 70458
www.dammonengineering.com
info@dammonengineering.com
PH: 985.640.5632

#	DESCRIPTION	DATE

SEAL:

MONUMENT SIGN REVISION

65060 HWY 484, LACOMBE, LA
JOB NO: 2866 DATE: 01-11-2018
DRAWN BY: CKD CHECKED BY: BAK

SHEET TITLE:
MONUMENT SIGN FOUNDATION PLAN

DRAWING NUMBER:
S100

SHEET No: 1 of 1