

LIFE-SAFETY INFORMATION

APPLICABLE CODES
 NFPA 101 LIFE-SAFETY CODE 2015
 OCCUPANCY TYPE(S) AND CHAPTER(S)
 ASSEMBLY A-2 & A-3 (CHAPTER 12)

MIXED OCCUPANCY	(REFERENCE CHAPTER 6)
OCCUPANT LOAD FACTOR	(REFERENCE TABLE 7.3.1.2)
ASSEMBLY A-3 1 PERSON / 1 FT-6 IN OF BENCH	152 * 2 WHEEL CHAIR = 154 OCCUPANTS
ASSEMBLY A-2 100 SF PER PERSON	40 OCCUPANTS
	194 OCCUPANTS

CLASSIFICATION OF HAZARD OF CONTENTS
 (REFERENCE: OCCUPANCY CHAPTER AND 6.2.2; SPECIFY LOW, ORDINARY, OR HIGH)
 CONSTRUCTION TYPE= VB (REFERENCE: CHAPTER 8; TABLE A.8.2.1.2 AND COMMENTARY TABLE 8.1 IN HANDBOOK)
 MINIMUM EXIT SEPARATION DISTANCE FOR REMOTELY LOCATED EXITS
 (REFERENCE: SECTION 7.5; SPECIFY 1/2 OR 1/3 DIAGONAL DISTANCE OF AREA SERVED)
 1/2 DIAGONAL = 41'-8"

MAXIMUM DEAD-END CORRIDORS (REFERENCE: OCCUPANCY CHAPTER AND TABLE A.7.6)
 20 FEET

MAXIMUM COMMON PATH OF TRAVEL DISTANCE (REFERENCE: OCCUPANCY CHAPTER AND TABLE A.7.6)
 20 FEET/75 FEET

MAXIMUM TRAVEL DISTANCE TO EXITS (REFERENCE: OCCUPANCY CHAPTER AND TABLE A.7.6)
 200 FEET

*MAIN ENTRANCE MUST BE SIGNED TO ACCOMMODATE 1/2 OCCUPANT LOAD OF BUILDING

EXTINGUISHMENT REQUIREMENTS NOT SPRINKLERED (NOT REQUIRED)

DETECTION, ALARM, AND COMMUNICATION SYSTEMS NO

ALLOWABLE HEIGHT AND BUILDING AREA PER IBC EQUIVALENT CONSTRUCTION TYPE

BUILDING CODE INFORMATION

APPLICABLE CODES
 IBC 2015

ASSEMBLY GROUP A2 & A3 (IBC 2012 CHAPTER 9)

OCCUPANT LOAD CALCULATIONS	(TABLE 1004.1.2)
ASSEMBLY 3 (FIXED SEATING) = 228 FT-10IN (BENCH) + 2 WHEELCHAIR	152 * 2 = 154 OCCUPANTS
ASSEMBLY 2 = 3664 sq. ft.	100 SF PER PERSON
TOTAL OCCUPANTS	194 OCCUPANTS

CONSTRUCTION TYPE(S) VB (SECTION 602)

ALLOWABLE HEIGHT AND BUILDING AREA LIMITED BY TYPE OF CONSTRUCTION

MAXIMUM HEIGHT IN STORIES (SECTION 503 & 504, TABLE 504.4)	1
MAXIMUM AREA IN SQUARE FEET (SECTION 503, 506 & 507, TABLE 506.2) WITH AREA INCREASE, NS-A2 & NS-A3	10,500 SF
BUILDING AREA IN SQUARE FEET	7,840 SF

WIND SPEED DESIGN REQUIREMENTS

THIS BUILDING SHALL BE DESIGNED WITH IBC SEC 1609 AS A FULLY ENCLOSED BLDG USING THE FOLLOWING INFORMATION:
 WIND DESIGN DATA- DETERMINATION OF WIND LOADS SHALL BE IN ACCORDANCE WITH IBC SEC 1609.3 (A), (B), OR (C) DEPENDING ON THE RISK CATEGORY

ULTIMATE WIND SPEED = 142 MPH (IBC FIG 1609C)	NOMINAL WIND SPEED = V _{bsd} = 110 MPH
RISK FACTOR: CATEGORY II	SURFACE ROUGHNESS = B
TOPOGRAPHIC FACTOR = 1	EXPOSURE = B
INTERNAL PRESSURE COEFFICIENT (ASCE 7-10 TABLE 26.11-1):	± 0.18

LIVE LOADS (IBC SEC 1607)

ASSEMBLY FIXED SEATING (IBC TABLE 1607.1):	60 PSF
PLATFORMS (ASSEMBLY) (IBC TABLE 1607.1):	100 PSF
LOBBIES (IBC TABLE 1607.1):	100 PSF
CLASSROOMS (IBC TABLE 1607.1):	40 PSF UNIFORM, 1,000 LB CONCENTRATED
ROOF LIVE LOADS (IBC TABLE 1607.1):	20 PSF UNIFORM, 300 LB CONCENTRATED
SNOW LOADS (IBC TABLE 1608):	
GROUND SNOW LOAD (IBC FIG 1608.2):	5 PSF

FLOOD ZONE INFORMATION

BASED ON THE SURVEY OF THIS PROPERTY BY J.V. BURKES AND ASSOCIATES, INC. THIS PROPERTY IS NOT IN A SPECIAL FLOOD HAZARD AREA. F.I.R.M. COMMUNITY MAP NO 220203 0001 B; REVISED 5/4/08

FLOOD ZONE:	X	BASE FLOOD ELEVATION	N/A NGVD
-------------	---	----------------------	----------

ELEVATIONS REFER TO NGVD 1929 DATUM

PROJECT STATISTICS

BUILDING SQUARE FOOTAGE	TOTAL ENCLOSED SPACE	7840 SF
-------------------------	----------------------	---------

EXISTING INDUSTRIALIZED BUILDING FOR NEW CHURCH

PROJECT LOCATION: 64452 HIGHWAY 41 PEARL RIVER, LA 70452

OWNER: PASTOR SAM HUSSER

GRAPHIC SYMBOLS

CEILING HEIGHT	FINISHED CEILING DESIGNATION SYMBOL	DRAWING NO. 1 FLOOR PLAN	DRAWING TITLE
CEILING MATERIAL	AREA OF DETAIL TO BE ENLARGED	SCALE: SCALE	SCALE
SHEET NUMBER	DETAIL TAG	TRUE NORTH	DRAWING SCALE
DETAIL NUMBER	ELEVATION TAG	PLAN NORTH	DRAWING SUBTITLE
DETAIL NUMBER	SECTION TAG	DRAWING NO. 1 FLOOR PLAN	DRAWING TITLE
DETAIL NUMBER	SECTION TAG	SCALE: SCALE	SCALE
DETAIL NUMBER	SECTION TAG	DRAWING SCALE	DRAWING SCALE
DETAIL NUMBER	SECTION TAG	DRAWING SUBTITLE	DRAWING SUBTITLE
DETAIL NUMBER	SECTION TAG	ROOM NAME	ROOM TAG
DETAIL NUMBER	SECTION TAG	ROOM NUMBER	PARTITION TYPE TAG
DETAIL NUMBER	SECTION TAG	ROOM NUMBER	ELEVATION TAG
DETAIL NUMBER	SECTION TAG	WINDOW - LOUVER OPENING DESIGNATION, REFERENCE WINDOW SCHEDULE	WINDOW - LOUVER OPENING DESIGNATION, REFERENCE WINDOW SCHEDULE
DETAIL NUMBER	SECTION TAG	DOOR OPENING DESIGNATION, REFERENCE DOOR SCHEDULE	DOOR OPENING DESIGNATION, REFERENCE DOOR SCHEDULE
DETAIL NUMBER	SECTION TAG	KEY NOTE (SHEET SPECIFIC)	KEY NOTE (SHEET SPECIFIC)

RELOCATION OF INDUSTRIALIZED BUILDING FOR THE CROSSING CHURCH PEARL RIVER LOUISIANA

THESE ARE EXISTING INDUSTRIALIZED BUILDINGS THAT WERE ONCE FOR EDUCATIONAL PURPOSES AND NOW WILL BE FOR A CHURCH. ALL THE INTERIOR WALLS AND ASSOCIATED COMPONENTS WILL BE REMOVED FOR THE INSTALLATION OF NEW MATERIAL PER THE NEW LAYOUT. SEE MANUFACTURE DRAWINGS.

ALLOWABLE BLDG AREA INCREASE

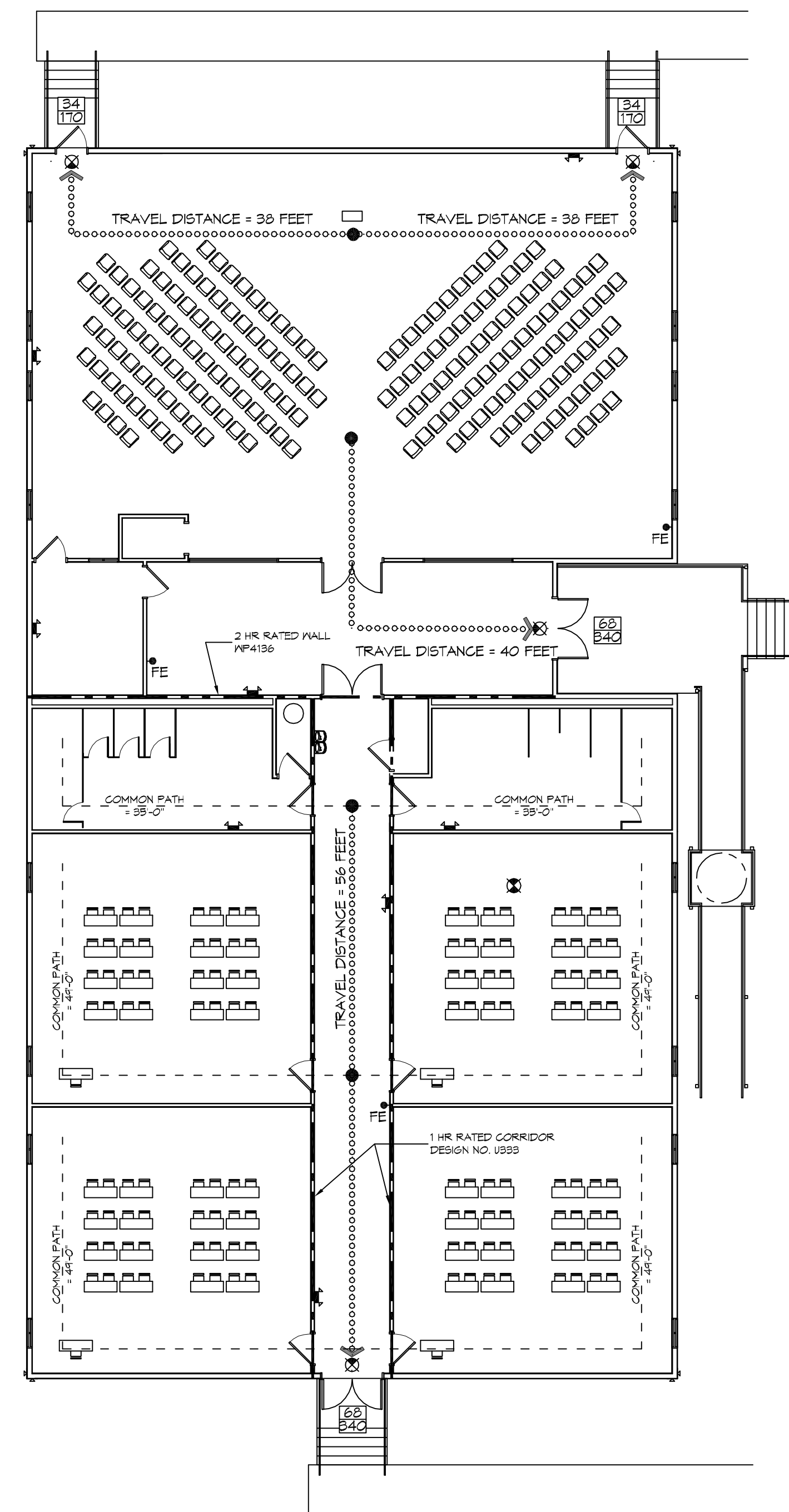
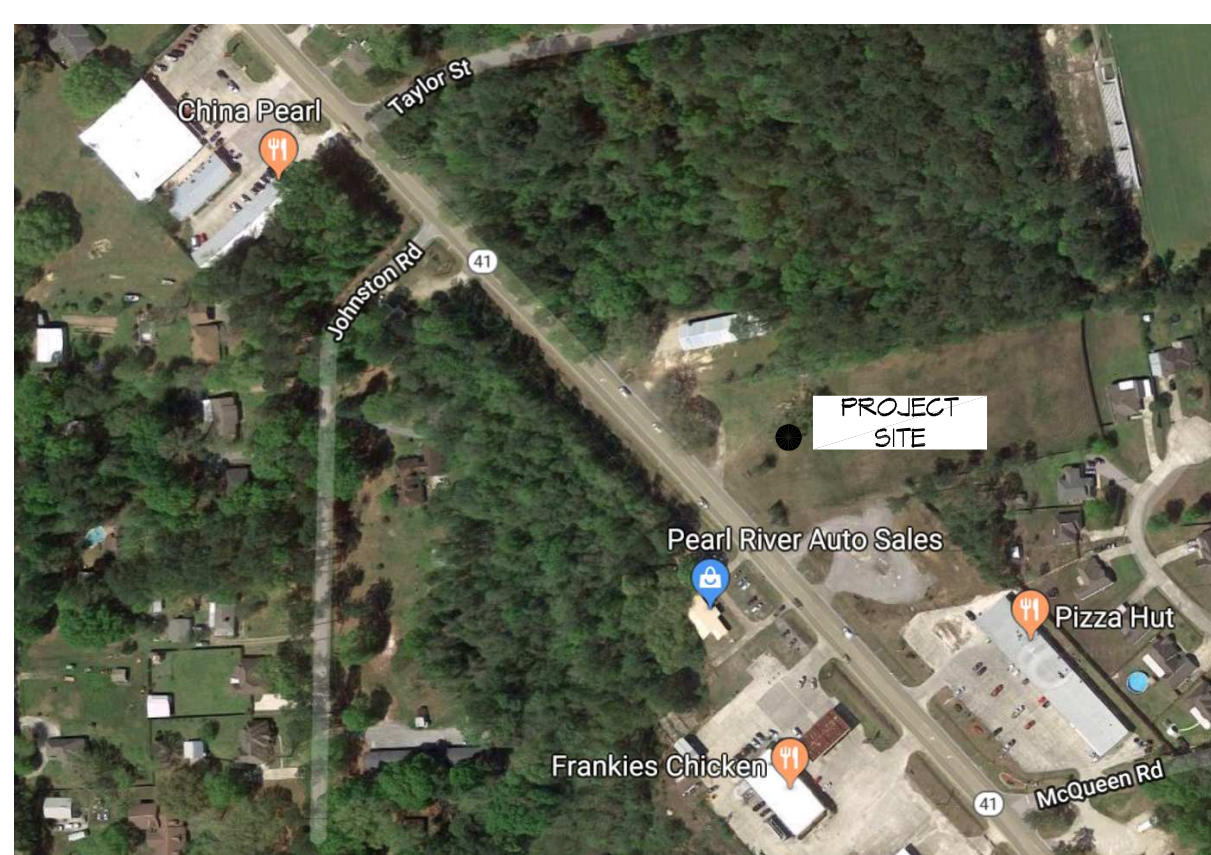
Eqn 5-5
 $A_t = 6,000 \text{ s.f.}$
 $I_f = (F/P - 0.25) \times W/30$
 $F=376\text{ft}; P=376\text{ft}; W=30\text{ft}$
 $I_f = ((376/376) - 0.25) \times (30/30)$
 $I_f = 0.75$

Eqn 5-2
 $A_a = [A_t + (N_s \times I_f)] \times S_a$
 $A_a = [6,000 + (6,000 \times 0.75)] \times 1$
 $A_a = 10,500 \text{ s.f.}$

LIFE-SAFETY LEGEND

SYMBOL	DESCRIPTION
>	EXITS
45	DOOR FIRE RATING (MINUTES)
30	DOOR WIDTH/EGRESS CAPACITY
EL	EXIT LIGHT
FE	FIRE EXTINGUISHER AND CABINET
FE	FIRE EXTINGUISHER W/ WALL MTD BRACKET
.....	COMMON PATH OF TRAVEL
.....	TRAVEL DISTANCE
●	DECISION POINT
---	SMOKE PARTITION
---	ONE-HOUR FIRE RATED PARTITION
---	TWO-HOUR FIRE RATED PARTITION
---	TWO-HOUR FIRE SMOKE PARTITION
---	FOUR-HOUR RATED PARTITION

VICINITY MAP



1 LIFE-SAFETY PLAN
 SCALE: 3/32" = 1'-0"

SHEET INDEX

SHEET #	SHEET TITLE
6001	GENERAL PROJECT, LIFE-SAFETY, AND BUILDING CODE INFORMATION
6002	ACCESSIBILITY INFORMATION
C101	SITE PLAN
S101	FOUNDATION PLAN
A101	FLOOR PLAN
A102	ADA ACCESSIBLE RAMP PLAN AND DETAILS
A103	PORCHES, STAIRS PLANS AND DETAILS
A104	REFLECTED CEILING PLAN
P101	PLUMBING PLAN, RISER, & DETAILS
M101	MECHANICAL PLAN, SCHEDULES, & DETAILS
E101	POWER PLAN
E102	LIGHTING PLAN
E103	CIRCUIT PANELS AND ONE-LINE DIAGRAM

GENERAL NOTES

- ALL MATERIALS AND WORK, INCIDENTAL TO THE CONSTRUCTION OF THIS PROJECT, SHALL CONFORM TO ALL GOVERNING CODES, AND REGULATIONS OF AGENCIES IN AUTHORITY.
- CONTRACTOR SHALL PROVIDE ALL PUBLIC PROTECTIONS NECESSARY AS REQUIRED BY LAW.
- THE DRAWINGS, SPECIFICATIONS AND ANY SUBSEQUENTLY ISSUED ADDENDA, AMENDMENTS OR SUCH CHANGE ORDERS APPROVED BY THE OWNER AND THE CONTRACTOR ARE PART OF THESE CONTRACT DOCUMENTS.
- DO NOT SCALE DRAWINGS.** CONSULT WITH THE ARCHITECT REGARDING ANY ITEMS IN THE CONTRACT DOCUMENTS THAT REQUIRE CLARIFICATION.
- TRASH SHALL BE REMOVED FROM THE SITE NOT LESS THAN TWICE MONTHLY.
- THE GENERAL CONTRACTOR SHALL VERIFY EXISTING CONDITIONS PRIOR TO COMMENCING WORK AND REPORT ANY AND ALL DISCREPANCIES TO THE ARCHITECT.
- CONTRACTOR VEHICLES AND EQUIPMENT NECESSARY FOR CONSTRUCTION MAY BE PARKED ON THE SITE. OTHER VEHICLES PARKED ON THE SITE REQUIRE THE OWNER'S PERMISSION.
- NAMING A CERTAIN BRAND, MAKE OR MANUFACTURER IS TO DESIGNATE THE GENERAL STYLE, TYPE, CHARACTER AND QUALITY STANDARD OF THE PRODUCT DESIRED. SUBSTITUTION REQUESTS MUST BE SUBMITTED PRIOR TO BIDDING.
- ALL MATERIALS/EQUIPMENT SHALL BE INSTALLED PER MANUFACTURER'S RECOMMENDATIONS. WORK NOT CONSISTENT WITH MANUFACTURER'S RECOMMENDATIONS WILL BE REJECTED BY OWNER/ARCHITECT.

DAMMON ENGINEERING, INC.
 LOUISIANA & MISSISSIPPI

www.dammonengineering.com
 info@dammonengineering.com
 554 Old Spanish Trail
 Slidell, LA 70452
 PH: 985.649.8832 F: 985.641.9590

Chief Engineer: Brian Mitchell, PE

DATE	REVISIONS
	# DESCRIPTION



THE CROSSINGS

64452 HIGHWAY 41 PEARL RIVER, LA 70452

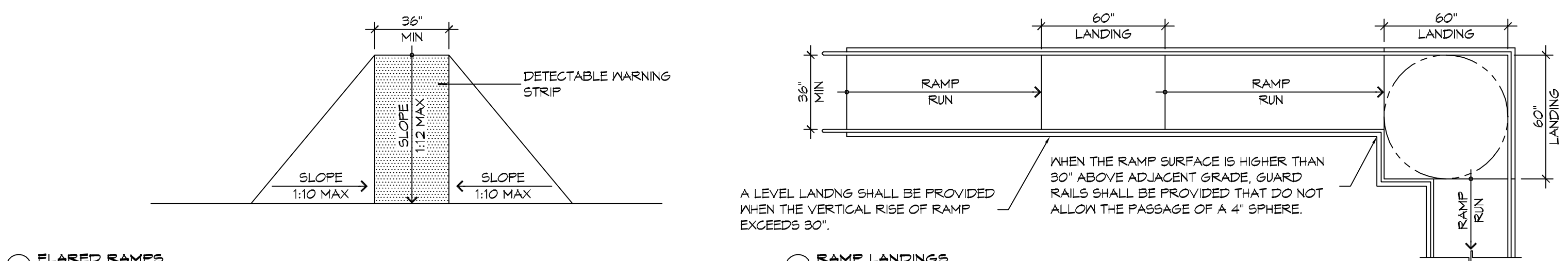
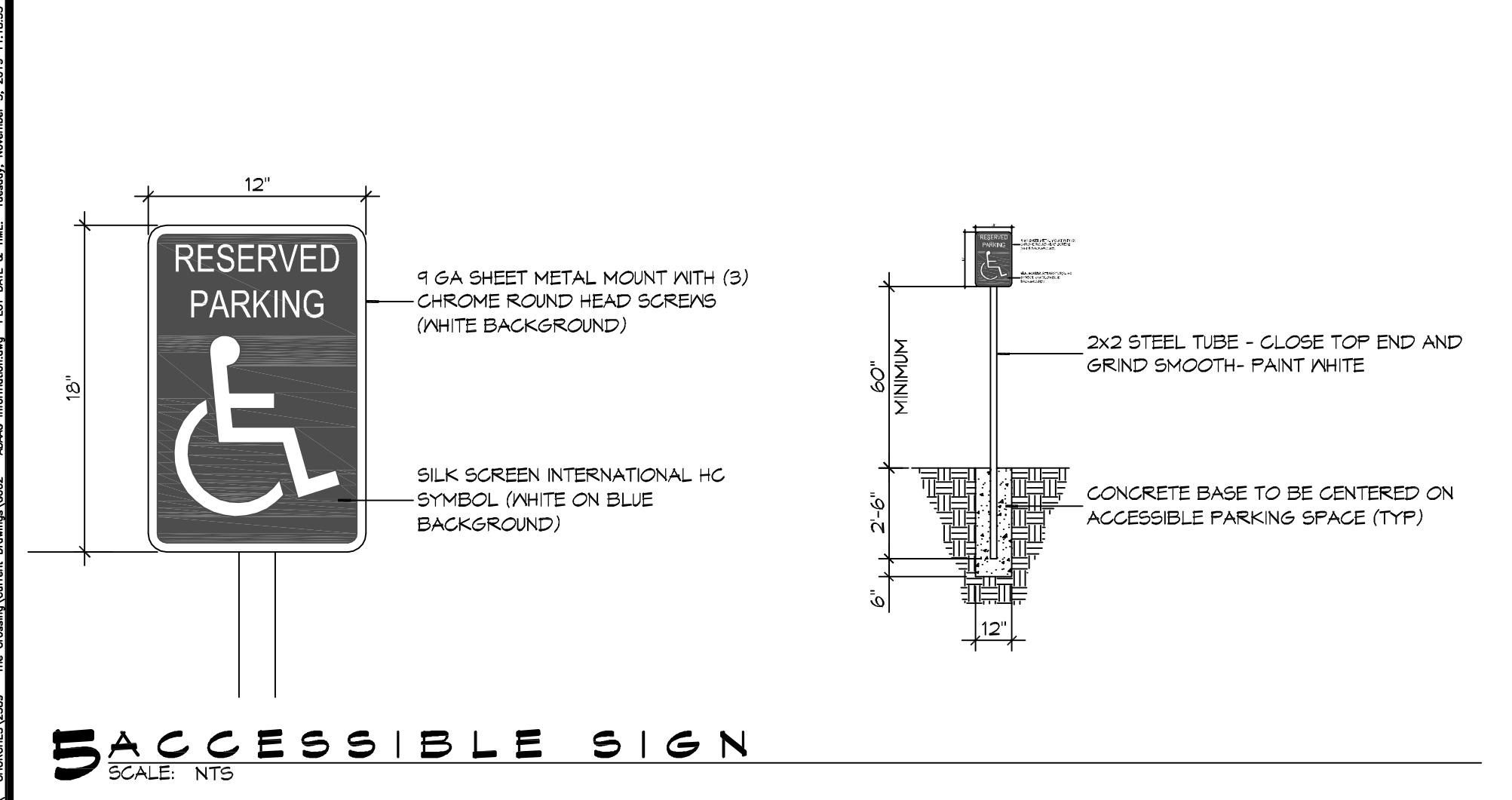
JOB No: 2584 DATE: 11/05/2019

DRAWN BY: JWS RLD CHECKED BY: JWS

SHEET TITLE: GENERAL PROJECT, LIFE-SAFETY, AND BUILDING CODE INFORMATION

DRAWING NUMBER: **GOO1**

SHEET No: 1 of 13

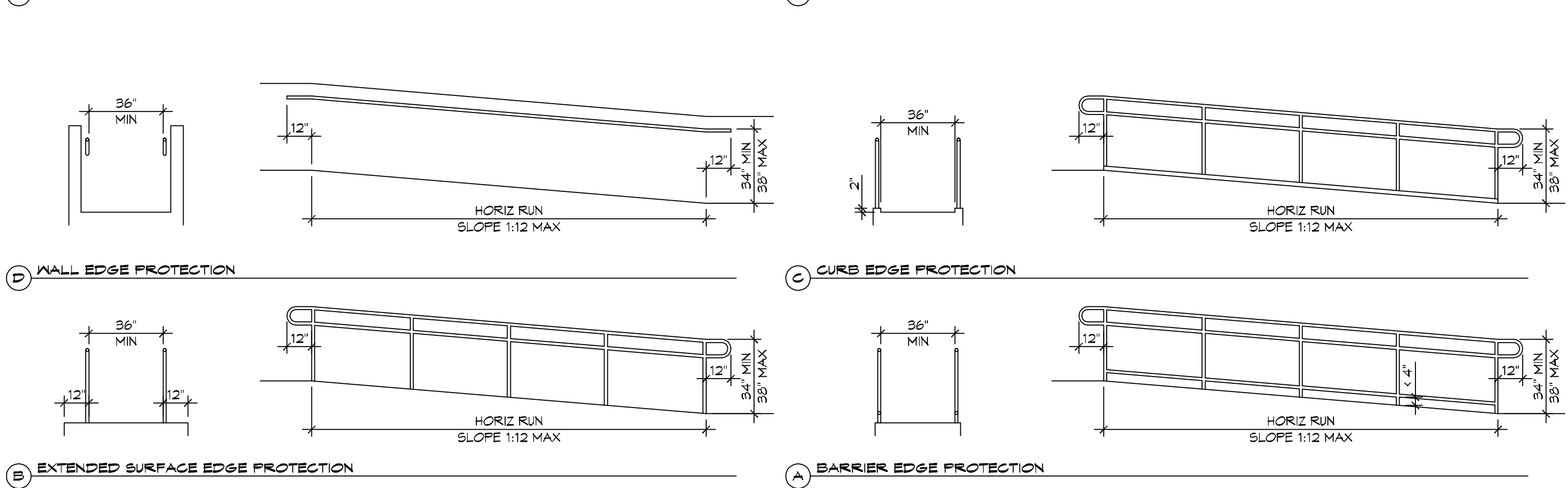
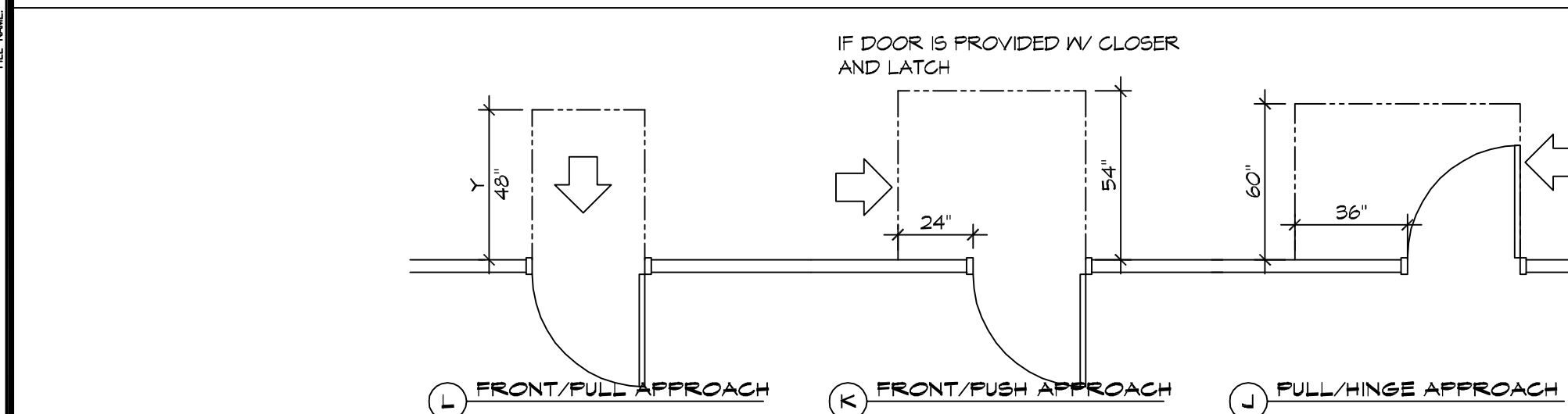


ACCESSIBILITY NOTES

DOOR CLEARANCE NOTES
 ALCOVES SHALL COMPLY WITH THE CLEARANCES FOR FRONT APPROACHES, 31/0002 - 3K/0002.
 DOOR HARDWARE SHALL BE LEVER TYPE.
 MAX DOOR OPENING FORCE:
 INTERIOR HINGED DOORS: 5 LBF
 EXTERIOR HINGED DOORS: 8.5 LBF
 SLIDING OR FOLDING DOORS: 5 LBF
 FIRE DOORS SHALL HAVE THE MINIMUM OPENING FORCE ALLOWABLE BY THE APPROPRIATE ADMINISTRATIVE AUTHORITY.
 HARDWARE REQUIRED FOR ACCESSIBLE DOOR PASSAGE SHALL BE MOUNTED NO HIGHER THAN 48" AND NOT LESS THAN 34" ABOVE FINISHED FLOOR.
 THE FLOOR OR GROUND AREA WITHIN THE REQUIRED CLEARANCES SHALL BE LEVEL AND CLEAR.
 THRESHOLDS AT DOORWAYS SHALL NOT EXCEED 3/4" IN HEIGHT FOR EXTERIOR SLIDING DOORS OR 1/2" FOR OTHER TYPES OF DOORS. RAISED THRESHOLDS AND FLOOR LEVEL CHANGES AT ACCESSIBLE DOORWAYS SHALL BE BEVELED WITH A SLOPE NO GREATER THAN 1:2.
 DOORWAYS SHALL HAVE A MINIMUM CLEAR OPENING OF 32" WITH THE DOOR OPEN 90°, MEASURED BETWEEN THE FACE OF THE DOOR AND THE OPPOSITE STOP. OPENINGS MORE THAN 24" IN DEPTH SHALL MAINTAIN 32" MIN CLEARANCE.

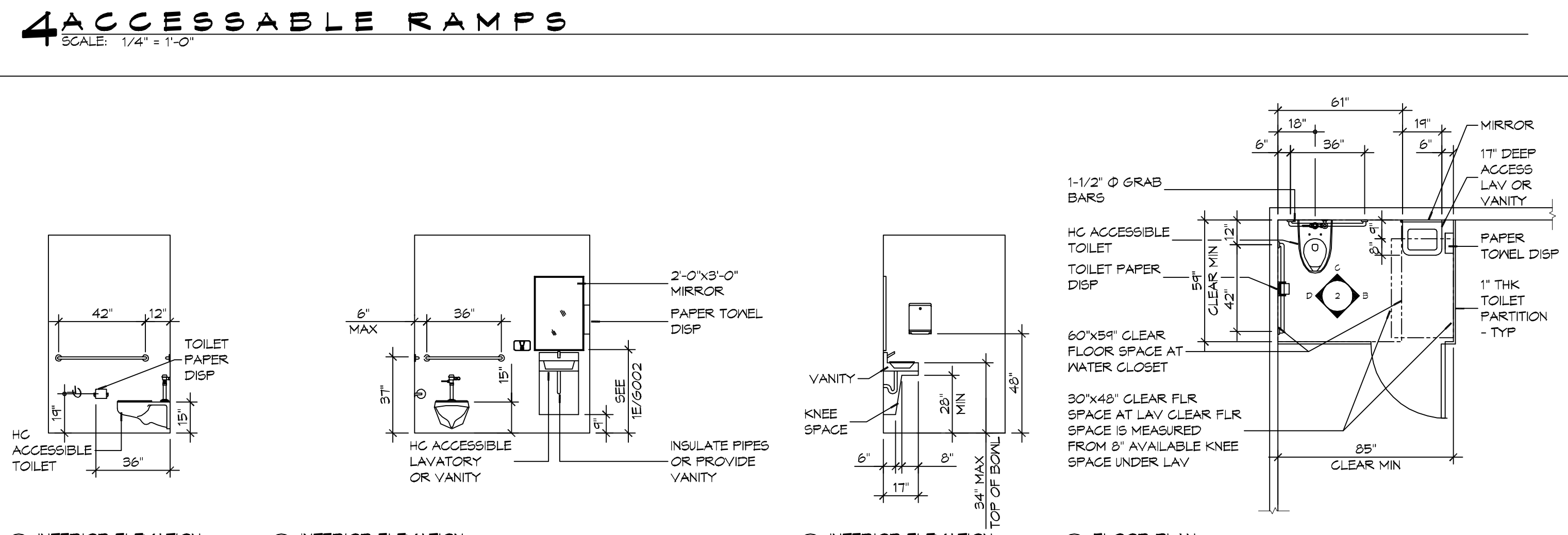
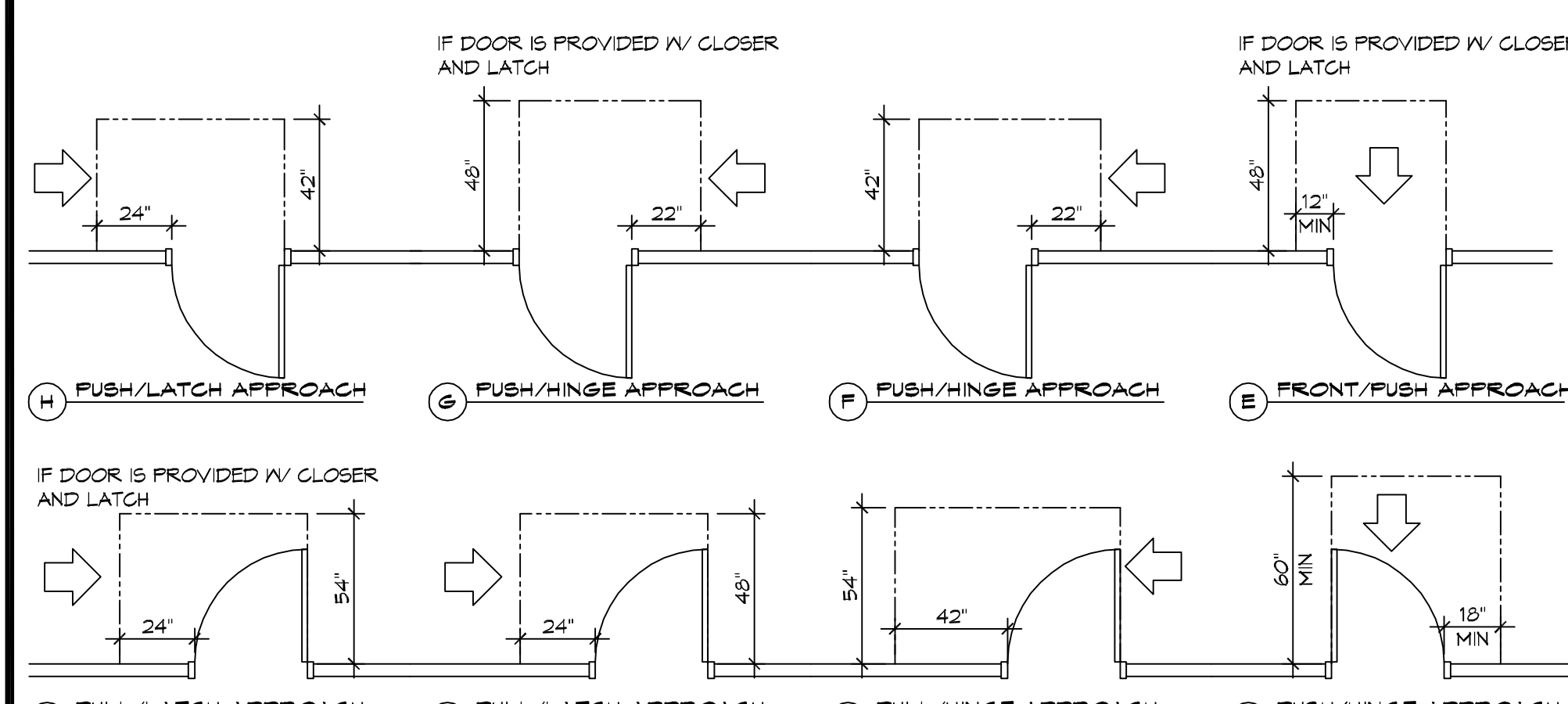
RAMP NOTES
 THE CLEAR SPACE BETWEEN THE HANDRAIL AND THE WALL SHALL BE MIN 1-1/2" CLEAR.
 GRIPPING SURFACES SHALL BE CONTINUOUS AND UNOBSTRUCTED.
 ENDS OF HANDRAILS SHALL BE EITHER ROUNDED OR RETURNED SMOOTHLY TO FLOOR, WALL, OR POST.
 HANDRAILS SHALL NOT ROTATE WITHIN THEIR FITTINGS.
 THE CROSS SLOPE OF RAMP SURFACES SHALL BE NO GREATER THAN 1:50.
 OUTDOOR RAMPS AND THEIR APPROACHES SHALL BE DESIGNED SO THAT WATER WILL NOT ACCUMULATE ON WALKING SURFACES.
 RAMPS AND LANDINGS WITH DROP-OFFS SHALL HAVE CURBS, WALLS, RAILINGS, OR PROJECTING SURFACES THAT PREVENT PEOPLE FROM SLIPPING OFF THE RAMP. CURBS SHALL BE A MINIMUM OF 2" HIGH.
 HANDRAILS SHALL BE PROVIDED ALONG BOTH SIDES OF RAMP SEGMENTS. THE INSIDE HANDRAIL ON SWITCHBACK OR DOGLEG RAMPS SHALL ALWAYS BE CONTINUOUS.
 RAMP LANDINGS SHALL BE AT LEAST AS WIDE AS THE RAMP RUN LEADING TO IT.

DAMMON ENGINEERING, INC.
 LOUISIANA & MISSISSIPPI
 Chief Engineer: Brian Match, PE
 554 Old Spanish Trail
 Slidell, LA 70458
 www.dammonengineering.com
 info@dammonengineering.com
 PH: 985.649.5832 F: 985.641.9590



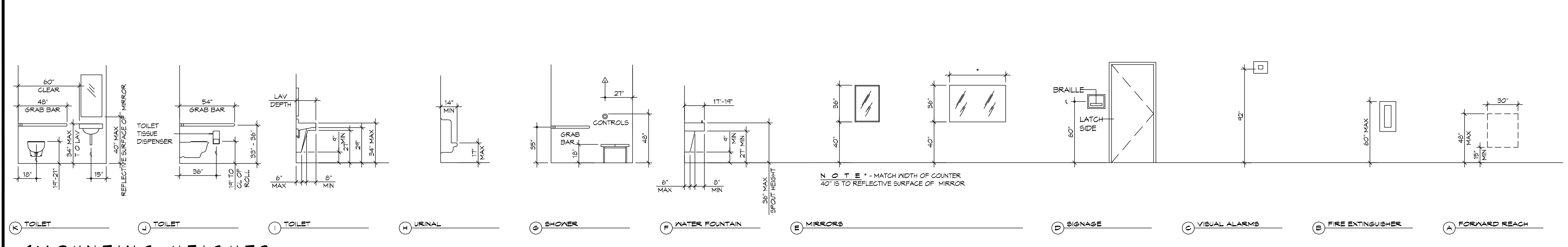
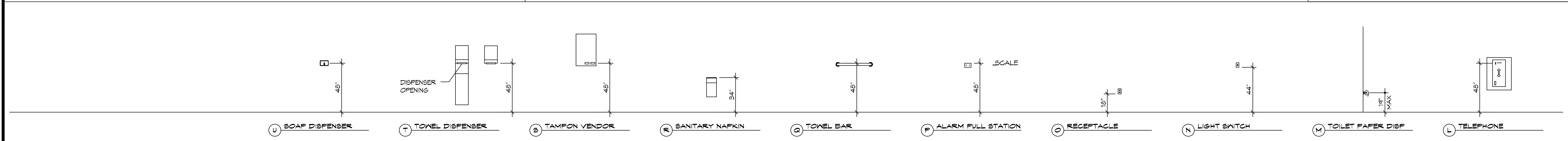
GENERAL SITE ACCESSIBILITY NOTES

- ACCESSIBILITY SIGNAGE SHALL COMPLY WITH ADAAG 2010 GUIDELINES SECTION 303.7.
- SEE SHEET FOR ACCESSIBLE RAMP AND HANDRAIL DESIGNS WHERE THEY OCCUR.
- ALL ACCESSIBLE PARKING SPACES AND AISLES THAT SERVE THEM SHALL COMPLY WITH ADAAG 2010 GUIDELINES SECTIONS 302.4 AND 302.5.
- OPENINGS IN GROUND SURFACES SHALL COMPLY WITH ADAAG 2010 GUIDELINES SECTION 302.3.
- VERTICAL CHANGES IN ELEVATION ALONG ALL ACCESSIBLE ROUTES SHALL COMPLY WITH ADAAG 2010 GUIDELINES SECTIONS 303.2, 303.3, AND 303.4.
- PARKING SPACES DESIGNATED AS ACCESSIBLE SHALL INCLUDE THE INTERNATIONAL SYMBOL OF ACCESSIBILITY COMPLYING WITH ADAAG 2010 GUIDELINES SECTIONS 303.7.2.1 AND 302.6.
- ALL ACCESSIBLE PARKING SPACES AND ROUTES SERVING THEM SHALL HAVE A ROUGH, SLIP-RESISTANT SURFACE OR LIGHT BROOM FINISH IN COMPLIANCE WITH ADAAG 2010 GUIDELINES SECTION 302.1.



3 ADA DOOR CLEARANCES
 SCALE: 1/4" = 1'-0"

2 RESTROOM CLEARANCES
 SCALE: 1/4" = 1'-0"



1 MOUNTING HEIGHTS
 SCALE: 1/4" = 1'-0"

REVISIONS	DATE	DESCRIPTION

JARED M. SIMONEUX
 REG. NO. 7751
 ARCHITECT
 STATE OF LOUISIANA
 REGISTERED ARCHITECT

THE CROSSING

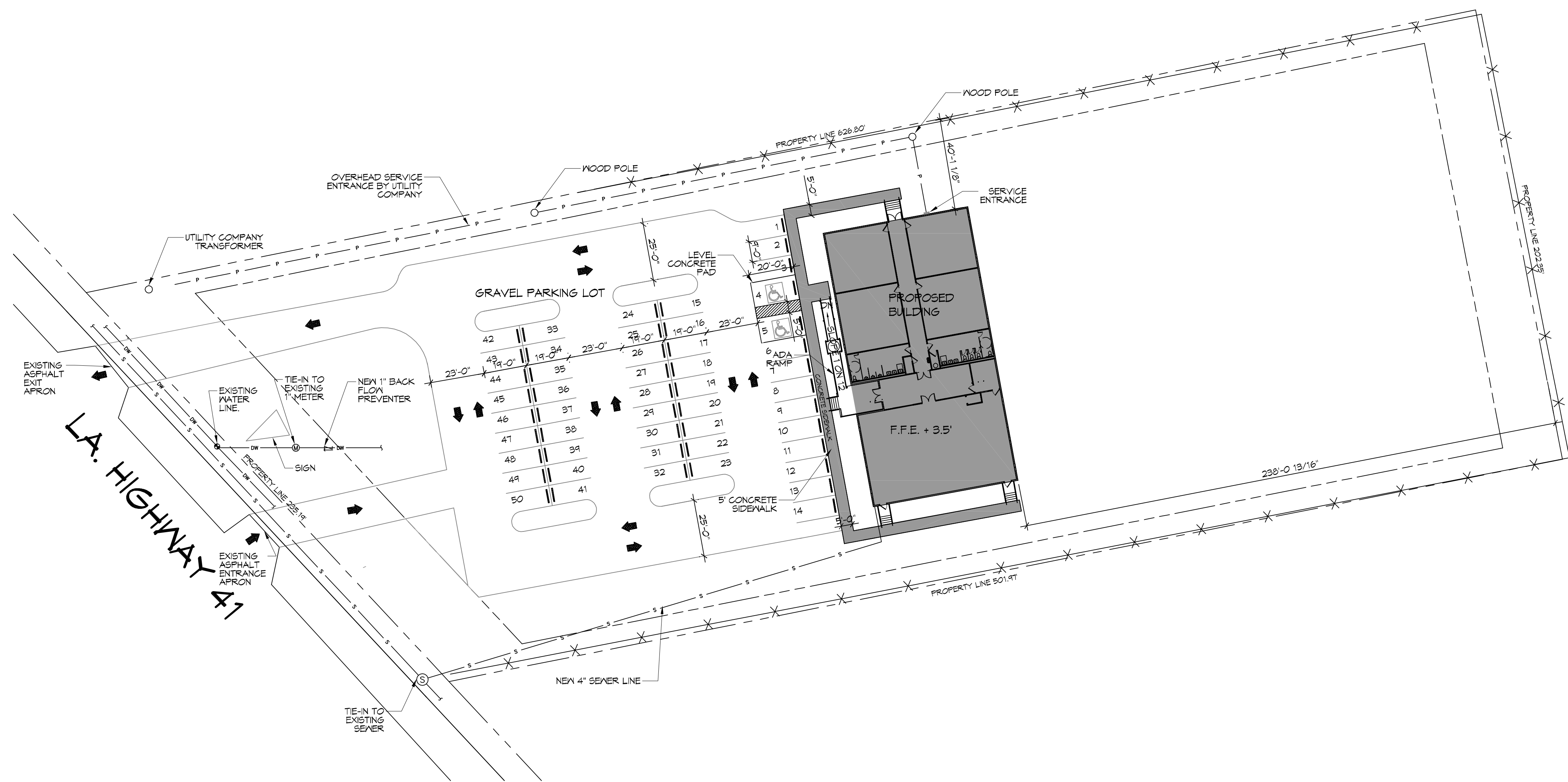
64485 HIGHWAY 41
 PEARL RIVER, LA 70482
 JOB No: 2594 DATE: 11/05/2018
 DRAWN BY: JAS
 RLD / CHECKED BY: JAS

SHEET TITLE:
 ACCESSIBILITY INFORMATION

DRAWING NUMBER:
GOO2

SHEET No: 2 of 13

THE LAYOUT AND DIMENSIONS SHOWN ON THIS GENERAL ENGINEERING PLAN ARE THE PROPERTY OF DAMMON ENGINEERING, INC. ANY REPRODUCTION OR USE OF THIS PLAN WITHOUT THE WRITTEN PERMISSION OF DAMMON ENGINEERING, INC. IS STRICTLY PROHIBITED.

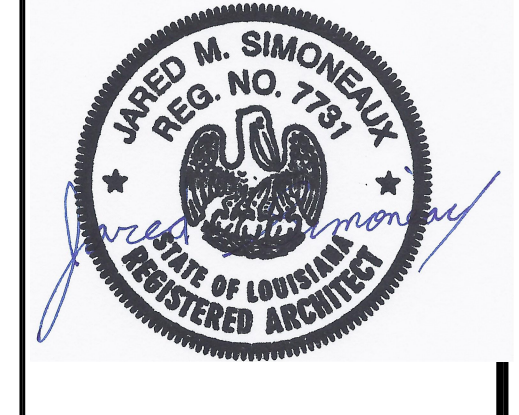


6 SITE PLAN
 SCALE: 1" = 30'
 NEW SITE

PLANNING
ZONED "B2" HAY COMMERCIAL
FLOOD ZONE
ZONE "X"
BUILDING SETBACK LINES
FRONT - 35' SIDES - 10' REAR - 25'
BUILDING ELEVATION
BASE FLOOD ELEVATION = 0' FINISHED FLOOR ELEVATION = +3.5'
PARKING
1 SPACE PER 4 OCCUPANTS 176 SEATS / 4 = 44 PARKING SPACES REQUIRED 2 HANDICAP PARKING SPACES PROVIDED 48 REGULAR PARKING SPACES PROVIDED TOTAL PARKING SPACES PROVIDED 50
SITE LIGHTING
EXTERIOR LIGHTING SHALL BE SHADED OR INWARDLY DIRECTED IN SUCH A MANNER SO THAT NO DIRECT LIGHTING OR GLARE BE CAST BEYOND THE PROPERTY LINE. THE INTENSITY OF SUCH LIGHTING SHALL NOT EXCEED ONE FOOT CANDLE AS MEASURED AT THE ABUTTING PROPERTY LINE.

DAMMON ENGINEERING, INC.
 LOUISIANA & MISSISSIPPI
 Chief Engineer: Brian Mitch, PE
 594 Old Spanish Trail
 Slidell, LA 70468
 www.dammonengineering.com
 info@dammonengineering.com
 PH: 985.649.2332, FX: 985.649.2320

#	DESCRIPTION	REVISIONS	DATE



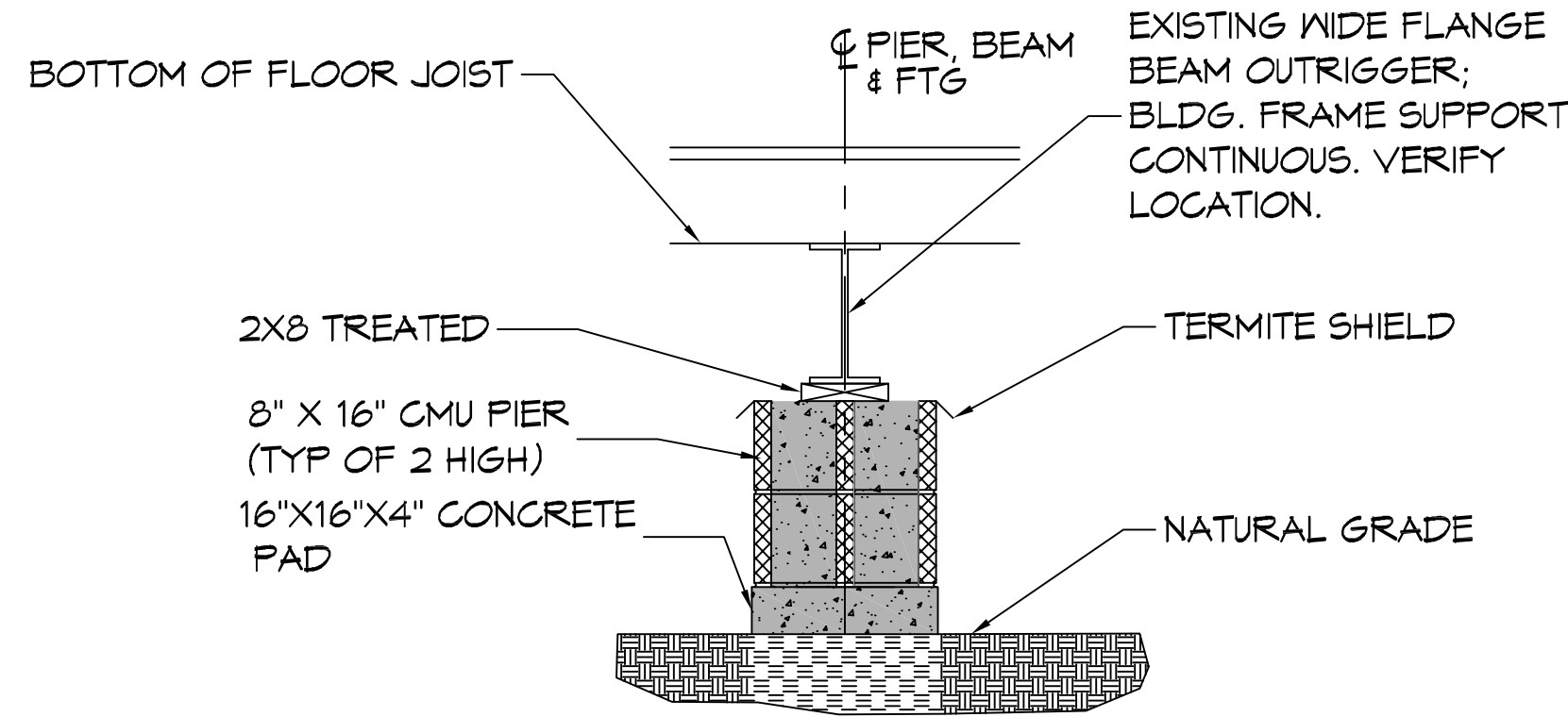
THE CROSSING
 64452 HIGHWAY 41,
 PEARL RIVER, LA 70452
 JOB No: 2504 | DATE: 11/05/2018
 DRAWN BY: JUS | CHECKED BY: RLD

SHEET TITLE:
 SITE PLAN
 DRAWING NUMBER:
C101
 SHEET No: 3 of 13

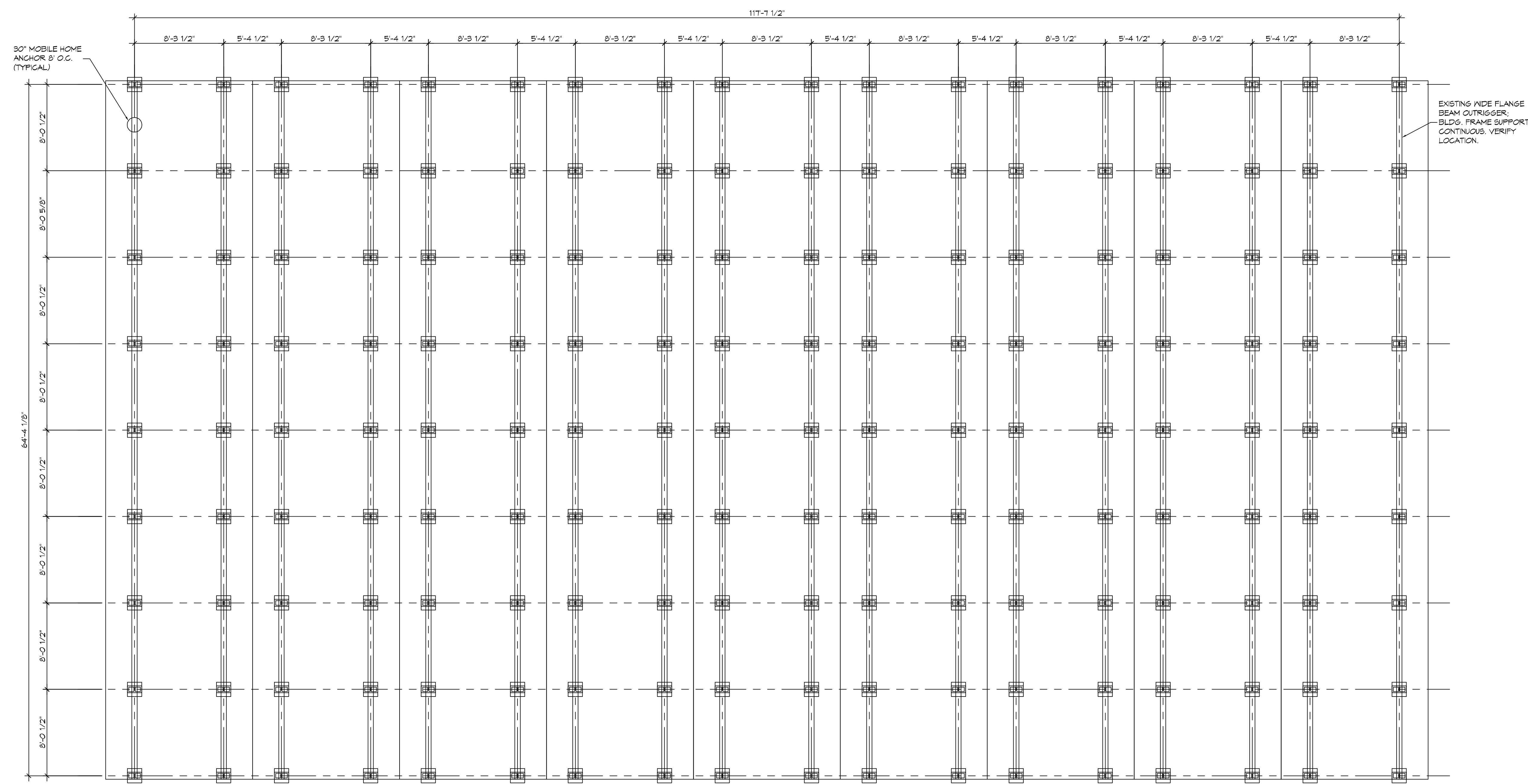
FILE NAME: A:_CAD\DWG\3389 - The Crossing\3389 - Foundation\3389 - Foundation.dwg PLOT DATE: 8/26/14 11:05:41 AM

GENERAL FOUNDATION NOTES

1. THE CONTRACTOR SHALL VERIFY ALL BEAM BEAM LOCATIONS PRIOR TO INSTALLING PADS AND BLOCKS AND INSTALL ACCORDINGLY.
2. ALL SOIL BELOW SHALL RECEIVE TERMITE TREATMENT.



FOUNDATION SECTION
SCALE: 1/2" = 1'-0"



FOUNDATION PLAN
SCALE: 3/16" = 1'-0"

DAMMON ENGINEERING, INC.
LOUISIANA & MISSISSIPPI
www.dammonengineering.com
info@dammonengineering.com
Chief Engineer: Brian Mistich, PE
554 Old Spanish Trail
Slidell, LA 70568
PH: 985.649.5832 F: 985.641.9950

REVISIONS	DATE
# DESCRIPTION	



THE CROSSING

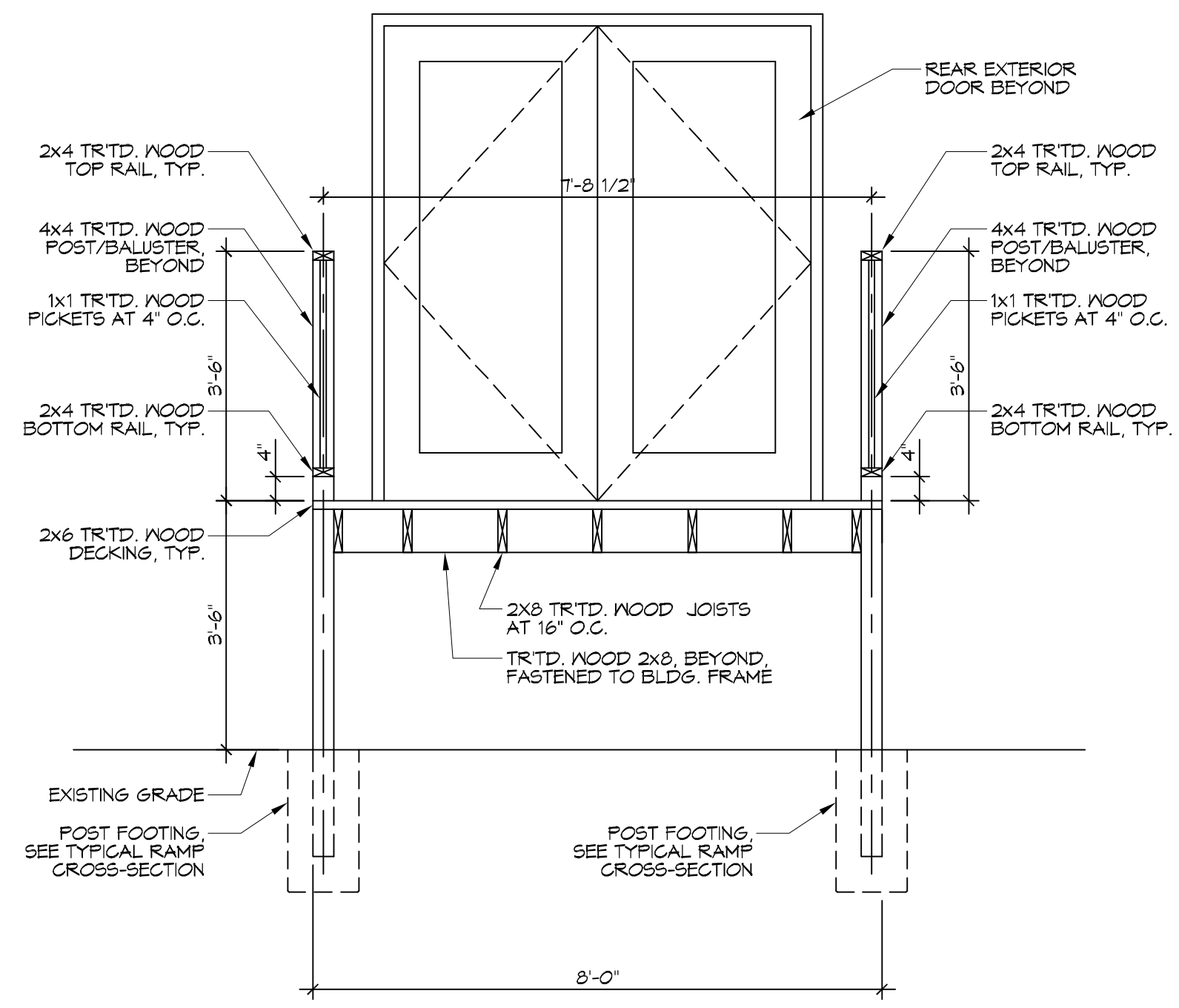
64482 HIGHWAY 41
PEARL RIVER, LA 70462
JOB No: 2584 DATE: 11/05/2014
DRAWN BY: BAW
CHECKED BY: CKD

SHEET TITLE:
FOUNDATION PLAN

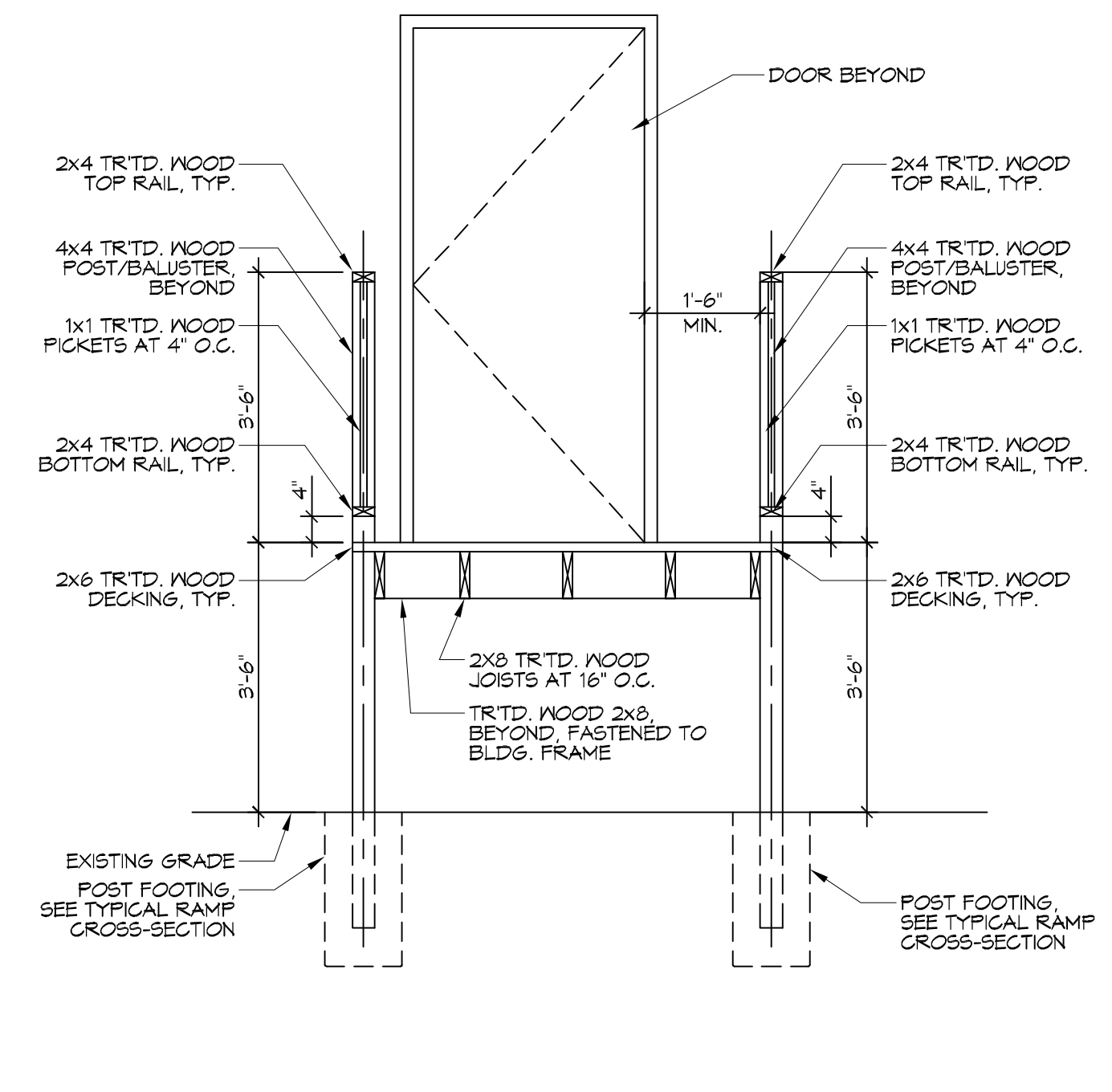
DRAWING NUMBER:
S101

SHEET No: 4 of 13

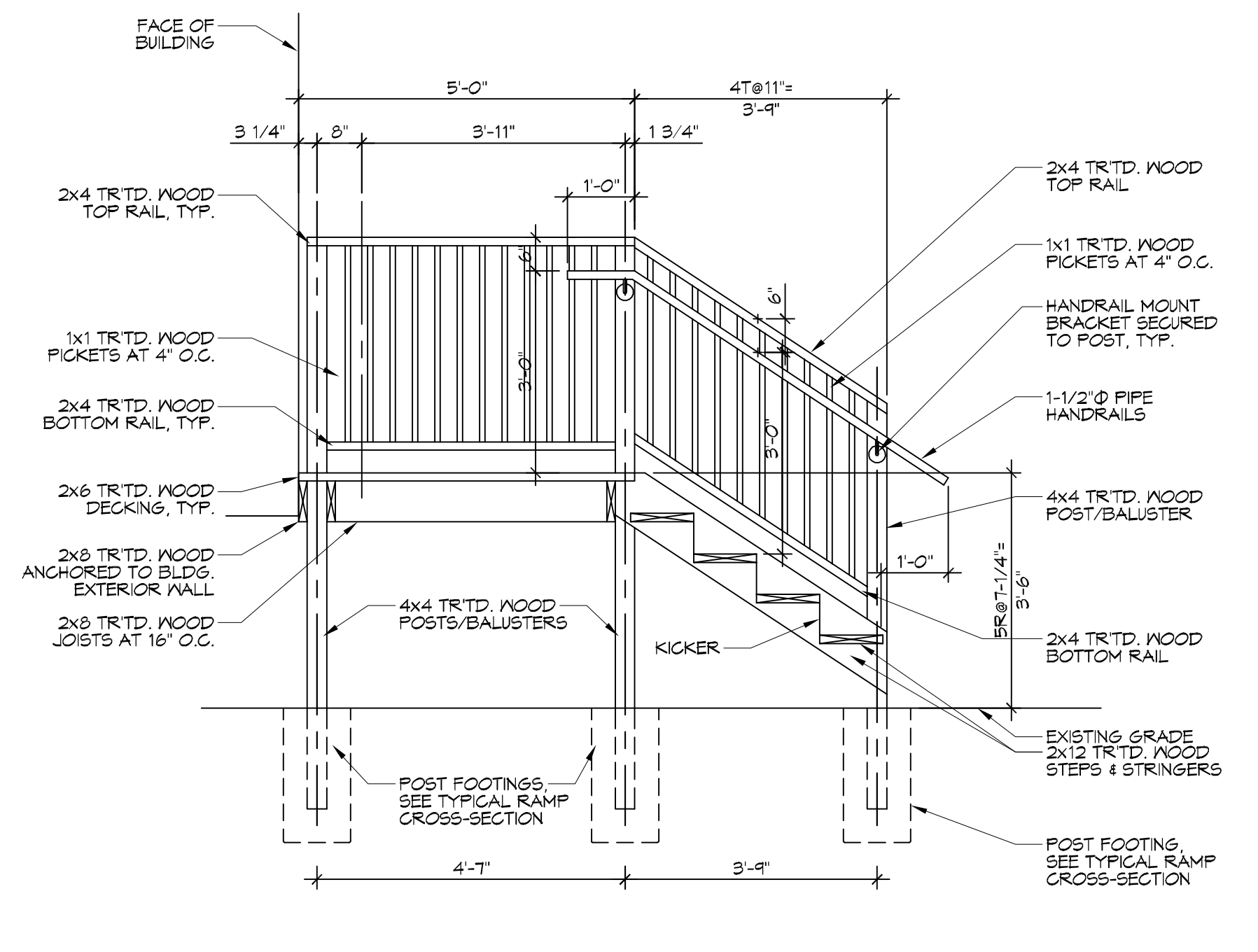
THE MATERIALS LISTED ARE THE GENERAL CONTRACTOR'S RESPONSIBILITY. THE CONTRACTOR SHALL BE RESPONSIBLE FOR OBTAINING ALL NECESSARY PERMITS AND APPROVALS FROM THE LOCAL, STATE AND FEDERAL AGENCIES. THE CONTRACTOR SHALL BE RESPONSIBLE FOR OBTAINING ALL NECESSARY PERMITS AND APPROVALS FROM THE LOCAL, STATE AND FEDERAL AGENCIES.



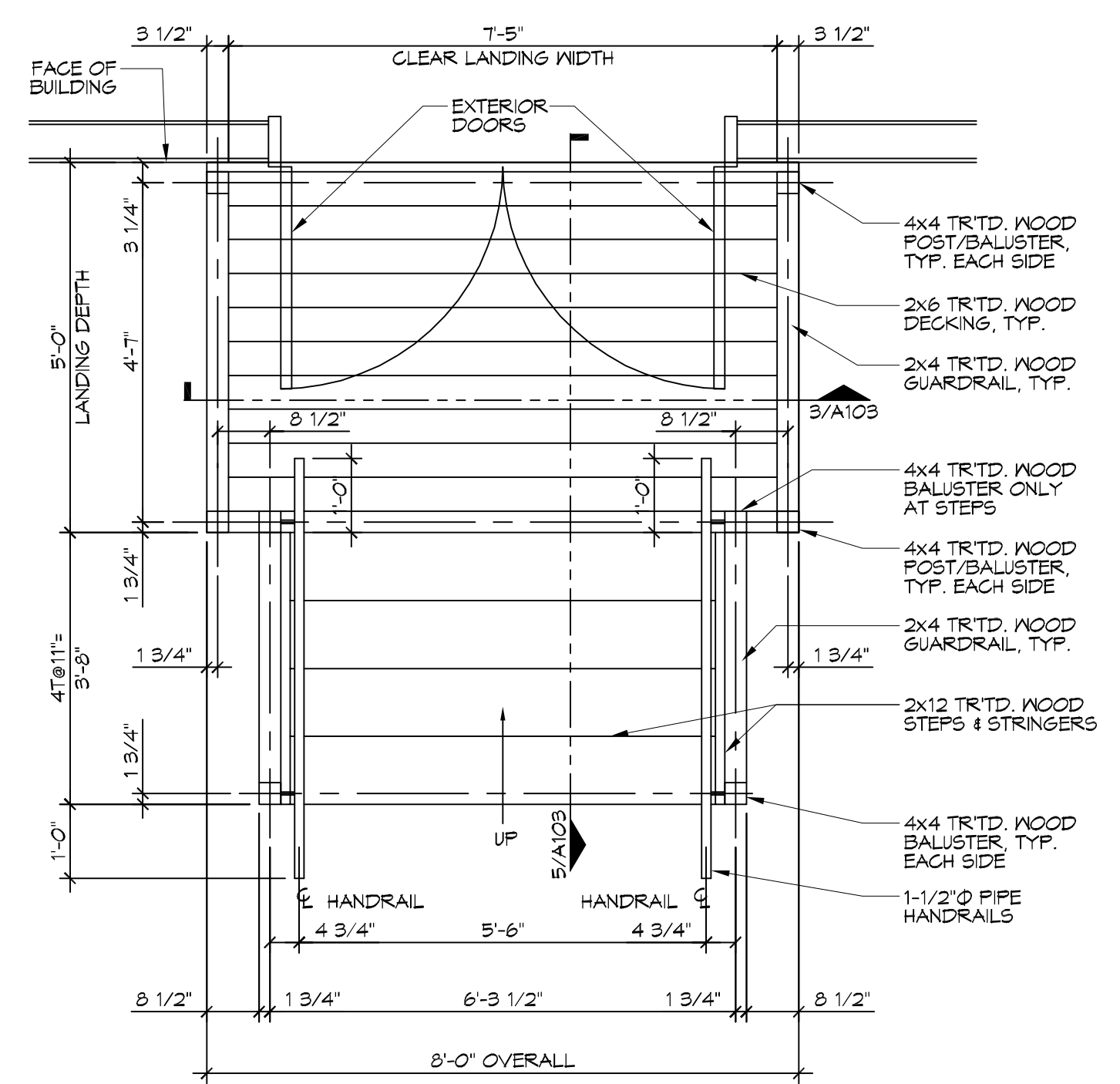
16 PORCH SECTION
SCALE: 1/2"=1'-0" PORCH AT DOUBLE EXTERIOR DOOR



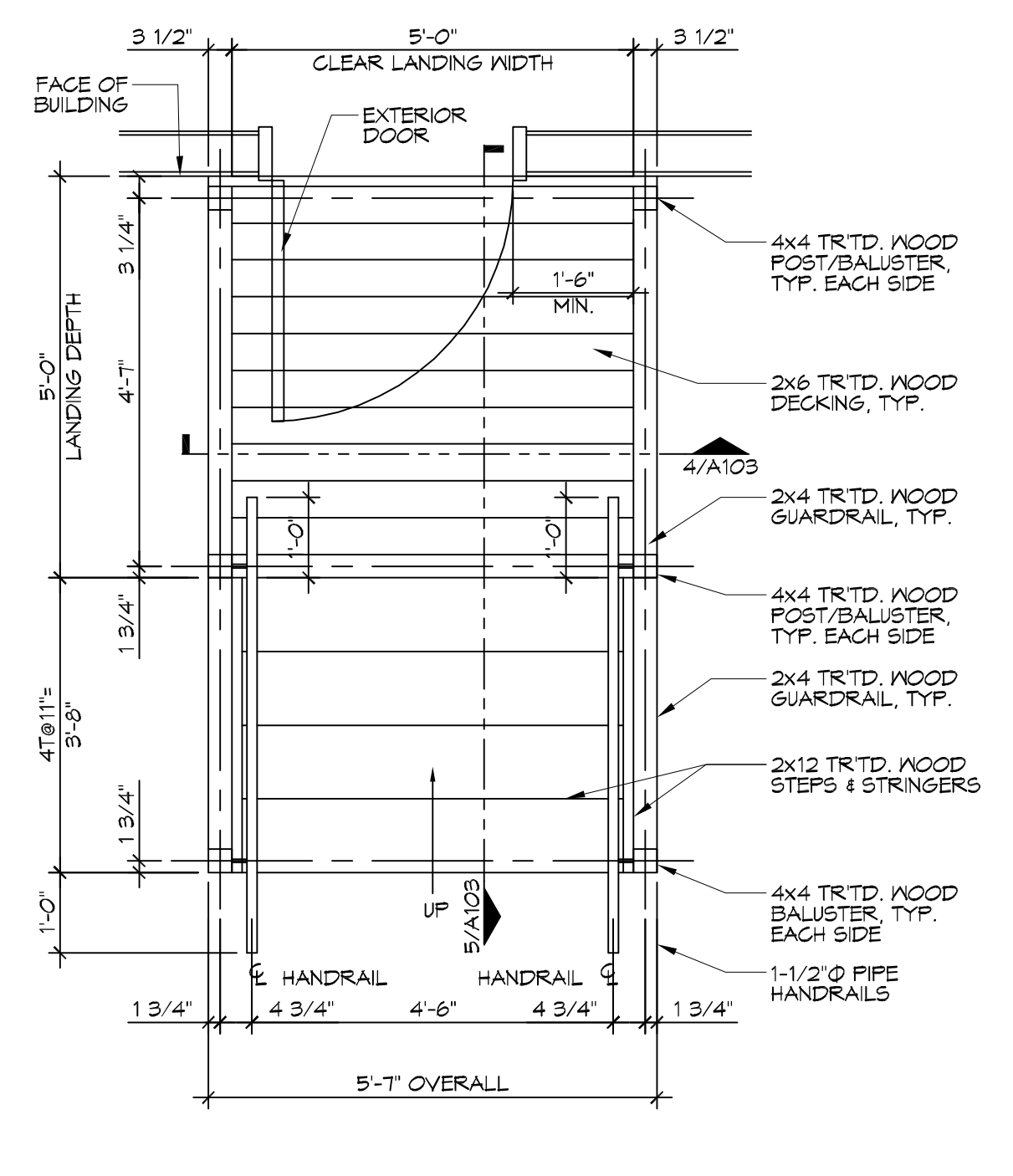
17 PORCH SECTION
SCALE: 1/2"=1'-0" PORCH AT SINGLE EXTERIOR DOOR



18 TYP. PORCH & STAIR SECTION
SCALE: 1/2"=1'-0" PORCH AT SINGLE OR DOUBLE EXTERIOR DOOR



14 PORCH/STAIRS PLAN
SCALE: 1/2"=1'-0" PORCH & STAIRS AT DOUBLE EXTERIOR DOOR



15 PORCH/STAIRS PLAN
SCALE: 1/2"=1'-0" PORCH & STAIRS AT SINGLE EXTERIOR DOOR

#	DESCRIPTION	REVISIONS	DATE



THE CROSSING
 SHEET TITLE:
 PORCHES & STAIRS -
 PLANS & DETAILS
 DRAWING NUMBER:
A103
 SHEET No: 1 of 13

DRAWN BY: JUS
 CHECKED BY: RLD
 DATE: 11/05/2018
 JOB No: 2894
 64452 HIGHWAY 41,
 PEARL RIVER, LA 70452

PTAC AIR UNIT SCHEDULE															
AIR HANDLER															
TAG	AREA SERVED	BARD MODEL NO.	NOMINAL TONS	TOTAL CFM	OA CFM	COOLING			Motor HP	ESP (" WC)	HEAT KW	POWER		REMARKS	
						TMBH	EDB	EWB				VAC	PH		MCA
AC-1	Auditorium - 101	WA423-A05M	3.5	1360	260	42	80.1	70.8	1/3	0.4	3.8	208	1	35	1, 2, 3, 4
AC-2	Auditorium - 101	WA423-A05M	3.5	1420	260	42	80.1	70.8	1/3	0.3	3.8	208	1	35	1, 2, 3, 4
AC-3	Auditorium - 101	WA423-A05M	3.5	1420	260	42	80.1	70.8	1/3	0.3	3.8	208	1	35	1, 2, 3, 4
AC-4	Auditorium - 101	WA423-A05M	3.5	1440	260	42	80.1	70.8	1/3	0.3	3.8	208	1	35	1, 2, 3, 4
AC-5	Classroom 109	WA423-A05M	3.5	1400	380	42	83.6	72.5	1/3	0.3	3.8	208	1	35	1, 2, 3, 4
AC-6	Classroom 110	WA423-A05M	3.5	1400	380	42	83.6	72.5	1/3	0.3	3.8	208	1	35	1, 2, 3, 4
AC-7	Classroom 111	WA423-A05M	3.5	1420	380	42	83.6	72.5	1/3	0.3	3.8	208	1	35	1, 2, 3, 4
AC-8	Classroom 112	WA423-A05M	3.5	1420	380	42	83.6	72.5	1/3	0.3	3.8	208	1	35	1, 2, 3, 4
AC-9	Lobby & Corridor	WA372-A05M	3	1100	220	36	80.5	69.7	1/3	0.3	3.8	208	1	32	1, 2, 3, 4

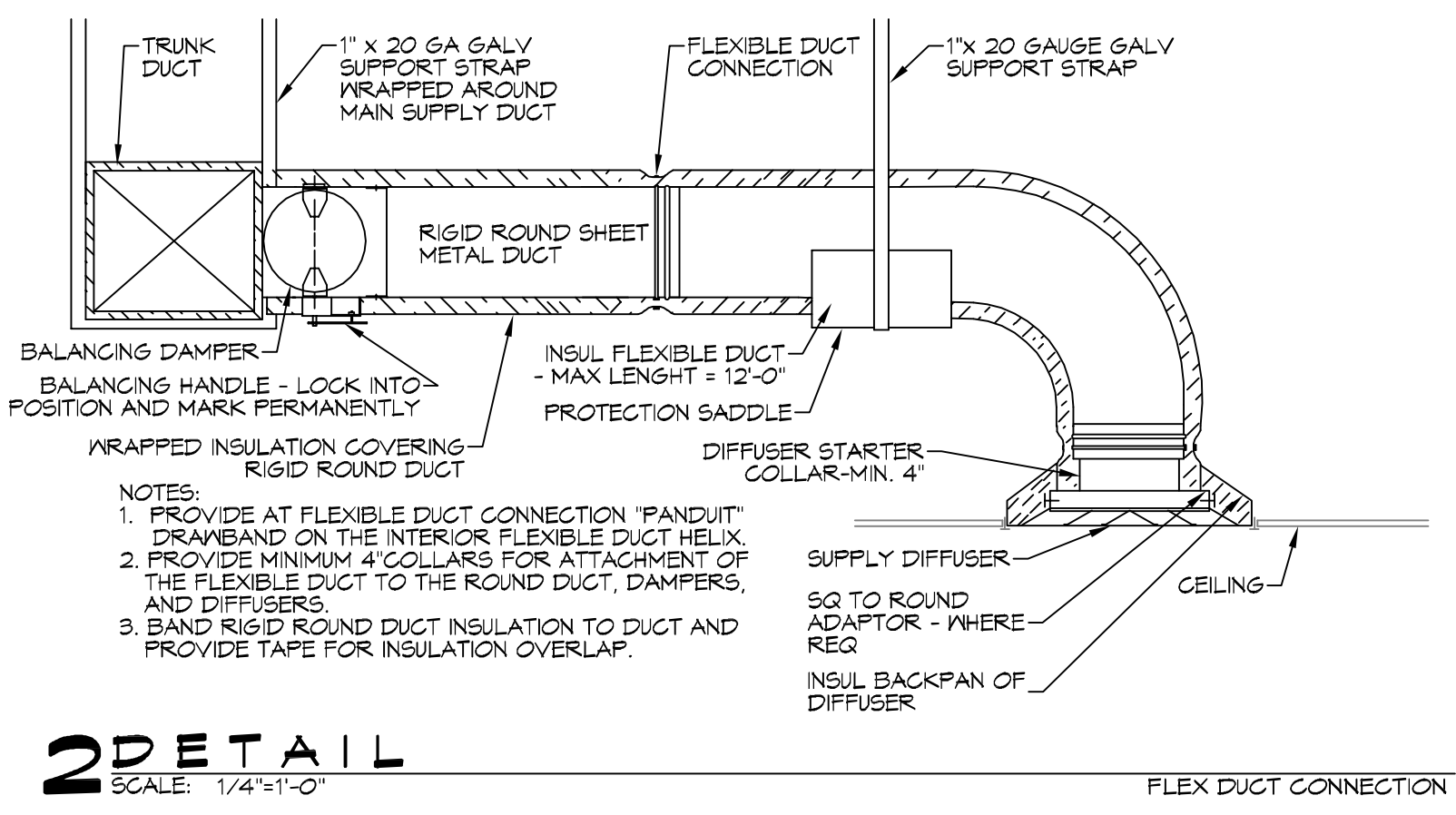
- NOTES:
- Provide washable filter media, single point power connection, crankcase heat, time delay relay & programmable 7/24 thermostat with lockable cover.
 - Cooling capacities to be rated in accordance with AHRI standard 210/290 for ASHRAE standard design weather conditions in New Orleans, LA.
 - Install units in accordance with manufacturer's recommendations.
 - Coordinate with Architect / Owner for colors and finishes.

DIFFUSER SCHEDULE				
Mark No.	Service	Neck Size	Description	
A	Supply Air	Ref. Plan	24"x24" plaque diffuser, Titus "Omni" or equal	
B	Supply Air	Ref. Plan	12"x12" plaque diffuser, Titus "Omni" or equal	

1. Coordinate with Architect / Owner for colors and finish.

Exhaust Fan Schedule							
Tag	Fan	Power			Make / Model	Remarks	
	Airflow (CFM)	TSP ("wc)	Amps	RPM	Volts	Phase	Hz
EF-1	250	0.25	2.1	905	120	1	60
							Broan L250

1. Install per Manufacturer's recommendations.
2. Furnish with grille, speed control and backdraft damper.



2 DETAIL
SCALE: 1/4"=1'-0"

LEGEND

- SUPPLY AIR GRILLE
- TWO-WAY BLOW/DISCHARGE
- EXHAUST FAN
- THERMOSTAT
- SUPPLY AIR DUCT
- DAMPER CONTROL
- FIRE DAMPER
- ROUND FLEX DUCT, MAX LENGTH 12'-0", MIN. R-6, PROVIDE MAN. DAMPER AT DIFFUSER CONNECTIONS, DUCT SIZE AS FOLLOWS:
280 CFM TO 350 CFM = 10"
220 CFM TO 280 CFM = 8"
150 CFM TO 200 CFM = 7"
100 CFM TO 150 CFM = 6"

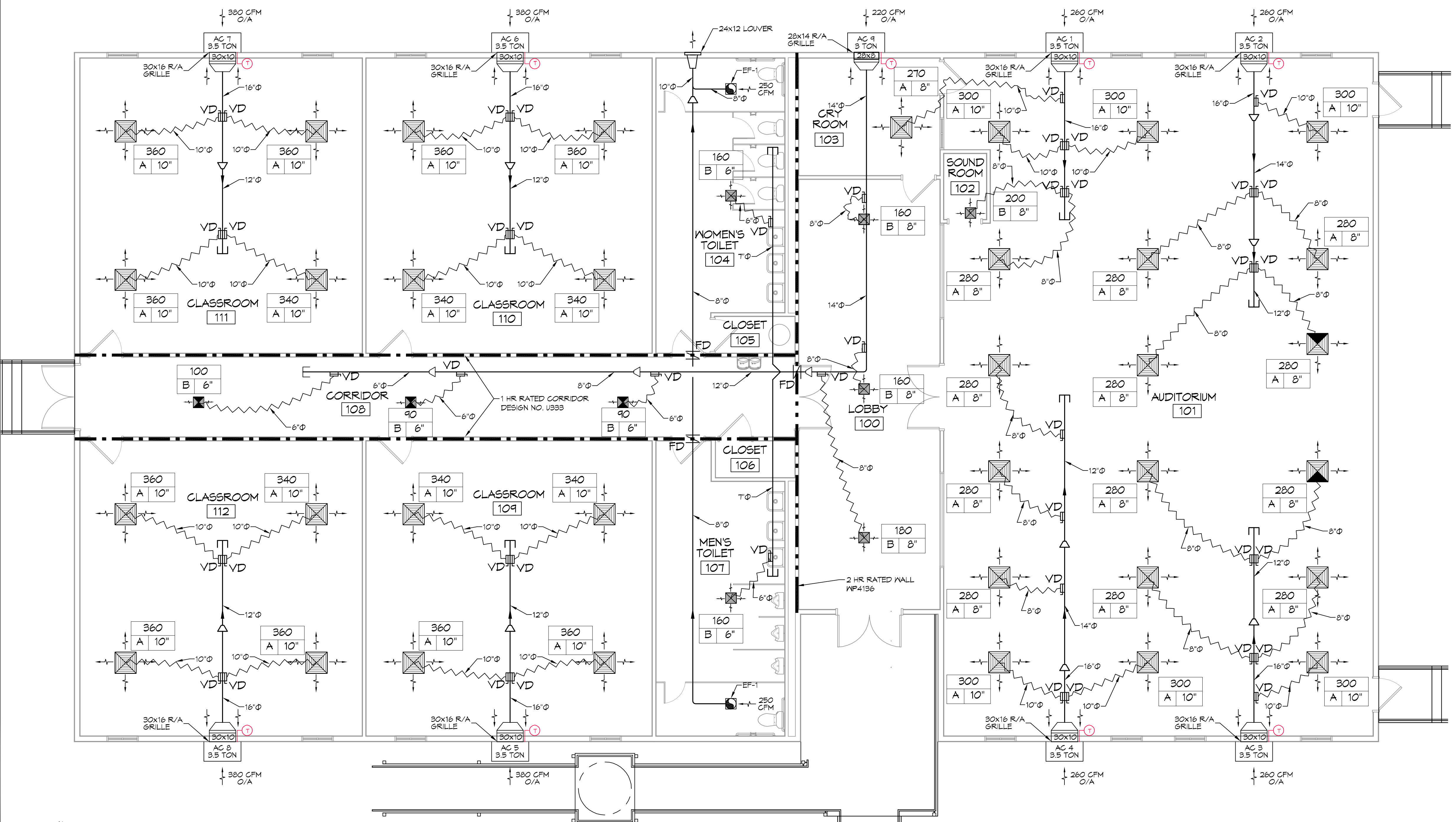
- ### MECHANICAL HVAC NOTES
- ALL WALL MOUNTED AHU'S UNITS ARE EXISTING AND ARE TO BE RE-USED WITH NEW DUCTWORK. ALL NEW DUCTWORK IS DRAWN DIAGRAMMATICALLY AND SHALL BE FIELD VERIFIED PRIOR TO CONSTRUCTION AND INSTALLATION.
 - CONCEALED DUCTWORK TO BE GALVANIZED SHEET METAL LINED WITH FIBROUS GLASS DUCT LINER, MIN R-6. INSTALLED PER SMACNA STANDARDS.
 - EXPOSED DUCTWORK TO BE GALVANIZED SHEET METAL LINED WITH FIBROUS GLASS DUCT LINER, MIN R-6. INSTALLED PER SMACNA STANDARDS.
 - ROUND FLEXIBLE DUCT TO BE UL-181, CLASS 1, AIR DUCT MATERIALS.
 - DUCT SIZES SHOWN ARE CLEAR INSIDE DIMENSIONS.
 - IN ALL SYSTEMS OVER 2000 CFM AND LESS THAN 15,000 CFM, SMOKE DETECTORS SHALL BE INSTALLED IN ACCORDANCE WITH NFPA 72E IN THE RETURN DUCT DOWNSTREAM OF THE AIR HANDLING UNIT AND ALL FILTERS TO AUTOMATICALLY STOP THE FAN.
 - PROVIDE UL LISTED 125 F° FIRESTAT IN RETURN AIR OF EACH SYSTEM UNDER 2000 CFM TO SHUT DOWN THE FAN IN THE EVENT OF FIRE.
 - PROVIDE UL RATED FIRE DAMPERS WHERE REQUIRED AT ALL DUCT PENETRATIONS OF FIRE-RATED ASSEMBLIES AND WHERE REQUIRED BY CODE, INCLUDING OUTSIDE AIR INTAKES AND EXHAUST FANS.
 - CONDENSATE DRAINS TO BE PVC PIPE RUN TO PLUMBERS P-TRAP WITHIN FIVE FEET OF AIR HANDLING UNITS.
 - ALL FRESH AIR SHALL BE TO BE AUTOMATIC CHANGE-OVER WITH HEAT SWITCH.
 - ALL RESTROOM EXHAUST FAN(S) SHALL BE CONTROLLED BY A SWITCH ON THE WALL IN THE SAME LOCATION AS LIGHT SWITCH(S). PROVIDE BACK DRAFT DAMPER.
 - ALL SUPPLY AIR VENTS SHALL BE EQUIPPED WITH AIR CONTROL DAMPERS AT THE REGISTER.
 - FRESH AIR SHALL BE SUPPLIED TO EACH AIR HANDLER THROUGH EXTERIOR WALL DUCT SUPPLIED WITH A CONTROL DAMPER.
 - ALL ELECTRICAL, MECHANICAL, AND PLUMBING PENETRATING FIRE WALLS SHALL BE FIRE CAULKED. (PENETRATIONS THROUGH RATED CONSTRUCTION SHALL BE SEALED WITH A MATERIAL CAPABLE OF PREVENTING THE PASSAGE OF FLAMES AND HOT GASES WHEN TESTED IN ACCORDANCE WITH ASTM-E8-14).
 - ALL MECHANICAL SYMBOLS ARE DRAWN DIAGRAMMATICALLY. CONTRACTOR TO VERIFY WITH OWNER LOCATIONS OF VENTS, DAMPERS, REGISTERS, ETC.
 - FLEXIBLE DUCTWORK LENGTH NOT TO EXCEED 12'-0".
 - REFER TO REFLECTED CEILING PLAN FOR FINAL GRILLE AND DIFFUSER LOCATIONS AND COORDINATE AS REQUIRED.
 - FINAL LOCATION OF TEMPERATURE CONTROLS TO BE COORDINATED WITH OWNER AT JOB SITE.
 - PROVIDE AND INSTALL SMOKE DETECTORS AS APPROVED BY LOCAL AHJ'S. PLACE NEAR R/A AND S/A OPENINGS OF AHU AND PROVIDE, WITH ACCESS PANEL, WIRING BY ELECTRICAL CONTRACTOR, IF REQUIRED.
 - FRESH AIR INTAKES ARE REQUIRED TO HAVE MOTORIZED OR GRAVITY DAMPERS TO SHUT OFF WHEN SYSTEM IS NOT RUNNING.
 - PROVIDE BIRD SCREENS AT ALL EXTERIOR MECHANICAL PENETRATIONS.
 - CONTRACTOR SHALL PROVIDE A MEANS FOR ATTIC VENTILATION FOR THE MOVEMENT OF AIR ABOVE DROP CEILING(S) EITHER BY MECHANICAL VENTS OR POWER VENTS.

DAMMON ENGINEERING, INC.

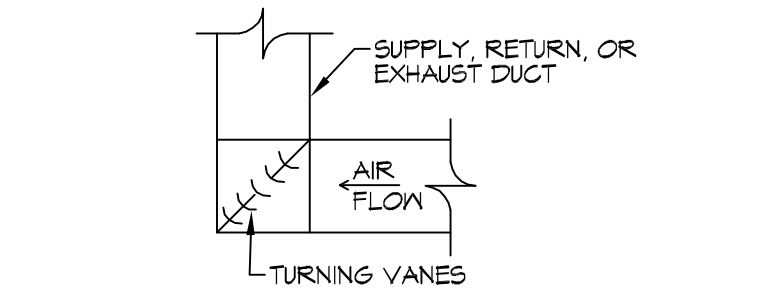
LOUISIANA & MISSISSIPPI

Chief Engineer: Brian A. Mistic, PE
594 Old Spanish Trail
Bossier, LA 70608
www.dammonengineering.com
info@dammonengineering.com
Phone: 985.949.2332, Fax: 985.949.1293

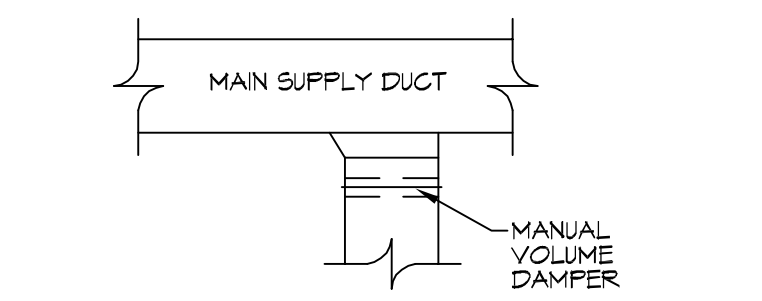
REVISIONS	DATE



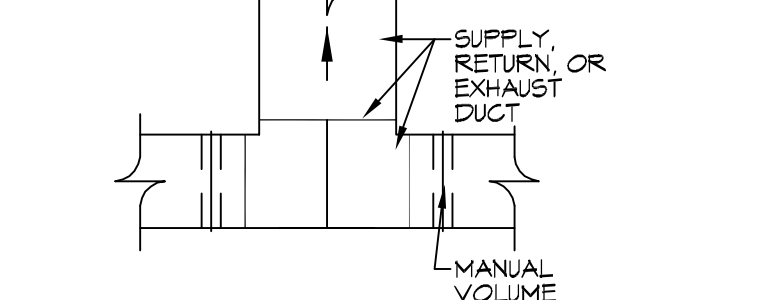
1 MECHANICAL PLAN
SCALE: 3/16"=1'-0"



3 DETAIL
SCALE: 1/4"=1'-0"
HARD DUCT ELBOW



4 DETAIL
SCALE: 1/4"=1'-0"
HARD DUCT BRANCH



5 DETAIL
SCALE: 1/4"=1'-0"
HARD DUCT SPLIT

THE CROSSINGS

64452 HIGHWAY 41,
PEARL RIVER, LA 70452
JOB No: 2584 DATE: 11/05/2018
DRAWN BY: RLD CHECKED BY: CND

SHEET TITLE:
MECHANICAL PLAN

DRAWING NUMBER:
M101

SHEET No: 10 of 13

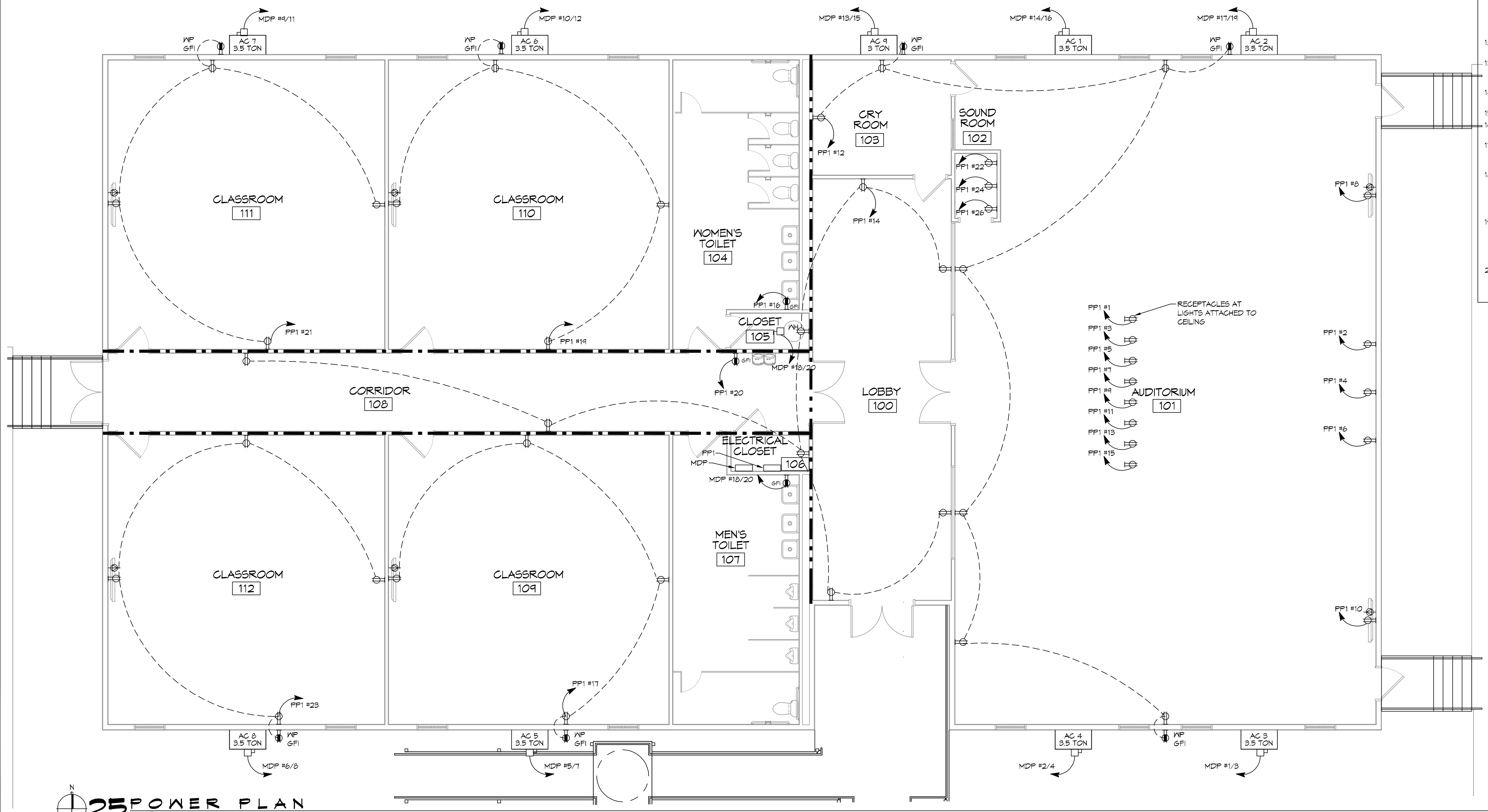
FILE NAME: A:\Projects\2509 - The Crossing\2509 - The Crossing\2509 - The Crossing - Power Plan.dwg PLOT DATE: 11/05/2015 11:27:20

LEGEND

SYMB	DESCRIPTION
	STANDARD 120V DUPLEX RECEPTACLE, NEMA 5-2 OR 18" AFF (UNLESS OTHERWISE NOTED)
	STANDARD 120V DUPLEX RECEPTACLE, ABOVE COUNTER HT.
	SINGLE-POLE DEDICATED RECEPTACLE - REFER TO PANEL SCHEDULE FOR CIRCUIT SIZE
	GFCI DUPLEX RECEPTACLE
	GFCI QUAD RECEPTACLE
	220V ELECTRIC DRYER RECEPTACLE - MOUNTED AT 30" AFF
	220V DEDICATED GFCI RECEPTACLE
	WEATHER-PROOF GFCI DUPLEX RECEPTACLE MOUNTED AT 30" AFF (UNLESS OTHERWISE NOTED)
	STANDARD 120V DUPLEX RECEPTACLE - FLOOR OR CLG. MOUNTED
	STANDARD QUAD RECEPTACLE - WALL-MOUNTED
	STANDARD QUAD RECEPTACLE - FLOOR MOUNTED
	125V 15 AMP DUPLEX-USB 5VDC 3 AMP HUBBELL USB CHARGER RECEPTACLE
	125V 15 AMP QUADPLEX-USB 5VDC 3 AMP HUBBELL USB CHARGER RECEPTACLE
	JUNCTION BOX
	GENERATOR BATTERY CHARGER
	2-BUTTON PUSH BUTTON STATION
	COAX-CABLE CONNECTION FOR TELEVISION
	WALL MOUNTED DATA OUTLET
	FLOOR DATA OUTLET
	POWER DISCONNECT
	WATER HEATER ON DECK OR MEZZANINE ABOVE - SIZE AS NOTED ON PLAN
	EXHAUST FAN - SEE MECH.

NOTES:
 1. CONNECT ALL EMERGENCY/EXIT LIGHT FIXTURES TO NEAREST CONSTANT POWER SOURCE.

- ### GENERAL POWER NOTES
- ALL WORK SHALL CONFORM TO THE LATEST EDITION OF THE NATIONAL ELECTRICAL CODE, THE GOVERNING ELECTRICAL CODE AND ALL OTHER INSPECTION DEPARTMENTS HAVING JURISDICTION. OBTAIN CERTIFICATES OR APPROVAL WHERE REQUIRED. ELECTRICAL CONTRACTOR SHALL VERIFY ALL WIRE AND CONDUIT SIZES FOR MECHANICAL EQUIPMENT TO BE INSTALLED.
 - ALL MATERIALS FURNISHED SHALL BE NEW AND SHALL BE U.L. LISTED.
 - THE DRAWINGS INDICATE SIZE AND GENERAL LOCATION OF WORK. SCALE DIMENSIONS SHALL NOT BE USED. THE EXACT LOCATION OF ALL LIGHTING FIXTURES, RECEPTACLES AND TELEPHONE OUTLETS, ETC. SHALL BE DETERMINED BY ACTUAL CONDITIONS IN THE FIELD.
 - PRIOR TO BIDDING, CONTRACTOR SHALL VISIT THE JOB SITE AND FAMILIARIZE THEMSELVES WITH THE EXISTING CONDITIONS.
 - ELECTRICAL CONTRACTOR SHALL COORDINATE HIS WORK WITH OTHER TRADES AND WITH OTHER CONTRACTORS WHOSE WORK MAY AFFECT THIS INSTALLATION.
 - ELECTRICAL CONTRACTOR SHALL COORDINATE INCOMING ELECTRICAL SERVICE WITH UTILITY COMPANY AND INCLUDE IN HIS BID ALL CHARGES AND FEES INCURRED IN MODIFICATIONS.
 - ELECTRICAL CONTRACTOR SHALL COORDINATE THE TELEPHONE INSTALLATION WITH THE TELEPHONE COMPANY AND THE GENERAL CONTRACTOR.
 - WHERE MORE THAN ONE SWITCH OCCURS IN THE SAME LOCATION, THEY SHALL BE INSTALLED IN A GANG TYPE BOX UNDER ONE COVER PLATE.
 - ELECTRICAL CONTRACTOR, BEFORE INSTALLING ANY OF THE WORK, SHALL SEE THAT IT DOES NOT INTERFERE WITH CLEARANCES REQUIRED FOR FINISHED COLUMNS, HUNG CEILINGS, PLASTER, PARTITIONS, WALLS, ETC. AS SHOWN IN THE ARCHITECTURAL DRAWINGS AND DETAILS. IF ANY WORK IS INSTALLED AND IT LATER DEVELOPS THAT SUCH DETAILS OR DESIGN CANNOT BE FOLLOWED, THE CONTRACTOR, AT HIS OWN EXPENSE, SHALL MAKE SUCH CHANGES IN THE WORK AS DIRECTED BY THE ARCHITECT, AS WELL AS TO PERMIT THE INSTALLATION OF THE ARCHITECTURAL WORK AS SHOWN ON THE PLANS AND DETAILS.
 - PERFORM TEST REQUIRED BY THE OWNER OR THE ENGINEER IN CONNECTION WITH THE OPERATION OF THE ELECTRICAL SYSTEM IN THE BUILDING. ALL TESTS SHALL BE MADE IN ACCORDANCE WITH THE LATEST STANDARD OF THE IEEE AND THE NATIONAL ELECTRICAL CODE.
 - MINIMUM CONDUCTOR SIZE SHALL BE #12, 600V INSULATION. MINIMUM SIZE CONDUIT SHALL BE 3/4" ELECTRICAL METALLIC TUBING (EMT) FOR INTERIOR USE, AND 3/4" RIGID ALUMINUM FOR EXTERIOR USE. USE NON-METALLIC CABLE (NMC) CABLE COPPER, FOR LIGHTS AND RECEPTACLE CIRCUITS IN WOOD FRAME CONSTRUCTION AREAS ONLY; IN STEEL FRAMING AREAS THE USE OF EMT (MINIMUM) IS REQUIRED; EXTERIOR FITTINGS SHALL BE CAST BOXES AND COVERS; INTERIOR FITTINGS SHALL BE STAMPED BOXES.
 - CONTRACTOR SHALL INSTALL WIRING AND OTHER CIRCUIT COMPONENTS TO MATCH EQUIPMENT ACTUALLY INSTALLED.
 - INSTALL GROUND FAULT RECEPTACLES AT RECEPTACLE LOCATIONS WITHIN 5' OF SINKS OR LAVATORIES, AND AT EXTERIOR LOCATIONS. EXTERIOR RECEPTACLES SHALL ALSO BE WATERPROOF.
 - BONDING AND GROUNDING SHALL BE IN ACCORDANCE WITH NFPA 70:250-65, NFFR 250-23, 250-11 & 250-12.
 - GROUND NEUTRAL IN ACCORDANCE WITH NFPA 10:250-23b.
 - FUSES SHALL BE ITT CLASS K5, 250 VOLT, 200,000 AMP INTERRUPTING CAP.
 - PROVIDE SERVICES OF A FIRE/SMOKE DETECTION AND ALARM COMPANY TO DESIGN AND INSTALL ALARM SYSTEM TO MEET REQUIREMENTS OF THE STATE FIRE MARSHALL AND THE FIRE DISTRICT.
 - EXTERIOR LIGHTING SHALL BE SHADED OR INWARDLY DIRECTED IN SUCH A MANNER SO THAT NO DIRECT LIGHTING OR GLARE IS CAST BEYOND THE PROPERTY LINE. THE INTENSITY OF SUCH LIGHTING SHALL NOT EXCEED ONE FOOT CANDLE AS MEASURED AT THE ADJUTING PROPERTY LINE.
 - ALL ELECTRICAL, MECHANICAL AND PLUMBING PENETRATING FIRE PARTITIONS SHALL BE FIRE CAULKED. (PENETRATIONS THROUGH RATED CONSTRUCTION SHALL BE SEALED WITH A MATERIAL CAPABLE OF PREVENTING THE PASSAGE OF FLAMES AND HOT GASES WHEN TESTED IN ACCORDANCE WITH ASTM-E814.)
 - VERIFY ELECTRICAL CONNECTIONS PER MANUFACTURER'S RECOMMENDATIONS.



DAMMON

ENGINEERING, INC.

LOUISIANA & MISSISSIPPI

Chief Engineer: Brian Mitchell, PE
 504 Old Spanish Trail
 Slidell, LA 70458
 www.dammonengineering.com
 info@dammonengineering.com
 PH: 985.649.2342, FX: 985.649.2320

#	DESCRIPTION	DATE



THE CROSSING

JOB No: 2509 | DATE: 11/05/2015
 DRAWN BY: BDM | CHECKED BY: RLD

SHEET TITLE:
POWER PLAN

DRAWING NUMBER:
E101

SHEET No: 11 of 13

25 POWER PLAN
 SCALE: 3/16"=1'-0"

