

PTAC AIR UNIT SCHEDULE													
AIR HANDLER													
TAG	AREA SERVED	BARD MODEL NO.	NOMINAL TONS	TOTAL CFM	OA CFM	COOLING			Motor HP	ESP (WC)	HEAT		REMARKS
						TMBH	EDB	EWB			VAC	PH	
AC-1	Auditorium - 101	WA423-A05M	3.5	1360	260	42	80.1	70.8	1/3	0.4	3.8	208	1 35 1,2,3,4
AC-2	Auditorium - 101	WA423-A05M	3.5	1420	260	42	80.1	70.8	1/3	0.3	3.8	208	1 35 1,2,3,4
AC-3	Auditorium - 101	WA423-A05M	3.5	1420	260	42	80.1	70.8	1/3	0.3	3.8	208	1 35 1,2,3,4
AC-4	Auditorium - 101	WA423-A05M	3.5	1440	260	42	80.1	70.8	1/3	0.3	3.8	208	1 35 1,2,3,4
AC-5	Classroom 109	WA423-A05M	3.5	1400	380	42	83.6	72.5	1/3	0.3	3.8	208	1 35 1,2,3,4
AC-6	Classroom 110	WA423-A05M	3.5	1400	380	42	83.6	72.5	1/3	0.3	3.8	208	1 35 1,2,3,4
AC-7	Classroom 111	WA423-A05M	3.5	1420	380	42	83.6	72.5	1/3	0.3	3.8	208	1 35 1,2,3,4
AC-8	Classroom 112	WA423-A05M	3.5	1420	380	42	83.6	72.5	1/3	0.3	3.8	208	1 35 1,2,3,4
AC-9	Lobby & Corridor	WA372-A05M	3	1100	220	36	80.5	69.7	1/3	0.3	3.8	208	1 32 1,2,3,4

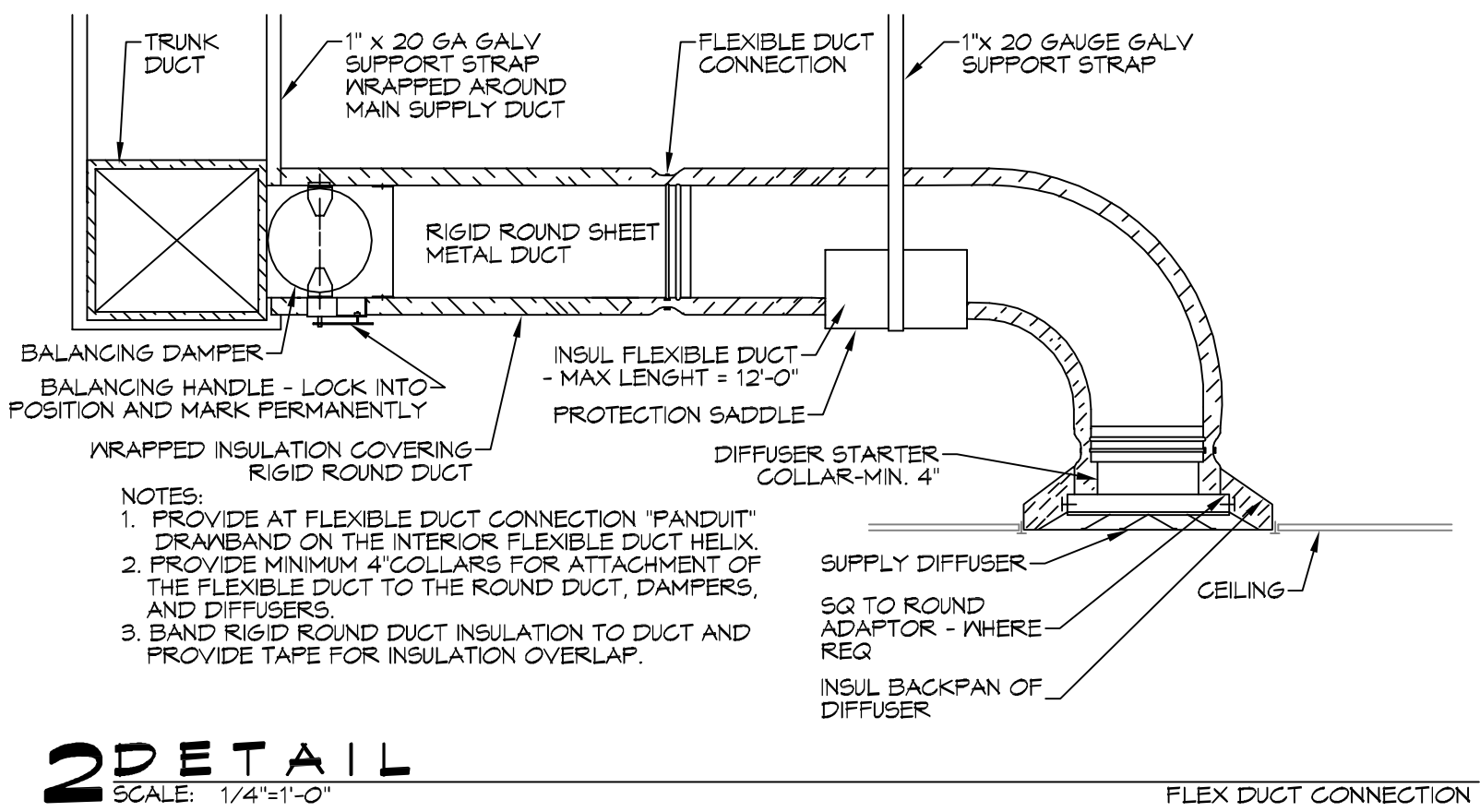
- NOTES:
- Provide washable filter media, single point power connection, crankcase heat, time delay relay & programmable 7/24 thermostat with lockable cover.
 - Cooling capacities to be rated in accordance with AHRI standard 210/290 for ASHRAE standard design weather conditions in New Orleans, LA.
 - Install units in accordance with manufacturer's recommendations.
 - Coordinate with Architect / Owner for colors and finishes.

DIFFUSER SCHEDULE				
Mark No.	Service	Neck Size	Description	
A	Supply Air	Ref. Plan	24"x24" plaque diffuser, Titus "Omni" or equal	
B	Supply Air	Ref. Plan	12"x12" plaque diffuser, Titus "Omni" or equal	

1. Coordinate with Architect / Owner for colors and finish.

Exhaust Fan Schedule							
Tag	Fan	Power			Make / Model	Remarks	
	Airflow (CFM)	TSP (Wc)	Amps	RPM	Volts	Phase	Hz
EF-1	250	0.25	2.1	905	120	1	60
							Broan L250

1. Install per Manufacturer's recommendations.
2. Furnish with grille, speed control and backdraft damper.



2 DETAIL
SCALE: 1/4"=1'-0"

LEGEND

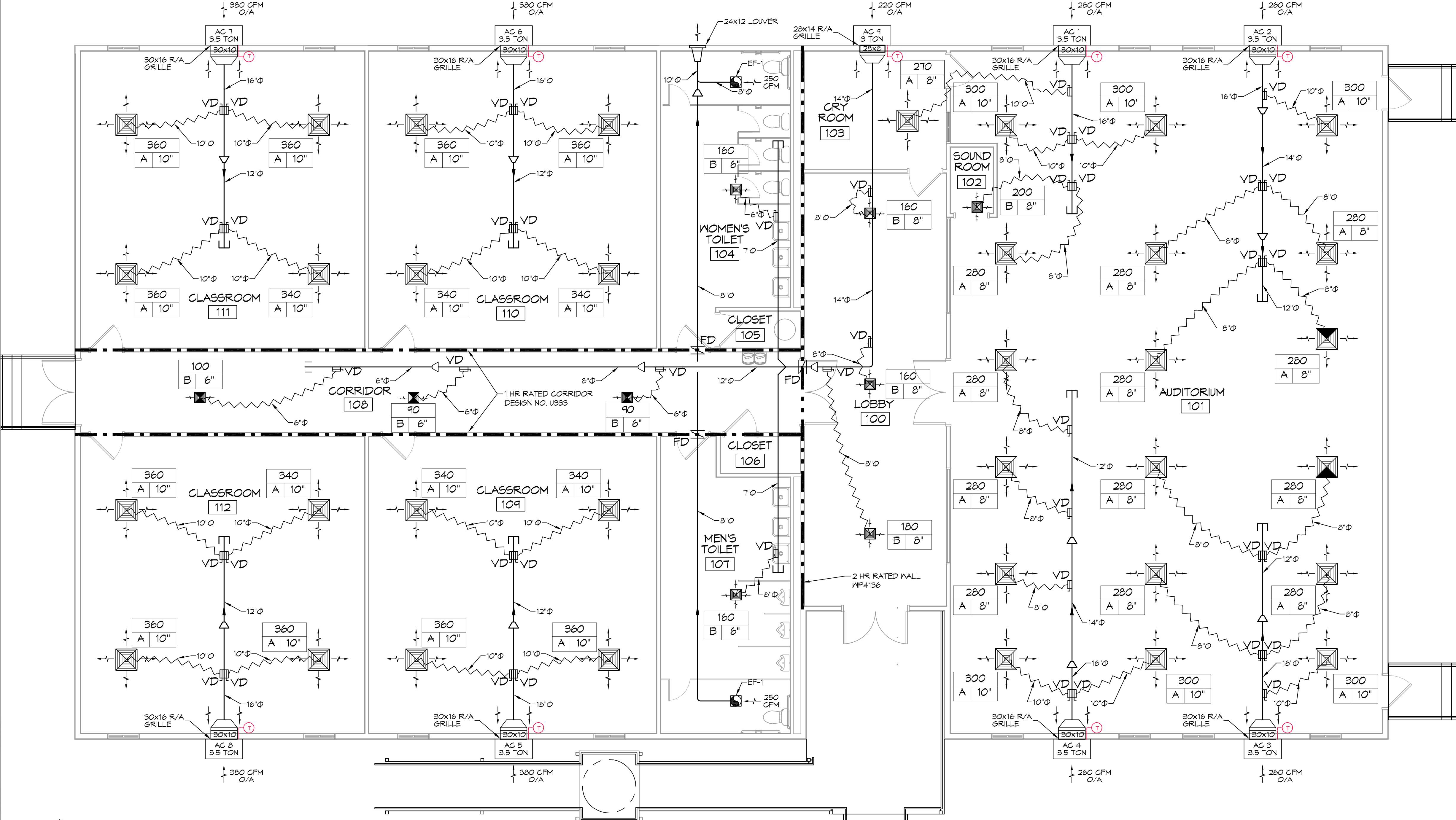
- SUPPLY AIR GRILLE
- TWO-WAY BLOW/DISCHARGE
- EXHAUST FAN
- THERMOSTAT
- SUPPLY AIR DUCT
- DAMPER CONTROL
- FIRE DAMPER
- ROUND FLEX DUCT, MAX LENGTH 12'-0", MIN. R-6, PROVIDE MAN. DAMPER AT DIFFUSER CONNECTIONS, DUCT SIZE AS FOLLOWS:
280 CFM TO 350 CFM = 10"
220 CFM TO 280 CFM = 8"
150 CFM TO 200 CFM = 7"
100 CFM TO 150 CFM = 6"

- MECHANICAL HVAC NOTES**
- ALL WALL MOUNTED AHU'S UNITS ARE EXISTING AND ARE TO BE RE-USED WITH NEW DUCTWORK. ALL NEW DUCTWORK IS DRAWN DIAGRAMMATICALLY AND SHALL BE FIELD VERIFIED PRIOR TO CONSTRUCTION AND INSTALLATION.
 - CONCEALED DUCTWORK TO BE GALVANIZED SHEET METAL LINED WITH FIBROUS GLASS DUCT LINER, MIN R-6. INSTALLED PER SMACNA STANDARDS.
 - EXPOSED DUCTWORK TO BE GALVANIZED SHEET METAL LINED WITH FIBROUS GLASS DUCT LINER, MIN R-6. INSTALLED PER SMACNA STANDARDS.
 - ROUND FLEXIBLE DUCT TO BE UL-181, CLASS 1, AIR DUCT MATERIALS.
 - DUCT SIZES SHOWN ARE CLEAR INSIDE DIMENSIONS.
 - IN ALL SYSTEMS OVER 2000 CFM AND LESS THAN 15,000 CFM, SMOKE DETECTORS SHALL BE INSTALLED IN ACCORDANCE WITH NFPA 72E IN THE RETURN DUCT DOWNSTREAM OF THE AIR HANDLING UNIT AND ALL FILTERS TO AUTOMATICALLY STOP THE FAN.
 - PROVIDE UL LISTED 125 F° FIRESTAT IN RETURN AIR OF EACH SYSTEM UNDER 2000 CFM TO SHUT DOWN THE FAN IN THE EVENT OF FIRE.
 - PROVIDE UL RATED FIRE DAMPERS WHERE REQUIRED AT ALL DUCT PENETRATIONS OF FIRE-RATED ASSEMBLIES AND WHERE REQUIRED BY CODE, INCLUDING OUTSIDE AIR INTAKES AND EXHAUST FANS.
 - CONDENSATE DRAINS TO BE PVC PIPE RUN TO PLUMBERS P-TRAP WITHIN FIVE FEET OF AIR HANDLING UNITS.
 - ALL FRESH AIR SHALL BE TO BE AUTOMATIC CHANGE-OVER WITH HEAT SWITCH.
 - ALL RESTROOM EXHAUST FAN(S) SHALL BE CONTROLLED BY A SWITCH ON THE WALL IN THE SAME LOCATION AS LIGHT SWITCH(S). PROVIDE BACK DRAFT DAMPER.
 - ALL SUPPLY AIR VENTS SHALL BE EQUIPPED WITH AIR CONTROL DAMPERS AT THE REGISTER.
 - FRESH AIR SHALL BE SUPPLIED TO EACH AIR HANDLER THROUGH EXTERIOR WALL DUCT SUPPLIED WITH A CONTROL DAMPER.
 - ALL ELECTRICAL, MECHANICAL, AND PLUMBING PENETRATING FIRE WALLS SHALL BE FIRE CAULKED. (PENETRATIONS THROUGH RATED CONSTRUCTION SHALL BE SEALED WITH A MATERIAL CAPABLE OF PREVENTING THE PASSAGE OF FLAMES AND HOT GASES WHEN TESTED IN ACCORDANCE WITH ASTM-E8-14).
 - ALL MECHANICAL SYMBOLS ARE DRAWN DIAGRAMMATICALLY. CONTRACTOR TO VERIFY WITH OWNER LOCATIONS OF VENTS, DAMPERS, REGISTERS, ETC.
 - FLEXIBLE DUCTWORK LENGTH NOT TO EXCEED 12'-0".
 - REFER TO REFLECTED CEILING PLAN FOR FINAL GRILLE AND DIFFUSER LOCATIONS AND COORDINATE AS REQUIRED.
 - FINAL LOCATION OF TEMPERATURE CONTROLS TO BE COORDINATED WITH OWNER AT JOB SITE.
 - PROVIDE AND INSTALL SMOKE DETECTORS AS APPROVED BY LOCAL AHJ'S. PLACE NEAR R/A AND S/A OPENINGS OF AHU AND PROVIDE, WITH ACCESS PANEL, WIRING BY ELECTRICAL CONTRACTOR, IF REQUIRED.
 - FRESH AIR INTAKES ARE REQUIRED TO HAVE MOTORIZED OR GRAVITY DAMPERS TO SHUT OFF WHEN SYSTEM IS NOT RUNNING.
 - PROVIDE BIRD SCREENS AT ALL EXTERIOR MECHANICAL PENETRATIONS.
 - CONTRACTOR SHALL PROVIDE A MEANS FOR ATTIC VENTILATION FOR THE MOVEMENT OF AIR ABOVE DROP CEILING(S) EITHER BY MECHANICAL VENTS OR POWER VENTS.

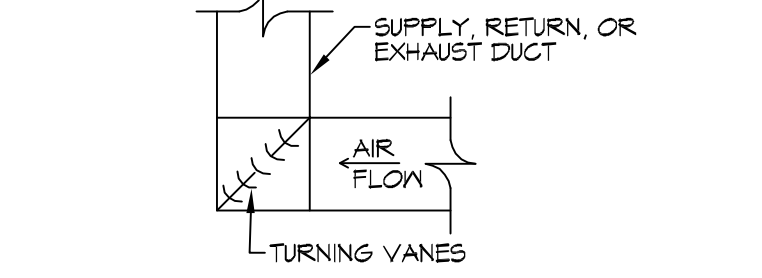
DAMMON ENGINEERING, INC.
LOUISIANA & MISSISSIPPI

Chief Engineer: Brian A. Mistic, PE
594 Old Spanish Trail
Bossier, LA 70608
www.dammonengineering.com
info@dammonengineering.com
PH: 781.949.2332, FX: 781.949.1293

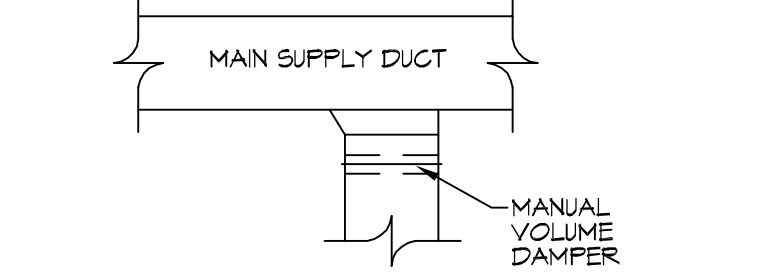
REVISIONS	DATE



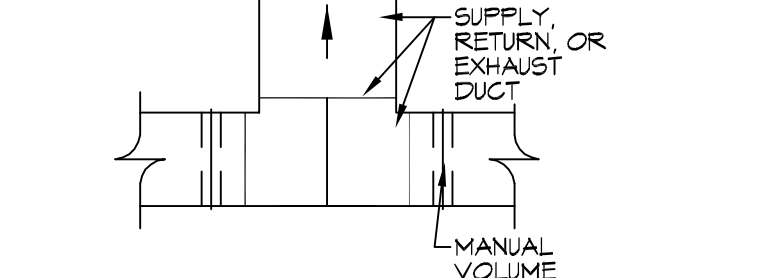
1 MECHANICAL PLAN
SCALE: 3/16"=1'-0"



3 DETAIL
SCALE: 1/4"=1'-0"
HARD DUCT ELBOW



4 DETAIL
SCALE: 1/4"=1'-0"
HARD DUCT BRANCH



5 DETAIL
SCALE: 1/4"=1'-0"
HARD DUCT SPLIT

THE CROSSINGS

64452 HIGHWAY 41,
PEARL RIVER, LA 70452
JOB No: 2584 DATE: 11/05/2018
DRAWN BY: RLD CHECKED BY: CND

SHEET TITLE:
MECHANICAL PLAN

DRAWING NUMBER:
M101

SHEET No: 10 of 13