

FILE NAME: S:\Projects\2022\220401\220401.dwg
 PROJECT: NEW VOTIVE CHAPEL OF OUR LADIES OF LOURDES
 DATE: 04-06-2022
 TIME: 10:45:58 AM
 USER: B.M.
 PLOT: 220401.dwg

GENERAL FOUNDATION NOTES

- ALL DIMENSIONS ARE EDGE OF CONCRETE (EOC) TO EDGE OF CONCRETE (EOC) UNLESS NOTED OTHERWISE.
- VERIFY ALL PLUMBING ROUGH-IN LOCATIONS AND DOUBLE UP ON FLOOR JOIST IN THOSE AREAS.
- CONCRETE MIX SHALL HAVE A MINIMUM COMPRESSIVE STRENGTH OF 4000 PSI AT 28 DAYS. CONCRETE MIX SHALL BE IN ACCORDANCE WITH ACI-318.
- ALL CONVENTIONAL REINFORCING STEEL SHALL MEET ASTM-A615 (GRADE 60).
- ONE LAYER OF POLYETHYLENE VAPOR BARRIER SHALL BE PLACED UNDER ALL CONCRETE. VAPOR RETARDER TO BE MINIMUM 10 MIL THICKNESS, ASTM E 1745 CLASS A, PERMEANCE LESS THAN 0.01 PERMS, EQUAL TO STEGO INDUSTRIES STEGO WRAP, ECOSHIELD-E 15 MIL BY EPRO, OR IRONBAR 15 BY FLATIRON FILMS. PROVIDE APPROPRIATE ACCESSORIES FOR A COMPLETE SYSTEM.
- ALL REINFORCING STEEL AND MESH SHALL BE SECURELY SUPPORTED TO PREVENT BOTH VERTICAL AND HORIZONTAL MOVEMENT DURING CONCRETE PLACEMENT.
- THE CONTRACTOR SHALL VERIFY ALL DROPS, OFFSETS, BRICK LEDGES, DIMENSIONS AND CONFIGURATIONS.
- GRADE BEAM DIMENSIONS MAY VARY BY $\pm 5\%$, $\pm 20\%$.
- FILL, AS A MINIMUM QUALITY, SHALL BE 40% CLAY AND 60% SANDY MIXTURE, PLACED IN 6" LIFTS AND COMPACTED TO A MINIMUM OF 95% STANDARD PROCTOR. FOOTINGS ARE DESIGNED TO USE SOIL WITH A BEARING CAPACITY OF 2000 LBS. PER SQUARE FOOT OR MORE. IT IS RECOMMENDED THAT THE OWNER VERIFY ALLOWABLE SOIL BEARING CAPACITY BY CONTRACTING THE SERVICES OF A SOILS ENGINEERING COMPANY.
- ALL SOIL BELOW SLAB SHALL RECEIVE TERMITE TREATMENT.

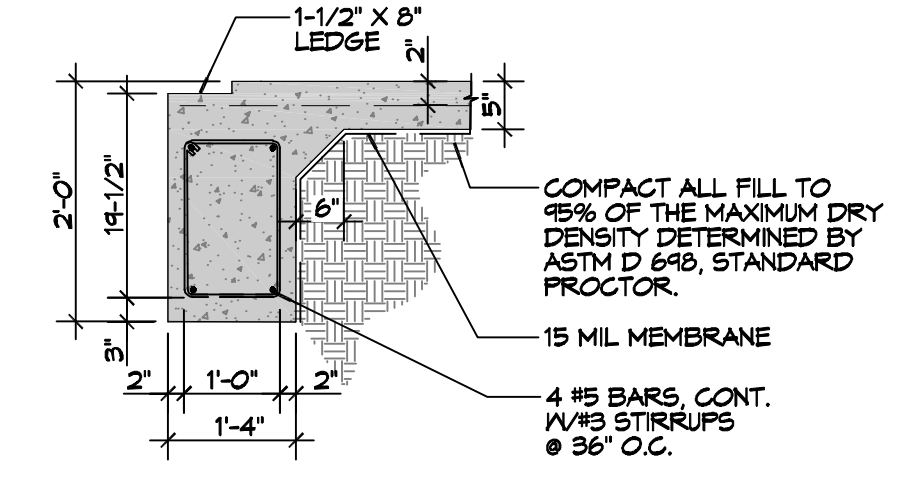
DAMMON ENGINEERING, INC.
 LOUISIANA & MISSISSIPPI
 Chief Engineer: Brian Mistich, PE
 554 Old Spanish Trail
 Slidell, LA 70458
 www.dammonengineering.com
 info@dammonengineering.com
 PH: 985.649.8832

DO NOT PLACE SPLICE(S) WITHIN 3 FEET OF STRUCT COLUMNS

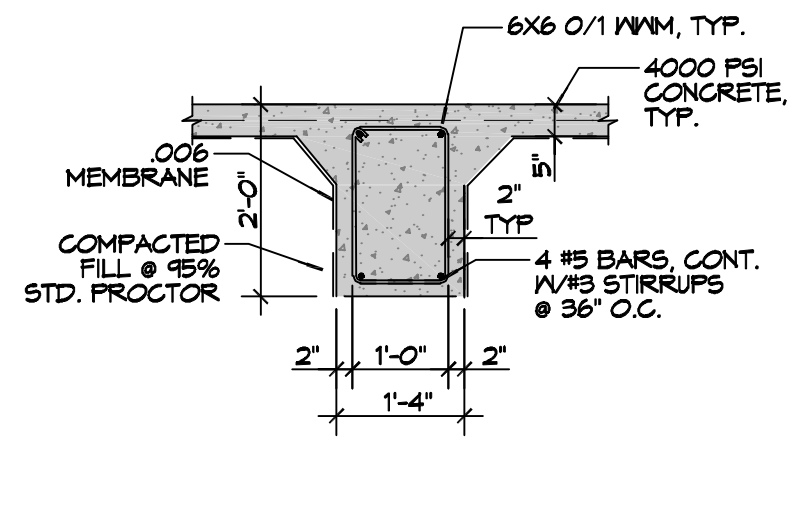
TIE WIRE AROUND SPLICED MEMBERS AT 6" O.C. AND WITHIN 3" OF END(S)



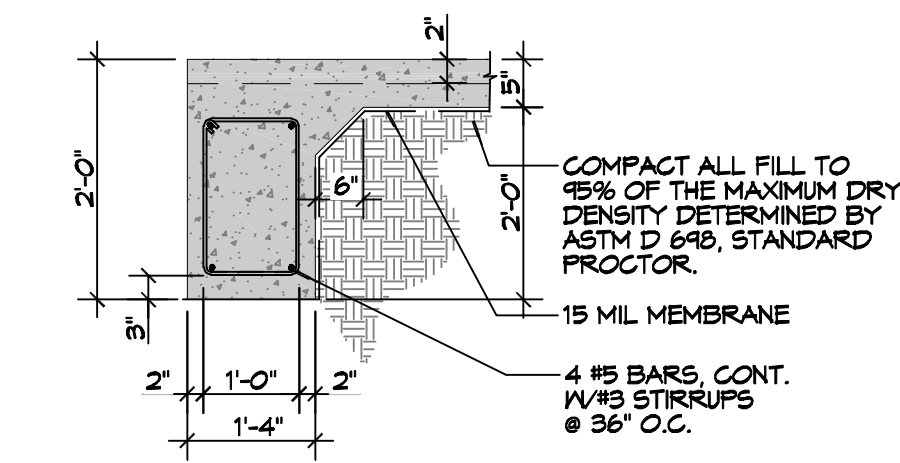
1 DETAIL
 S101|S101 SCALE: 1/2" = 1'-0"



A SECTION
 S101|S101 SCALE: 1/2" = 1'-0"



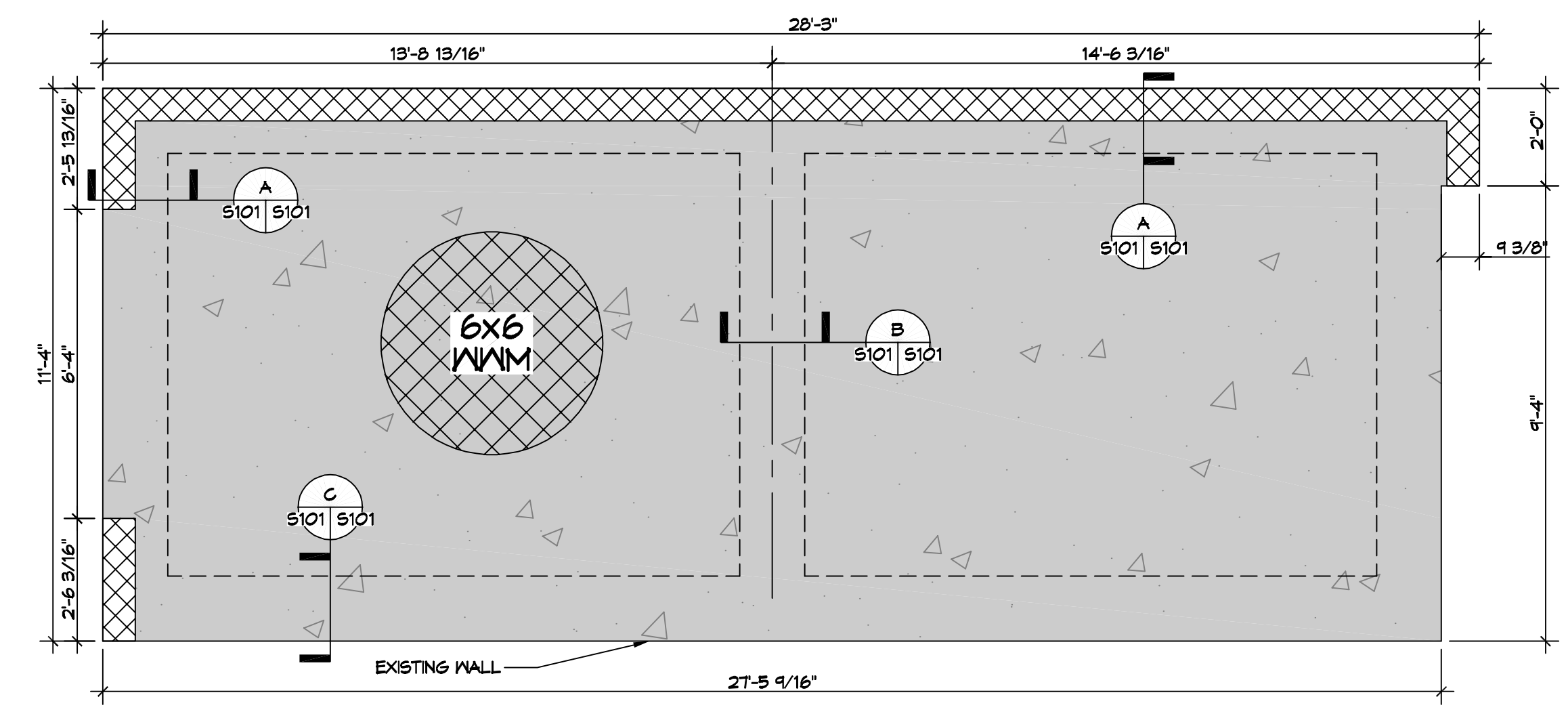
B SECTION
 S101|S101 SCALE: 1/2" = 1'-0"



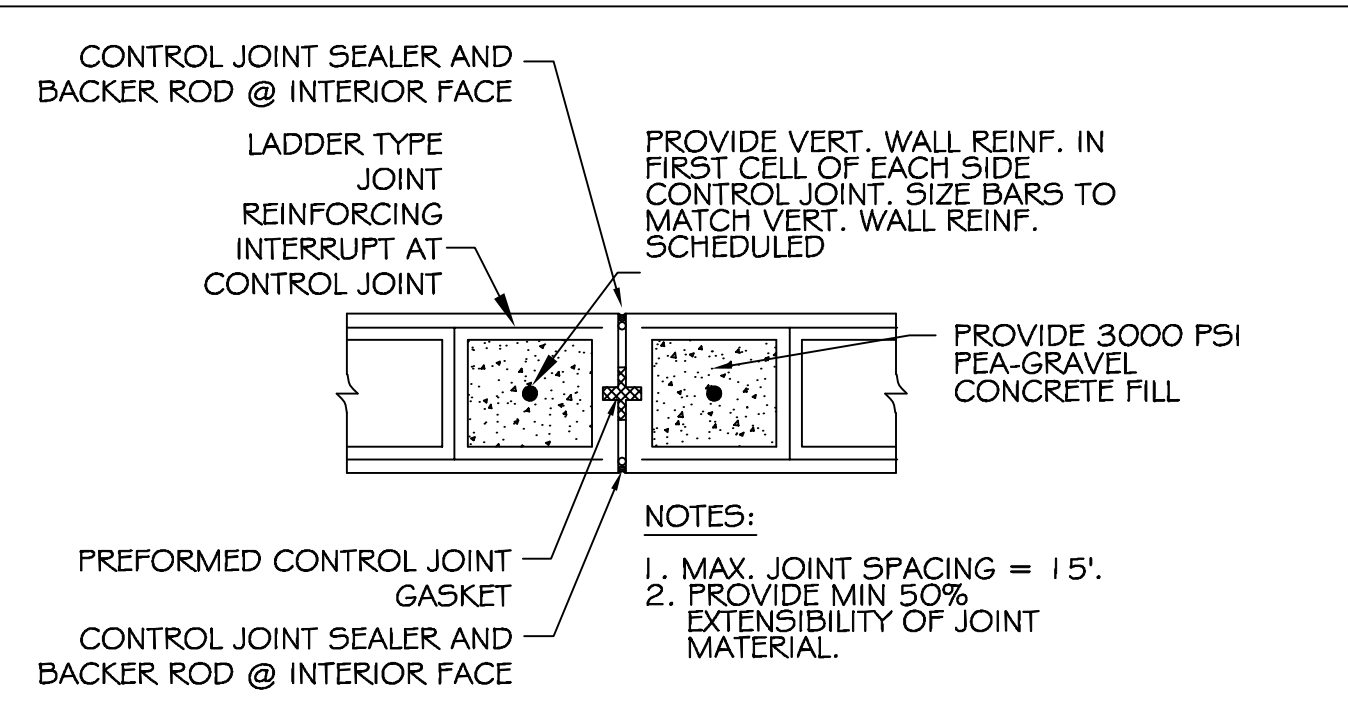
C SECTION
 S101|S101 SCALE: 1/2" = 1'-0"

CMU LINTEL SCHEDULE			
WIDTH (W)	CLEAR SPAN	DEPTH (D)	HORZ. REINF.
8" TYP AT ALL CMU WALLS	UP TO 3'-4"	8"	(1) #6 BOTTOM
	UP TO 6'-4"	16"	(1) #6 T&B
	UP TO 14'-0"	24"	(2) #6 T&B

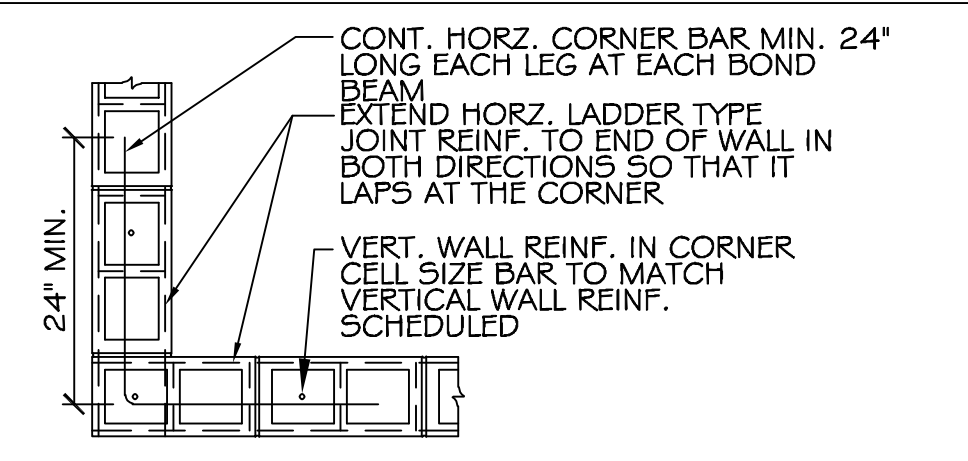
PROVIDE 3000 PSI PEA-GRAVEL CONCRETE FILL FOR ALL LINTELS.



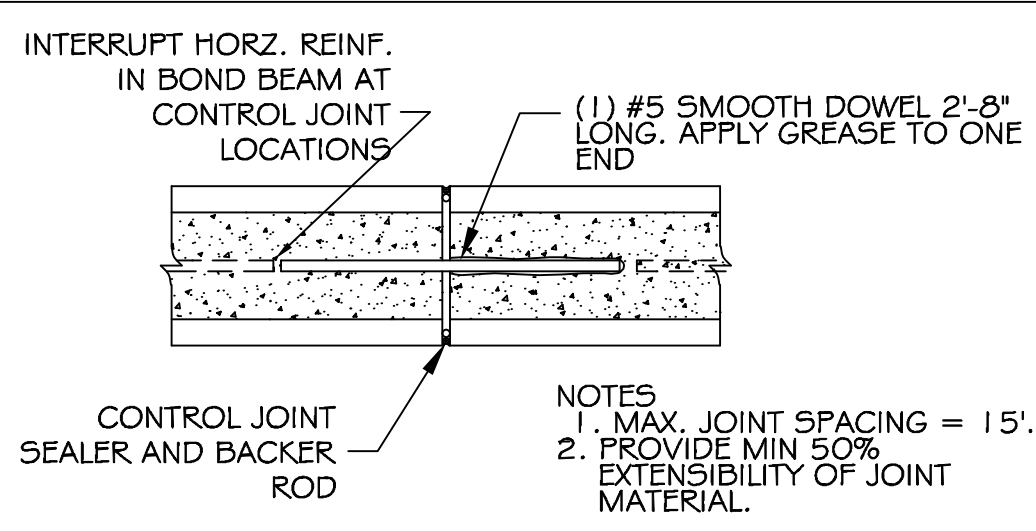
2 FOUNDATION PLAN
 SCALE: 3/8" = 1'-0"



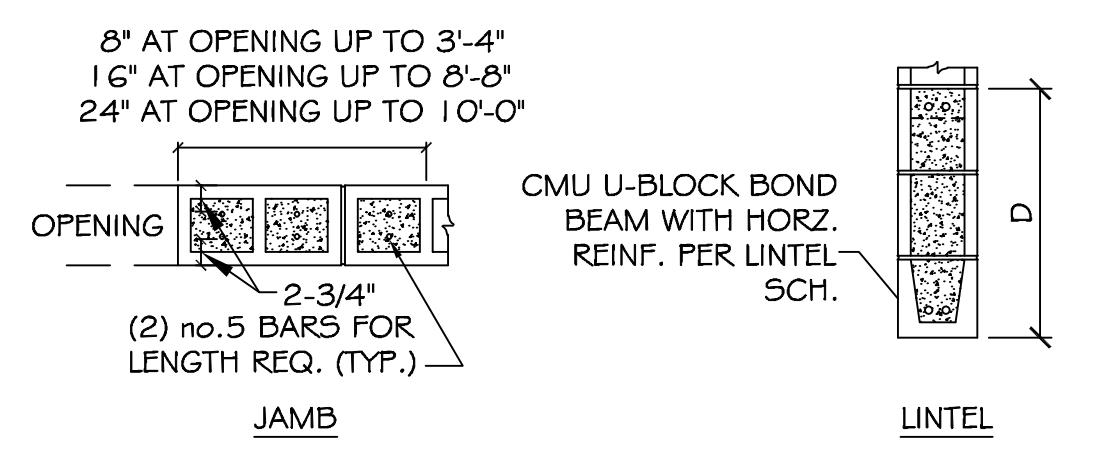
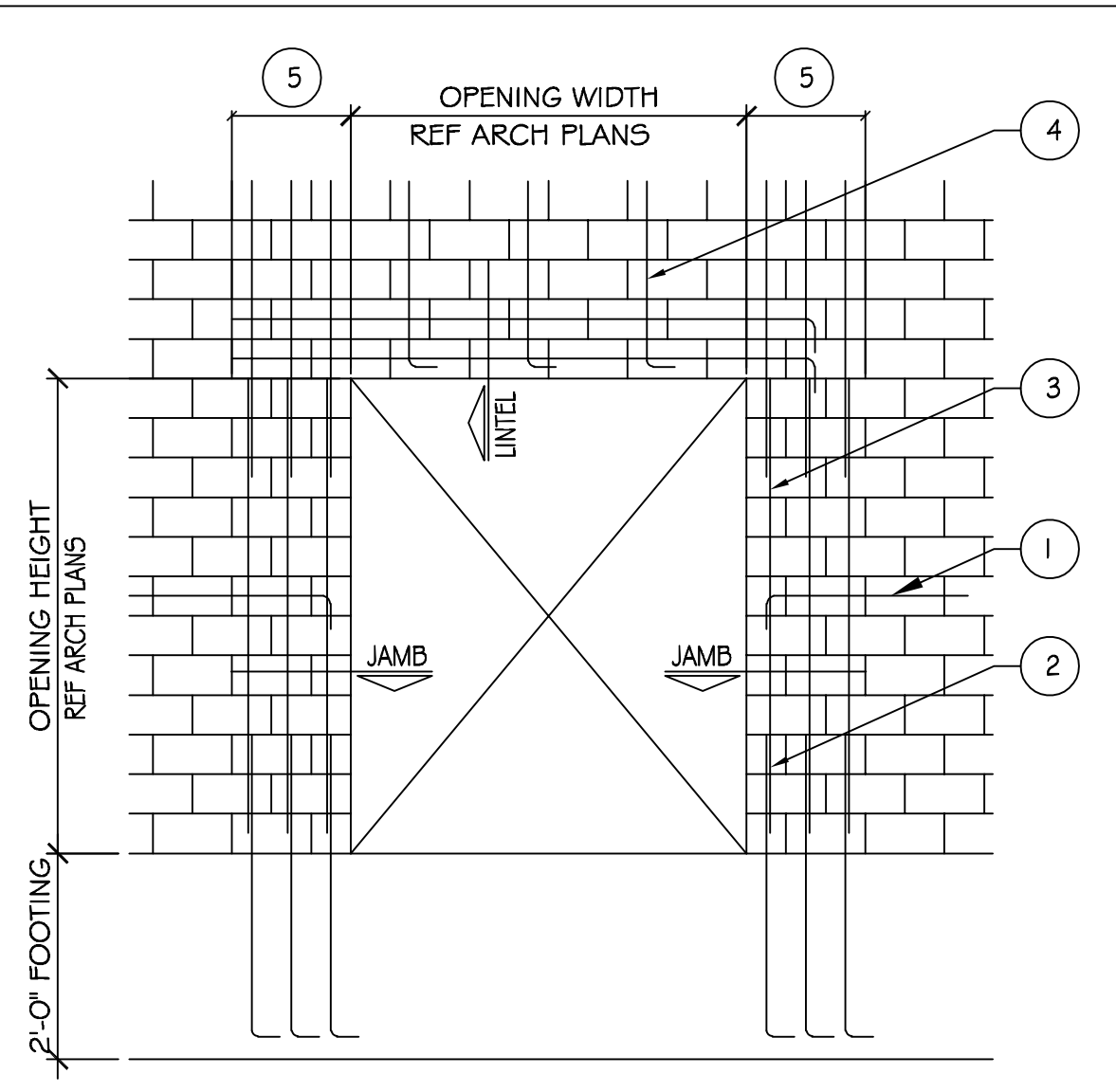
TYPICAL MASONRY CONTROL JOINT
 SCALE: N.T.S.



TYPICAL REINF. @ CORNER OF MASONRY
 SCALE: N.T.S.



CONTROL JOINT @ BOND BEAM
 SCALE: N.T.S.



- NOTES: #
- WHERE HORZ. REINFORCEMENT IS INTERRUPTED BY OPENING OR CONTROL JOINT PROVIDE STANDARD ACI HOOK WITH VERT. WALL REINF. AT END CELL.
 - ALL VERT. BARS AT DOOR JAMBS TO BE FULL HEIGHT.
 - CONTINUE VERT. WALL REINF. OVER OPENING. ANCHOR VERT. REINF. INTO LINTEL BEAM WITH STANDARD ACI HOOK.
 - EXTEND LINTEL A MIN. 2'-0" BEYOND FACE OF OPENING EACH SIDE FOR STRAIGHT LINTEL REINF. AND 1'-0" FOR LINTEL REINF. WITH STANDARD ACI HOOK.

TYPICAL MASONRY WALL OPENING DIAGRAM
 SCALE: N.T.S.

REVISIONS	DATE
# DESCRIPTION	

SEAL:

NEW VOTIVE CHAPEL OF OUR LADIES OF LOURDES

400 WESTCHESTER PLACE
 SLIDELL, LA 70458

JOB No: 2022 DATE: 04-06-2022
 DRAWN BY: CKD CHECKED BY: B.M.

SHEET TITLE:
 FOUNDATION PLAN

DRAWING NUMBER:
S101

SHEET No: 1 of 2

