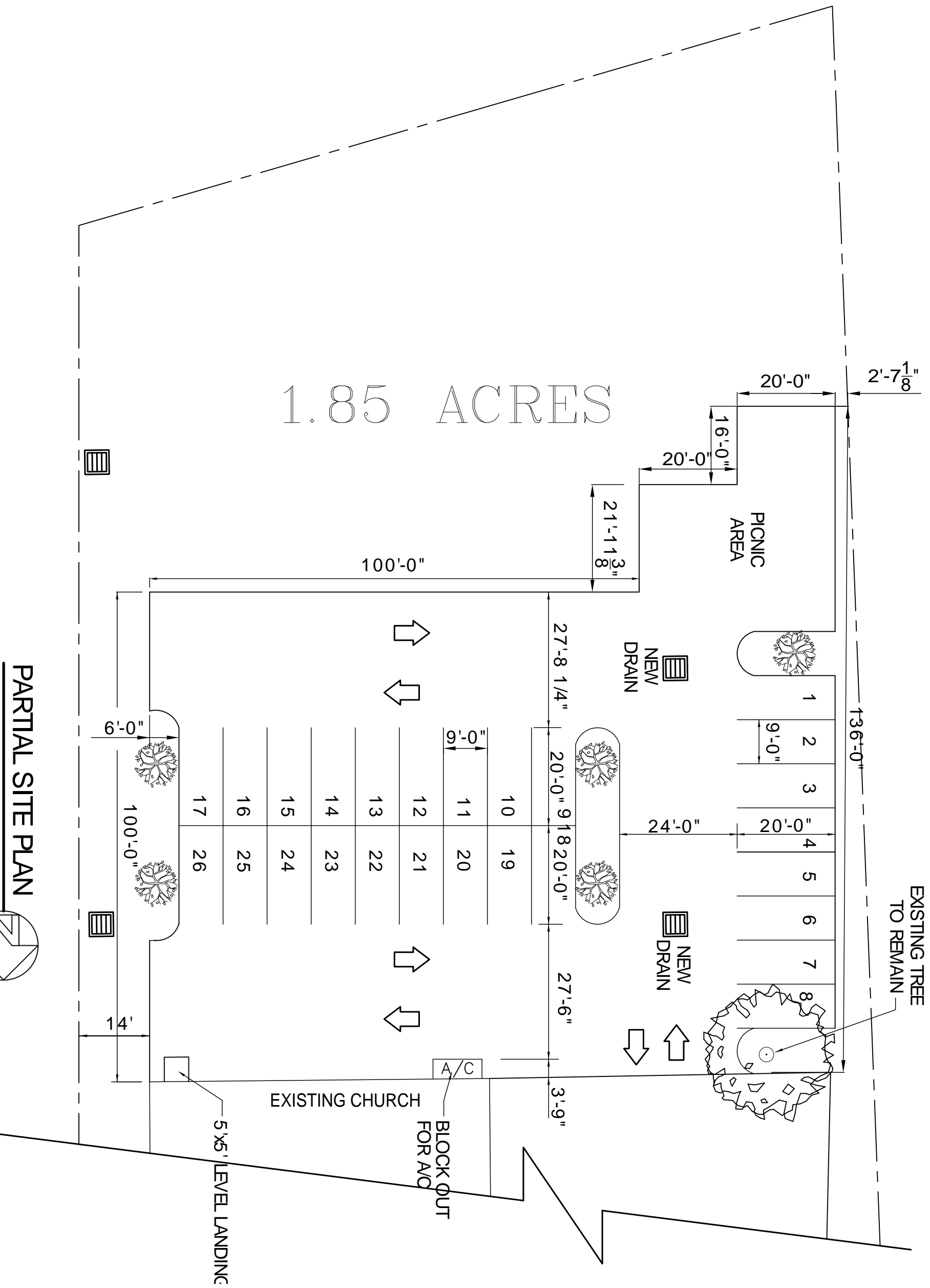


1.85 ACRES



PICNIC AREA

NEW DRAIN

NEW DRAIN

EXISTING TREE TO REMAIN

EXISTING CHURCH

BLOCK OUT FOR A/C

5'x5' LEVEL LANDING

PARTIAL SITE PLAN

SCALE: 1" = 20'



- CYPRESS OR PINE TREE - MINIMUM OF 12' HIGH, CALIPER OF 4"

