

BOW SPAN (SEE DETAIL 1/S2)	MAXIMUM D.C. BOW SPACING
UP TO 24'-0"	5'-0"
26'-0" TO 30'-0"	3'-6"

MAXIMUM POST HEIGHT	POST/BOW GAGE	
	130 MPH MAX. WIND SPEED	150 MPH MAX. WIND SPEED
10'-0"	14 GA	12 GA
12'-0"	12 GA	12 GA

BOW FRAMING TABLES

DRAWING INDEX

- S1 ELEVATION VIEW & NOTES
- S2 BOW FRAME DETAILS
- S3 ANCHORAGE DETAILS
- S4 END WALL ELEVATIONS
- S5 DETAILS
- S6 DETAILS
- S7 DETAILS
- S8 DETAILS
- S9 ROOF/WALL BRACING DETAILS

CUSTOMER: Roger P. Alworth, Eagle Carpports
PROJECT LOCATION: Slidell, Louisiana

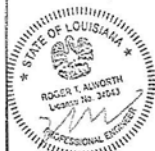
THE DRAWINGS PRESENTED IN THIS PACKAGE ARE INTENDED FOR A SPECIFIC USE FOR THE CLIENT LISTED ABOVE AT THE LOCATION LISTED ABOVE. THESE DRAWINGS SHALL NOT BE REPRODUCED, REUSED, COPIED, FILED, SOLD TO A THIRD PARTY, OR ALTERED IN ANY WAY WITHOUT THE WRITTEN AUTHORIZATION OF VECTOR ENGINEERS, P.C. PLANS ARE ONLY MAX. D IF THIS STAMP AND SIGNATURE OF ENGINEER'S STAMP APPEAR IN RED.



DATE: 1/14/2015 DESIGNED BY: DR/DFE/MP

REVISIONS	
DATE	DESCRIPTION

DESIGNED EXCLUSIVELY FOR
EAGLE CARPORTS
16388 FANCY GAP HIGHWAY
DANA, VA 24317
1-800-579-5559



SEP 1 9 2016

NOTES:

1. DESIGN IS BASED ON THE 2012 INTERNATIONAL BUILDING CODE AND THE ASCE 7-10 STANDARD
2. LOADS:
ROOF SNOW LOAD = 10 PSF (MAX.)
RISK CATEGORY: I
WIND: V_W = 150 MPH (MAX.), (1-SEC. GUST)
WIND EXPOSURE: C
SEISMIC DESIGN CATEGORY: D
3. STEEL TUBES SHALL BE AS FOLLOWS:
12 GA: F_y = 64.5 KSI - 2-1/4" SQUARE
14 GA: F_y = 50 KSI - 2-1/2" SQUARE
4. LOCATE ANCHORS AT EACH END OF BOW.
5. FASTEN METAL ROOF PANELS TO BOW FRAME WITH 1/4"x1" SELF DRILLING FASTENERS (SDF) @ 8" O.C. MAX.
6. ALL FIELD CONNECTIONS SHALL BE 1/4"x1" SELF DRILLING SDF'S.
7. ALL SHOP CONNECTIONS SHALL BE WELDED.
8. CONTRACTOR/OWNER TO VERIFY FOOTING REQUIREMENTS WITH LOCAL BUILDING DEPARTMENT PRIOR TO CONSTRUCTION. FOOTING DESIGN IS THE RESPONSIBILITY OF OTHERS.

ELEVATION VIEW & NOTES

STANDARD CARPORT
WITH OPTIONS

HIGHWIND RATING

U1319-001-111

S1

REV
0

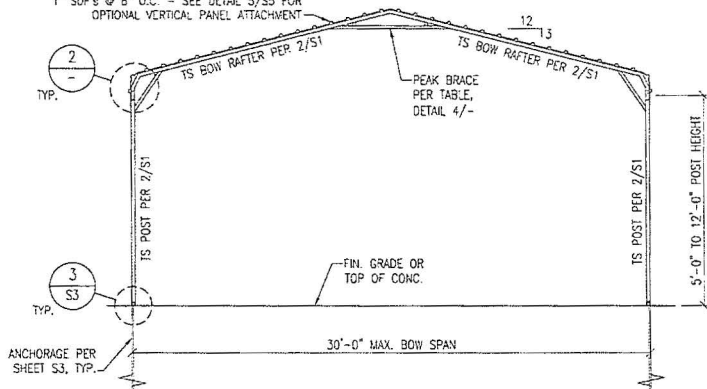


14 GA. U-CHANNEL BRACE
- LENGTH PER TABLE
FASTENED TO POST/LEG
AND BOW POSITIONED AT
45° w/ (2) 1/4" x 1"
SELF DRILLING SCREWS
(SDF's) AT EACH END. (4)
PER BRACE

BRACE CONNECTION DETAIL

N.T.S. ③

29 GA. CORRUGATED GALVANIZED METAL ROOF
PANELS FASTENED TO BOW FRAME WITH 1/4" x
1" SDF's @ 8" O.C. - SEE DETAIL 5/55 FOR
OPTIONAL VERTICAL PANEL ATTACHMENT



TYPICAL BOW SECTION

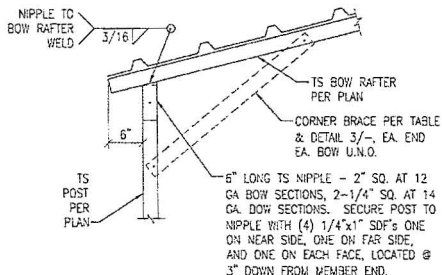
N.T.S. ①

PEAK BRACE TABLE	
UP TO 130 MPH MAX. WIND SPEED	
BOW SPAN	BRACE
UP TO 24'	2'-0" LONG PER DTL 3/-
OVER 24' TO 30'	16'-0" LONG 12 GA. TS*
131 MPH TO 150 MPH MAX. WIND SPEED	
BOW SPAN	BRACE
UP TO 20'	4'-0" LONG PER DTL 3/-
OVER 20' TO 24'	6'-0" LONG PER DTL 3/-
OVER 24' TO 30'	16'-0" LONG 12 GA. TS*

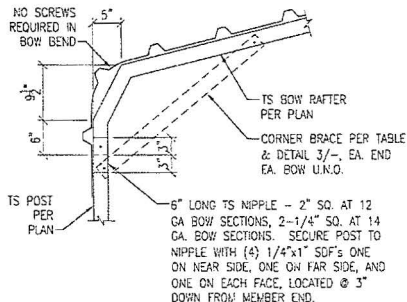
* - PEAK BRACE TO HAVE (2) TS VERTS, EQUALLY
SPACED ON HORIZONTAL - BRACE TO BE FULLY WELDED

PEAK BRACE DETAIL

N.T.S. ④



CORNER BRACE TABLE	
POST HEIGHT	BRACE LENGTH
5'-0" TO 8'-6"	2'-0"
9'-0" TO 12'-0"	3'-0"



BOW/POST DETAIL

N.T.S. ②

DESIGNED EXCLUSIVELY FOR
EAGLE CARPORTS
16388 FANCY GAP HIGHWAY
CANA, VA 24317
1-800-579-8589



SEP 19 2016

BOW FRAME DETAILS

STANDARD CARPORT
WITH OPTIONS

HIGH WIND RATING

U1319-001-111

S2

REV 0

DATE: 1-14-2015 DESIGNED BY: DRAFTER: MGP

REVISIONS	
DATE	DESCRIPTION

DESIGNED EXCLUSIVELY FOR
EAGLE CARPORTS
 10308 FANCY GAP HIGHWAY
 CANA, VA 24317
 1-800-573-8399

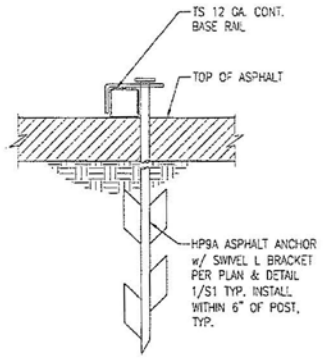


REVISED 2016

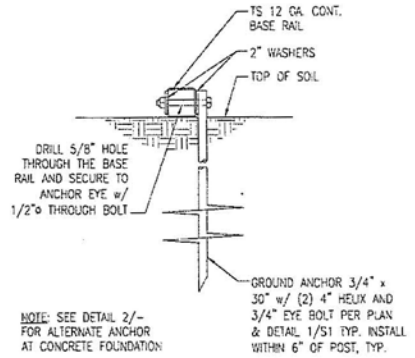
ANCHORAGE DETAILS
STANDARD CARPORT WITH OPTIONS
 HIGHWAY RATING

U1319-001-111

S3 REV 0



OPTION B

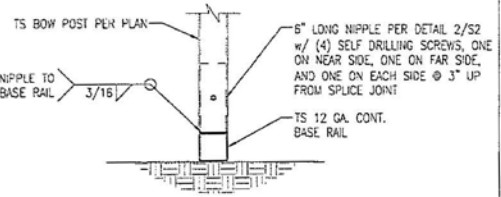


OPTION A

GROUND BASE RAIL ANCHORAGE

NOTE: SEE DETAIL 2/- FOR ALTERNATE ANCHOR AT CONCRETE FOUNDATION

GROUND ANCHOR 3/4" x 30" w/ (2) 4" HELIX AND 3/4" EYE BOLT PER PLAN & DETAIL 1/51 TYP. INSTALL WITHIN 6" OF POST, TYP.



BOW TO BASE RAIL CONNECTION DETAIL

CONCRETE:
 CONCRETE SHALL HAVE A MIN. SPECIFIED COMPRESSIVE STRENGTH OF 2500 PSI AT 28 DAYS.

COVER OVER REINFORCING STEEL:
 FOR FOUNDATIONS, MIN. CONCRETE COVER OVER REINFORCING BARS SHALL BE:

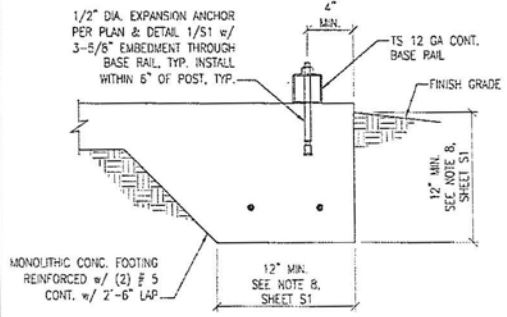
3" IN FOUNDATION WHERE THE CONCRETE IS CAST AGAINST AND PERMANENTLY IN CONTACT WITH THE EARTH OR EXPOSED TO THE EARTH OR WEATHER AND 1-1/2" ELSEWHERE.

REINFORCING STEEL:
 THE REINFORCING STEEL SHALL BE MIN. GRADE 60

GALVANIZATION:
 METAL ACCESSORIES FOR USE IN EXTERIOR WALL CONSTRUCTION AND NOT DIRECTLY EXPOSED TO THE WEATHER SHALL BE GALVANIZED IN ACCORDANCE WITH ASTM A 153, CLASS B-2, METAL PLATE CONNECTORS, SCREWS AND NAILS EXPOSED DIRECTLY TO THE WEATHER SHALL BE STAINLESS STEEL OR HOT DIPPED GALVANIZED.

REINFORCEMENT MAY BE BENT IN THE SHOD OR THE FIELD PROVIDED:

1. ALL REINFORCEMENT IS BENT COLD
2. THE DIAMETER OF THE BEND, MEASURED ON THE INSIDE OF THE BAR, IS NOT LESS THAN SIX BAR DIAMETERS
3. REINFORCEMENT PARTIALLY EMBEDDED IN CONCRETE SHALL NOT BE FIELD BENT. EXCEPTION: WHERE BENDING IS NECESSARY TO ALIGN DOWEL BARS WITH A VERTICAL CELL BARS PARTIALLY EMBEDDED IN CONCRETE SHALL BE PERMITTED TO BE BENT AT A SLOPE OF NOT MORE THAN 1" OF HORIZONTAL DISPLACEMENT TO 6" OF VERTICAL BAR LENGTH.



CONCRETE BASE RAIL ANCHORAGE

NTS

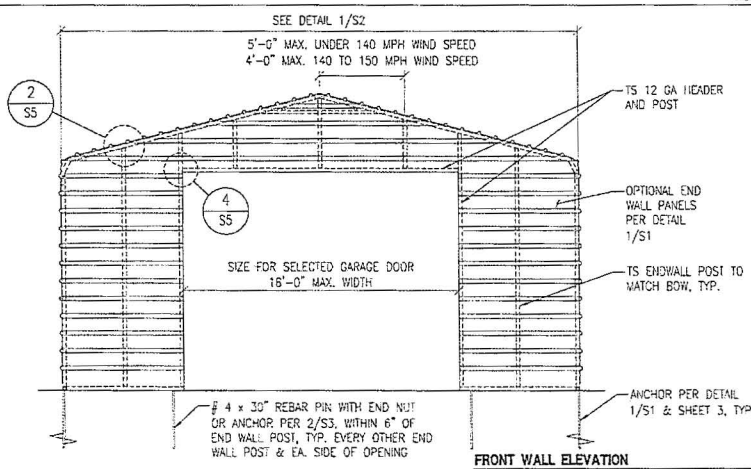
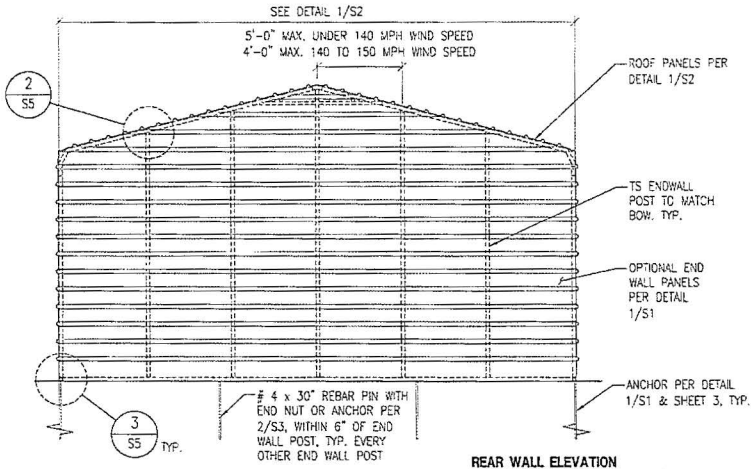
2

NOTE:

EXTERIOR WINDOWS AND GLASS DOORS SHALL BEAR AN APPROVED LABEL IDENTIFYING THE MANUFACTURER, PERFORMANCE CHARACTERISTICS AND APPROVED PRODUCT EVALUATION ENTITY TO INDICATE COMPLIANCE WITH THE FOLLOWING TABLE:

USA STEEL BUILDINGS, INC. - FLORIDA PRODUCT APPROVAL CODES			
MANUFACTURER	PRODUCT	MODEL/SERIES	APPROVAL #
USA STEEL BUILDINGS, INC.	ROOF DECKING	36-R PANEL	FL-13364
JANUS INTERNATIONAL CORP.	ROLL-UP DOOR	750 SERIES	FL-12765
POCAHONTAS ALUMINUM CO., INC.	WALK-IN DOOR	D-100	FL-12903
POCAHONTAS ALUMINUM CO., INC.	WINDOWS	100-VS	FL-12940

DOOR TABLE	
CARPORT WIDTH	MAX. DOOR WIDTH
12'-0"	8'-0"
14'-0" TO 16'-0"	10'-0"
18'-0" TO 20'-0"	12'-0"
22'-0"	16'-0" OR (2) 8'-0"
24'-0"	16'-0" OR (2) 9'-0"
26'-0" TO 28'-0"	16'-0" OR (2) 10'-0"
30'-0"	16'-0" OR (2) 12'-0"



1108 S. State St., Suite 101 (901) 900-1775
Bossier City, LA 70604 (901) 900-1776 FAX
www.vectorcorp.com

DATE: 1-14-2016 DESIGNED: DCV DRAFTER: MDP

REVISIONS	
DATE	DESCRIPTION

DESIGNED EXCLUSIVELY FOR
EAGLE CARPORTS
16398 FANCY GAP HIGHWAY
CANVA, VA 24317
1-800-575-8529

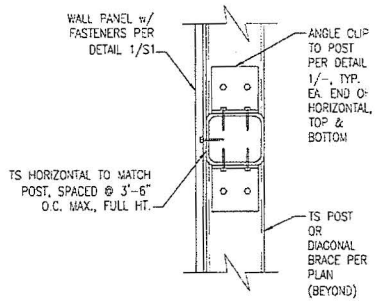


SEP 19 2016

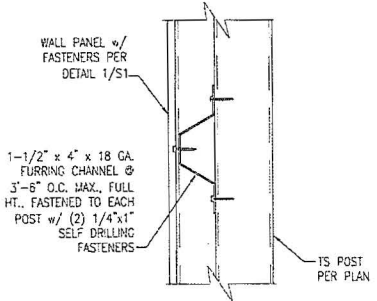
END WALL ELEVATIONS
STANDARD CARPORT
WITH OPTIONS
HIGH WIND RATING

U1319-001-111

S4 REV 0



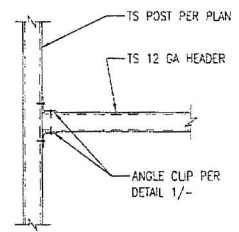
FLUSH TS HORIZONTAL OPTION



FURRING CHANNEL OPTION

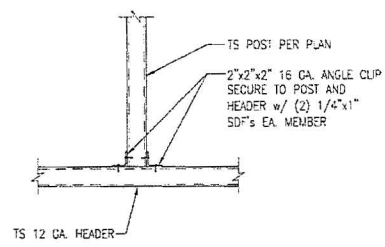
VERTICAL WALL PANEL ATTACHMENT

6



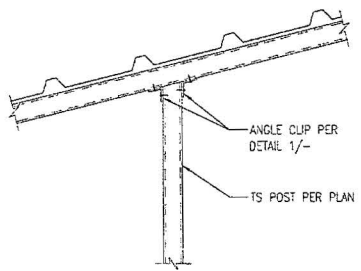
HEADER TO POST CONN. DETAIL

4



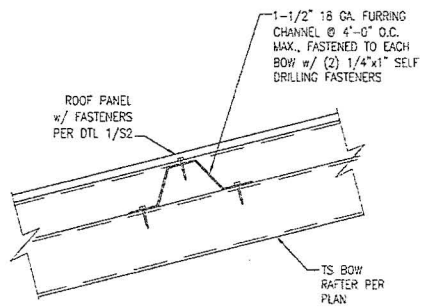
END POST TO HEADER/RAIL CONN. DETAIL

1



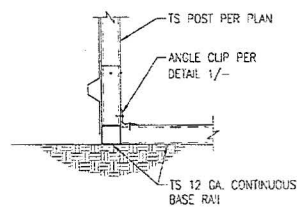
END POST/BOW CONN. DETAIL

2



VERTICAL ROOF PANEL ATTACHMENT

5



END BOW/BASE RAIL CONN. DETAIL

3

DATE: 7-14-2011	DESIGNED BY: GRAFFER, MCP
REVISIONS	
DATE	DESCRIPTION

DESIGNED EXCLUSIVELY FOR
EAGLE CARPORTS
 18308 FANCY GAP HIGHWAY
 CANA, VA 24317
 1-800-575-8589



SEP 1 2016

DETAILS
STANDARD CARPORT WITH OPTIONS
 HIGH WIND RATING

U1319-001-111

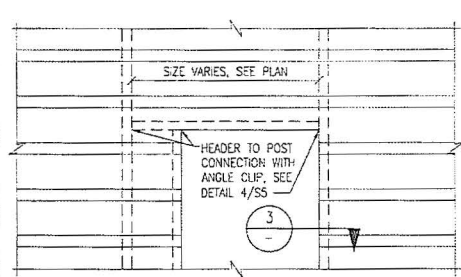
S5

REV 0

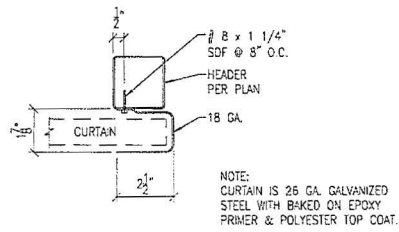
DATE: 1-14-2016 DESIGNED BY: CRAMER, MCP

REVISIONS	
DATE	DESCRIPTION

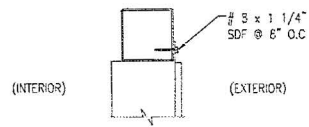
DESIGNED EXCLUSIVELY FOR
EAGLE CARPORTS
18398 FANCY GAP HIGHWAY
CANA, VA 24317
1-800-579-8589



SEE DETAIL 1/S7 FOR ANCHOR REQUIREMENTS **DOOR FRAME - ELEVATION VIEW** N.T.S. 1



SECTION THROUGH ROLL UP DOOR HEADER N.T.S. 2



SECTION N.T.S. 3



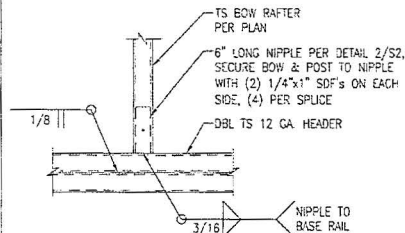
SEP 13 2016

DETAILS
STANDARD CARPORT WITH OPTIONS
HIGH WIND RATING

U1319-001-111

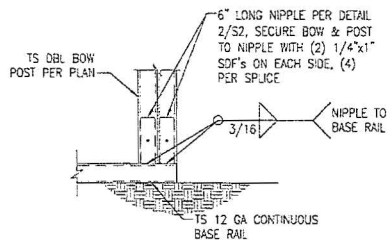
S6

REV 0



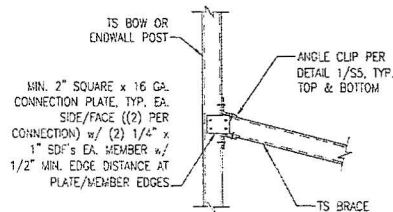
BOW/HEADER DETAIL

3



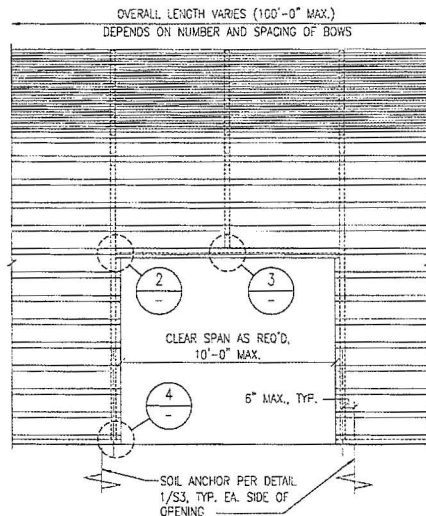
BOW/BASE RAIL CONN. DETAIL

4



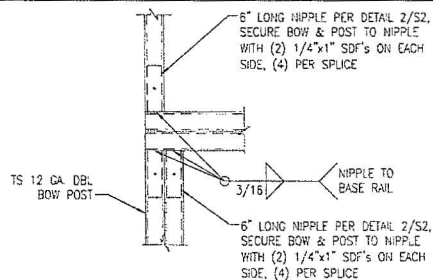
BRACE CONNECTION DETAIL

5



SIDE OPENING

1



BOW/POST DETAIL

2

REVISIONS	
DATE	DESCRIPTION

DESIGNED EXCLUSIVELY FOR
EAGLE CARPORTS
16398 FANCY GAP HIGHWAY
CANA, VA 24317
1-800-579-8589



SEP 1 9 2010

DETAILS

STANDARD CARPORT
WITH OPTIONS

HIGH RISE RAINING

U1319-001-111

S7

REV
0

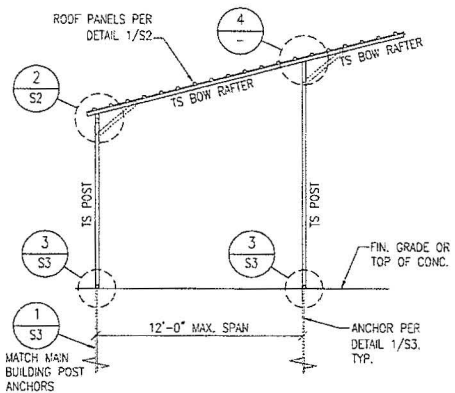
DATE: 7-14-2015 DESIGNED BY: KRAFTER, MCP

REVISIONS	
DATE	DESCRIPTION

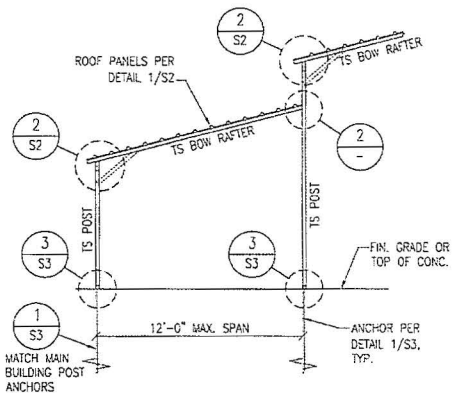
DESIGNED EXCLUSIVELY FOR
EAGLE CARPORTS
18398 FANCY GAP HIGHWAY
CANAWA, VA 24317
1-800-579-8589



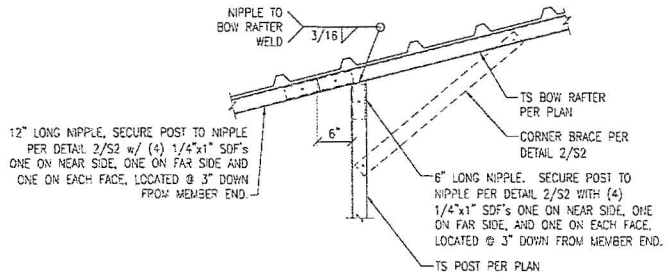
SEP 18 2015



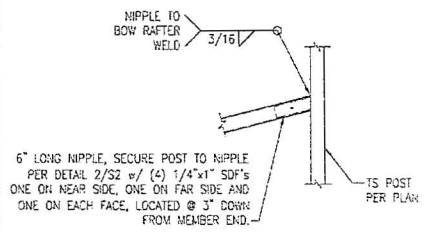
IN-LINE EXTENSION SECTION 3



STEP-DOWN EXTENSION SECTION 1



IN-LINE CONNECTION DETAIL 4



STEP-DOWN CONNECTION DETAIL 2

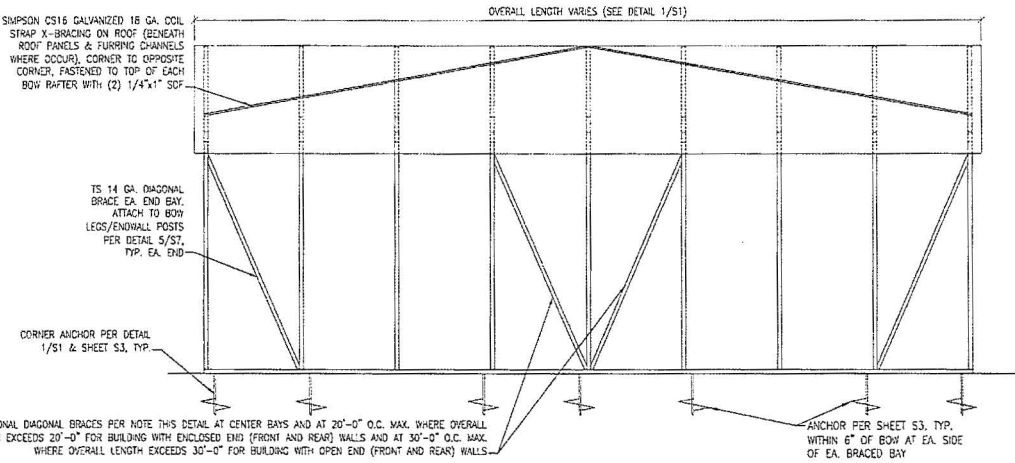
DETAILS
STANDARD CARPORT WITH OPTIONS
 HIGH WIND RATING

U1319-001-111

S8 REV 0

REVISIONS	
DATE	DESCRIPTION

DESIGNED EXCLUSIVELY FOR
EAGLE CARPORTS
18398 FANCY GAP HIGHWAY
CANVA, VA 24317
1-800-579-8559

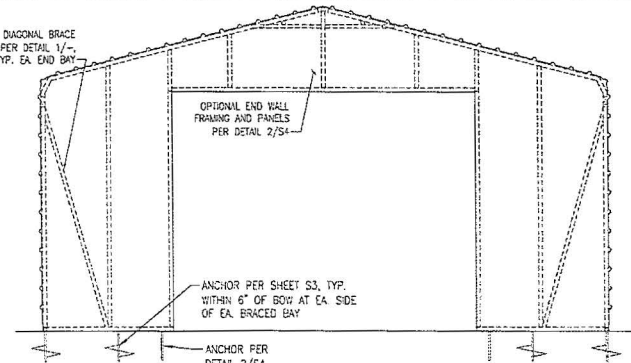


(2) ADDITIONAL DIAGONAL BRACES PER NOTE THIS DETAIL AT CENTER BAYS AND AT 20'-0" O.C. MAX. WHERE OVERALL LENGTH EXCEEDS 20'-0" FOR BUILDING WITH ENCLOSED END (FRONT AND REAR) WALLS AND AT 30'-0" O.C. MAX. WHERE OVERALL LENGTH EXCEEDS 30'-0" FOR BUILDING WITH OPEN END (FRONT AND REAR) WALLS.

ANCHOR PER SHEET S3, TYP. WITHIN 6" OF BOW AT EA. SIDE OF EA. BRACED BAY

SIDE ELEVATION - 131 TO 150 MPH WIND

N.T.S. 1

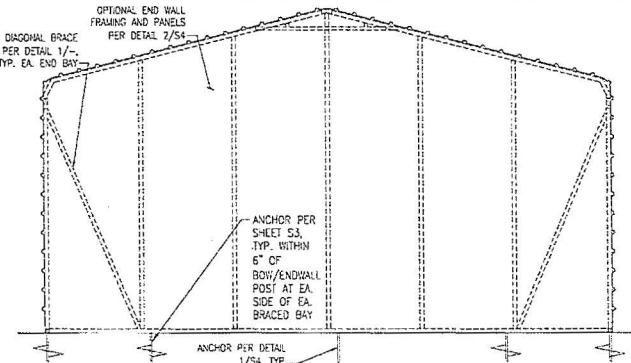


ANCHOR PER SHEET S3, TYP. WITHIN 6" OF BOW AT EA. SIDE OF EA. BRACED BAY

ANCHOR PER DETAIL 2/54, TYP.

FRONT WALL SECTION - 131 TO 150 MPH WIND

N.T.S. 3



ANCHOR PER SHEET S3, TYP. WITHIN 6" OF BOW/ENDWALL POST AT EA. SIDE OF EA. BRACED BAY

ANCHOR PER DETAIL 1/54, TYP.

REAR WALL SECTION - 131 TO 150 MPH WIND

N.T.S. 2

ROOFWALL BRACING DETAILS

STANDARD CARPORT WITH OPTIONS

HIGH WIND RATING

U1319-001-111

S9

REV 0