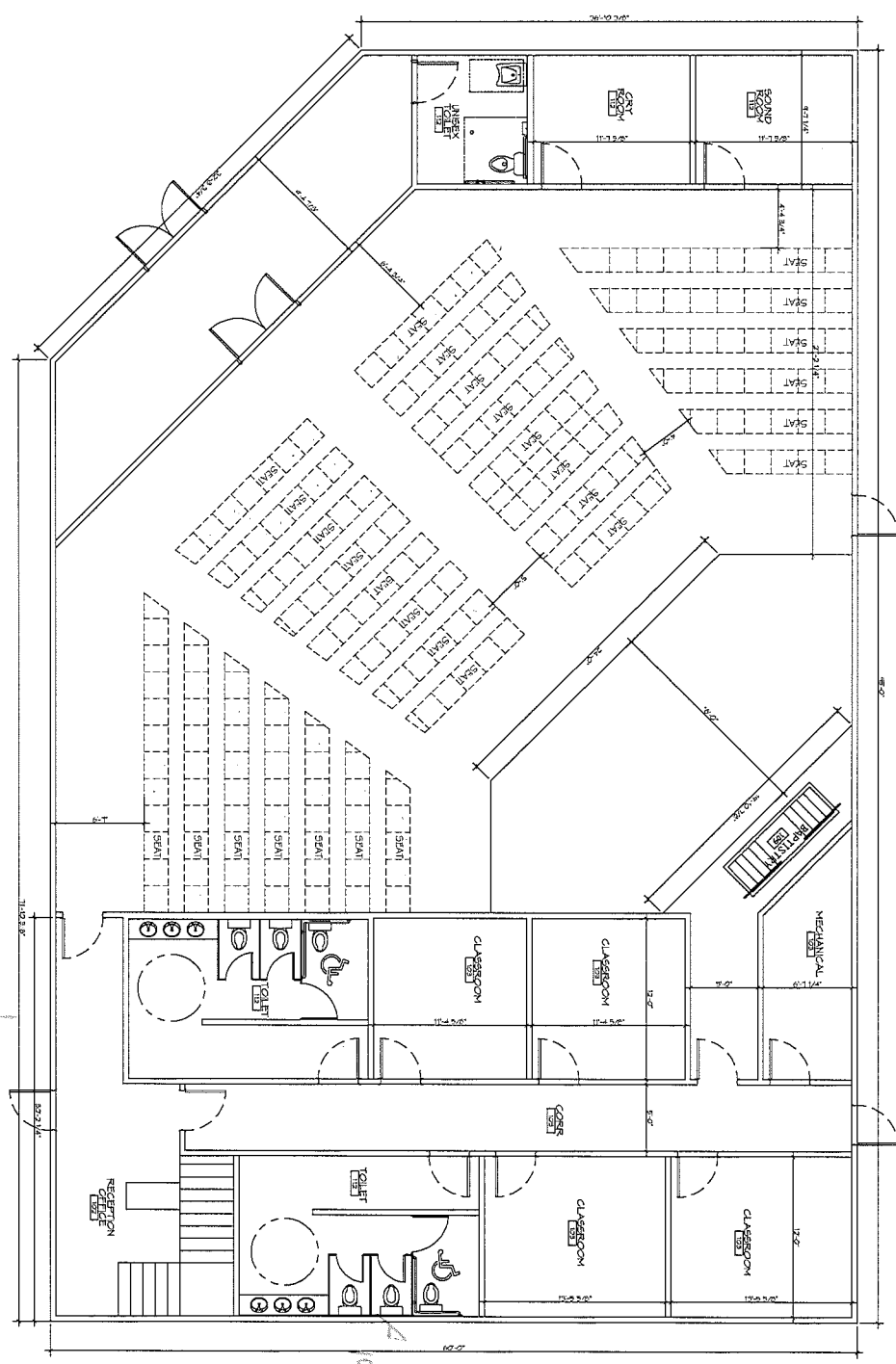


Chesterfield St

Dawkin St

Parking



ARCHITECTURAL FLOOR PLAN

02 of 02 sheets
A1

NEW CHURCH:
**RHEMA
MINISTRY**
DARIN ST.
METAIRIE, LOUISIANA
JOB No. 1777 DATE: 01.14.2014
DRAWN BY: GMD CHECKED BY: KJK

NO.	DESCRIPTION	REVISIONS	DATE

DAMMON
ENGINEERING, INC.
Architects & Engineers
www.dammonengineering.com
Chief Architect: Brian J. Dammon, NCAB
Chief Engineers: Brian Muecke, PE
254 Old Spanish Trail
Bossier, LA 70604
PH: 985-648-2117
F: 985-641-2500