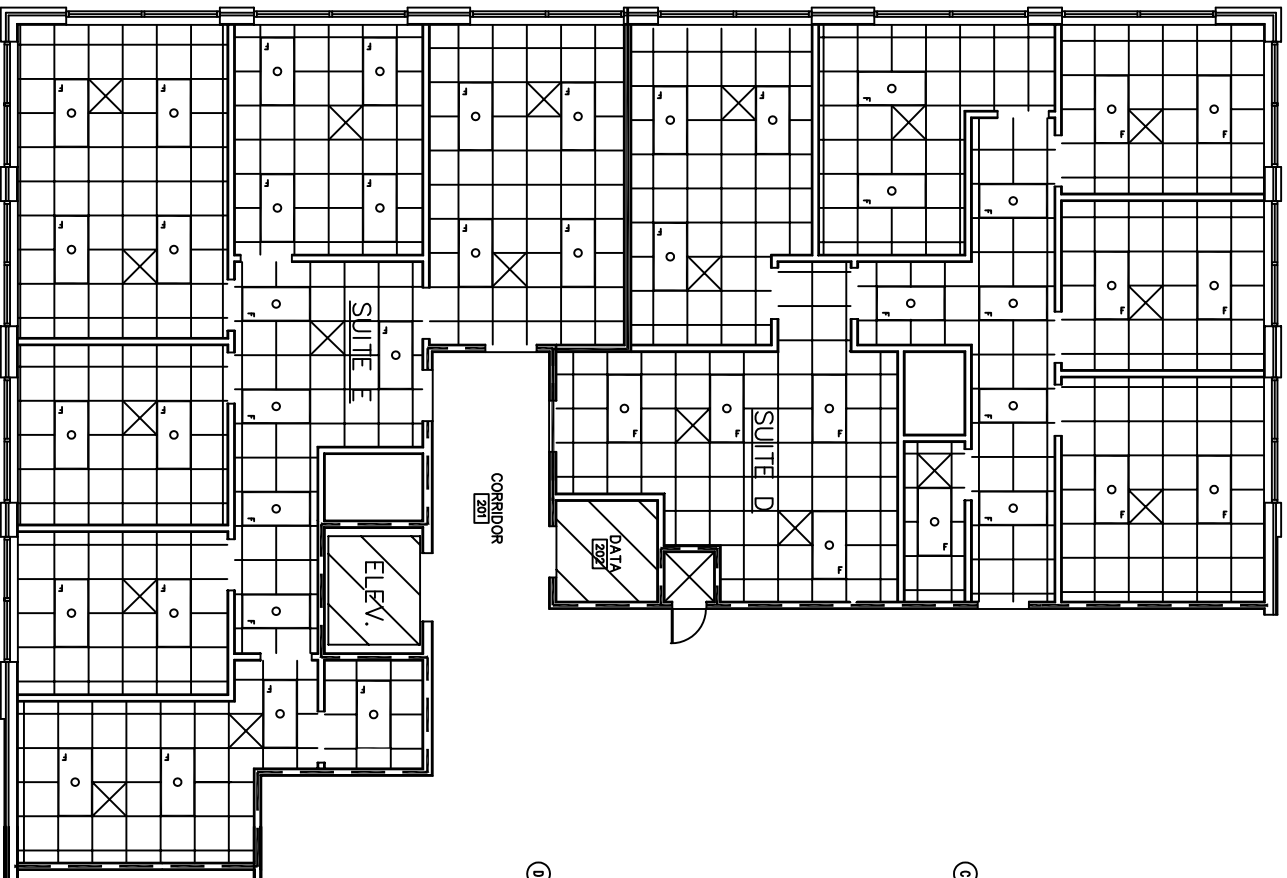
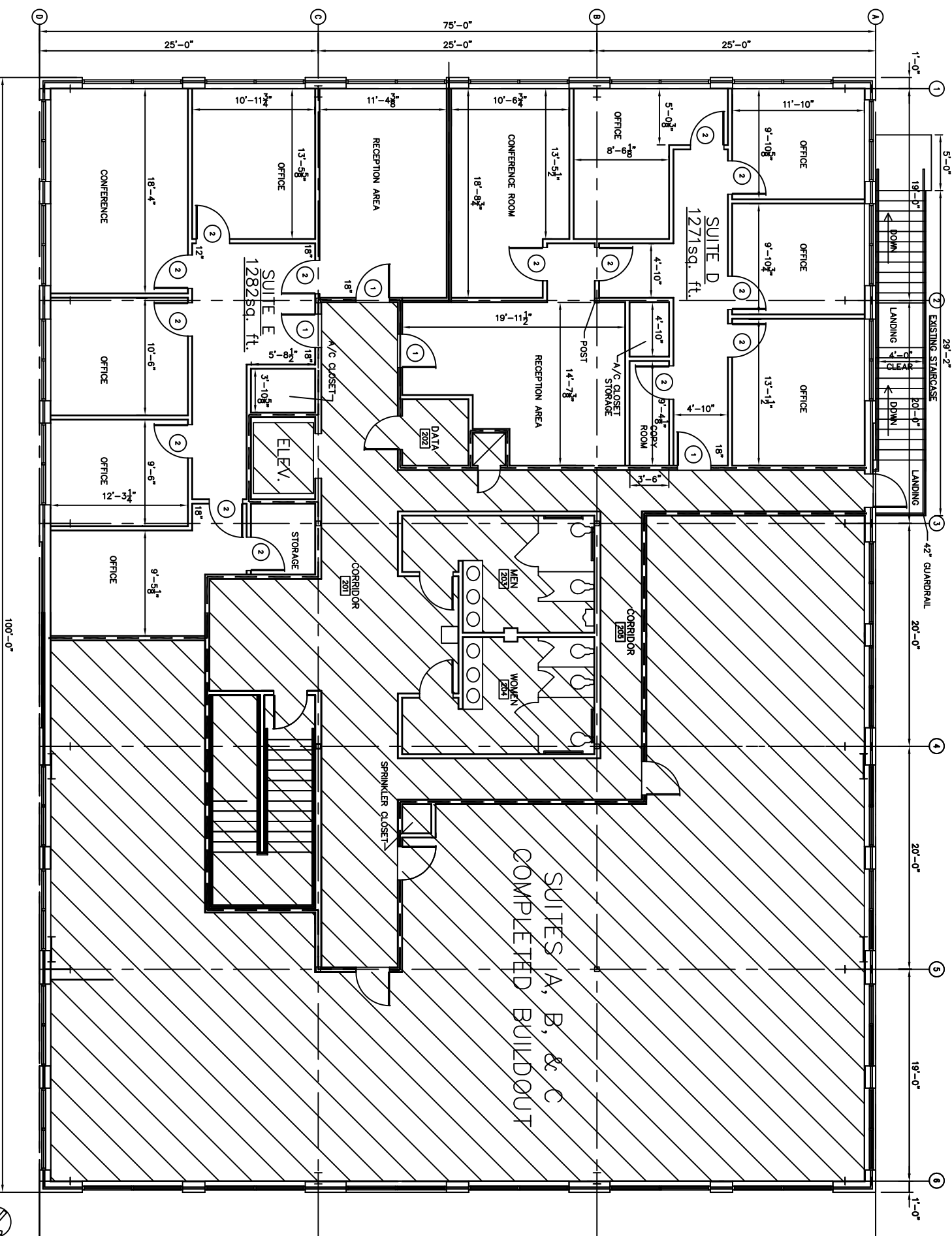


NAME	FLOOR	BASE	WALL	CEILING	REMARKS
OFFICES		● VCT			
		● CONC. W/SEALER			
		● CERAMIC TILE			
		● CONCRETE			
		● VINYL BASE			
		● CERAMIC TILE			
		● NONE			
		● GYP.BD			
		● CERAMIC TILE			
		● GYP.BD. PAINTED			
		● 2'x2' SUSP. ACOUST.			
		● CLG. HGT.			
		● 10'-0"			

DOOR & HARDWARE SCHEDULE		REMARKS
NO.	SIZE	
1	3/0x7/0	SOLID WOOD
2	3/0x7/0	HOLLOW MTL.
		STOREFRONT
		STEEL
		ALUMINUM
		WOOD
		DBL SWING
		BUTT
		PASSAGE
		PRIVACY
		DEADBOLT
		KEYED HANDLE
		PUSH PULL
		THRESHOLD
		WEATHERSTRIP
		DOOR STOP
		CLOSER
		20 MIN RATED



2 PARTIAL 2ND FLOOR PLAN REFLECTED CEILING
A-1 NOT TO SCALE



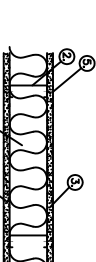
1 FLOOR PLAN-SECOND FLOOR
A-1 3/16"=1'-0"

AREA BY USE
 SUITE D = 1,271 SQ. FT.
 SUITE E = 1,282 SQ. FT.
 TOTAL = 2,553 SQ. FT.

THIS FLOOR FULLY SPRINKLED

UL NOTES:

- FLOOR AND CEILING FINISHES (NOT SHOWN) 25 LBS MIN. GALV. STEEL, 1" HIGH, RETURN LEGS 3/8" (MIN.), ATTACHED TO FLOOR AND CEILING WITH FASTENERS
- STEEL STUDS:-
3-5/8" WIDE (MIN.), 1-1/4" LEGS, 3/8" RETURN, FORMED OF 25 LBS GALV. STEEL, MAX. SPACING 24" O.C.
- GYP/SIM WALLBOARD:-
5/8" THICK, 4" WIDE, ATTACHED TO STEEL STUDS AND FLOOR AND CEILING TRACK WITH 1" LONG TYPE "S" SELF-PARING 1/2" O.C. IN THE FIELD OF THE BOARD. JOINTS ORIENTED VERT. AND STAGGERED ON OPPOSITE SIDES OF THE ASSEMBLY.
- BATTES AND BLANKETS:-
MINERAL WOOL INSULATION, PARTIALLY OR COMPLETELY FILLING STUD CAVITY.
- JOINT AND TAPE COMPOUND:-
VINYL DRY OR PREMIER JOINT COMPOUND, APPLIED IN TWO COATS IN FIRST LAYER OF COMPOUND OVER ALL JOINTS. AS AN ALTERNATE, NOMINAL 3/32" THICK GYPSUM VENEER PLASTER MAY BE APPLIED TO THE ENTIRE SURFACE OF CLASSIFIED VENEER BASEBOARD. JOINT REMOVED.



ONE HOUR FIRE WALL
N.T.S.

OF
A-1
SHEET

FILE:
JOB NO. 1517B
DATE: 10-18-05
SCALE: AS NOTED

C.N.S. INVESTMENTS CORP.
DAMMON ENGINEERING, INC.
 ARCHITECTS - ENGINEERS
 2000 OLD SPANISH TRAIL, STE 100 985-649-5832 SLIDELL, LA. 70458
 DAMMONENGINEERING.COM

2ND FLOOR BUILD-OUT
 K.B. KAUFMANN & CO., INC.
 OAK HARBOR SUBDIVISION
 SLIDELL, LOUISIANA