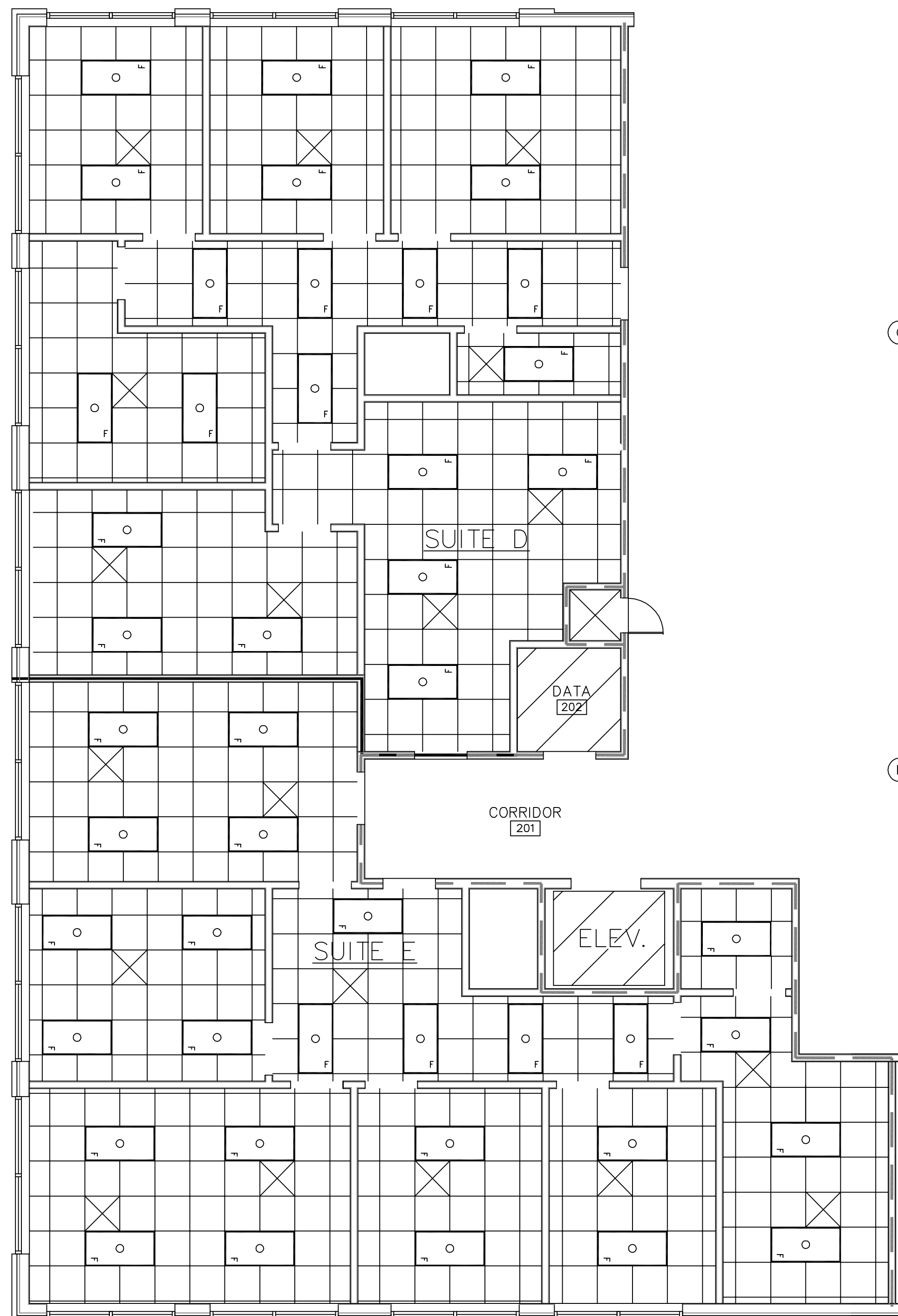
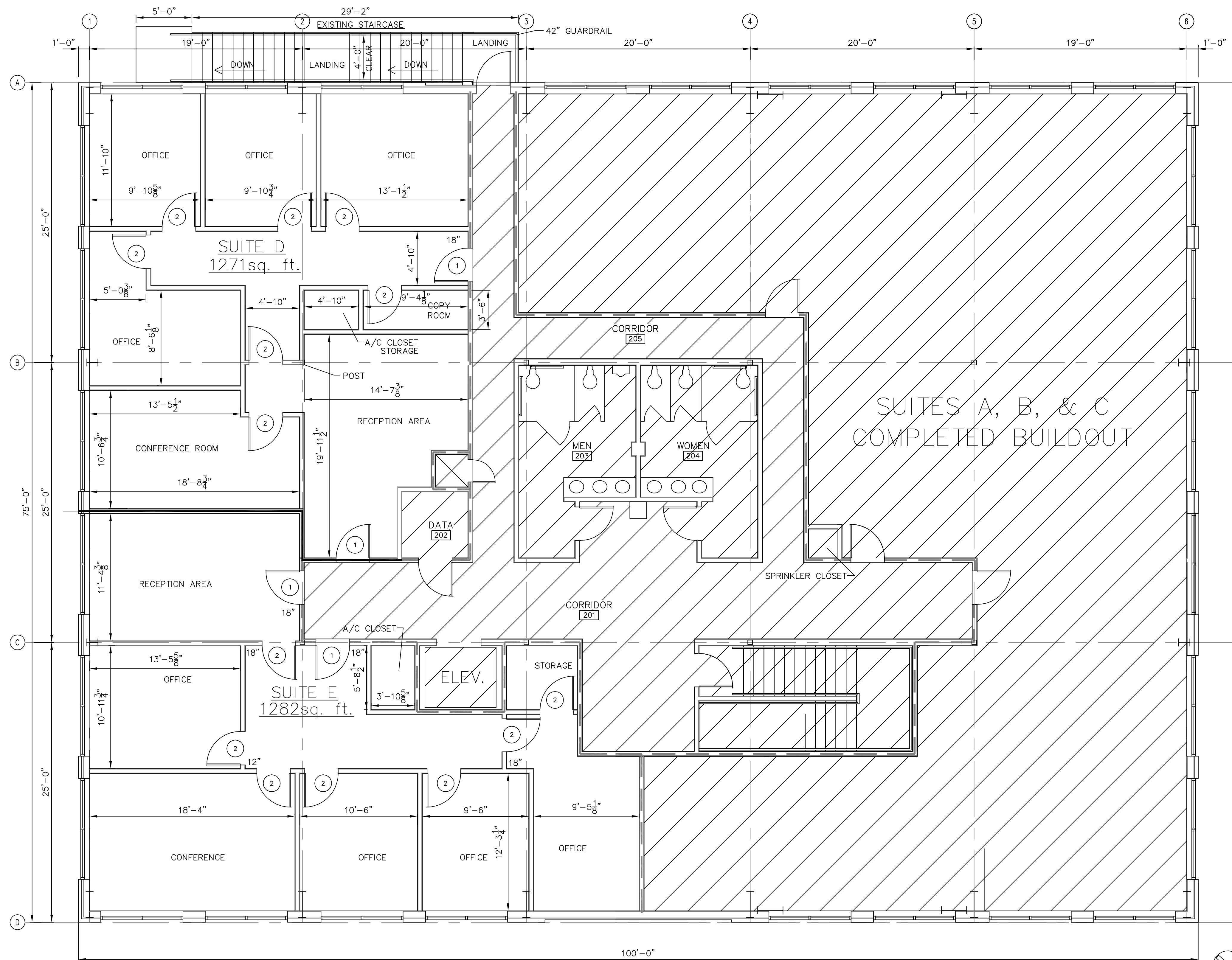


ROOM FINISH SCHEDULE					
NAME	FLOOR	BASE	WALL	CEILING	REMARKS
	VCT				
	CONC. W/SEALER				
	CERAMIC TILE				
	CONCRETE				
	VINYL BASE				
	CERAMIC TILE				
	NONE				
	GYP.BD				
	CERAMIC TILE				
	GYP.BD. PAINTED				
	2'x2' SUSP. ACoust.				
				CLG. HGT.	
OFFICES	●				
		●			
			●		
				●	

DOOR & HARDWARE SCHEDULE							
NO.	SIZE	TYPE	FRAME	HINGE	LOCK	ACCESS.	REMARKS
1	3/0x7/0	SOLID WOOD	STEEL	DBL SWING	PASSAGE		
2	3/0x7/0	HOLLOW MTL.	ALUMINUM	BUTT	PRIVACY		20 MIN RATED
		STOREFRONT	WOOD		DEADBOLT		
					KEYED HANDLE		
					PUSH PULL		
					THRESHOLD		
					WEATHERSTRIP		
					DOOR STOP		
					CLOSER		



2 PARTIAL 2ND FLOOR PLAN REFLECTED CEILING
NOT TO SCALE



1 FLOOR PLAN-SECOND FLOOR
3/16"=1'-0"

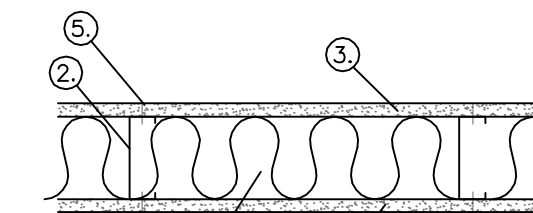
THIS FLOOR FULLY SPRINKLED

AREA BY USE

SUITE D = 1,271 SQ. FT.
SUITE E = 1,282 SQ. FT.
TOTAL = 2,553 SQ. FT.

UL NOTES:

- 1. FLOOR AND CEILING RUNNER-
(NOT SHOWN) 25 MSG MIN. GALV. STEEL 1" HIGH, RETURN LEGS 3-5/8" (MIN.), ATTACHED TO FLOOR AND CEILING WITH FASTENERS AT 24" O.C.
- 2. STEEL STUDS-
3-5/8" WIDE (MIN.), 1-1/4" LEGS, 3/8" RETURN, FORMED OF 25 MSG GALV. STEEL, MAX. SPACING 24" O.C.
- 3. GYPSUM WALLBOARD-
5/8" THICK, 4' WIDE, ATTACHED TO STEEL STUDS AND FLOOR AND CEILING TRACK WITH 1" LONG TYPE "S" SELF-TAPPING STEEL SCREWS SPACED 8" O.C. ALONG EDGES OF BOARD AND 12" O.C. IN THE FIELD OF THE BOARD. JOINTS ORIENTED VERT. AND STAGGERED ON OPPOSITE SIDES OF THE ASSEMBLY.
- 4. BATTIS AND BLANKETS-
MINERAL WOOL INSULATION, PARTIALLY OR COMPLETELY FILLING STUD CAVITY.
- 5. JOINT AND TAPE COMPOUND-
VINYL, DRY OR PREMIXED JOINT COMPOUND, APPLIED IN TWO COATS TO JOINTS AND SCREW HEADS; PAPER TAPE, 2" WIDE, EMBEDDED IN FIRST LAYER OF COMPOUND OVER ALL JOINTS. AS AN ALTERNATE NOMINAL 3/32" THICK GYPSUM VENEER PLASTER MAY BE APPLIED TO THE ENTIRE SURFACE OF CLASSIFIED VENEER BASEBOARD. JOINT REINFORCED.



ONE HOUR FIRE WALL
N.T.S.

2ND FLOOR BUILD-OUT

C.N.S. INVESTMENTS CORP.
DAMMON ENGINEERING, INC.
ARCHITECTS - ENGINEERS
2000 OLD SPANISH TRAIL, SUITE 100 985-649-5832 SLIDELL, LA. 70458
DAMMONENGINEERING.COM

K.B. KAUFMANN & CO., INC.
OAK HARBOR SUBDIVISION
SLIDELL, LOUISIANA

SCALE: AS NOTED

FILE:

JOB NO. 1517B

DATE: 10-18-05

SHEET

A-1

OF