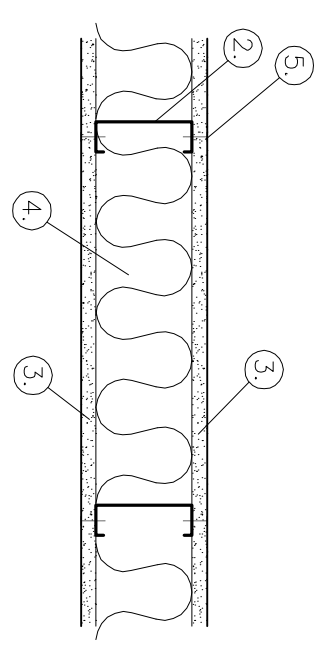


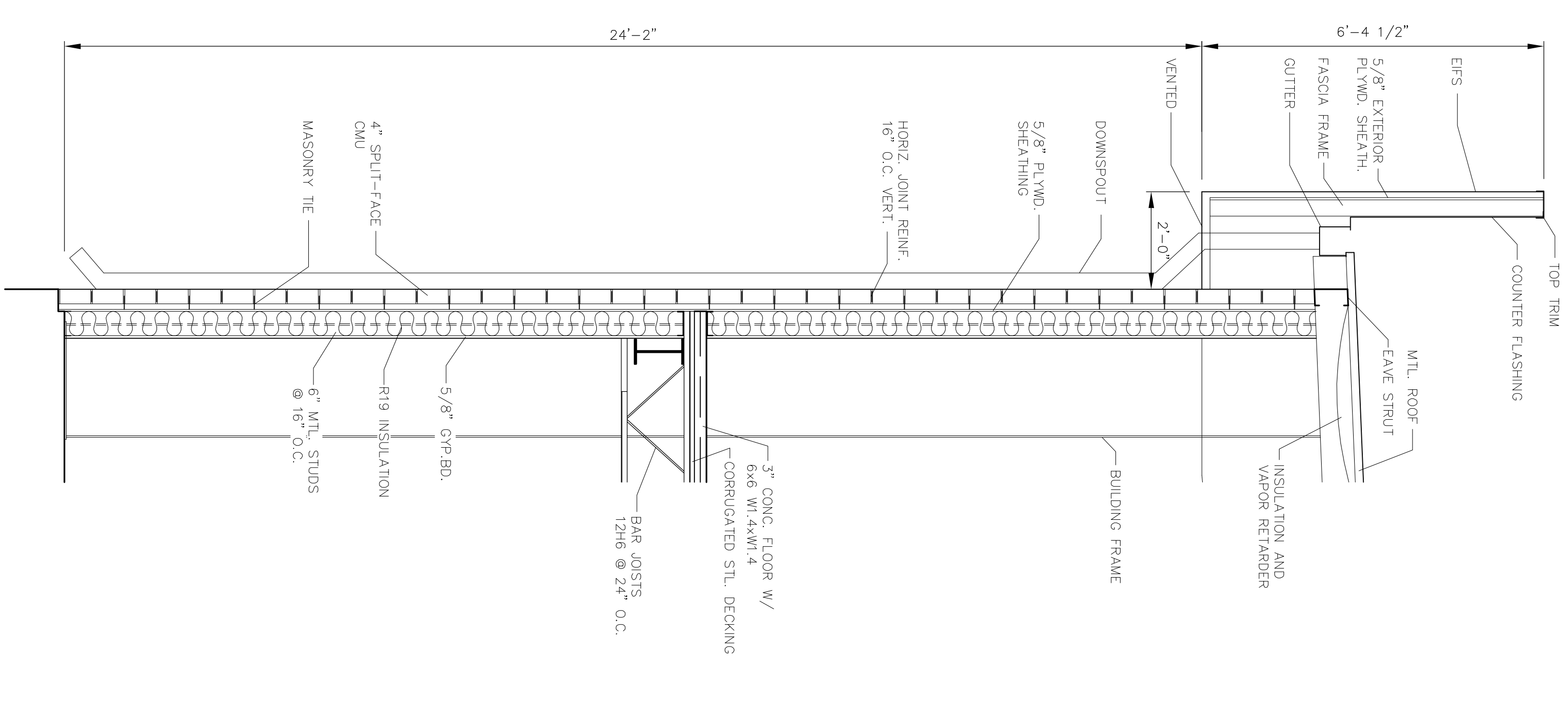
1 BUILDING SECTION  
1/4"=1'-0"

NOTE:  
IF A/C ROOFTOP UNITS ARE VISIBLE FROM STREET,  
PROVIDE OPACQUE SCREEN.

- UL NOTES:  
UL465
- FLOOR AND CEILING RUNNER— (NOT SHOWN) 25 MSG MIN. GALV. STEEL, 1" HIGH, RETURN LEGS 3-5/8" (MIN), ATTACHED TO FLOOR AND CEILING WITH FASTENERS AT 24" O.C.
  - STEEL STUDS— 3-5/8" WIDE (MIN.), 1-1/4" LEGS, 3/8" RETURN, FORMED OF 25 MSG GALV. STEEL, MAX. SPACING 24" O.C.
  - CEPSUM WALLBOARD— 5/8" THICK, 4" WIDE, ATTACHED TO STEEL STUDS AND FLOOR AND CEILING TRACK WITH 1" LONG TYPE "S" SELF-TAPPING STEEL SCREWS SPACED 8" O.C. ALONG EDGES OF BOARD AND 12" O.C. IN THE FIELD OF THE BOARD. JOINTS ORIENTED VERT. AND STAGGERED ON OPPOSITE SIDES OF THE ASSEMBLY.
  - BATTS AND BLANKETS— MINERAL WOOL INSULATION, PARTIALLY OR COMPLETELY FILLING STUD CAVITY.
  - JOINT AND TAPE COMPOUND— VINYL, DRY OR PREMIKED JOINT COMPOUND, APPLIED IN TWO COATS TO JOINTS AND SCREW HEADS; PAPER TAPE, 2" WIDE, EMBEDDED IN FIRST LAYER OF COMPOUND OVER ALL JOINTS, AS AN ALTERNATE, NOMINAL 3/32" THICK GIPSUM VENEER PLASTER MAY BE APPLIED TO THE ENTIRE SURFACE OF CLASSIFIED VENEER BASEBOARD. JOINT REINFORCED.



3 1 HOUR FIRE-WALL (UL468)  
1-1/2"=1'-0"



2 WALL SECTION  
1/2"=1'-0"

SECTIONS  
K.B. KAUFMANN & CO., INC.  
OAK HARBOR S/D-BLDG #2  
SLIDELL, LOUISIANA

C.N.S. INVESTMENTS CORP.

**DAMMON ENGINEERING, INC.**  
ARCHITECTS — ENGINEERS

2000 OLD SPANISH TRAIL, STE 100 985-649-5832 SLIDELL, LA. 70458  
DAMMONENGINEERING.COM

SCALE: AS NOTED

FILE:

JOB NO.

DATE: 12-19-03

SHEET

A-3

OF