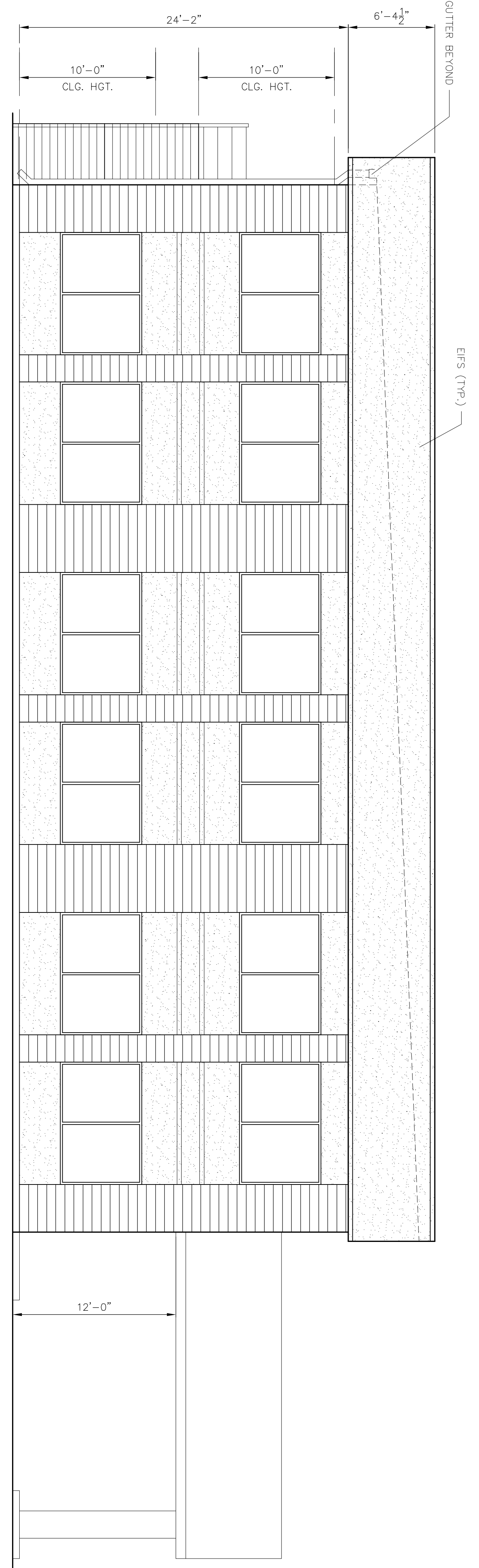
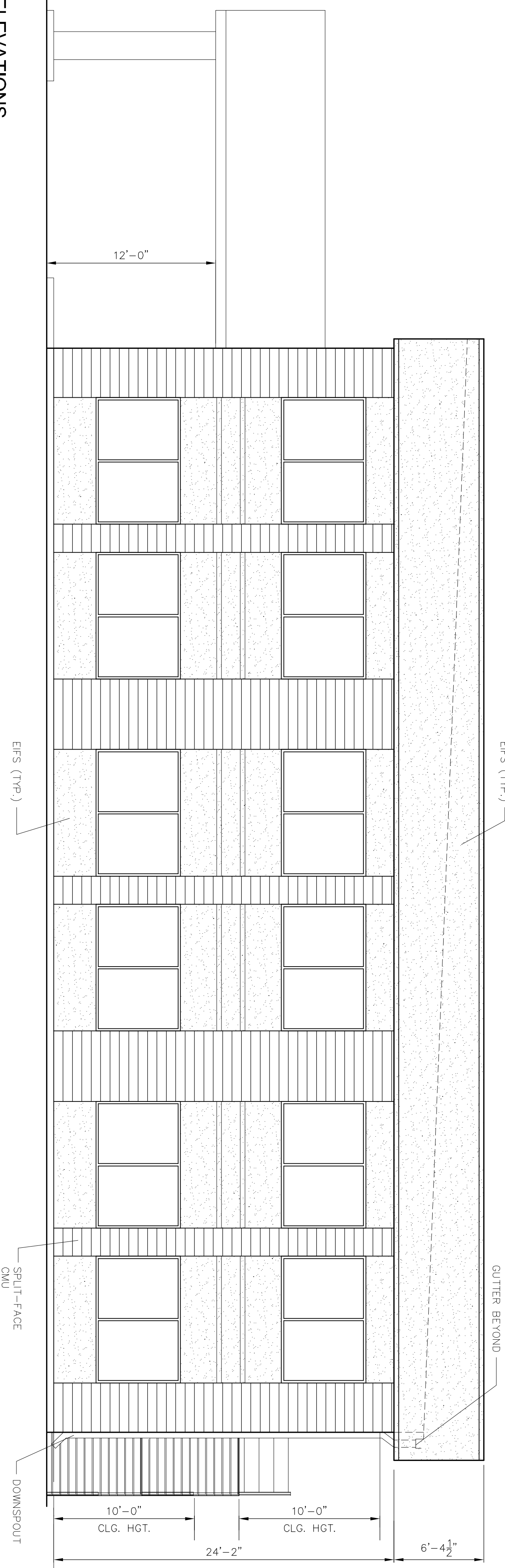


1
A-5
3/16"=1'-0"



2
A-5
3/16"=1'-0"



ELEVATIONS
K.B. KAUFMANN & CO., INC.
OAK HARBOR S/D-BLDG. #2
SLIDELL, LOUISIANA

C.N.S. INVESTMENTS CORP.
DAMMON ENGINEERING, INC.
ARCHITECTS — ENGINEERS
2000 OLD SPANISH TRAIL, STE 100 985-649-5832 SLIDELL, LA. 70458
DAMMONENGINEERING.COM

SCALE: AS NOTED

FILE:

JOB NO.

DATE: 12-19-03

SHEET

A-5

OF