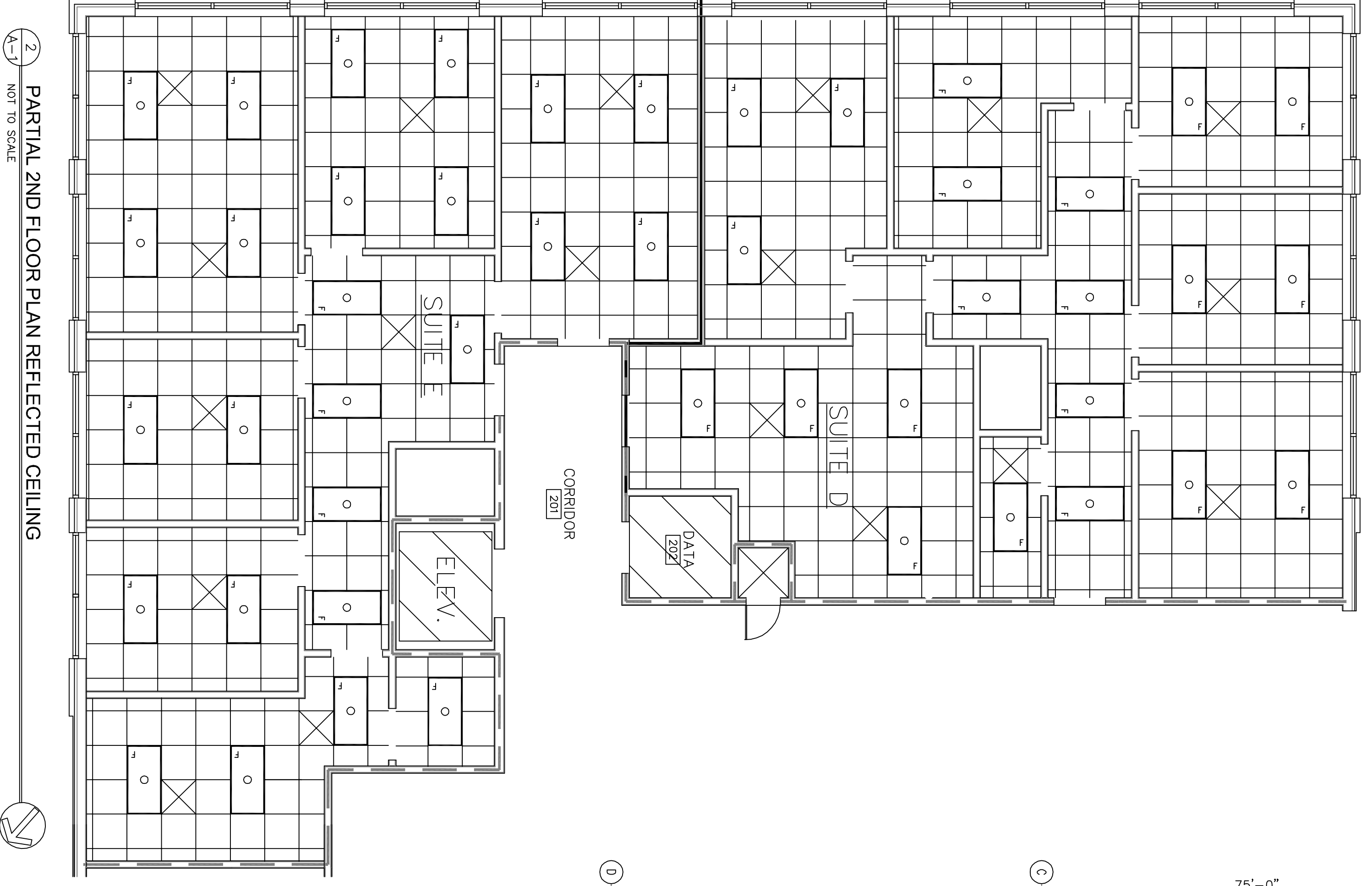
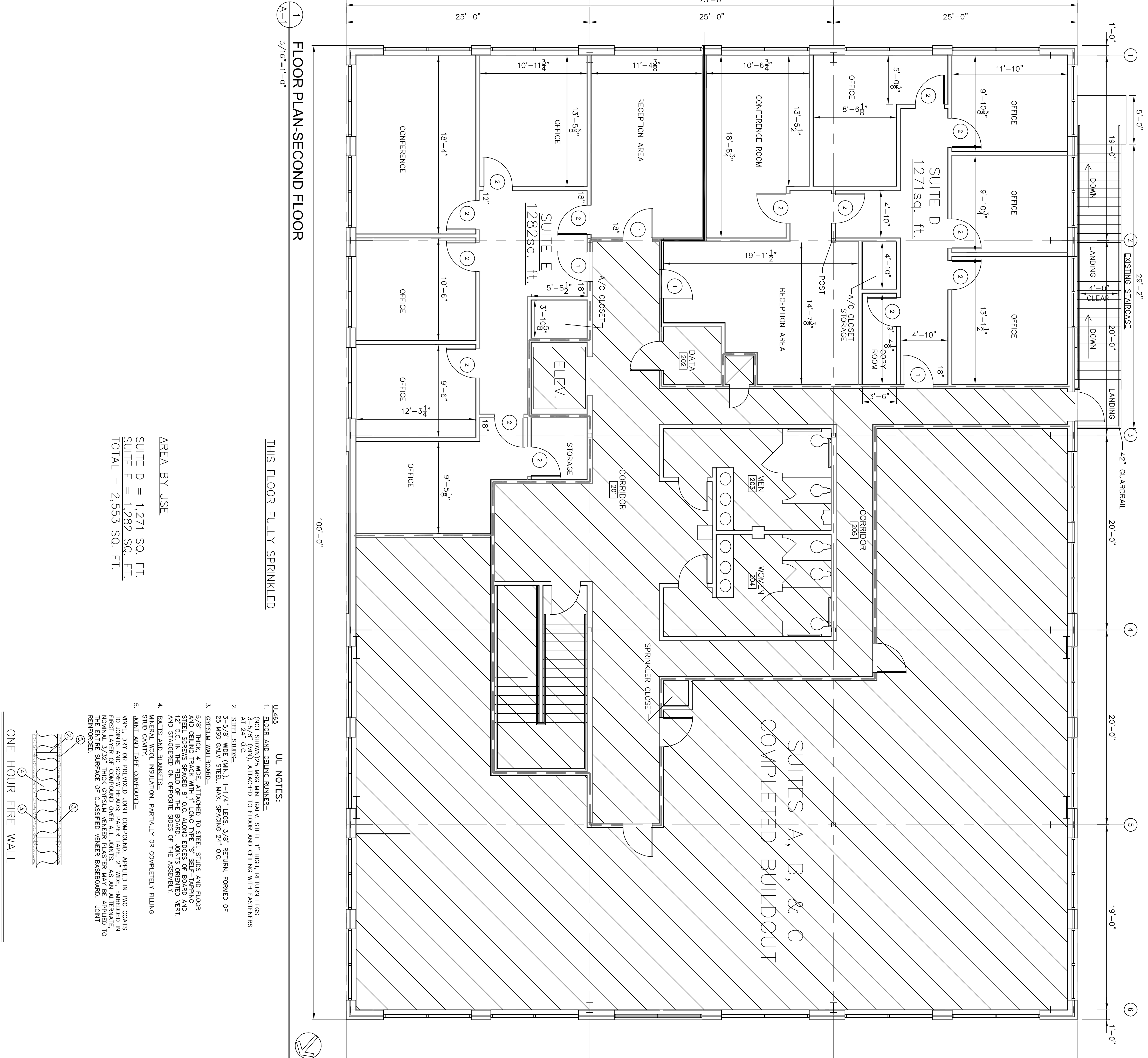


ROOM FINISH SCHEDULE					REMARKS
NAME	FLOOR	BASE	WALL	CEILING	
OFFICES		VCT			
		CONC. W/SEALER			
		CERAMIC TILE			
		CONCRETE			
		VINYL BASE			
		CERAMIC TILE			
		NONE			
		GYP.BD			
		CERAMIC TILE			
		GYP.BD. PAINTED			
		2'x2' SUSP. ACOUST.			
		CLG. HGT.			
				10'-0"	

DOOR & HARDWARE SCHEDULE						REMARKS	
NO.	SIZE	TYPE	FRAME	HINGE	LOCK	ACCESS.	
1	3/0x7/0	SOLID WOOD					
		HOLLOW MTL.					
		STOREFRONT					
2	3/0x7/0	STEEL					
		ALUMINUM					
		WOOD					
		DBL SWING					
		BUTT					
		PASSAGE					
		PRIVACY					
		DEADBOLT					
		KEYED HANDLE					
		PUSH PULL					
		THRESHOLD					
		WEATHERSTRIP					
		DOOR STOP					
		CLOSER					
							20 MIN RATED



2 PARTIAL 2ND FLOOR PLAN REFLECTED CEILING
1/4" = 1'-0"

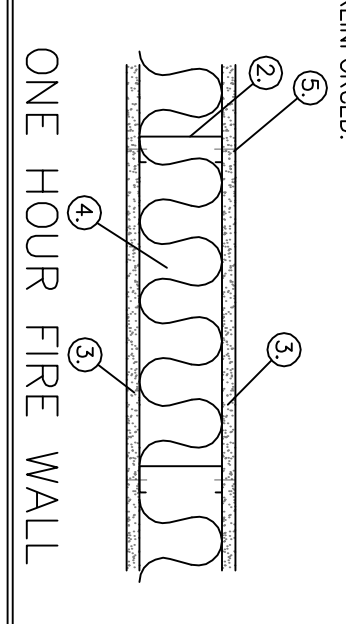


1 FLOOR PLAN-SECOND FLOOR
3/16" = 1'-0"

THIS FLOOR FULLY SPRINKLED

AREA BY USE
 SUITE D = 1,271 SQ. FT.
 SUITE E = 1,282 SQ. FT.
 TOTAL = 2,553 SQ. FT.

- UL685 UL NOTES:
- FLOOR AND CEILING RUNNER- (NOT SHOWN) 25 MSG MIN. GALV. STEEL, 1" HIGH, RETURN LEGS AT 1/4" O.C., ATTACHED TO FLOOR AND CEILING WITH FASTENERS
 - STEEL STUDS- 3-5/8" WIDE (MIN.), 1-1/4" LEGS, 3/8" RETURN, FORKED OF 25 MSG GALV. STEEL, MAX. SPACING 24" O.C.
 - GYP.SUM. WALLBOARD- 5/8" THICK, 4" WIDE, ATTACHED TO STEEL STUDS AND FLOOR AND CEILING TRACK WITH 1" LONG TYPE "S" SELF-TAPPING STEEL SCREWS, SPACING OF TRACKS 24" O.C. AND STAGGERED ON OPPOSITE SIDES OF THE ASSEMBLY.
 - BATTLS AND BLANKETS- MINERAL WOOL INSULATION, PARTIALLY OR COMPLETELY FILLING STUD CAVITY.
 - JOINT AND TAPE COMPOUND- VINYL, DRY OR PREMIUM JOINT COMPOUND, APPLIED IN TWO COATS TO JOINTS AND SCREW HEADS; PAPER TAPE, 2" WIDE, EMBEDDED IN NORMAL 3/2" THICK GYPSUM VENEER PLASTER MAY BE APPLIED TO THE ENTIRE SURFACE OF CLASSIFIED VENEER BASEBOARD. JOINT REINFORCED.



ONE HOUR FIRE WALL
N.T.S.

<p>2ND FLOOR BUILD-OUT</p> <p>K.B. KAUFMANN & CO., INC. OAK HARBOR SUBDIVISION SLIDELL, LOUISIANA</p>	<p>C.N.S. INVESTMENTS CORP.</p> <p>DAMMON ENGINEERING, INC. ARCHITECTS - ENGINEERS</p> <p>2000 OLD SPANISH TRAIL, STE 100 985-649-5832 SLIDELL, LA. 70458 DAMMONENGINEERING.COM</p>	<p>FILE:</p> <p>JOB NO. 1517B</p> <p>DATE: 10-18-05</p> <p>SCALE: AS NOTED</p> <p>SHEET</p> <p>A-1</p> <p>OF</p>
---	--	--