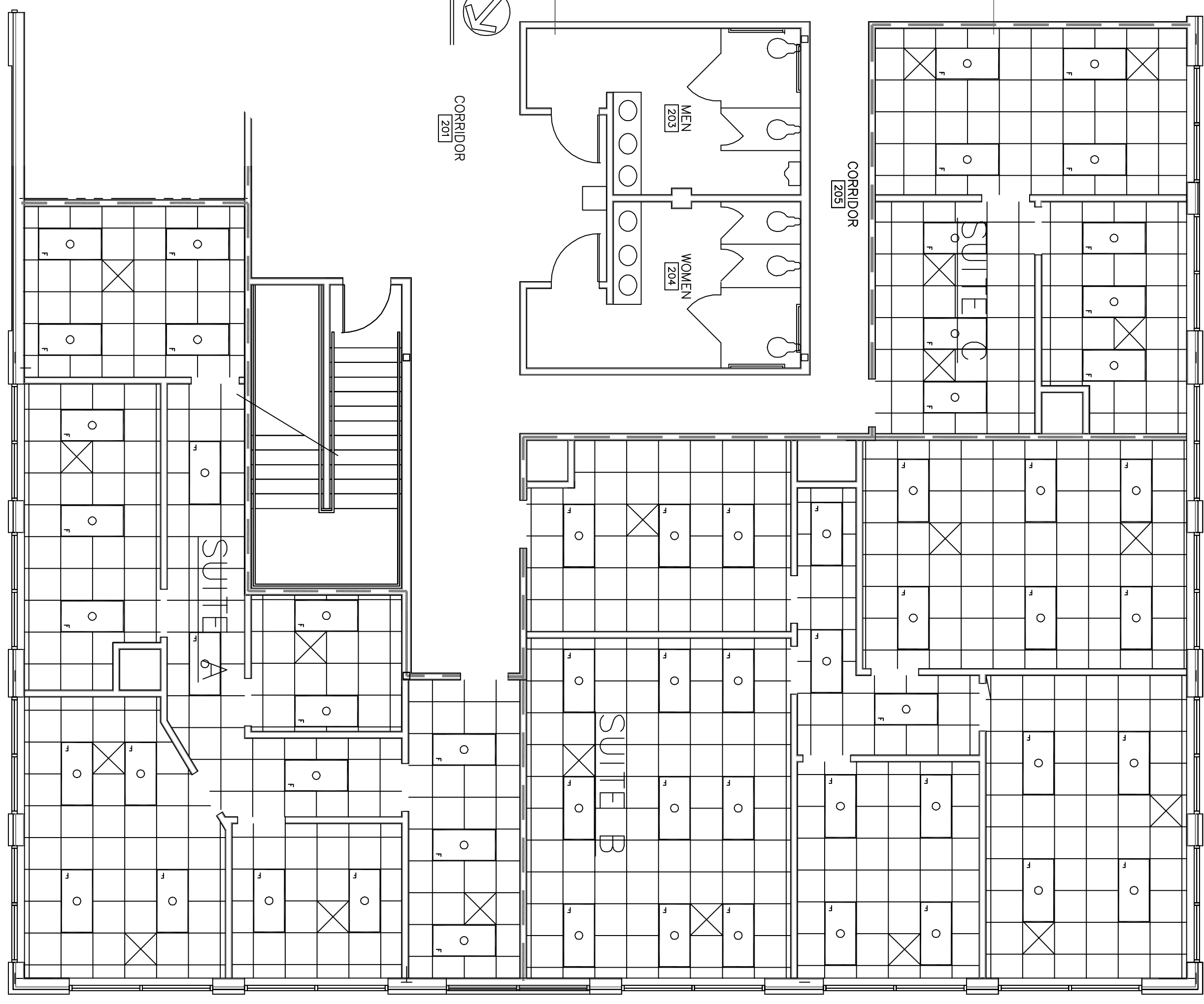


1 FLOOR PLAN-SECOND FLOOR
3/16"=1'-0"

THIS FLOOR FULLY SPRINKLED

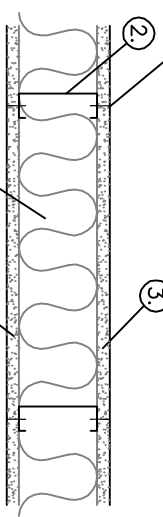
2 PARTIAL 2ND FLOOR PLAN REFLECTED CEILING
NOT TO SCALE



ROOM NAME	FLOOR	BASE	WALL	CEILING	REMARKS
OFFICES		VCT	VINYL BASE	CLG. HGT. 10'-0"	
		CONC. W/SEALER	CERAMIC TILE		
		CONCRETE	CERAMIC TILE		
		NONE	GYP.BD		
		GYP.BD. PAINTED			
		2'x2' SUSP. ACOUST.			

DOOR & HARDWARE SCHEDULE							
NO.	SIZE	TYPE	FRAME	HINGE	LOCK	ACCESS.	REMARKS
1	3/0x7/0	SOLID WOOD					
2	3/0x7/0	HOLLOW MTL.					20 MIN RATED
		STOREFRONT					
		STEEL					
		ALUMINUM					
		WOOD					
		DBL SWING					
		BUTT					
		PASSAGE					
		PRIVACY					
		DEADBOLT					
		KEYED HANDLE					
		PUSH PULL					
		THRESHOLD					
		WEATHERSTRIP					
		DOOR STOP					
		CLOSER					

- UL NOTES:
- FLOOR AND CEILING RUNNER- (NOT SHOWN) 25 MGS. MIN. GAL. V. STEEL, 1" HIGH, RETURN LEGS 3'-5/8" (MIN), ATTACHED TO FLOOR AND CEILING WITH FASTENERS AT 24" O.C.
 - STEEL STUDS- 1-1/4" LEGS, 1/8" RETURN, FORMED OF 25 MGS. GALV. STEEL, MAX. SPACING 24" O.C.
 - Gypsum Wallboard- 5/8" THICK, 4" WIDE, ATTACHED TO STEEL STUDS AND FLOOR AND CEILING TRACK WITH 1" LONG TYPE "S" SELF-TAPPING STEEL SCREWS SPACED 8" O.C. ALONG EDGES OF BOARD AND 16" O.C. IN FIELD. JOINTS TO BE STAGGERED ON OPPOSITE SIDES OF THE ASSEMBLY.
 - BATTS AND BLANKETS- MINERAL WOOL INSULATION, PARTIALLY OR COMPLETELY FILING STUD CAVITY.
 - JOINT AND TAPE COMPOUND- VENT, DRY OR PREMIUM JOINT COMPOUND, APPLIED IN TWO COATS TO JOINTS AND SCREWS. 2" WIDE TAPE TO BE APPLIED IN FIRST LAYER OF COMPOUND OVER ALL JOINTS, AS AN ALTERNATE, NOMINAL 3/32" THICK GYPSUM VENEER PLASTER MAY BE APPLIED TO REINFORCE.



ONE HOUR FIRE WALL
N.T.S.

2ND FLOOR BUILD-OUT
K.B. KAUFMANN & CO., INC.
OAK HARBOR SUBDIVISION
SLIDELL, LOUISIANA

C.N.S. INVESTMENTS CORP.
DAMMON ENGINEERING, INC.
ARCHITECTS — ENGINEERS
2000 OLD SPANISH TRAIL, STE 100 985-649-5832 SLIDELL, LA. 70458
DAMMONENGINEERING.COM

SCALE: AS NOTED
FILE: _____
JOB NO. 1517A
DATE: 06-27-05
SHEET
A-1
OF _____