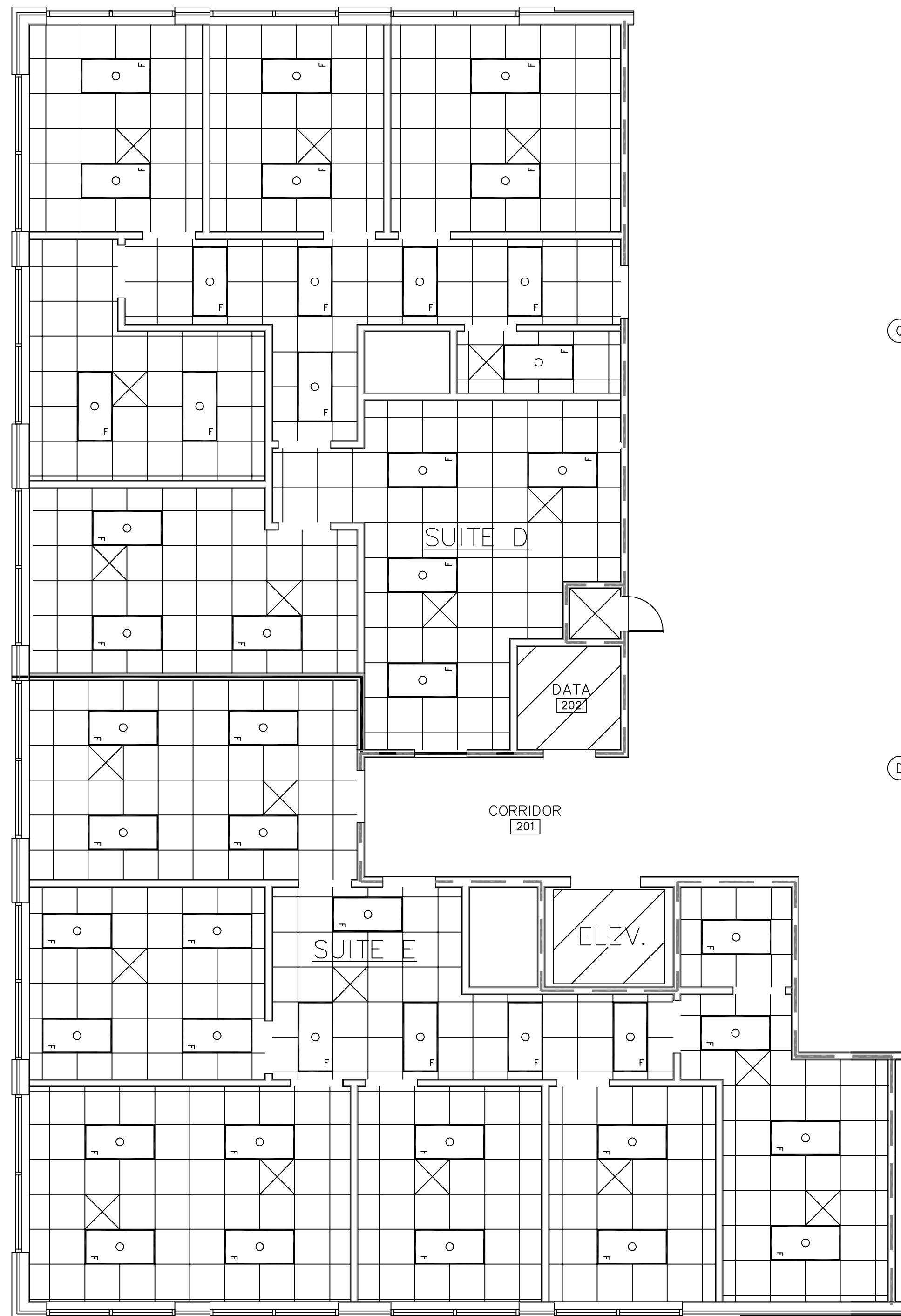
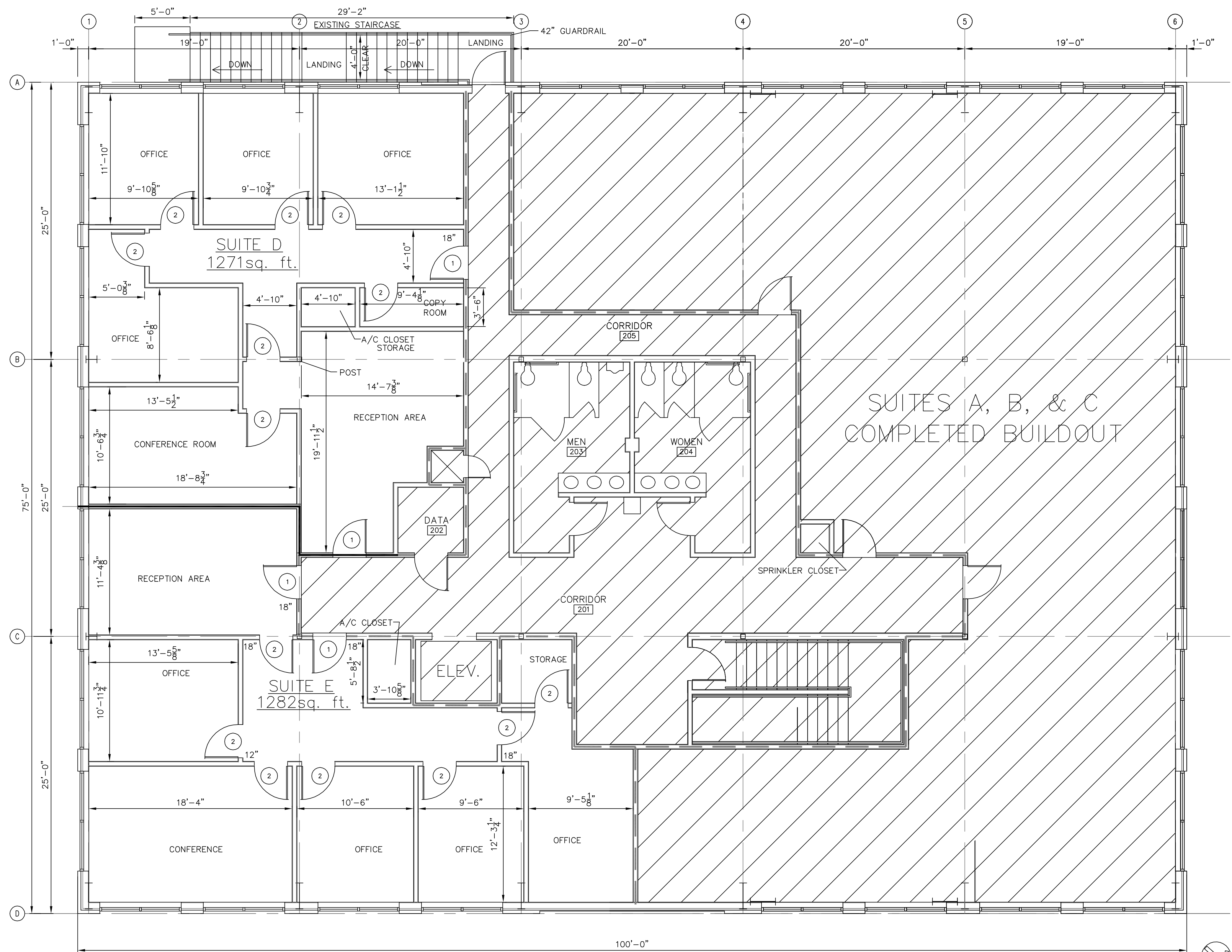


ROOM FINISH SCHEDULE					
NAME	FLOOR	BASE	WALL	CEILING	REMARKS
	VCT				
	CONC. W/SEALER				
	CERAMIC TILE				
	CONCRETE				
	VINYL BASE				
	CERAMIC TILE				
	NONE				
	GYP.BD				
	CERAMIC TILE				
				GYP.BD. PAINTED	
				2'x2' SUSP. ACoust.	
				CLG. HGT.	
OFFICES	●			●	10'-0"

DOOR & HARDWARE SCHEDULE							
NO.	SIZE	TYPE	FRAME	HINGE	LOCK	ACCESS.	REMARKS
1	3/0x7/0	SOLID WOOD	STEEL	DBL SWING	PASSAGE		
2	3/0x7/0	HOLLOW MTL.	ALUMINUM	BUTT	PRIVACY		20 MIN RATED
		STOREFRONT	WOOD		DEADBOLT		
					KEYED HANDLE		
					PUSH PULL		
					THRESHOLD		
					WEATHERSTRIP		
					DOOR STOP		
					CLOSER		



2 PARTIAL 2ND FLOOR PLAN REFLECTED CEILING  
NOT TO SCALE



1 FLOOR PLAN-SECOND FLOOR  
3/16"=1'-0"

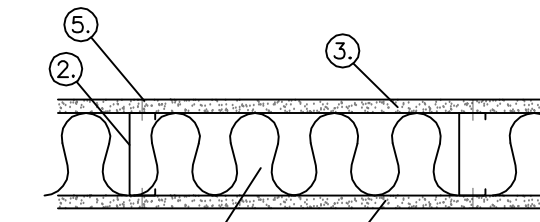
THIS FLOOR FULLY SPRINKLED

AREA BY USE

SUITE D = 1,271 SQ. FT.  
SUITE E = 1,282 SQ. FT.  
TOTAL = 2,553 SQ. FT.

UL NOTES:

- FLOOR AND CEILING RUNNER-**  
(NOT SHOWN) 25 MSG MIN. GALV. STEEL 1" HIGH, RETURN LEGS 3-5/8" (MIN.), ATTACHED TO FLOOR AND CEILING WITH FASTENERS AT 24" O.C.
- STEEL STUDS-**  
3-5/8" WIDE (MIN.), 1-1/4" LEGS, 3/8" RETURN, FORMED OF 25 MSG GALV. STEEL, MAX. SPACING 24" O.C.
- GYP. WALLBOARD-**  
5/8" THICK, 4" WIDE, ATTACHED TO STEEL STUDS AND FLOOR AND CEILING TRACK WITH 1" LONG TYPE "S" SELF-TAPPING STEEL SCREWS SPACED 8" O.C. ALONG EDGES OF BOARD AND 12" O.C. IN THE FIELD OF THE BOARD. JOINTS ORIENTED VERT. AND STAGGERED ON OPPOSITE SIDES OF THE ASSEMBLY.
- BATTS AND BLANKETS-**  
MINERAL WOOL INSULATION, PARTIALLY OR COMPLETELY FILLING STUD CAVITY.
- JOINT AND TAPE COMPOUND-**  
VINYL, DRY OR PREMIXED JOINT COMPOUND, APPLIED IN TWO COATS TO JOINTS AND SCREW HEADS; PAPER TAPE, 2" WIDE, EMBEDDED IN FIRST LAYER OF COMPOUND OVER ALL JOINTS. AS AN ALTERNATE NOMINAL 3/32" THICK GYPSUM VENEER PLASTER MAY BE APPLIED TO THE ENTIRE SURFACE OF CLASSIFIED VENEER BASEBOARD. JOINT REINFORCED.



ONE HOUR FIRE WALL  
N.T.S.

2ND FLOOR BUILD-OUT

K.B. KAUFMANN & CO., INC.  
OAK HARBOR SUBDIVISION  
SLIDELL, LOUISIANA

C.N.S. INVESTMENTS CORP.

**DAMMON ENGINEERING, INC.**  
ARCHITECTS - ENGINEERS  
2000 OLD SPANISH TRAIL, STE 100 985-649-5832  
SLIDELL, LA. 70458  
DAMMONENGINEERING.COM

SCALE: AS NOTED

FILE:

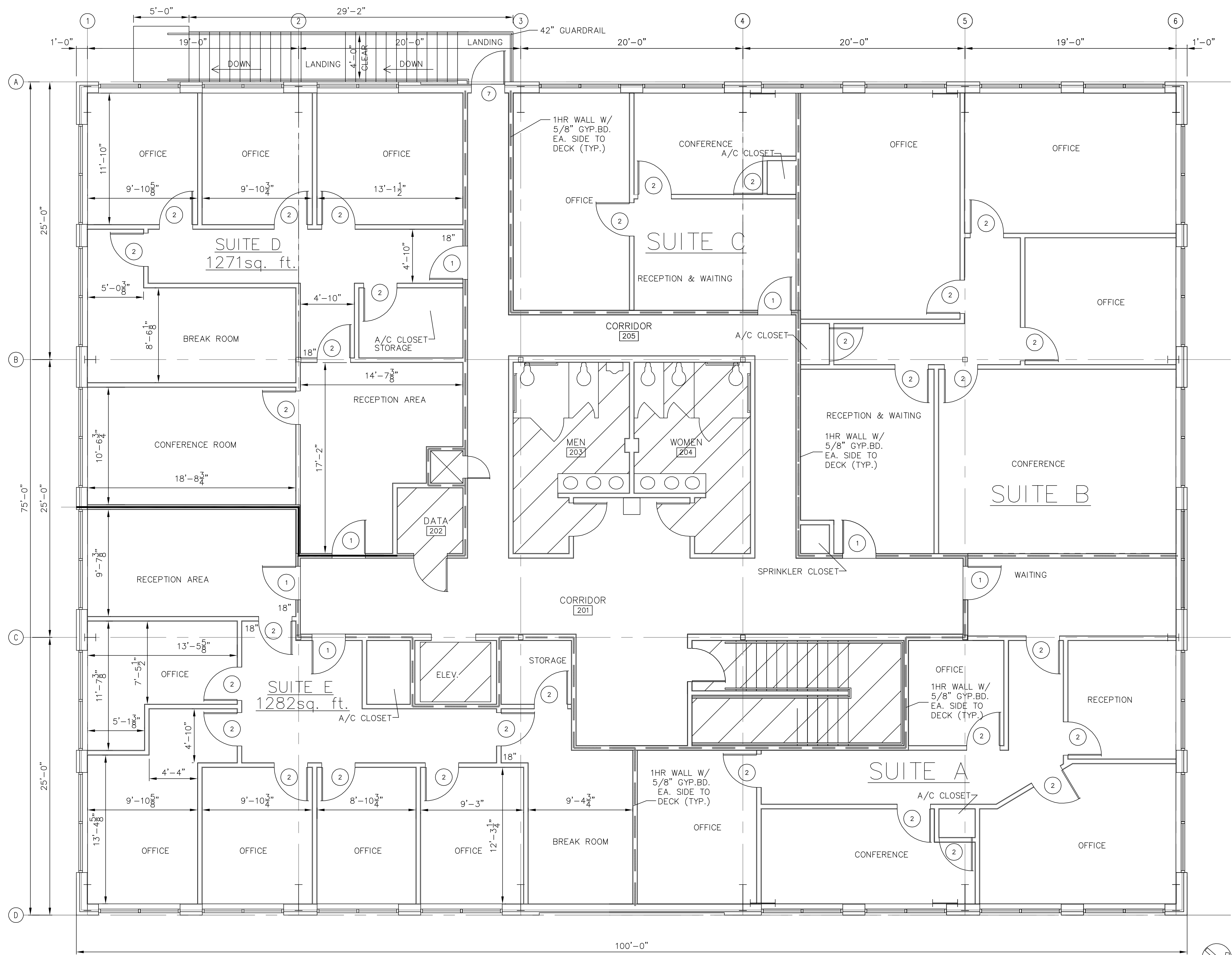
JOB NO. 1517B

DATE: 10-18-05

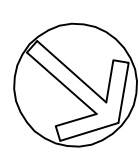
SHEET

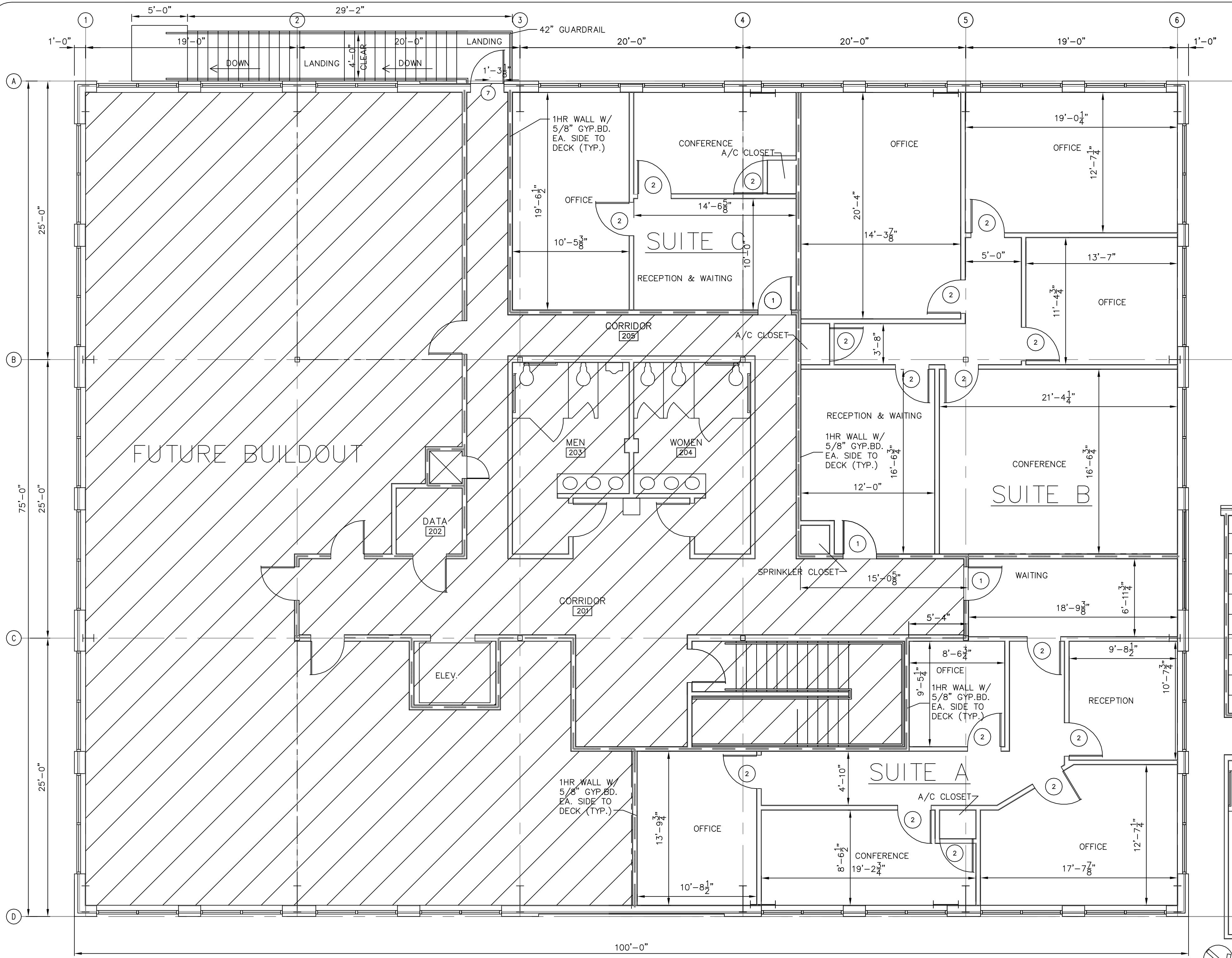
A-1

OF



1 FLOOR PLAN-SECOND FLOOR  
 A-1 3/16"=1'-0"



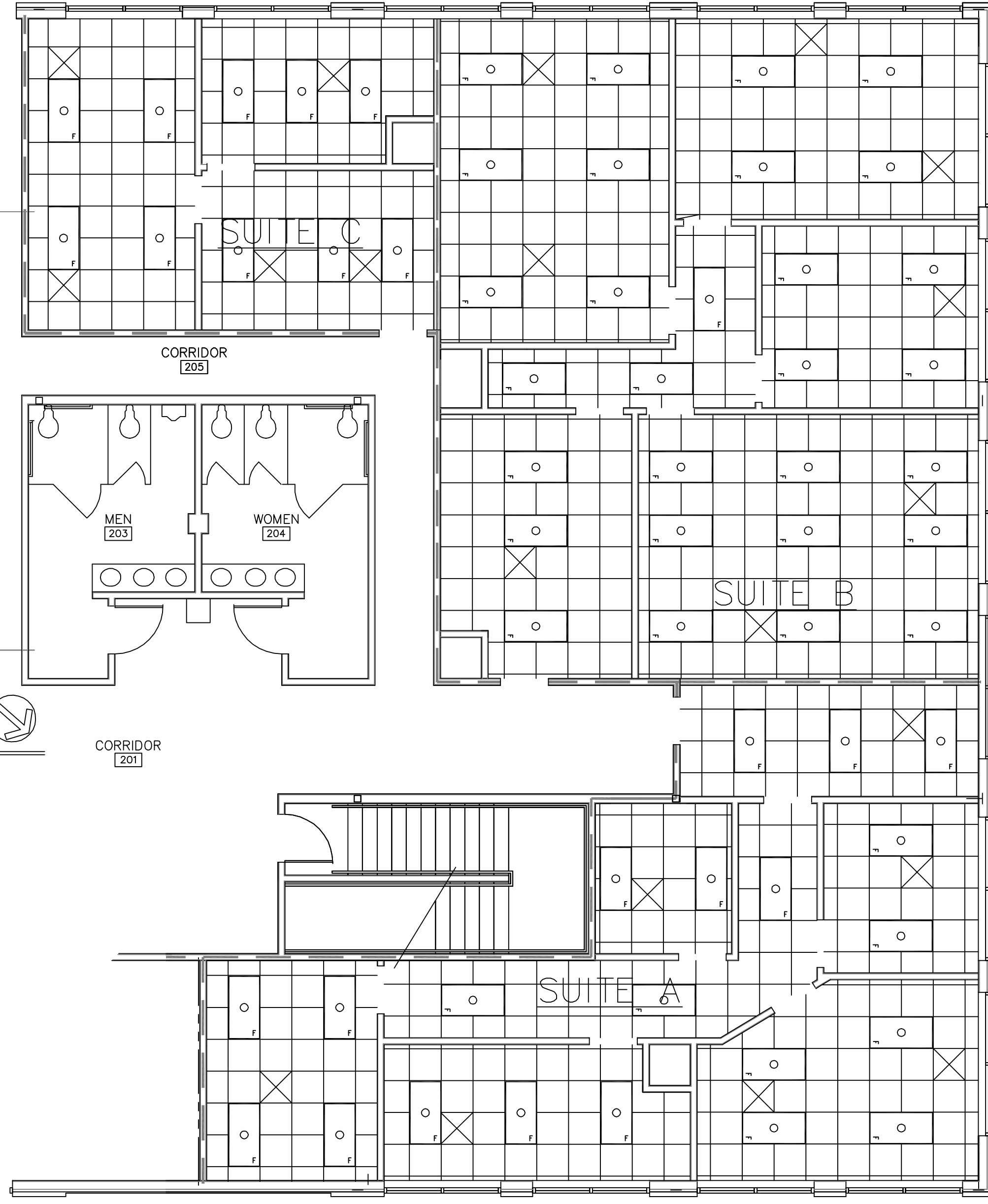


### ROOM FINISH SCHEDULE

NAME	FLOOR	BASE	WALL	CEILING	REMARKS
OFFICES	●	●	●	●	CLG. HGT. 10'-0"

### DOOR & HARDWARE SCHEDULE

NO.	SIZE	TYPE	FRAME	HINGE	LOCK	ACCESS.	REMARKS
1	3/0x7/0	●	●	●	●	●	20 MIN RATED
2	3/0x7/0	●	●	●	●	●	



**1** FLOOR PLAN-SECOND FLOOR  
3/16"=1'-0"

**UL NOTES:**

- FLOOR AND CEILING RUNNER-**  
(NOT SHOWN) 25 MSG MIN. GALV. STEEL 1" HIGH, RETURN LEGS 3-5/8" (MIN), ATTACHED TO FLOOR AND CEILING WITH FASTENERS AT 24" O.C.
- STEEL STUDS-**  
3-5/8" WIDE (MIN.), 1-1/4" LEGS, 3/8" RETURN, FORMED OF 25 MSG GALV. STEEL, MAX. SPACING 24" O.C.
- GYP. WALLBOARD-**  
5/8" THICK, 4" WIDE, ATTACHED TO STEEL STUDS AND FLOOR AND CEILING TRACK WITH 1" LONG TYPE "S" SELF-TAPPING STEEL SCREWS SPACED 8" O.C. ALONG EDGES OF BOARD AND 12" O.C. IN THE FIELD OF THE BOARD. JOINTS ORIENTED VERT. AND STAGGERED ON OPPOSITE SIDES OF THE ASSEMBLY.
- BATTS AND BLANKETS-**  
MINERAL WOOL INSULATION, PARTIALLY OR COMPLETELY FILLING STUD CAVITY.
- JOINT AND TAPE COMPOUND-**  
VINYL DRY OR PREMIXED JOINT COMPOUND, APPLIED IN TWO COATS TO JOINTS AND SCREW HEADS; PAPER TAPE, 2" WIDE, EMBEDDED IN FIRST LAYER OF COMPOUND OVER ALL JOINTS. AS AN ALTERNATE, NOMINAL 3/32" THICK GYPSUM VENEER PLASTER MAY BE APPLIED TO THE ENTIRE SURFACE OF CLASSIFIED VENEER BASEBOARD. JOINT REINFORCED.

**ONE HOUR FIRE WALL**  
N.T.S.

THIS FLOOR FULLY SPRINKLED

**2** PARTIAL 2ND FLOOR PLAN REFLECTED CEILING  
NOT TO SCALE

2ND FLOOR BUILD-OUT

K.B. KAUFMANN & CO., INC.  
OAK HARBOR SUBDIVISION  
SLIDELL, LOUISIANA

C.N.S. INVESTMENTS CORP.

**DAMMON ENGINEERING, INC.**  
ARCHITECTS - ENGINEERS  
2000 OLD SPANISH TRAIL, SUITE 100 985-649-5832  
SLIDELL, LA. 70458  
DAMMONENGINEERING.COM

SCALE: AS NOTED

FILE:

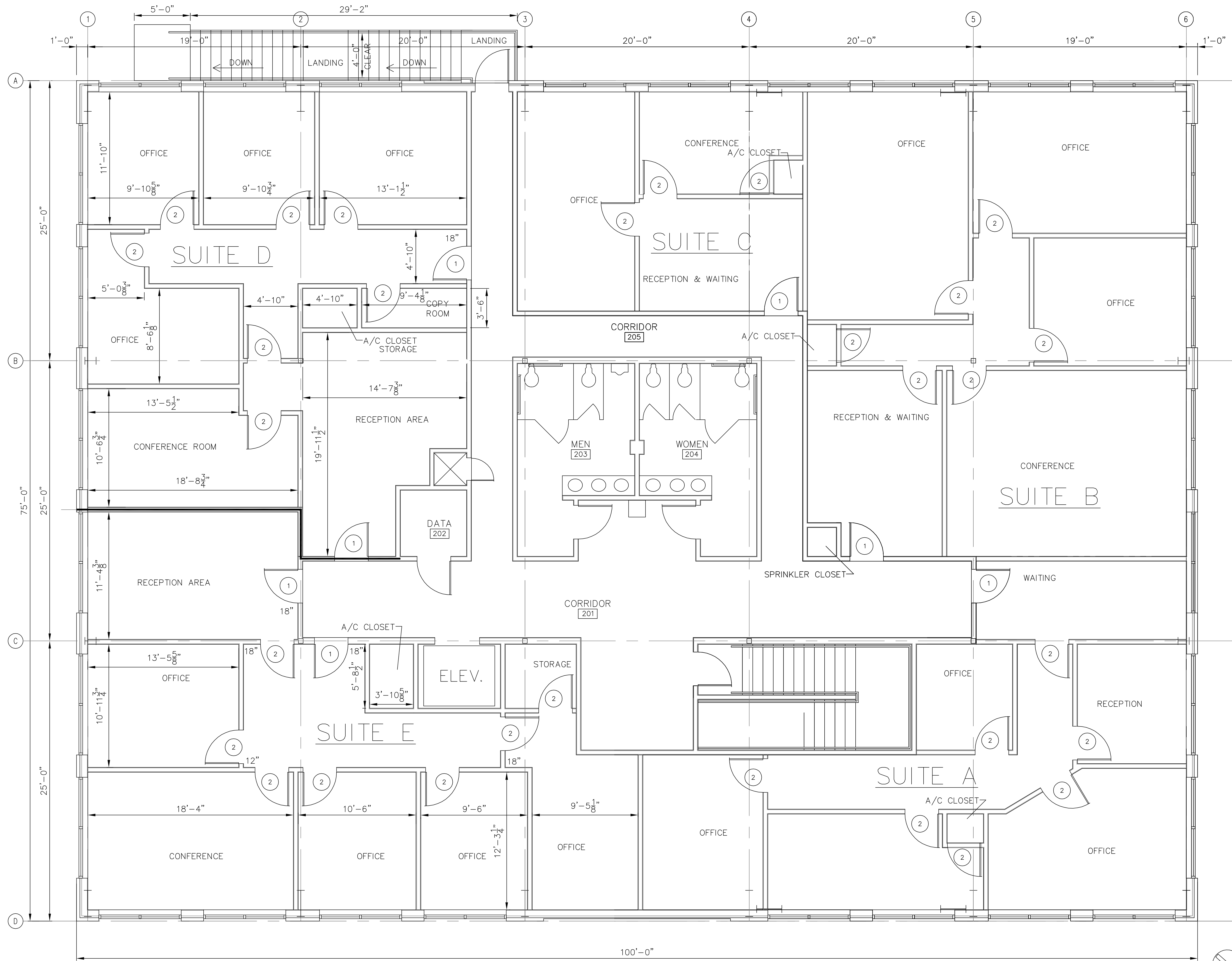
JOB NO. 1517A

DATE: 06-27-05

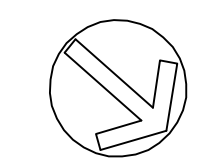
SHEET

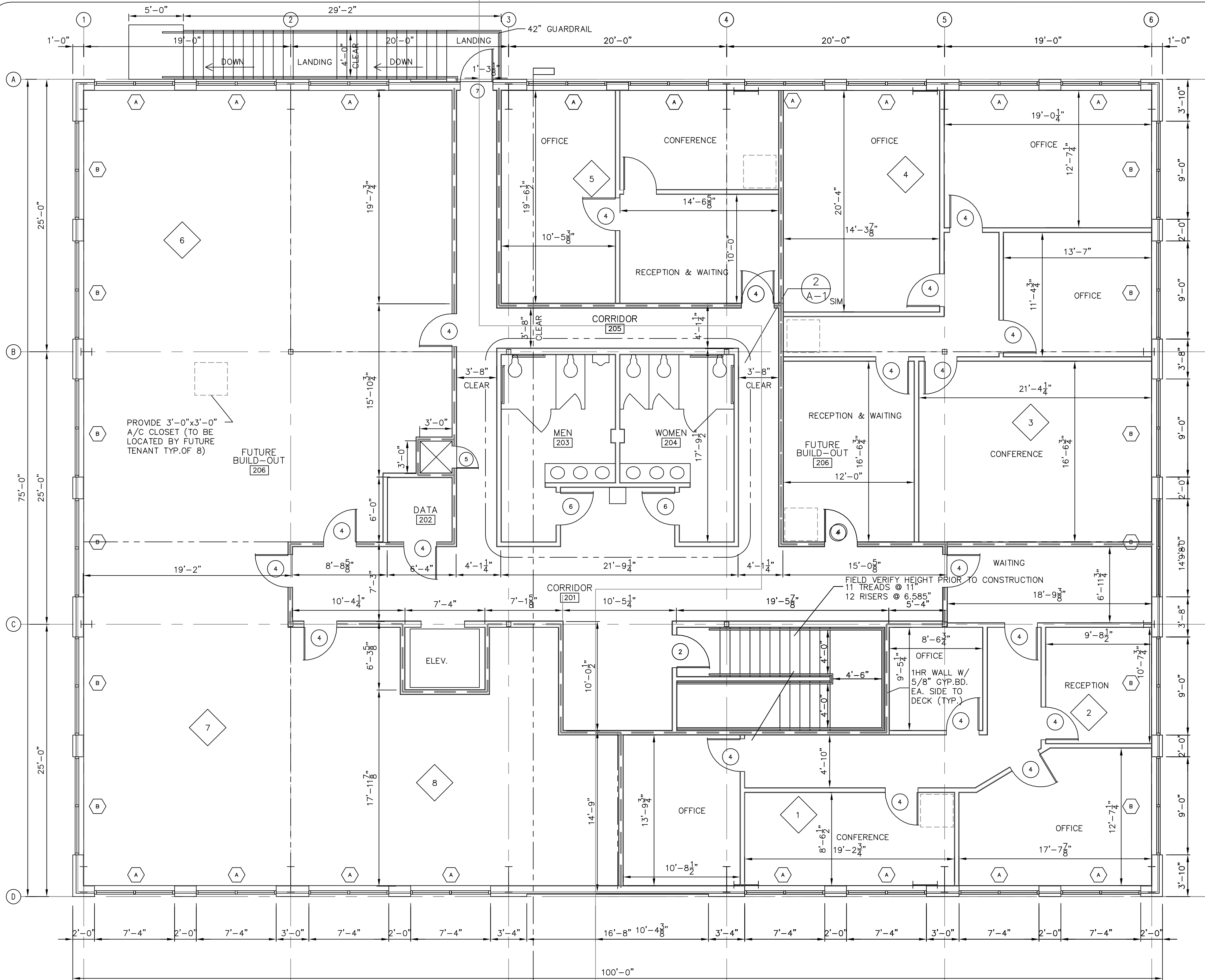
A-1

OF



1 FLOOR PLAN-SECOND FLOOR  
 A-1 3/16"=1'-0"





1 FLOOR PLAN-SECOND FLOOR  
3/16"=1'-0"

### ROOM FINISH SCHEDULE

NAME	FLOOR	BASE	WALL	CEILING	REMARKS
100 ENTRANCE	VCT	CONC. W/SEALER	CERAMIC TILE	CERAMIC TILE	CLG. HGT.
101 CORRIDOR		CONCRETE	VINYL BASE	CERAMIC TILE	
102 ELEVATOR			NONE	GYP.BD.	
103 HALL			CERAMIC TILE	GYP.BD. PAINTED	
104 ELEV. EQUIP.				2'x2' SUSP. ACCOUST.	
105 DATA					
106 MEN					
107 WOMEN					
108 CORRIDOR					
109 FUTURE BUILD-OUT					
110 STAIRS					
201 CORRIDOR					
202 DATA					
203 MEN					
204 WOMEN					
205 CORRIDOR					
206 FUTURE BUILD-OUT					

### DOOR & HARDWARE SCHEDULE

NO.	SIZE	TYPE		FRAME	HINGE	LOCK	ACCESS.	REMARKS										
		SOLID WOOD	HOLLOW MTL.	STEEL	ALUMINUM	WOOD	DBL SWING		BUTT	PASSAGE	PRIVACY	DEADBOLT	KEYED HANDLE	PUSH PULL	THRESHOLD	WEATHERSTRIP	DOOR STOP	CLOSER
1	PR 3/0x6/8																	
2	3/0x6/8																	1-HR
3	3/0x6/8																	VENTED
4	3/0x6/8																	1-HR
5	2/0x4/0																	
6	3/0x6/8																	
7	3/0x6/8																	

### WINDOW SCHEDULE

WINDOW	TYPE		FRAME	GLASS	LITES	ACCESS.	REMARKS										
	FIXED	VERT. SLIDE	HORIZ. SLIDE	STEEL	STEEL	ALUM.		WOOD	TINTED	PLAIN	INSULATED	2/2	NONE	SCREEN	SHUTTER	NONE	ALARM
(A) 7/4x6/0																	
(B) 9/0x6/0																	

FLOOR PLAN-2ND FLOOR  
 K.B. KAUFMANN & CO., INC.  
 OAK HARBOR SUBDIVISION  
 SLIDELL, LOUISIANA

C.N.S. INVESTMENTS CORP.  
**DAMMON ENGINEERING, INC.**  
 ARCHITECTS - ENGINEERS  
 2000 OLD SPANISH TRAIL, SUITE 100 985-649-5832  
 SLIDELL, LA. 70458  
 DAMMONENGINEERING.COM

SCALE: AS NOTED  
 FILE:  
 JOB NO.  
 DATE: 8-28-03  
 SHEET  
**A-2**  
 OF