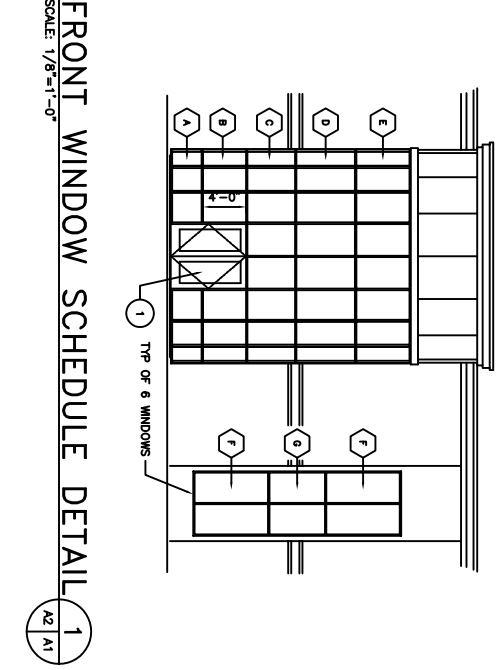


NAME	FLOOR	BASE	WALL	CEILING	REMARKS
ENTRY	CARPET				
TRAINING ROOM	CONC.				
RESTROOM	TILE				
OFFICE	WOOD BASE				
PASSAGE	CERAMIC TILE				
KITCHEN					
H/C MEN'S REST.					
H/C WOMEN'S REST.					
H/C REST.					
RECEPTION					
SALES					
ENGINEERING					
SHOP MGR. / PURCH.					
A/C ROOMS					
STAIRWAYS					
ACCOUNTING					
ACCOUNT MGR.					
MEN'S REST.					
WOMEN'S REST.					
VOICE PRES. 1					
FILES					
BOARD ROOM					
VOICE PRES. 2					
PRESIDENT					
COPY NOOK					
WAREHOUSE					

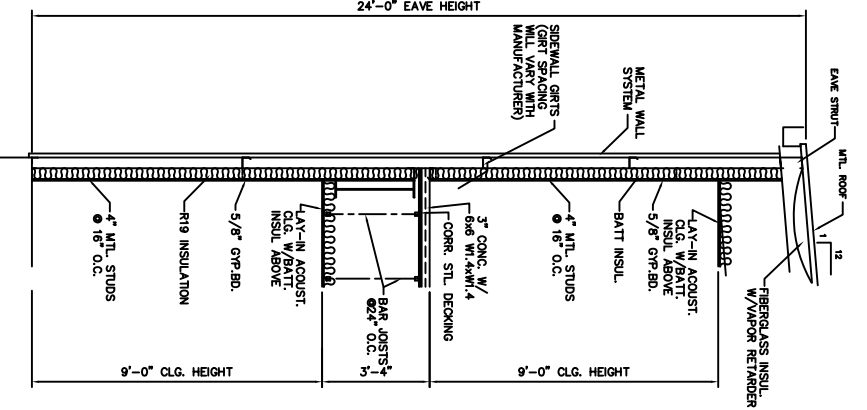
NO.	SIZE	TYPE	FRAME	HINGE	LOCK	ACCESSORIES	RATINGS	REMARKS
1	PR 3/0x7/0	RAISED PNL. MAS.						EXTERIOR
2	3/0x7/0	HOLLOW METAL						EXTERIOR
3	20x20"	ALUM.						EXTERIOR
4	3/0x7/0	VERT. ROLLING						EXTERIOR
5	3/0x7/0	FOLDING						EXTERIOR
6	1/8x7/0	STEEL						EXTERIOR
7	2/0x7/0	ALUMINUM						EXTERIOR
8	PR 3/0x7/0	WOOD						EXTERIOR
9	4/0x7/0	CASED OPENING						EXTERIOR
10	3/0x6/0	DBL SWING						EXTERIOR
11	3/0x6/0	BUTT						EXTERIOR
12	3/0x7/0	BURGLERPRF						EXTERIOR

MK	SIZE	TYPE			FRAME			GLASS			LITES			ACCESS.			REMARKS			
		FIXED	VERT. SLIDE	HORIZ. SLIDE	STEEL	VINYL	WOOD	TINTED	PLAIN	INSULATED	WIRED GLASS	2/2	15 LITES	9 LITES	NONE	SCREEN		SHUTTER	NONE	ALARM
A	3'-0"x4'-8"	●	●	●	●	●	●	●	●	●	●	●	●	●	●	●	●	●	●	MAX. U-FACTOR .75
B	3'-0"x4'-8"	●	●	●	●	●	●	●	●	●	●	●	●	●	●	●	●	●	●	MAX. U-FACTOR .75
C	3'-0"x4'-8"	●	●	●	●	●	●	●	●	●	●	●	●	●	●	●	●	●	●	MAX. U-FACTOR .75
D	3'-0"x4'-8"	●	●	●	●	●	●	●	●	●	●	●	●	●	●	●	●	●	●	MAX. U-FACTOR .75
E	3'-0"x4'-8"	●	●	●	●	●	●	●	●	●	●	●	●	●	●	●	●	●	●	MAX. U-FACTOR .75
F	3'-0"x4'-8"	●	●	●	●	●	●	●	●	●	●	●	●	●	●	●	●	●	●	MAX. U-FACTOR .75
G	3'-0"x4'-8"	●	●	●	●	●	●	●	●	●	●	●	●	●	●	●	●	●	●	MAX. U-FACTOR .75
H	3'-0"x4'-8"	●	●	●	●	●	●	●	●	●	●	●	●	●	●	●	●	●	●	MAX. U-FACTOR .75
I	3'-0"x4'-8"	●	●	●	●	●	●	●	●	●	●	●	●	●	●	●	●	●	●	MAX. U-FACTOR .75
J	3'-0"x4'-8"	●	●	●	●	●	●	●	●	●	●	●	●	●	●	●	●	●	●	MAX. U-FACTOR .75
K	3'-0"x4'-8"	●	●	●	●	●	●	●	●	●	●	●	●	●	●	●	●	●	●	MAX. U-FACTOR .75
L	3'-0"x4'-8"	●	●	●	●	●	●	●	●	●	●	●	●	●	●	●	●	●	●	MAX. U-FACTOR .75

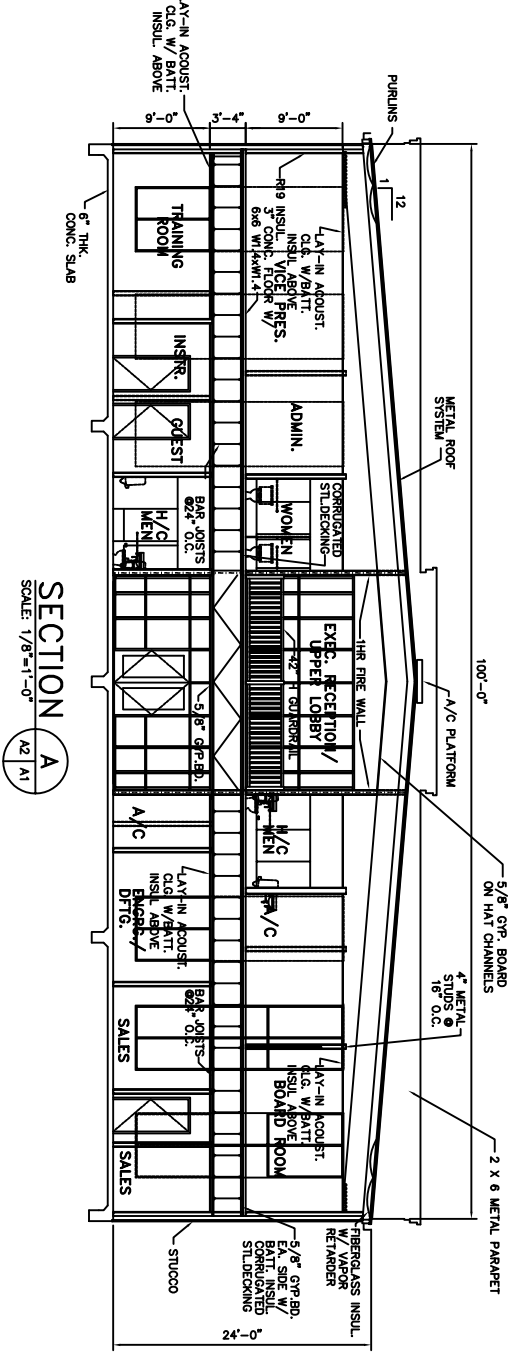
4x4 - 45 MINUTE RATED WINDOWS
4x4 - 90 MINUTE RATED WINDOWS



FRONT WINDOW SCHEDULE DETAIL
SCALE: 1/8"=1'-0"



EXTERIOR WALL SECTION
SCALE: 3/8"=1'-0"



SECTION A
SCALE: 1/8"=1'-0"

GENERAL NOTES

- HANDICAP UNITS - TOILETS SHALL CONFORM TO THE FOLLOWING:
- LAVATORIES SHALL BE MOUNTED WITH A CLEARANCE OF AT LEAST 29" FROM THE FLOOR TO THE BOTTOM OF THE APRON, AND SHALL HAVE CLEARANCE BELOW FOR HANDICAP KNEE AND TOE. RIM OF LAVATORY SHALL BE NOT MORE THAN 34" HIGH.
- HOT WATER AND DRAIN PIPES SHALL BE INSULATED OR COVERED.
- INDOORS SHALL BE LEAFER ACTIVATED.
- INDOORS SHALL BE LEAFER ACTIVATED.
- HANDICAP UNITS SHALL BE LEAFER ACTIVATED.
- HANDICAP UNITS SHALL COMPLY WITH THE PROVISIONS OF THE AMERICANS WITH DISABILITIES ACT.
- GRAB BARS AT TOILET - REAR 36", 33"-36" ABOVE FLOOR, SIDE 42" 33"-36" ABOVE FLOOR.
- WATER CLOSETS SHALL BE LOCATED WITH CENTER LINE 18" FROM SIDE WALL WITH BARS.
- INSULATION AND INSULATION ASSEMBLIES SHALL MEET THE REQUIREMENTS OF SECTION 716, INTERNATIONAL BUILDING CODE, 2000.
- EXPOSED & CONCEALED INSULATION SHALL HAVE A FLAME SPREAD OF NOT MORE THAN 25 & A SMOKE DEVELOPED INDEX OF NOT MORE THAN 450.
- FRAMING SHALL COMPLY WITH IBC 718.2.1.
- PROVIDE 5/8" LANDING OUTSIDE EXTERIOR DOORS LEVEL WITH THE FLOOR. THRESHOLDS SHALL BE NOT MORE THAN 1/2" IN HEIGHT AND SHALL BE RECESSED UNDER FLOOR SURFACES SHALL BE NON-SLIP.
- DIMENSIONS ARE TO CENTER LINE OR FACE OF STUDS, CENTER LINES OF COLUMNS OR FACE OF VINYL.
- CONTRACTOR TO VERIFY ALL SITE CONDITIONS AND BUILDING LOCATION PRIOR TO CONSTRUCTION & VERIFY ALL DIMENSIONS.
- MATERIALS SHALL BE NEW AND U.L. LISTED.
- NO WORK SHALL BE CONCEALED UNTIL APPROVED BY LOCAL INSPECTORS.
- CONSTRUCTION SHALL COMPLY WITH ALL PARISH, STATE AND LOCAL CODES.
- CONTRACTOR SHALL GUARANTEE WORK FOR ONE YEAR.
- CONTRACTOR SHALL FURNISH WATER AND POWER FROM EXISTING SOURCES.
- EXTERIOR CAULKING SHALL BE THICKY CAULK.
- PAINT GRADE TO BE SHERWIN WILLIAMS OR EQUIVALENT. ALL WORK TO RECEIVE 3 COATS. COLOR SELECTION BY OWNER.
- PROVIDE CLEAN-UP ON A REGULAR BASIS. NO TRASH STORED IN BUILDING.
- ALL BATT INSULATION SHALL HAVE A CLASS "X" (0-25) FLAME SPREAD IN COMPLIANCE WITH APPLICABLE CODE.
- USE 6 STUDS AT ALL PLUMBING WALLS.
- PROVIDE GALV. METAL PAN WITH DRAIN AT WATER HEATER LOCATION.
- ALL CORNERS SHALL BE PROPERLY BRACED FOR WIND LOADS. A 48" SHEATHING SHALL BE PROVIDED EVERY 20 FEET OF WALL LENGTH.
- FLOORING SHALL BE NON-SLIP.
- LOOKS ON DOORS IN MEANS OF EGRESS SHALL NOT REQUIRE THE USE OF A KEY INTERIOR SIDE, SPECIAL DEVICE OR SPECIAL KNOWLEDGE TO OPEN IN THE DIRECTION OF EGRESS. ALL DOORS SHALL HAVE LEVER TYPE HANDLES.
- INTERIOR WALLS AND CEILING SHALL HAVE A FLAME SPREAD OF 0-200 EXCEPT IN CORRIDORS WHICH SHALL HAVE A FLAME SPREAD OF 0-75 AND A SMOKE DEVELOPMENT RATING OF 0-450.
- ALL WORK SHALL COMPLY WITH THE LATEST EDITION OF ALL LOCAL, STATE AND NATIONAL CODES THAT COVER THE SECTION OF WORK BEING PERFORMED.
- PROVIDE PORTABLE FIRE EXTINGUISHERS IN ACCORDANCE WITH NFPA 10.
- SEE APPENDIX "E" OF NFPA 10 FOR DISTRIBUTION OF EXTINGUISHERS.
- ALL FIRE WALLS SHALL EXTEND THRU TO ROOF SHEATHING & SEALED WITH APPROVED FIRE CAULK.
- ALL ELECTRICAL, MECHANICAL & PLUMBING PERMITTING FIRE PARTITIONS SHALL BE INSTALLED IN ACCORDANCE WITH THE NATIONAL FIRE PROTECTION ASSOCIATION (NFPA) WITH A MATERIAL CAPABLE OF PREVENTING THE PASSAGE OF FLAMES AND HOT GASES WHEN TESTED IN ACCORDANCE WITH ASTM-E914.

OFFICE/WAREHOUSE
DAMMON ENGINEERING, INC.
 1095 FLORIDA AVENUE 985-649-5832 SLIDELL, LA. 70458
 DAMMONENGINEERING.COM

SCHEDULES AND DETAILS
 PLATFORM CRANE SERVICE
 DOSS DRIVE
 SLIDELL, LOUISIANA

SCALE: AS NOTED
 FILE:
 JOB NO. 1655
 DATE: 04-07-05
 SHEET
A-2
 OF