

GA FILE NO. WP 1521 GENERIC

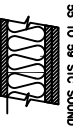
SCALE: 1/8"=1'-0"

GYPSUM WALLBOARD, STEEL STUDS

BASE LAYER 5/8" TYPE X GYPSUM WALLBOARD OR GYPSUM VENEER APPLIED PARALLEL TO EACH SIDE OF 3/4" STEEL STUDS WITH 1" TYPE S DRYWALL SCREWS 24" O.C. FACE LAYER APPLIED PARALLEL TO EACH SIDE WITH 1 5/8" TYPE S DRYWALL SCREWS 12" O.C.



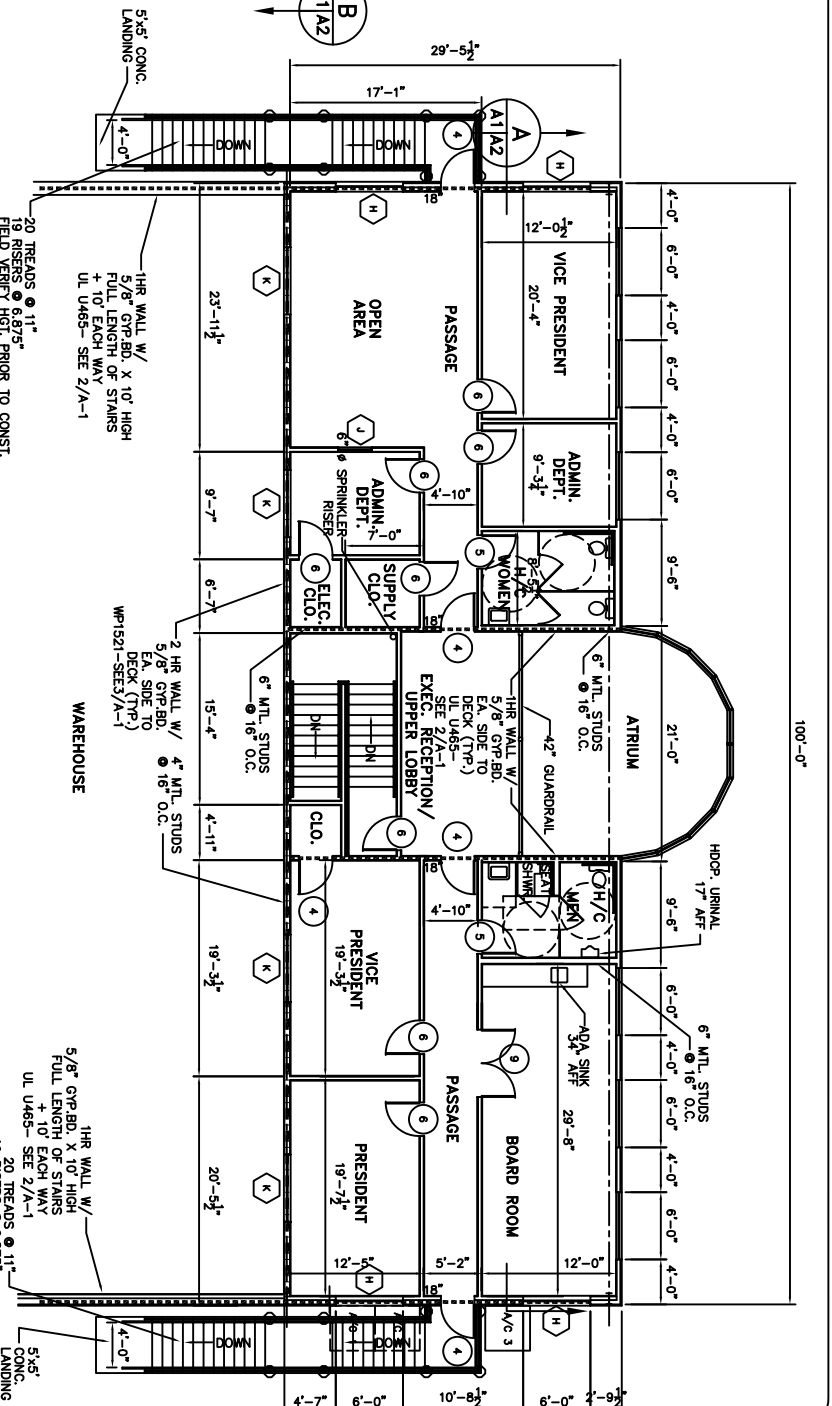
55 TO 59 STC SOUND



5 5/8" GYP BD. 1" TYPE S DRYWALL SCREWS 24" O.C. FACE LAYER APPLIED PARALLEL TO EACH SIDE WITH 1 5/8" TYPE S DRYWALL SCREWS 12" O.C.

JOINTS STAGGERED 24" FROM LAYER AND SIZE SOUND TESTED WITH 3 1/2" GLASS FIBER FRCTION FIT IN STUD SPACE (MJD)

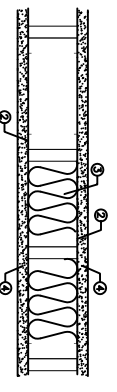
2 HR. FIRE WALL (WP 1521) 3



SCALE: 1/8"=1'-0"

LEGEND	
1HR WALL - UL465
2HR WALL - WP 1521	—————
2HR WALL - WP 1521-3	—————

DESIGN NO. U465 NONBEARING WALL RATING- 1 HR.



- FLOOR AND CEILING RUNNERS- (NOT SHOWN)- CHANNEL SHAPED RUNNERS, 3/8 IN. WIDE (MIN.) 1 1/4 IN. LEGS FORMED FROM MIN. NO. 25 MSG (MIN. NO. 20 MSG WHEN ITEM 4C IS USED) GALV STEEL, ATTACHED TO FLOOR AND CEILING WITH FASTENERS SPACED 24 IN. O.C. MAX.
- STEEL STUDS- CHANNEL SHAPED, 3 5/8 IN. WIDE (MIN.), 1 1/4 IN. LEGS, 3/8 IN. FOLDED BACK RETURNS FORMED FROM MIN. NO. 25 MSG (MIN. NO. 20 MSG WHEN ITEM 4A IS USED) GALV STEEL SPACED 24 IN. O.C. MAX.
- BATTS AND BLANKETS- (OPTIONAL)- MINERAL WOOL OR GLASS FIBER BATTS PARTIALLY OR COMPLETELY FILLING STUD CAVITY.
- FIBER STRATED- AS AN ALTERNATE TO BATTS AND BLANKETS (ITEM 3), SPRAY ON FIBER STRATED INSULATION SHALL BE APPLIED TO INTERIOR SURFACES OF STUD CAVITY COMPLETELY FILL THE ENCLOSED CAVITY IN ACCORDANCE WITH THE APPLICATION INSTRUCTIONS SUPPLIED WITH THE PRODUCT. NOMINAL DRY DENSITY OF 3.0 LB/FT³. US GREENFIBER L L C. CELLULASE STABILIZED CELLULOSE INSULATION.
- SPRAY APPLIED CELLULOSE INSULATION MATERIAL- THE FIBER IS APPLIED WITH WATER TO INTERIOR SURFACES IN ACCORDANCE WITH THE APPLICATION INSTRUCTIONS SUPPLIED WITH THE PRODUCT. NOMINAL DRY DENSITY OF 4.7 POUNDS PER CUBIC FOOT.
- GYPSUM BOARD- 5/8 IN. THICK, 4 FT. WIDE, ATTACHED TO STEEL STUDS AND FLOOR AND CEILING TRACK WITH 1 IN. LONG, TYPE S STEEL SCREWS SPACED 8 IN. O.C. ALONG EDGES OF BOARD AND 12 IN. O.C. IN THE FIELD OF THE BOARD. JOINTS ORIENTED VERTICALLY AND STAGGERED ON OPPOSITE SIDES OF THE ASSEMBLY. WHEN ATTACHED TO ATTACHED TO FLOORING CHANNELS WITH 1 IN. LONG, TYPE S STEEL SCREWS SPACED 12 IN. O.C.
- AMERICAN GYPSUM CO.- TYPES AG-C, AGX-C, BRB OF AMERICA, INC.- TYPE 1, ERG, PRO ROC TYPE X, PRO ROC TYPE C, CANADIAN GYPSUM COMPANY- TYPES AR, C, P-AR, P-X2, PC-AR, SCX, SHX, G-P GYPSUM CORP. SUB OF GEORGIA-PACIFIC CORP.- TYPES 5, 9 C, DAP, DD, DA, DGG, DS, GPSS6.
- LARGE NORTH AMERICA, INC.- TYPES LGFC2, LGFC2A, LGFC6A, LGFC6, LGFC-C/A.
- NATIONAL GYPSUM CO.- TYPES FSK-C, FSK-G, FSW-C, FSW-G, FSW.
- NORFOLK GYPSUM CO.- TYPE SC-C.
- SLIM GYPSUM INDUSTRY CO. LTD.- TYPE EX-1.
- STANDARD GYPSUM L L C.- TYPE SG-C.
- TEMPLE-INLAND FOREST PRODUCTS CORP.- TYPE TG-C.
- UNITED STATES GYPSUM CO.- TYPE AR, C FRX-G, P-AR, P-X2, PC-AR, SCX, SHX, WRC OR WRX.
- WESTROCK, INC.- TYPE WESTROCK F-ROK OR ABUSE-RESISTANT.

- 4A. GYPSUM BOARD- (AS AN ALTERNATE TO ITEM 4)- NOM 5/8 THICK GYPSUM PANELS WITH BEVELLED SQUARE OR TAPERED EDGES, APPLIED VERTICALLY OR HORIZONTALLY. VERTICAL JOINTS CENTERED OVER STUDS AND STAGGERED ONE STUD CAVITY ON OPPOSITE SIDES OF STUDS. HORIZONTAL JOINTS AND HORIZONTAL BUTT JOINTS ON OPPOSITE SIDES OF STUDS NEED NOT BE STAGGERED OR BACKED. PANELS ATTACHED TO STEEL STUDS AND FLOOR RUNNERS WITH 1 IN. LONG TYPE S STEEL SCREWS SPACED 8 IN. O.C. ALONG VERTICAL AND BOTTOM EDGES AND 12 IN. O.C. CANADIAN GYPSUM COMPANY- TYPES AR, C FRX-G, P-AR, P-X2, PC-AR, SCX, SHX, WRC OR WRX. UNITED STATES GYPSUM CO.- TYPE AR, C FRX-G, P-AR, P-X2, PC-AR, SCX, SHX, WRC OR WRX.
- 4B. GYPSUM BOARD- (AS AN ALTERNATE TO ITEMS 4, 4A AND 4B)- 5/8 IN. THICK GYPSUM PANELS INSTALLED AS DESCRIBED IN ITEM 4A WITH SCREW LENGTH INCREASED TO 1 1/4 IN.
- 4C. GYPSUM BOARD- (AS AN ALTERNATE TO ITEMS 4, 4A AND 4B)- 5/8 IN. THICK GYPSUM PANELS INSTALLED AS DESCRIBED IN ITEM 4A WITH TYPE S-12 STEEL SCREWS. THE LENGTH AND SPACING OF THE SCREWS AS SPECIFIED UNDER ITEM 4A.
- 4D. GYPSUM BOARD- (AS AN ALTERNATE TO ITEMS 4, 4A AND 4B)- 5/8 IN. THICK GYPSUM PANELS INSTALLED AS DESCRIBED IN ITEM 4A WITH TYPE S-12 STEEL SCREWS. THE LENGTH AND SPACING OF THE SCREWS AS SPECIFIED UNDER ITEM 4A. JOINTS ARE FINISHED WITH JOINT COMPOUND, APPLIED IN TWO COATS TO BOTH SIDES AND SANDED. JOINTS ARE FINISHED WITH JOINT COMPOUND, APPLIED IN TWO COATS TO BOTH SIDES AND SANDED. JOINTS ARE FINISHED WITH JOINT COMPOUND, APPLIED IN TWO COATS TO BOTH SIDES AND SANDED. JOINTS ARE FINISHED WITH JOINT COMPOUND, APPLIED IN TWO COATS TO BOTH SIDES AND SANDED.
5. RESULTANT CHANNEL- (OPTIONAL, NOT SHOWN)- 25 MSG GALV STEEL, RESILIENT CHANNELS SPACED VERTICALLY MAX 24 IN. O.C. FLANGE PORTION ATTACHED TO EACH INTERSECTING STUD WITH 1 1/2 IN. LONG TYPE 2-12 PANHEAD STEEL SCREWS. NOT FOR USE WITH TYPE FRX GYPSUM PANELS.
- 6A. STEEL FRAMING MEMBERS (NOT SHOWN)- AS AN ALTERNATE TO ITEM 3, FURRING CHANNELS AND RESILIENT SOUND ISOLATION CLIP AS DESCRIBED BELOW.
4. EXTERIOR CHANNELS FORMED NO. 25 MSG GALV STEEL, 2 3/8 IN. WIDE X 7/8 DEEP, SPACED VERTICALLY MAX 24 IN. O.C. TO STUDS AND ATTACHED TO STUDS WITH 1 1/2 IN. LONG TYPE 2-12 PANHEAD STEEL SCREWS.
5. STEEL FRAMING MEMBERS- USED TO ATTACH FURRING CHANNELS (ITEM 4) TO STUDS (ITEM 1).
- TYPE S STEEL SCREW THROUGH THE CENTER GROMMET. FURRING CHANNELS ARE FRICITION FITTED INTO CLIPS. *BEARING THE UL CLASSIFICATION MARK.

1 HR. FIRE WALL- UL U465 2

REVISED: 04-04-06

OFFICE/WAREHOUSE

DAMMON ENGINEERING, INC.

1095 FLORIDA AVENUE 985-649-5832 SLIDELL, LA. 70458
DAMMONENGINEERING.COM

FLOOR PLAN

PLATFORM CRANE SERVICE
DOSS DRIVE
SLIDELL, LOUISIANA

JOB NO. 1655

DATE: 04-07-05

SHEET

SCALE: AS NOTED

FILE:

OF

A-1

REVISED: 04-04-06