



Crossroads Tanning

Prepared for:
Chuck Dammon
Dammon Engineering

Prepared by:
Chip Beshenich
Specification
Lightolier Gulfcoast
4640 S. Carrollton Ave.
New Orleans, LA 70119
504-473-1913
Fax: 504-488-6861

1/19/2005

Final Phase



Project Summary

Project Summary

	<u>Interior</u>	<u>Exterior</u>	<u>Project</u>
Total Area:	1390.27 sq. ft.	0.00 sq. ft.	1390.27 sq. ft.
Connected Load:	4070.80 W	0 W	4070.80 W
Unit Power Density:	2.928 W/sq. ft.	0.00 W/sq. ft.	2.928 W/sq. ft.
Total Budget:	\$0.00	\$0.00	\$0.00

Interior Analysis

	<u>Actual Ill.*</u>	<u>Target Ill.*</u>	<u>Actual</u>	<u>Target</u>	<u>Total</u>	<u>% Int. Load</u>	<u>Total</u>	<u>% Int. Cost</u>
Floor 1								
Tanning Salon	34.33	0.00	2.9	1.2	4070.8	100.00%	\$0.00	\$0.00

*Illuminance units: fc

Zonal cavity illuminance does not take into account objects within the space, or daylighting.






**Unit Power Density units: W/sq. ft.

Luminaire Analysis

<u>Type</u>	<u>Quantity</u>	<u>Load (W)</u>	<u>Total Load(W)</u>	<u>% of Prj. Load</u>	<u>Cost (\$)</u>	<u>Total Cost(\$)</u>	<u>% of Prj. Cost</u>
EM	2	5.4	10.8	0.27%	\$0.00	\$0.00	0.00%
EX	2	0.0	0.0	0.00%	\$0.00	\$0.00	0.00%
F2	1	32.0	32.0	0.79%	\$0.00	\$0.00	0.00%
F1	1	128.0	128.0	3.14%	\$0.00	\$0.00	0.00%
R1	26	150.0	3900.0	95.80%	\$0.00	\$0.00	0.00%



Luminaire Schedule

Type	Symbol	Brand Name	Catalog Number	Description	Lamp	Lamp Wattage
EM		Lightolier	E5W			5.4
EX		Lightolier	LLNURW	Thermoplastic Exit Sign - White	N/A	N/A
F2		ExceLine	RLW32HFLGC	Kaleidoscope Luminaire	32W Quad T	32
F1		Lightolier	XP2GVA432UNVO4	2X4 G TROFFER W/ VA LENS	F32T8	32
R1		Lightolier	1146/1102P1	LYTECAST STND-Deep RFL	150W A-21	150



Room / Site Summary

Tanning Salon

Calculation Summary

	<u>Attained</u>	<u>Target</u>
Zonal Cavity Illum*:	34.33 fc	0.00 fc
Unit Power Density:	2.928 W/sq. ft.	1.20 W/sq. ft.

*Zonal cavity illuminance does not take into account objects within the space, or daylighting.

Area Summary

Overall Size:	25.58 ft x 54.35 ft x 10.00 ft
Reflectances:	Ceiling: 0.8
	Walls: North = 0.5, South = 0.5, East = 0.5, West = 0.5
	Floor: 0.2
Total Cost:	\$0.00

Luminaire Type Summary

<u>Type</u>	<u>Catalog Number</u>	<u>Quantity</u>
EM	Lightolier "Safety Lighting Systems" E5W	2
EX	Lightolier "Safety Lighting Systems" LLNURW	2
F2	ExceLine "Kaleidoscope" RLW32HFLGC	1
F1	Lightolier "Fluorescent" XP2GVA432UNVO4	1
R1	Lightolier "Lytecaster" 1146/1102P1	26

Luminaire Location Summary

<u>Type</u>	<u>X</u>	<u>Y</u>	<u>Z</u>	<u>Orient</u>	<u>Tilt</u>	<u>Spin</u>	<u>AimX</u>	<u>AimY</u>	<u>AimZ</u>	<u>LLF</u>	<u>Tilt Factor</u>
EM	14.716	51.087	8.50	-125.00	30.00	0.00	n/a	n/a	n/a	0.8	1.0
EM	15.618	12.523	9.999	-180.00	25.00	0.00	n/a	n/a	n/a	0.8	1.0
EX	9.26	53.65	8.50	0.00	0.00	0.00	n/a	n/a	n/a	0.8	1.0
EX	11.595	0.607	8.50	0.00	0.00	0.00	n/a	n/a	n/a	0.8	1.0
F2	12.094	54.847	8.50	0.00	0.00	0.00	n/a	n/a	n/a	0.8	1.0
F1	6.789	44.99	9.999	90.00	0.00	0.00	n/a	n/a	n/a	0.704	1.0
R1	5.416	31.254	9.997	0.00	0.00	0.00	n/a	n/a	n/a	0.8	1.0
R1	5.423	24.678	9.997	0.00	0.00	0.00	n/a	n/a	n/a	0.8	1.0
R1	20.171	25.369	9.997	0.00	0.00	0.00	n/a	n/a	n/a	0.8	1.0
R1	19.997	17.069	9.997	0.00	0.00	0.00	n/a	n/a	n/a	0.8	1.0
R1	5.419	16.856	9.997	0.00	0.00	0.00	n/a	n/a	n/a	0.8	1.0
R1	20.172	33.494	9.997	0.00	0.00	0.00	n/a	n/a	n/a	0.8	1.0
R1	20.276	42.558	9.997	0.00	0.00	0.00	n/a	n/a	n/a	0.8	1.0
R1	5.407	38.90	9.997	0.00	0.00	0.00	n/a	n/a	n/a	0.8	1.0
R1	12.296	42.482	9.997	0.00	0.00	0.00	n/a	n/a	n/a	0.8	1.0
R1	12.317	33.495	9.997	0.00	0.00	0.00	n/a	n/a	n/a	0.8	1.0
R1	12.303	25.448	9.997	0.00	0.00	0.00	n/a	n/a	n/a	0.8	1.0
R1	12.315	17.487	9.997	0.00	0.00	0.00	n/a	n/a	n/a	0.8	1.0
R1	3.322	9.49	9.997	0.00	0.00	0.00	n/a	n/a	n/a	0.8	1.0
R1	3.30	5.479	9.997	0.00	0.00	0.00	n/a	n/a	n/a	0.8	1.0



Room / Site Summary (cont'd)

Tanning Salon

Luminaire Location Summary

<u>Type</u>	<u>X</u>	<u>Y</u>	<u>Z</u>	<u>Orient</u>	<u>Tilt</u>	<u>Spin</u>	<u>AimX</u>	<u>AimY</u>	<u>AimZ</u>	<u>LLF</u>	<u>Tilt Factor</u>
R1	3.301	1.479	9.997	0.00	0.00	0.00	n/a	n/a	n/a	0.8	1.0
R1	9.303	9.489	9.997	0.00	0.00	0.00	n/a	n/a	n/a	0.8	1.0
R1	9.305	5.481	9.997	0.00	0.00	0.00	n/a	n/a	n/a	0.8	1.0
R1	9.304	1.471	9.997	0.00	0.00	0.00	n/a	n/a	n/a	0.8	1.0
R1	16.32	9.492	9.997	0.00	0.00	0.00	n/a	n/a	n/a	0.8	1.0
R1	16.307	5.479	9.997	0.00	0.00	0.00	n/a	n/a	n/a	0.8	1.0
R1	16.286	1.469	9.997	0.00	0.00	0.00	n/a	n/a	n/a	0.8	1.0
R1	22.317	1.463	9.997	0.00	0.00	0.00	n/a	n/a	n/a	0.8	1.0
R1	22.314	5.467	9.997	0.00	0.00	0.00	n/a	n/a	n/a	0.8	1.0
R1	22.316	9.479	9.997	0.00	0.00	0.00	n/a	n/a	n/a	0.8	1.0
R1	20.193	50.722	9.997	0.00	0.00	0.00	n/a	n/a	n/a	0.8	1.0
R1	11.33	50.454	9.997	0.00	0.00	0.00	n/a	n/a	n/a	0.8	1.0



Calculation Grid: Whole Room Horizontal Grid (Tanning Salon)

Horizontal Illuminance

Calculation Grid Summary

Grid Name: Whole Room Horizontal Grid	Grid Origin: (0.79, 1.18)	Grid Surface: n/a
Grid Type: Horizontal Illuminance	Grid Orient:	Grid Hinge: 0
Grid Units: Footcandles	Grid Elev.: 2.50	Grid Azimuth: 0

Statistical Area Summary

<u>Stat. Area</u>	<u>Ave</u>	<u>Max</u>	<u>Min</u>	<u>Ave/Min</u>	<u>Max/Min</u>	<u>Std. Dev.</u>
Whole Room Horizontal Grid	24.6	68.7	0.0	Undefined	Undefined	17.0

Calculation Grid

	0.79	2.79	4.79	6.79	8.79	10.79	12.79	14.79	16.79	18.79	20.79	22.79	24.79
53.18	0.0	0.0	0.0	0.0	15.3	18.7	17.5	12.3	13.3	18.0	19.1	15.4	9.1
51.18	0.0	0.0	0.0	0.0	19.1	25.7	23.3	15.4	15.8	22.7	25.1	18.5	11.7
49.18	0.0	0.0	0.0	0.0	18.4	25.8	24.2	16.4	14.8	20.4	21.9	17.1	10.8
47.18	0.0	0.0	0.0	0.0	12.9	24.8	25.5	18.0	10.5	14.3	15.0	12.5	6.6
45.18	28.9	43.4	56.2	62.6	56.9	23.7	25.8	18.4	12.2	16.7	17.9	14.6	8.6
43.18	25.7	38.7	49.9	55.3	50.3	23.7	28.3	19.8	14.7	21.4	23.7	17.9	11.4
41.18	9.1	15.4	19.3	18.3	13.5	22.1	26.2	19.0	14.0	19.8	21.8	16.9	10.7
39.18	11.3	18.0	24.8	22.5	15.5	20.0	23.0	17.6	10.2	14.2	15.1	12.6	6.9
37.18	10.1	16.4	21.0	19.7	14.3	20.4	23.5	17.7	9.5	13.4	14.0	11.4	5.8
35.18	5.5	11.0	13.4	12.9	9.2	21.5	25.4	18.9	14.0	19.3	20.7	16.1	9.9
33.18	9.7	16.0	20.4	19.2	14.1	23.9	29.2	20.5	15.1	22.1	23.9	17.7	11.1
31.18	11.3	18.1	24.9	22.6	15.6	23.0	26.8	20.0	13.0	17.7	18.8	14.9	8.8
29.18	9.4	15.6	19.8	18.8	13.8	24.2	27.6	21.3	8.8	12.6	13.2	10.7	5.3
27.18	8.1	14.1	17.7	16.8	12.5	23.3	27.4	20.2	13.8	19.0	20.3	15.8	9.7
25.18	11.3	18.1	24.9	22.7	15.7	24.7	30.0	21.1	15.1	22.1	23.9	17.7	11.1
23.18	10.3	16.7	21.7	20.3	14.7	23.5	27.5	20.5	13.3	18.0	19.1	15.1	9.1
21.18	6.3	12.2	14.8	14.2	10.4	24.8	28.3	21.9	7.4	11.1	11.7	9.1	4.3
19.18	9.0	15.3	19.2	18.2	13.4	23.6	28.0	20.6	14.0	18.7	19.3	15.0	8.6
17.18	11.3	18.1	24.9	22.6	15.6	24.1	30.5	20.7	15.8	22.8	24.1	17.1	10.4
15.18	10.1	16.4	21.1	19.8	14.4	20.1	28.0	18.1	14.2	19.2	19.8	15.2	8.9

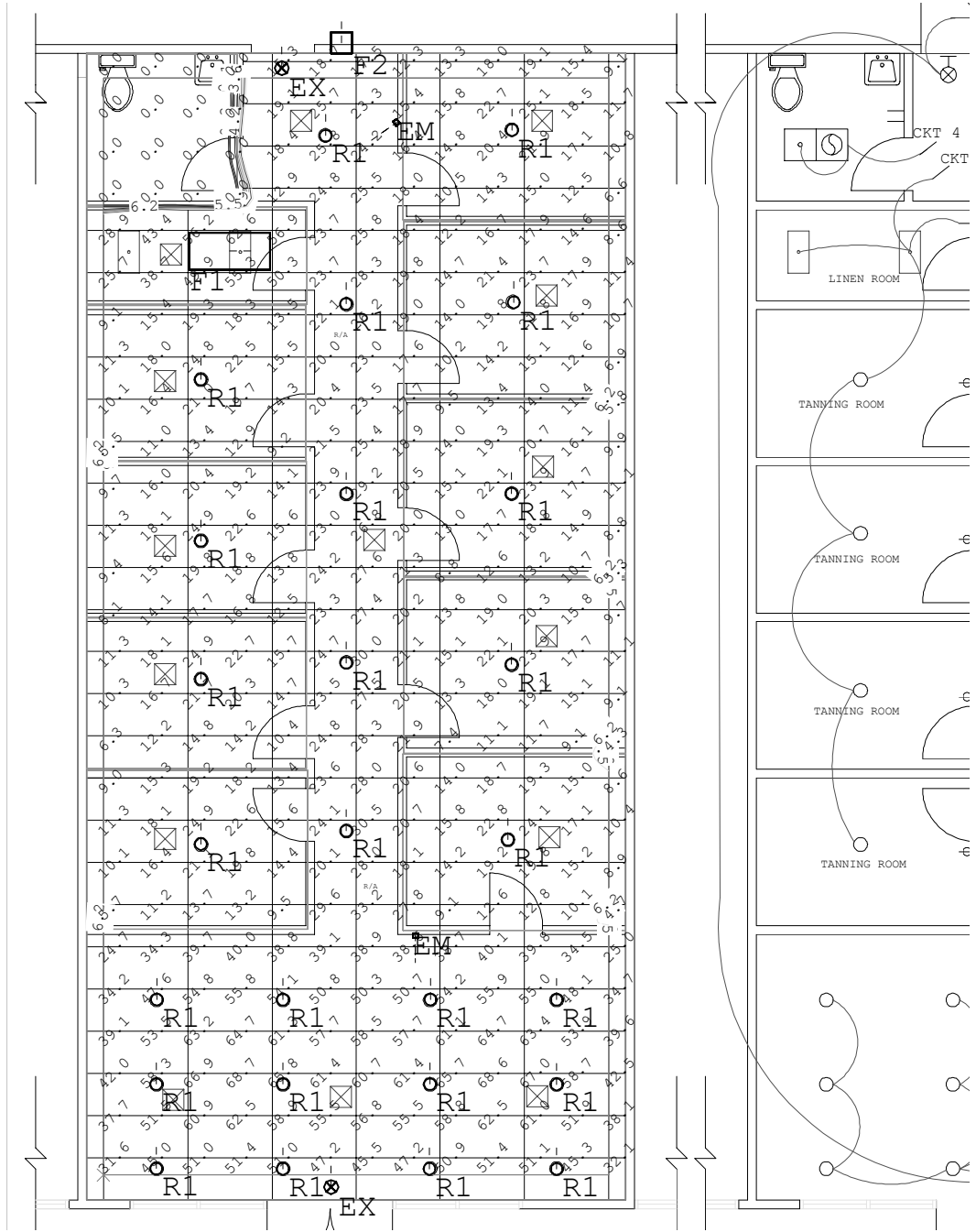


Calculation Grid: Whole Room Horizontal Grid (Tanning Salon) (Page 2)

Horizontal Illuminance

Calculation Grid

	0.79	2.79	4.79	6.79	8.79	10.79	12.79	14.79	16.79	18.79	20.79	22.79	24.79
13.18	5.7	11.2	13.7	13.2	9.5	29.6	33.2	27.8	9.1	12.6	12.8	10.1	4.7
11.18	24.7	34.3	39.7	40.0	38.8	39.1	38.9	38.6	38.7	40.1	39.8	34.5	25.0
9.18	34.2	47.6	54.8	55.8	54.1	50.8	50.3	50.7	54.2	55.9	55.0	48.1	34.7
7.18	39.1	53.5	63.2	64.7	61.3	57.7	58.5	57.7	61.1	64.7	63.4	53.9	39.6
5.18	42.0	58.3	66.9	68.7	65.8	61.4	60.7	61.4	65.7	68.6	67.0	58.7	42.5
3.18	37.7	51.5	60.9	62.5	58.9	55.5	56.8	55.5	58.8	62.5	61.0	51.9	38.1
1.18	31.6	45.0	51.0	51.4	51.0	47.2	45.5	47.2	50.9	51.4	51.1	45.3	32.1



Tanning Salon Plan View

Scale: Scale to Fit



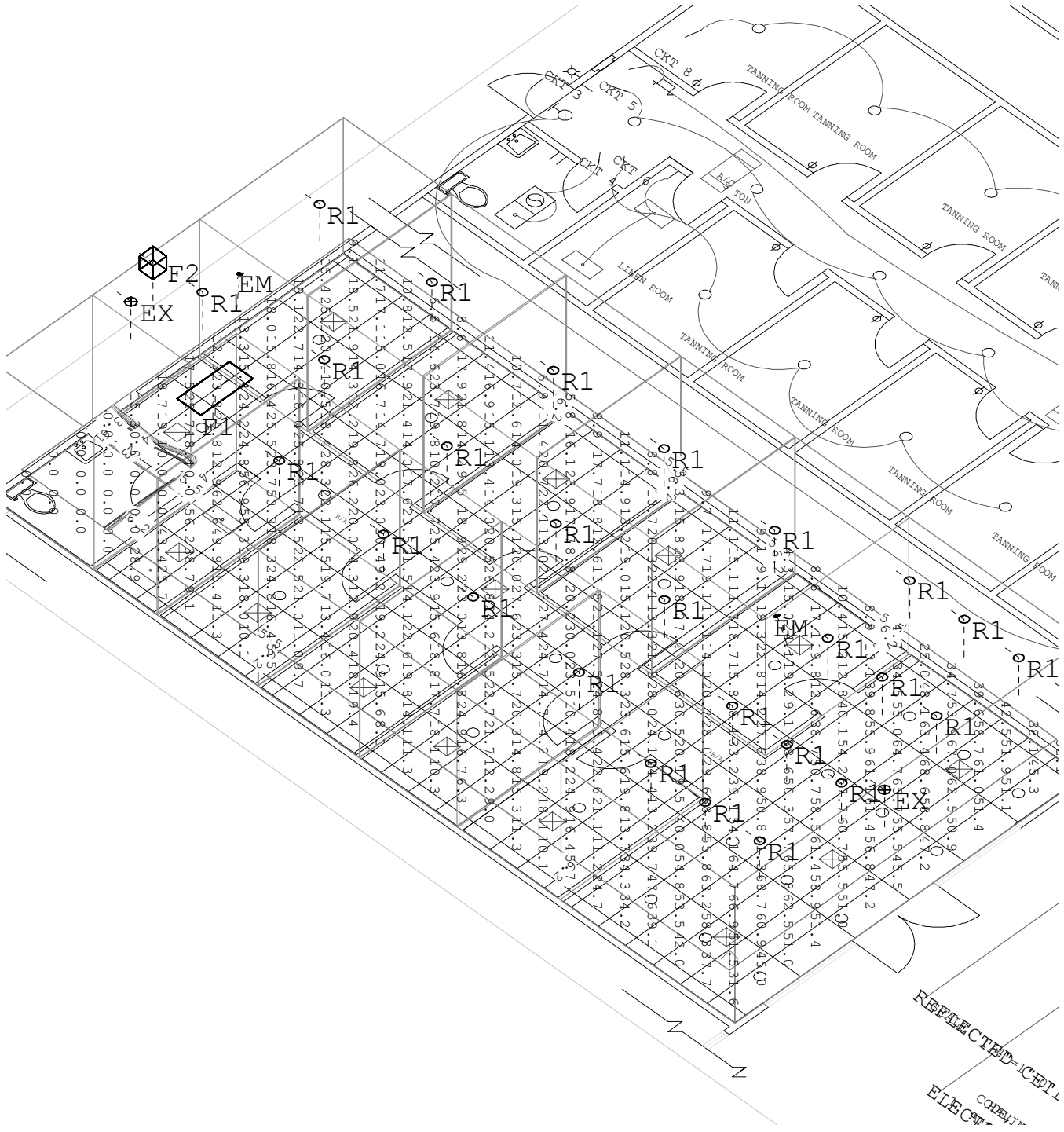
Crossroads Tanning

Lightolier Gulfcoast

New Orleans, LA

1/19/2005

Prepared for: Dammon Engineering



Tanning Salon Isometric View

Scale: Scale to Fit

Crossroads Tanning

Lightolier Gulfcoast

New Orleans, LA

1/19/2005

Prepared for: Dammon Engineering