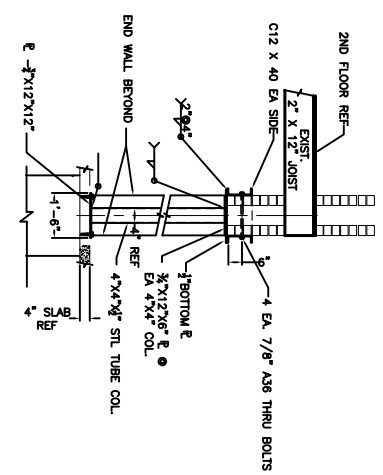


FIRST FLOOR PLAN
SCALE: 1/4" = 1'-0"



SECTION
N. T. S.

- NOTES:**
1. INSTALL C12 X 40 ON EA. SIDE. INSTALL ALL BOLTED CONNECTIONS & INSTALL 4" X 4" COLUMN PRIOR TO DEMOLITION OF BOTTOM OF BRICK COLUMN. DO NOT OVERTIGHTEN THRU BOLTS.
 2. REMOVE ONLY ENOUGH BRICK EA. TIME TO INSTALL 12" SEGMENT OF 1/2" BOTTOM PLATE. WELD SECURELY TO FILL ANY GAP BETWEEN E & BRICK W/ NON-SHRINK GROUT.
 3. ATTACH BASE E TO FLOOR WITH 2 EA. 3/4" EXPANSION ANCHORS, MIN. OF 3 1/2" INTO FLOOR BEAM.

REVISED 03-02-05

| | | |
|--|---|---|
| <p>1095 FLORIDA AVENUE 985-649-5888 SLIDELL, LA. 70468 DAMMON ENGINEERING, INC. DAMMONENGINEERING.COM</p> | <p>REGIONS BANK LOBBY MODIFICATIONS</p> | <p>LOBBY MODIFICATION PLAN</p> <p>REGIONS BANK 1901 CAUSEWAY BLVD. MANDEVILLE, LOUISIANA</p> |
| <p>SHEET 1 S1A OF 1</p> | <p>FILE: _____ JOB NO.: _____ DATE: 2-22-05</p> | |