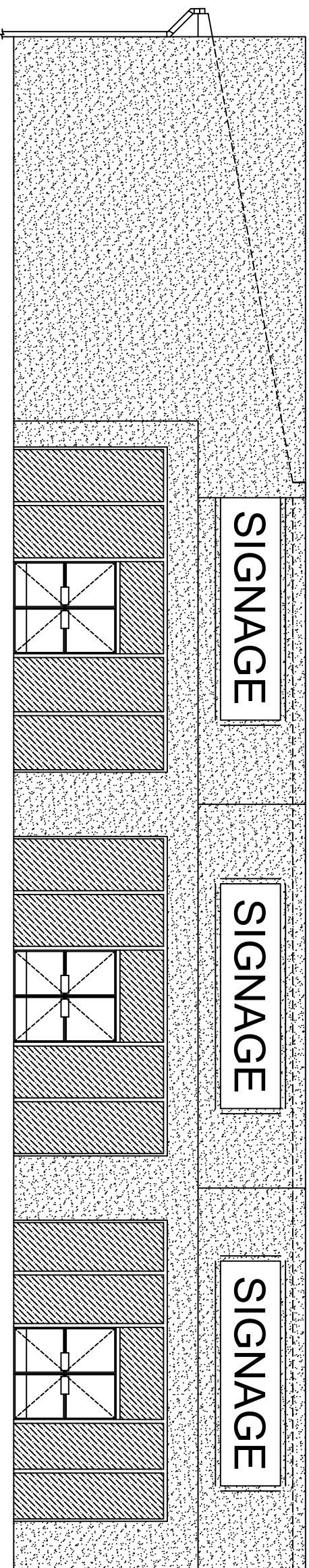


NEW OFFICE BUILDING

TOTAL SQ.FT. = 5,127



GRISWOLD PROPERTIES

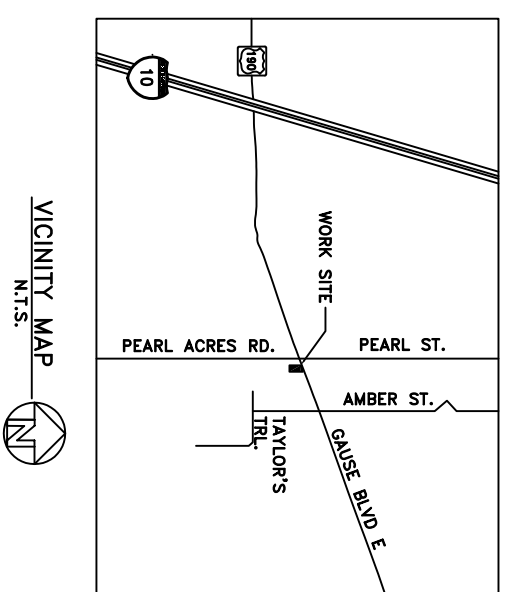
2117 GAUSE BLVD. E

SLIDELL, LOUISIANA

INTERNATIONAL BUILDING CODE

- OCCUPANCY: B-NONSEPARATED USE
 CONSTRUCTION TYPE V B
- (TABLE 503) ALLOWABLE 9,000 SQ. FT. TWO STORIES
- (TABLE 601) FIRE RESISTANCE RATING:
 STRUCTURAL FRAME-0 HRS.
 BEARING WALLS (INTERIOR & EXTERIOR)-0 HRS.
 FLOOR CONSTRUCTION-0 HRS.
- (TABLE 602) FIRE RESISTANCE RATING FOR EXTERIOR WALLS-
 0 HRS.-ALL EXTERIOR WALLS
- (TABLE 704.8) MAX AREA OF WALL OPENINGS
 UNLIMITED UNPROTECTED OPENINGS
 ALLOWED THROUGHOUT.
- (IBC 1603.1.4) THIS BUILDING SHALL BE DESIGNED IN ACCORDANCE
 WITH IBC SECTION 1609 AS A PARTIALLY ENCLOSED
 BUILDING USING THE FOLLOWING INFORMATION:
 (IBC FIG. 1609) - BASIC WIND SPEED (3 SECOND GUSTS)-130 MPH
 (TABLE 1604.5) - CATEGORY I BUILDING, IW=1
 (IBC 1609.4) - EXPOSURE B
 - DETERMINATION OF WIND LOADS SHALL BE IN
 ACCORDANCE WITH IBC 1609.6

DWG.#	DRAWING NAME
C-1	SITE PLAN
C-2	PAVING AND DRAINAGE PLAN
C-3	PAVING NOTES AND DETAILS
C-4	SEWER AND WATER PLAN
C-5	PHOTOMETRIC PLAN
S-1	FOUNDATION PLAN
A-1	FLOOR / ROOF PLAN
A-2	SECTION
A-3	EXTERIOR ELEVATIONS
E-1	ELECTRICAL PLAN
M-1	MECHANICAL PLAN
P-1	PLUMBING PLAN



DATE: 11-15-05
 JOB NO.: 1550
 NEW OFFICE BUILDING
 JIM GRISWOLD
 2117 GAUSE BLVD. E
 SLIDELL, LOUISIANA