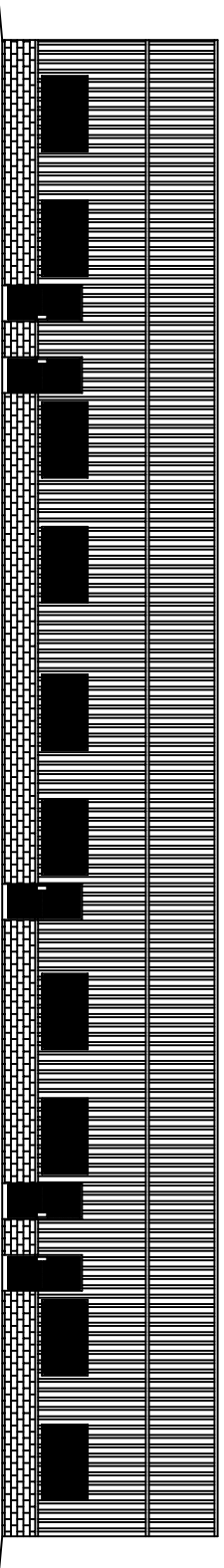


# REINE CONSTRUCTION CORP. NEW OFFICE BUILDING



## HOWZE BEACH ROAD SLIDELL, LOUISIANA LOT 2 DISCOVERY PARK

### INTERNATIONAL BUILDING CODE

OCCUPANCY: GROUPS B&S-NONSEPARATED USE  
BUILDING AREA: 7,500 SQ. FT.

CONSTRUCTION TYPE: **Ⅱ B**

(TABLE 503) ALLOWABLE 23,000 SQ. FT. FOUR STORIES

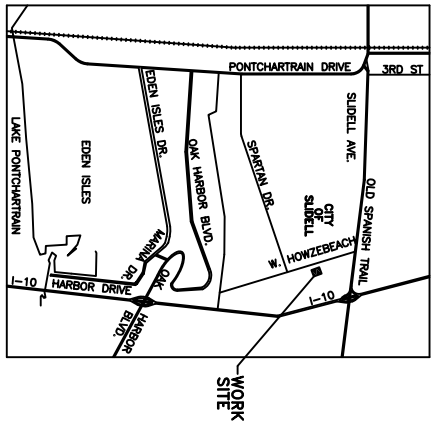
(TABLE 601) FIRE RESISTANCE RATING:  
STRUCTURAL FRAME-0 HRS.  
BEARING WALLS (INTERIOR & EXTERIOR)-0 HRS.  
FLOOR CONSTRUCTION-0 HRS.  
ROOF CONSTRUCTION-0 HRS.

(TABLE 602) FIRE RESISTANCE RATING FOR EXTERIOR WALLS-  
0 HRS.-ALL EXTERIOR WALLS

(TABLE 704.8) MAX. AREA OF WALL OPENINGS  
UNLIMITED UNPROTECTED OPENINGS  
ALLOWED THROUGHOUT.

(IBC 1603.1.4) THIS BUILDING SHALL BE DESIGNED IN ACCORDANCE WITH IBC SECTION 1609 AS A PARTIALLY ENCLOSED BUILDING USING THE FOLLOWING INFORMATION:  
(IBC FIG. 1609) BASIC WIND SPEED (3 SECOND GUSTS)-130 MPH  
(TABLE 1604.5) CATEGORY I BUILDING, IE=1, IS=1, IW=1  
(IBC 1609.4) - EXPOSURE B  
- DETERMINATION OF WIND LOADS SHALL BE IN ACCORDANCE WITH IBC 1609.6

INDEX OF DRAWINGS	DWG.#	DRAWING NAME
	C-1	SITE PLAN
	C-2	PAVING & DRAINAGE PLAN
	C-3	SEWER AND WATER PLAN
	C-4	PAVING NOTES AND DETAILS
	C-5	PHOTOMETRIC PLAN
	S-1	FOUNDATION PLAN
	A-1	FLOOR PLAN
	A-2	ELEVATIONS
	A-3	SECTION
	E-1	ELECTRICAL PLAN
	M-1	MECHANICAL PLAN
	P-1	PLUMBING PLAN



VICINITY MAP  
N.T.S.  
REVISED: 2-14-06

REINE CONSTRUCTION CORP.  
BRIAN REINE  
HOWZE BEACH ROAD  
SLIDELL, LOUISIANA 70458

DATE: 06-17-06  
JOB NO. 1689

**DAMMON ENGINEERING, INC.**  
1095 FLORIDA AVENUE (985) 649-5832  
SLIDELL, LA. 70458  
DAMMONENGINEERING.COM