

**DAMMON**  
ENGINEERING, INC.

CHIEF ENGINEER  
EMMETT  
DAMMON, P.E.  
CHIEF ARCHITECT  
ROBERT  
VILTSE

1095 FLORIDA AVENUE  
SIDELL, LA. 70458  
OFFICE: 985-649-5832  
FAX: 985-641-5950

WEBSITE:  
WWW.DAMMONENGINEERING.COM  
EMAIL:  
DAMMONENG@BLSOUTH.NET

ARCHITECTURE  
ENGINEERING  
STUDIES  
PLANNING  
INVESTIGATION  
EXPERT WITNESS

PRODUCTOS  
LATINOS  
BAKERY

2767  
SGT ALFORD DRIVE  
SIDELL  
LOUISIANA  
70458

FRANCISCO  
BERMUDEZ

REV:

SCALE AS NOTED

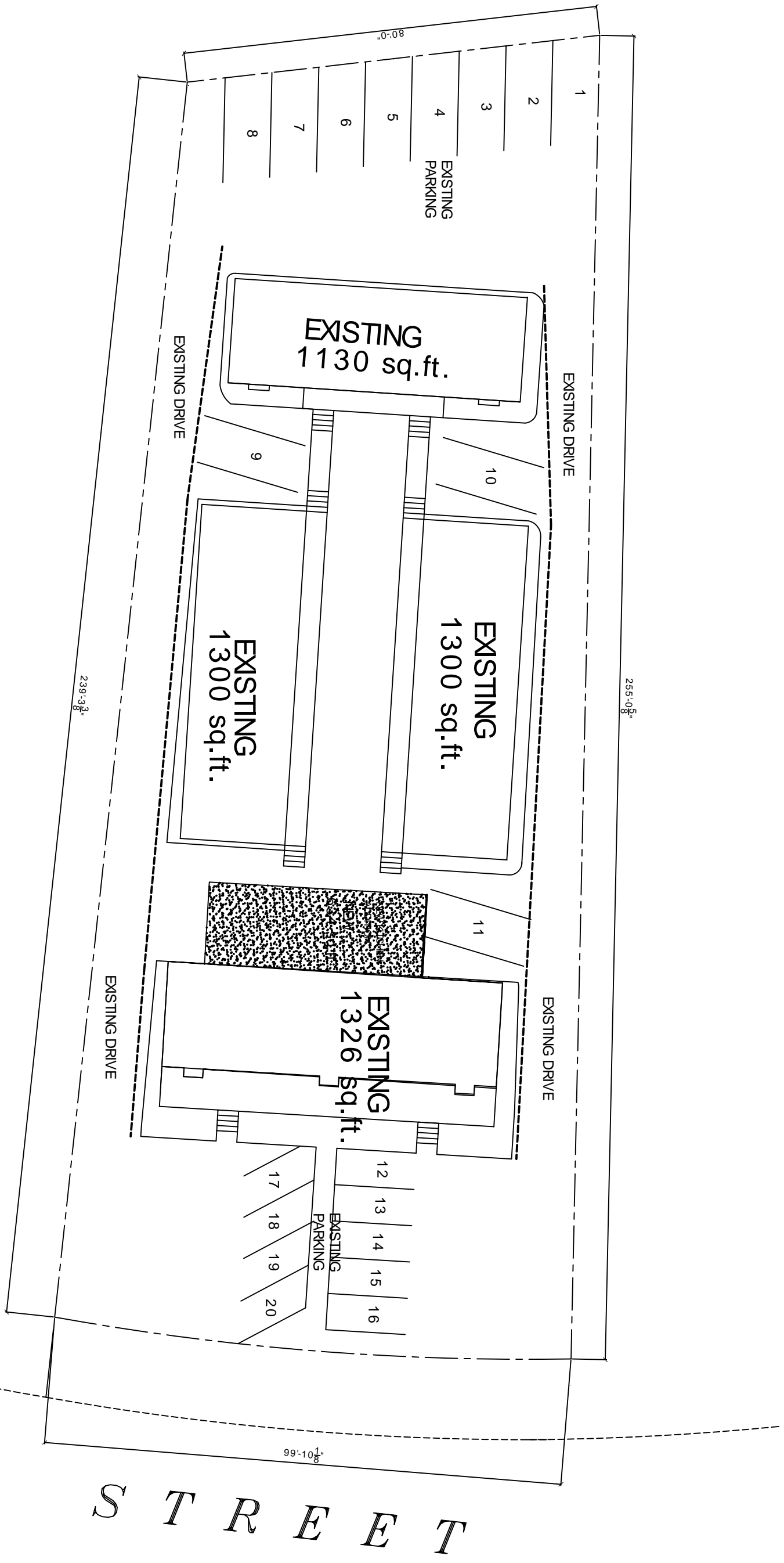
JOB#: 1940

4-9-08

SHEET 2

C-1

OF 10



SITE PLAN  
SCALE 1" = 10'-0"

EXISTING TOTAL      NEW  
5056 sq.ft.      634 sq.ft.  
COMBINED TOTAL 5690 SQ.FT.

FRANCISCO BERMUDEZ ON THIRD STREET