

DAMMON
ENGINEERING, INC.

CHIEF ENGINEER
EMMETT
DAMMON, P.E.
CHIEF ARCHITECT
ROBERT
WILTSE

1 095 FLORIDA AVENUE
SUDELL, LA. 70458
OFFICE 985-649-5832
FAX 985-641-5950

WEBSITE
WWW.DAMMONENGINEERING.COM
EMAIL:
DAMMONENG@BELL.SOUTH.NET

ARCHITECTURE
ENGINEERING
STUDIES
PLANNING
INVESTIGATION
EXPERT WITNESS

PRODUCTOS
LATINOS
BAKERY

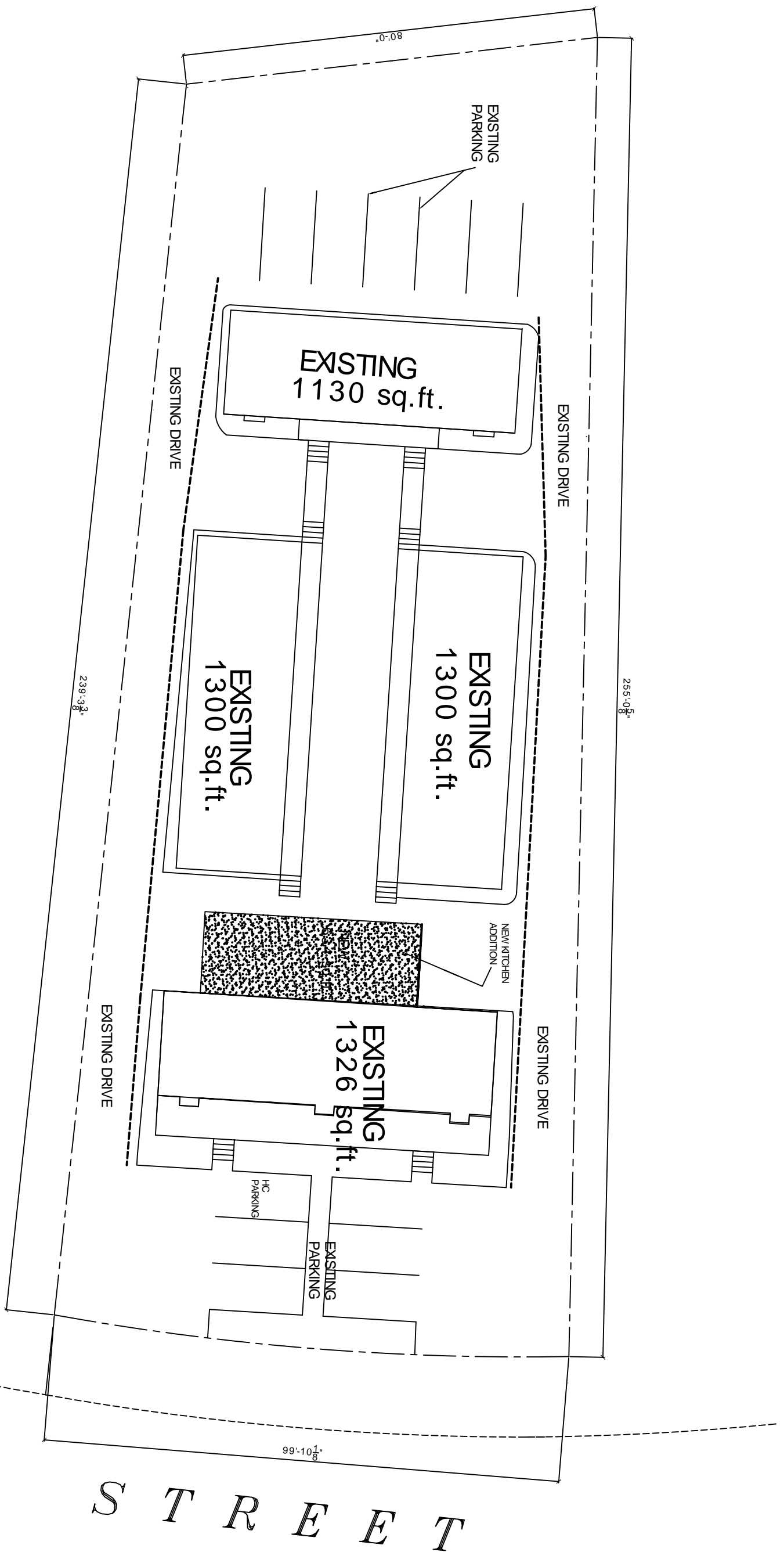
2767
SGT ALFORD DRIVE
SUDELL
LOUISIANA
70458

FRANCISCO
BERMUDEZ

REV:	
SCALE AS NOTED	
JOB#: 1940	
4-9-08	
SHEET 2	

C-1

OF 10



SITE PLAN
SCALE 1" = 10'-0"

MR. BRUNO, HERE ARE THE SQUARE FOOTAGE THAT YOU
ASKED FOR ON THIS PROJECT.
THANKS
CHUCK DAMMON 7-22-08

EXISTING TOTAL NEW
5056 sq.ft. 634 sq.ft.
COMBINED TOTAL 5690 SQ.FT.

FRANCISCO BERMUDEZ ON THIRD STREET