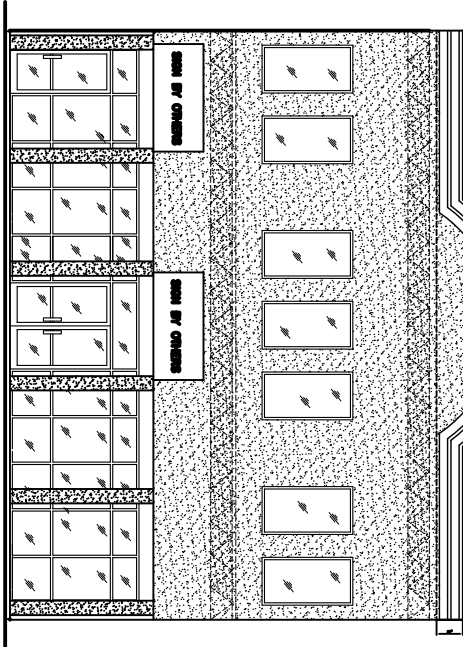


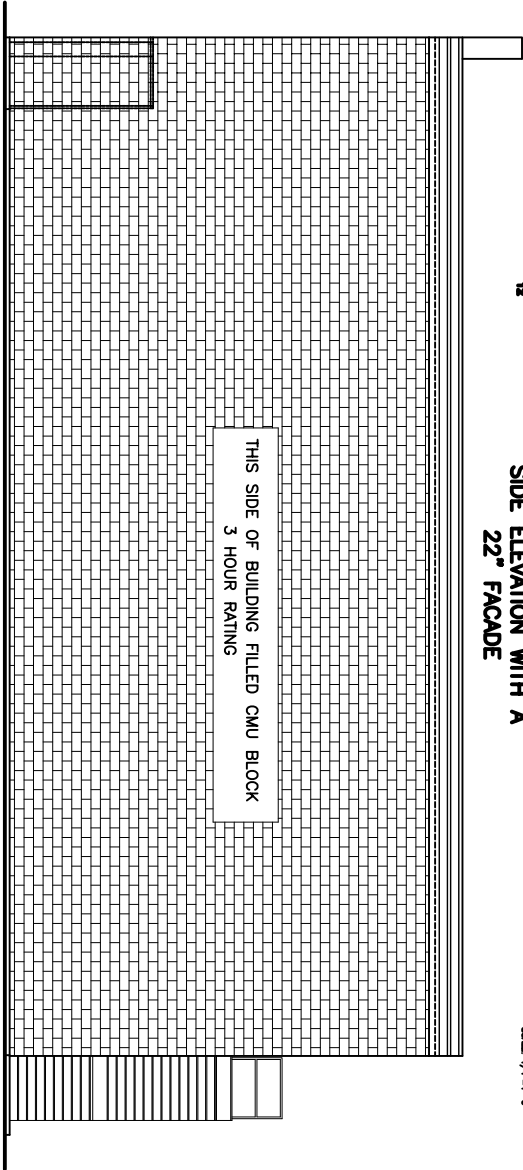
FLAT ROOF  
SLOPES SLIGHTLY FRONT  
TO BACK



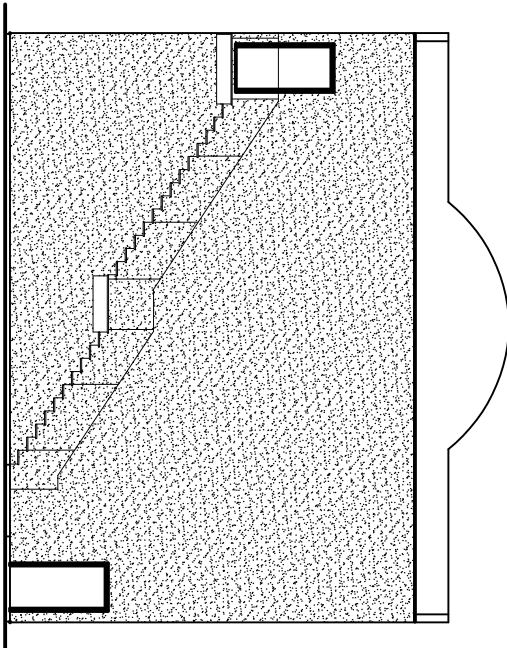
NORTH BUILDING ELEVATION  
SCALE: 1/8"=1'-0"

12

SIDE ELEVATION WITH A  
22" FACADE



EAST BUILDING ELEVATION  
SCALE: 1/8"=1'-0"



SOUTH BUILDING ELEVATION  
SCALE: 1/8"=1'-0"

SCALE(S) NOTED
FILE:
JOB NO.
DATE: XX-XX-04
SHEET
A-1

PROJECT

**DAMMON ENGINEERING, INC.**

1005 FLORIDA AVENUE 988-848-8888 SLIDELL, LA. 70468  
DAMMONENGINEERING.COM

BUILDING ELEVATIONS
SLIDELL, LOUISIANA