



PLUMBING RISER DIAGRAM  
N.T.S.

TEMPORARY  
SYSTEM HEAD  
VERTICAL LOCATION

TEMPORARY  
SYSTEM HEAD  
VERTICAL LOCATION

TEMPORARY  
SYSTEM HEAD  
VERTICAL LOCATION

TEMPORARY  
SYSTEM HEAD  
VERTICAL LOCATION

TEMPORARY  
SYSTEM HEAD  
VERTICAL LOCATION

TEMPORARY  
SYSTEM HEAD  
VERTICAL LOCATION

TEMPORARY  
SYSTEM HEAD  
VERTICAL LOCATION

TEMPORARY  
SYSTEM HEAD  
VERTICAL LOCATION

TEMPORARY  
SYSTEM HEAD  
VERTICAL LOCATION

TEMPORARY  
SYSTEM HEAD  
VERTICAL LOCATION

TEMPORARY  
SYSTEM HEAD  
VERTICAL LOCATION

TEMPORARY  
SYSTEM HEAD  
VERTICAL LOCATION

TEMPORARY  
SYSTEM HEAD  
VERTICAL LOCATION

TEMPORARY  
SYSTEM HEAD  
VERTICAL LOCATION

TEMPORARY  
SYSTEM HEAD  
VERTICAL LOCATION

TEMPORARY  
SYSTEM HEAD  
VERTICAL LOCATION

TEMPORARY  
SYSTEM HEAD  
VERTICAL LOCATION

TEMPORARY  
SYSTEM HEAD  
VERTICAL LOCATION

TEMPORARY  
SYSTEM HEAD  
VERTICAL LOCATION

TEMPORARY  
SYSTEM HEAD  
VERTICAL LOCATION

TEMPORARY  
SYSTEM HEAD  
VERTICAL LOCATION

TEMPORARY  
SYSTEM HEAD  
VERTICAL LOCATION

TEMPORARY  
SYSTEM HEAD  
VERTICAL LOCATION

TEMPORARY  
SYSTEM HEAD  
VERTICAL LOCATION

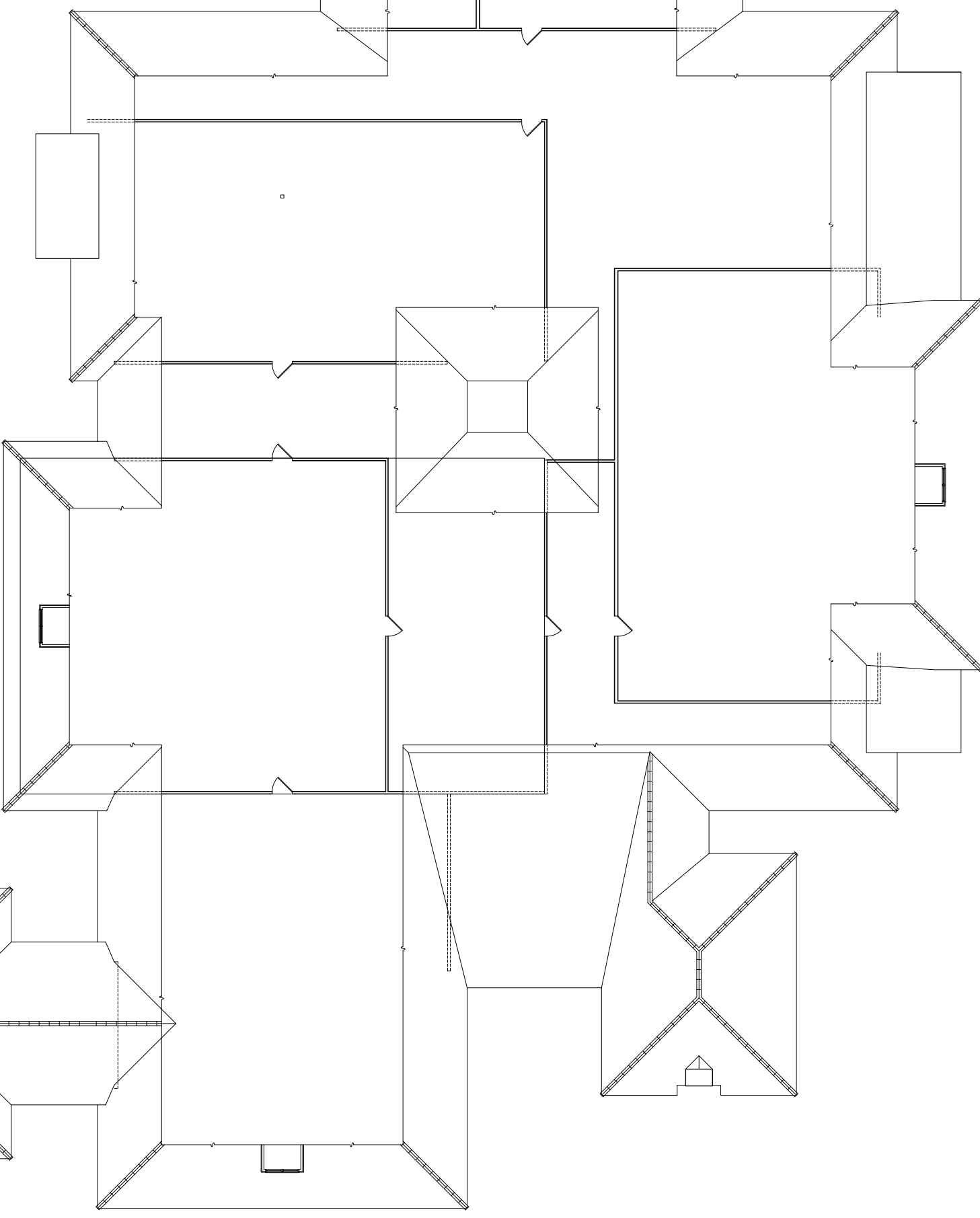
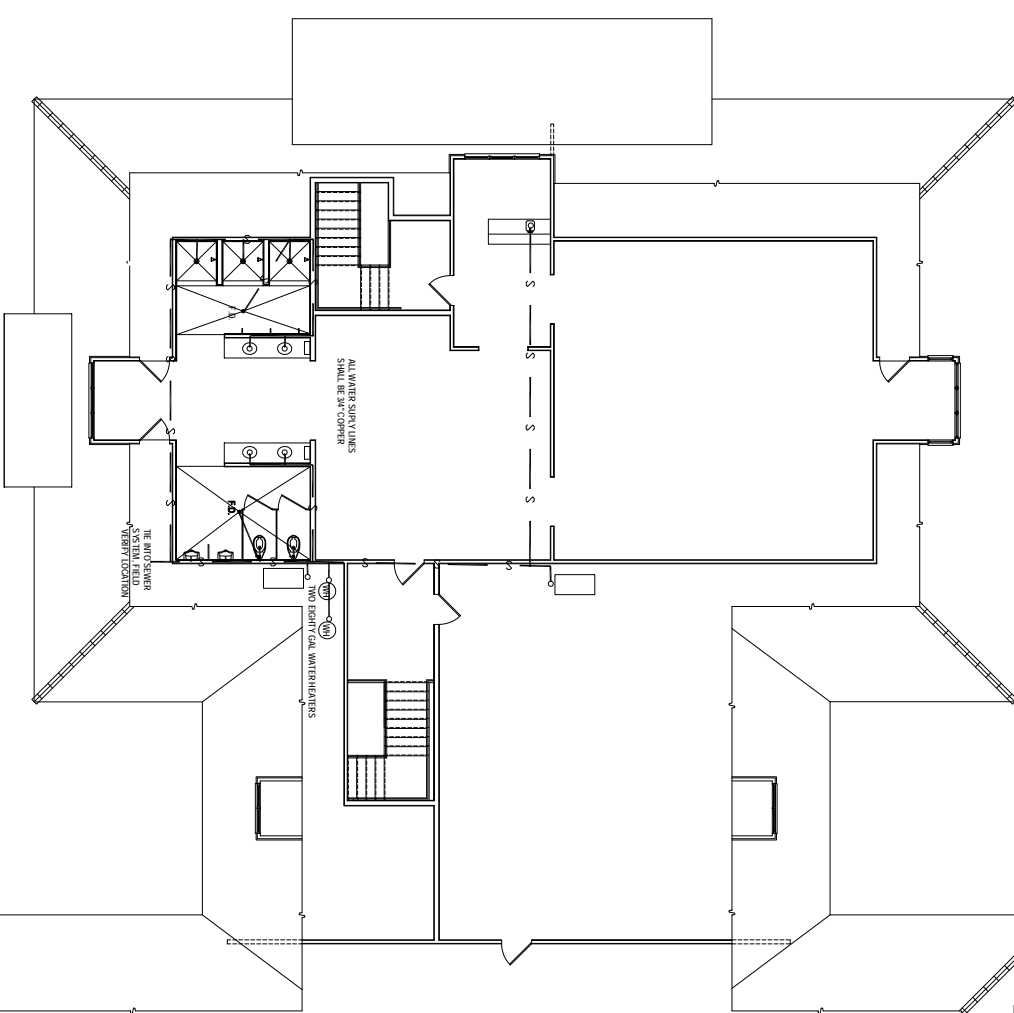
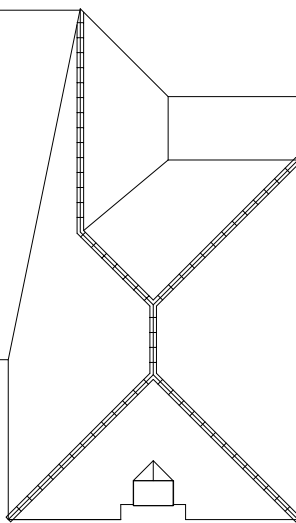
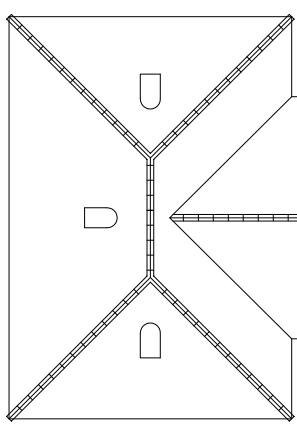
TEMPORARY  
SYSTEM HEAD  
VERTICAL LOCATION

TEMPORARY  
SYSTEM HEAD  
VERTICAL LOCATION

TEMPORARY  
SYSTEM HEAD  
VERTICAL LOCATION

TEMPORARY  
SYSTEM HEAD  
VERTICAL LOCATION

ATTIC  
1  
PLUMBING PLAN  
1/8"=1'-0"



REVISED: NO.

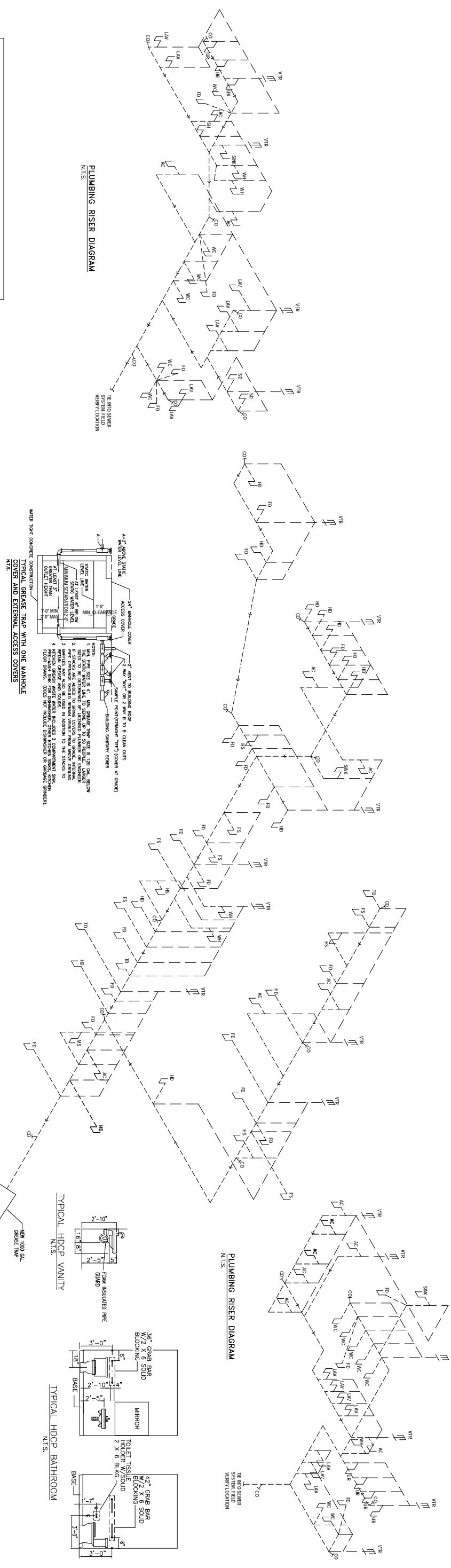
P-2

DRAWING: SCALE: AS NOTED  
DRAWN: DAMMON DATE: 01-22-07  
PROJECT: FOLIO:

TCHEFUNCTA COUNTRY CLUB  
NEW CLUBHOUSE  
COVINGTON, LOUISIANA

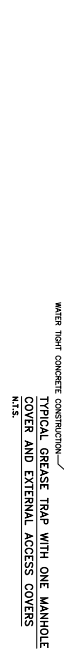
DAMMON ENGINEERING, INC.  
1000 FLORIDA AVENUE 888-848-8888 SLIDELL, LA. 70468  
DAMMONENGINEERING.COM

P-2

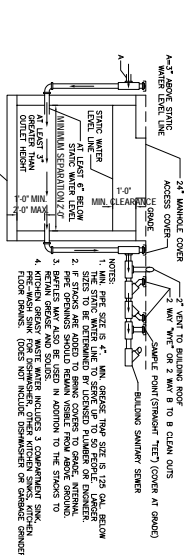


PLUMBING RISER DIAGRAM  
N.T.S.

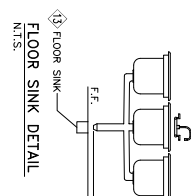
PLUMBING RISER DIAGRAM  
N.T.S.



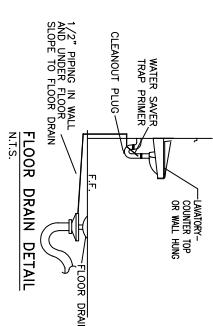
TYPICAL INTERIOR WALL SLEEVE DETAIL  
N.T.S.



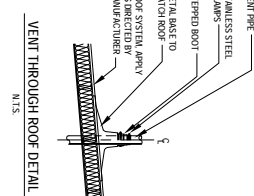
WATER TRAP CLEANOUT COVER AND EXTERNAL ACCESS COVERS  
N.T.S.



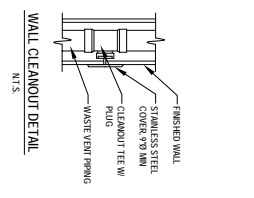
FLOOR SINK DETAIL  
N.T.S.



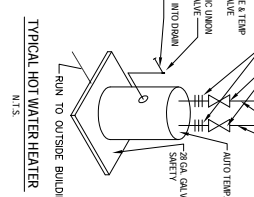
FLOOR DRAIN DETAIL  
N.T.S.



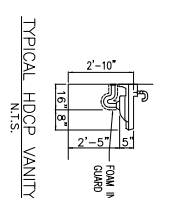
VENT THROUGH ROOF DETAIL  
N.T.S.



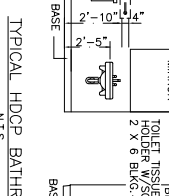
WALL CLEANOUT DETAIL  
N.T.S.



TYPICAL HOT WATER HEATER  
N.T.S.



TYPICAL HOOD VANITY  
N.T.S.



TYPICAL HDCP BATHROOM  
N.T.S.

PLUMBING RISER DIAGRAM  
N.T.S.

PLUMBING RISER DIAGRAM  
N.T.S.

MARK	DESCRIPTION	TYPE	ROUGH-IN SIZES	NOTES
H.C.	H.C. WATER CLOSET	W.C.	12\"/>	
LAV.	LAV. WASHBASIN	W.C.	12\"/>	
F.D.	FLOOR DRAIN	W.C.	12\"/>	
W.H.	WATER HEATER	W.C.	30\"/>	
W.H.	WATER HEATER	W.C.	30\"/>	
W.C.	W.C. TRAP	W.C.	12\"/>	
W.C.	W.C. TRAP	W.C.	12\"/>	
W.C.	W.C. TRAP	W.C.	12\"/>	

- NOTES:
1. INSULATE PIPING FOR HANDICAP FIXTURE.
  2. H.C. = HANDICAP FIXTURE.
  3. H.C. = HANDICAP FIXTURE.
  4. INSTALL CONTINUOUS DRIP ON ALL FLOOR DRAINS.

- PLUMBING NOTES
1. PROVIDE ALL LABOR MATERIAL AND EQUIPMENT FOR COMPLETE OPERATING SYSTEM. THE SYSTEM SHALL INCLUDE SHIPMENTS WITHOUT ANY RESTRICTIONS TO VOLUME, CUT AND PATCHES REQUIRED TO INSTALL LINES.
  2. ALL WORK AND MATERIAL TO COMPLY STRICTLY TO THE LATEST LOCAL CITY, FEDERAL, STATE AND NATIONAL GOVERNING CODES.
  3. CONTRACTOR TO FIELD VERIFY ALL EXISTING UTILITY LOCATIONS, ELEVATIONS AND SET POINTS TO CORRECTING ANY WORK. CONTRACTOR SHALL VERIFY NECESSARY TIES FOR THE UTILITIES CONNECTIONS.
  4. CONTRACTOR TO BE RESPONSIBLE TO VERIFY ANY EXISTING METERS AND SET NEW METERS OF SERVICE AND BRANCHED TIES.
  5. SERVICE LINES 3" AND SMALLER SHALL BE SCHEDULE 40 STEEL PIPE AND LARGER SHALL BE 2" PER FOOT.
  6. TEST ALL PIPING AT REQUIRED PRESSURE.
  7. ALL PIPING SHALL BE CLOSELY COORDINATED WITH STRUCTURAL, MECHANICAL, AND ELECTRICAL SYSTEMS TO INSURE NO TIES WILL CONFLICT WITH EACH OTHER.
  8. DO NOT SCALE DRAWINGS. SEE DIMENSIONS ON ARCHITECTURAL DRAWINGS FOR EXACT LOCATIONS OF DOORS, WINDOWS, WALLS, FINISHES, ETC.
  9. ALL WATER MAINS AND PIPING NOT SHOWN FOR CLARITY. ALL LOCATIONS FIELD VERIFIED.
  10. DOWN THE HOT AND COLD WATER PIPING AND FITTINGS UNDER 2" SHALL BE ASTM B308 COPPER WATER TUBE, TYPE 1, HARD DRAWN WITH COPPER PRESSURE TIE FITTINGS, ANSB B322. THE JOINTS SHALL BE SOLDERED TYPE USING ASTERED. ALLOY GRADE 90/10 SOLIDER.
  11. SOIL, WATER, VENT PIPING AND FITTINGS ABOVE THE SLAB SHALL BE SERVICE WEIGHT CAST IRON PIPE WITH RELL AND FITTINGS MEET ALL UNDERBY CODE.
  12. ALL WATER PIPING AND FITTINGS ABOVE THE FINISHED FLOOR SHALL BE INSULATED WITH 1/2" THICK BERGLASS INSULATION 2" JACK.
  13. ALL ELECTRICAL, MECHANICAL, AND PLUMBING PIPING THROUGH WALLS SHALL BE FIRE CALULATED. PENETRATIONS THROUGH WALLS SHALL BE SMOKE TIGHT AND SHALL BE PROTECTED BY THE PRESENCE OF FLAMES AND HOT GASES WHEN TESTED IN ACCORDANCE WITH ASHRAE 153.