

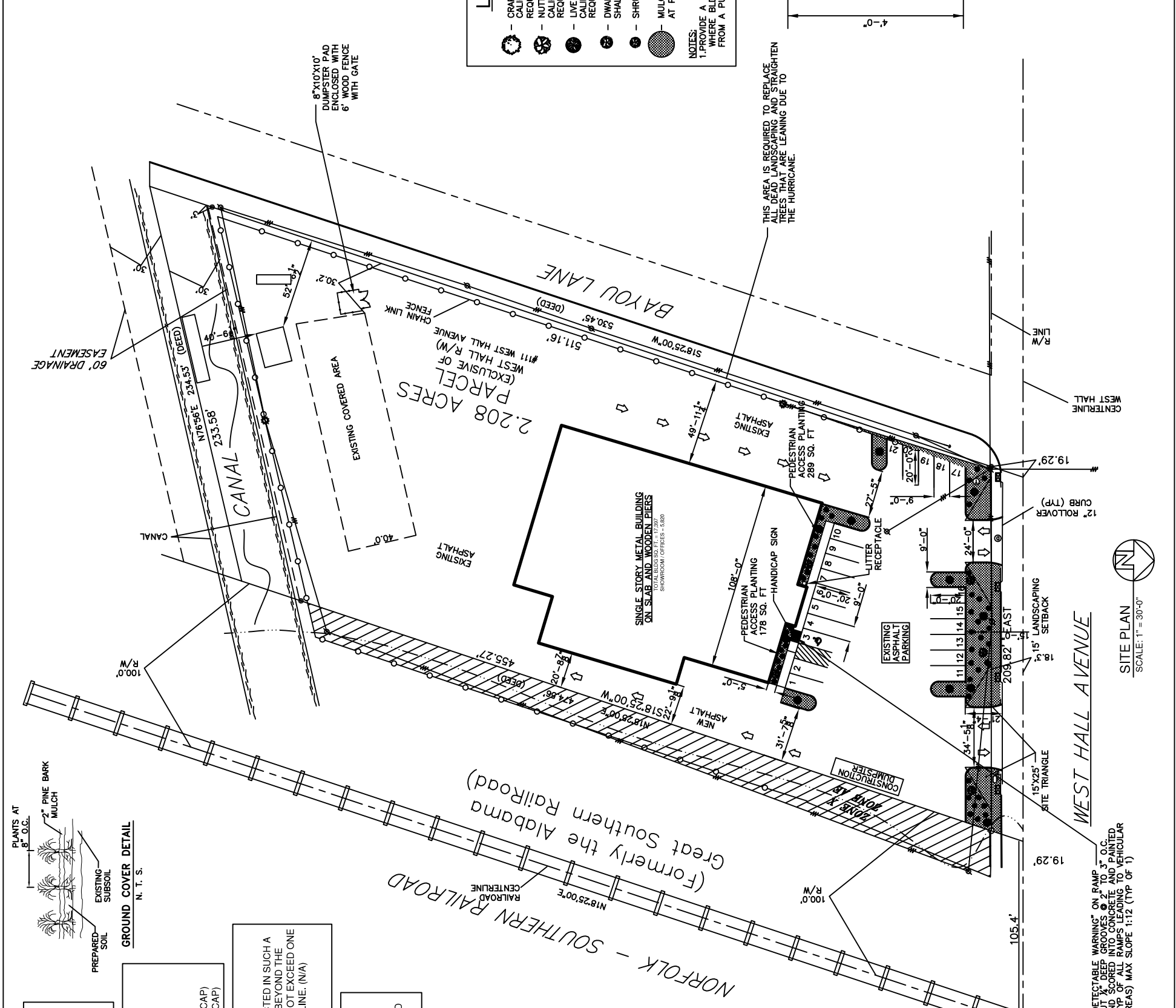
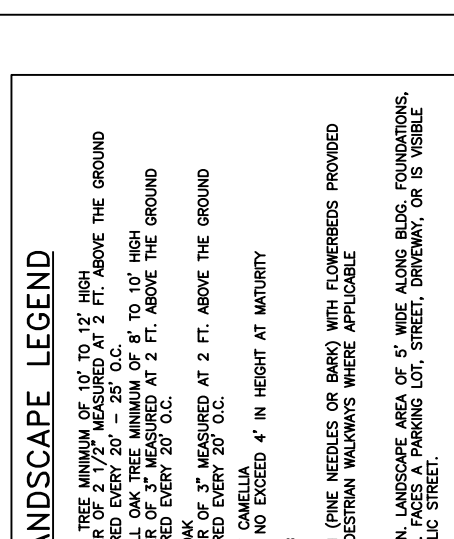
LEGEND

NEW BUILDING	SEWER MANHOLE, SEWER LINE
---	WATER MANHOLE, WATER LINE
---	GAS MANHOLE, GAS LINE
---	TELE. MANHOLE, TELE. LINE
---	DRAIN MANHOLE, DRAIN LINE
---	POWER POLE / OVERHEAD LINES
---	ELECTRIC, TELEPHONE, CABLE TV
---	ELEC. TOWER / OVERHEAD LINES
---	CATCH BASIN
---	LIGHT STANDARD
---	TRAFFIC LIGHT
---	TELE., ELEC., CATV PEDESTAL
---	GAS, WATER, ELECTRIC METER
---	GAS, WATER VALVE
---	SEWER, DRAIN CLEANOUT
---	FIRE HYDRANT
---	GUY WIRE ANCHOR
---	SIGN
---	PYLON
---	MAILBOX
---	FENCE

LANDSCAPE LEGEND

	CRAPE TREE MINIMUM OF 10' TO 12' HIGH CALIPER OF 2 1/2" MEASURED AT 2 FT. ABOVE THE GROUND REQUIRED EVERY 20' - 25' O.C.
	NUTALL OAK TREE MINIMUM OF 8' TO 10' HIGH CALIPER OF 3" MEASURED AT 2 FT. ABOVE THE GROUND REQUIRED EVERY 20' O.C.
	LIVE OAK CALIPER OF 3" MEASURED AT 2 FT. ABOVE THE GROUND REQUIRED EVERY 20' O.C.
	DWARF CAMELLIA SHALL NOT EXCEED 4' IN HEIGHT AT MATURITY
	SHRUB
	MULCH (PINE NEEDLES OR BARK) WITH FLOWERBEDS PROVIDED AT PEDESTRIAN WALKWAYS WHERE APPLICABLE

NOTES:
 1. PROVIDE A MIN. LANDSCAPE AREA OF 5' WIDE ALONG BLDG. FOUNDATIONS, WHERE BLDG. FACES A PARKING LOT, STREET, DRIVEWAY, OR IS VISIBLE FROM A PUBLIC STREET.



LEGAL DESCRIPTION
 SURVEY OF 2.208 ACRES
 PARCEL OF LAND
 SECTION 10, T9S-R14E
 CITY OF SLIDELL,
 ST. TAMMANY PARISH, LOUISIANA

PARKING REQUIREMENTS
 SF BUILDING TOTAL 17,397 SQ. FT.
 SHOWROOM/OFFICES SQ. FT. = 5,820
 1 SPACE PER 300 SQ. FT. = 19 SPACES REQUIRED
 1 SPACE PER 5 EMPLOYEES = 2 SPACES REQUIRED
 TOTAL PARKING REQUIRED = 21 SPACES (INCLUDES 1 HANDICAP)
 TOTAL PARKING PROVIDED = 24 SPACES (INCLUDES 1 HANDICAP)

SITE LIGHTING
 EXTERIOR LIGHTING SHALL BE SHADED OR INWARDLY DIRECTED IN SUCH A MANNER SO THAT NO DIRECT LIGHTING OR GLARE BE CAST BEYOND THE PROPERTY LINE. THE INTENSITY OF SUCH LIGHTING SHALL NOT EXCEED ONE FOOT CANDLE AS MEASURED AT THE ADJUTTING PROPERTY LINE. (N/A)

SITE PLAN NOTES
 1. ROOFING MATERIAL: METAL ROOFING PANEL
 2. SIDING MATERIAL: CONVENTIONAL STUCCO VENEER
 3. UTILITIES: ALL UTILITIES SHALL BE PLACED UNDERGROUND

PEDESTRIAN ACCESS REQUIREMENTS
 PEDESTRIAN ACCESS REQUIRED: 432 SQ. FT.
 ACTUAL PEDESTRIAN ACCESS PROVIDED: 467 SQ. FT.

