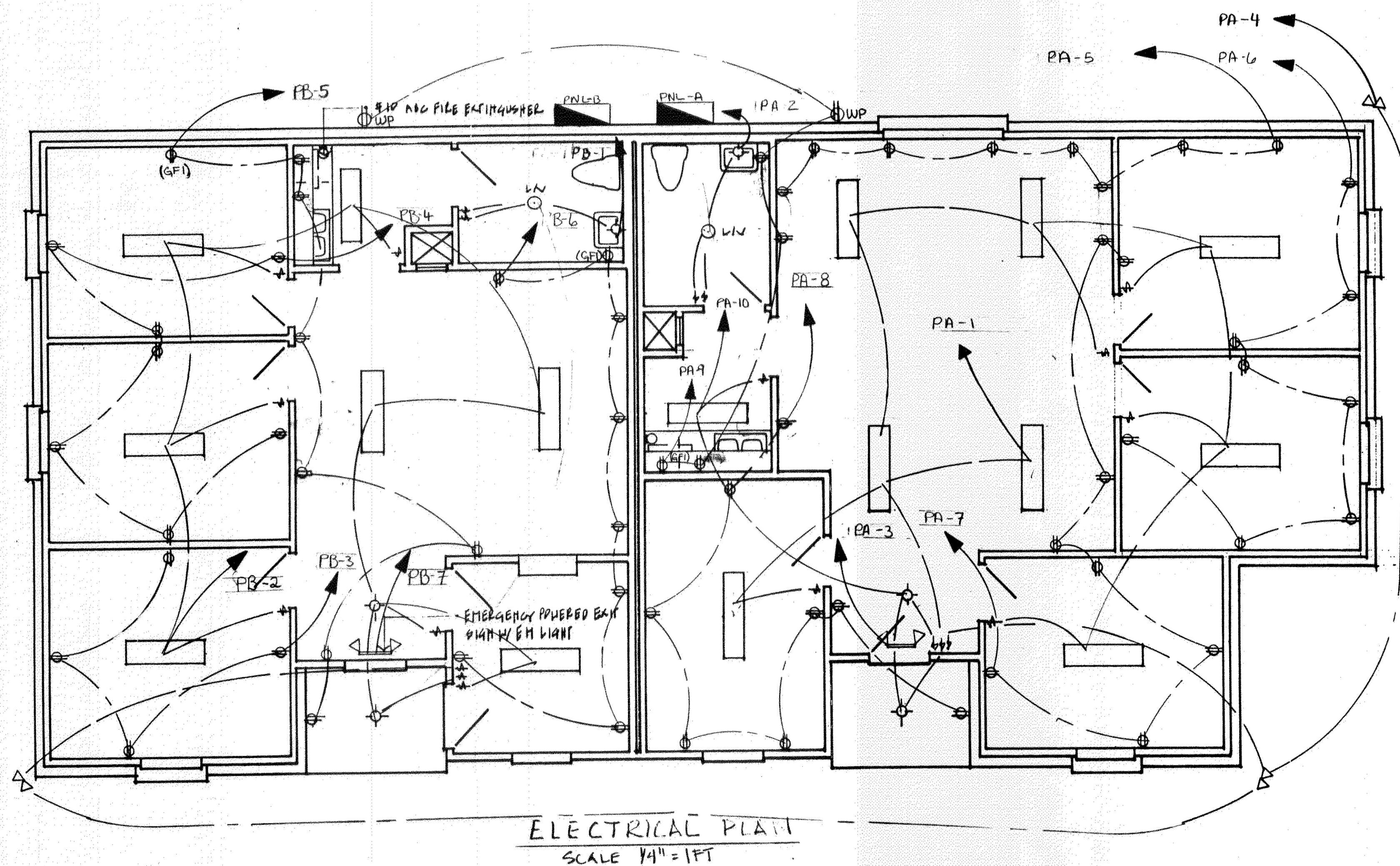
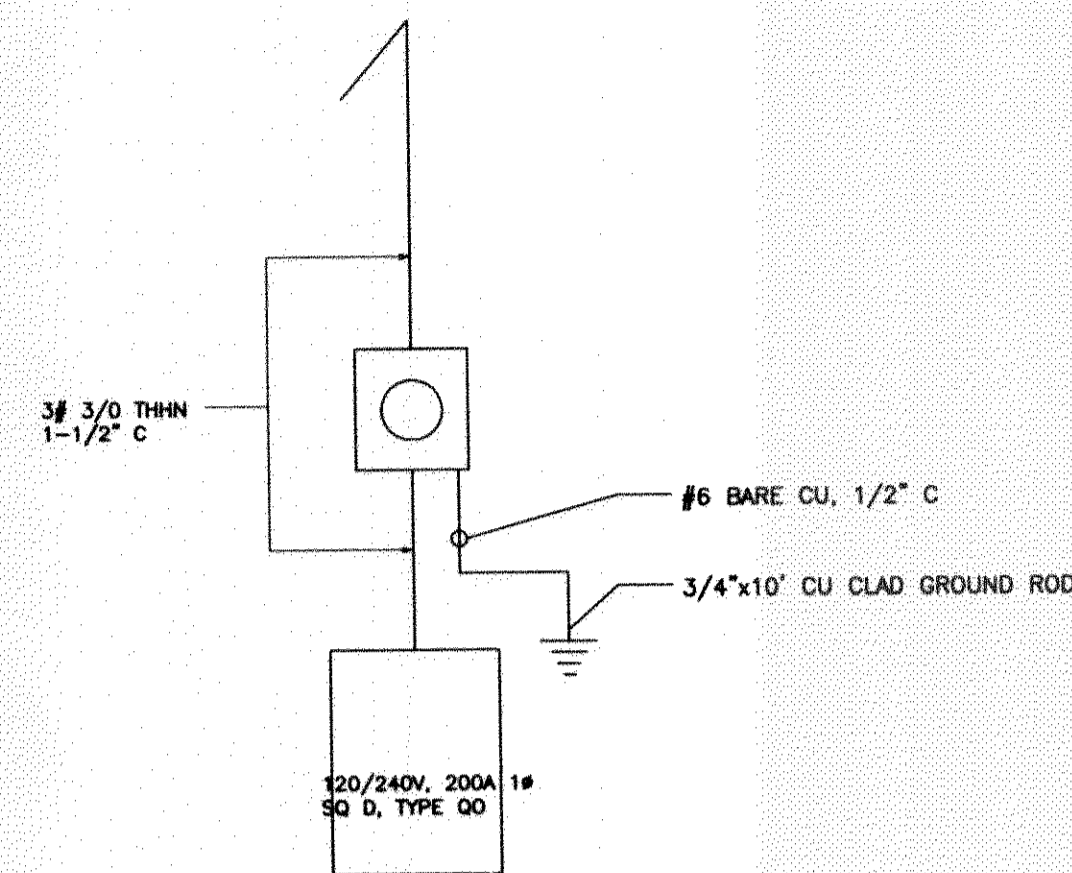


ELECTRICAL NOTES

1. ALL WORK SHALL COMPLY TO THE LATEST EDITION OF THE NATIONAL ELECTRICAL CODE, THE GOVERNING ELECTRICAL CODE, AND ALL OTHER INSPECTION DEPARTMENTS HAVING JURISDICTION. OBTAIN CERTIFICATES OR APPROVAL WHERE REQUIRED.
2. ALL MATERIALS FURNISHED SHALL BE NEW AND SHALL BE U.L. LISTED.
3. THE DRAWINGS INDICATE SIZE AND GENERAL LOCATION OF WORK. SCALE DIMENSIONS SHALL NOT BE USED. THE EXACT LOCATION AND ELEVATION OF ALL LIGHTING FIXTURES, RECEPTACLES, AND TELEPHONE OUTLETS, ETC. SHALL BE DETERMINED BY ACTUAL CONDITIONS IN THE FIELD; UNLESS OTHERWISE NOTED.
4. PRIOR TO BIDDING, CONTRACTOR SHALL VISIT THE JOB SITE AND FAMILIARIZE THEMSELVES WITH THE EXISTING CONDITIONS.
5. ELECTRICAL CONTRACTOR SHALL COORDINATE HIS WORK WITH OTHER TRADES AND WITH OTHER CONTRACTORS WHOSE WORK MAY AFFECT THIS INSTALLATION.
6. ELECTRICAL CONTRACTOR SHALL COORDINATE INCOMING ELECTRICAL SERVICE WITH UTILITY COMPANY AND INCLUDE IN HIS BID, ALL CHARGES AND FEES INCURRED IN MODIFICATIONS.
7. WHERE MORE THAN ONE SWITCH OCCURS IN THE SAME LOCATION, THEY SHALL BE INSTALLED IN A GANG TYPE BOX UNDER ONE COVER PLATE.
8. ELECTRICAL CONTRACTOR SHALL COORDINATE THE TELEPHONE INSTALLATION WITH THE TELEPHONE COMPANY AND THE GENERAL CONTRACTOR.
9. ELECTRICAL CONTRACTOR, BEFORE INSTALLING ANY OF THE WORK, SHALL SEE THAT IT DOES NOT INTERFERE WITH CLEARANCES REQUIRED FOR FINISHED COLUMNS, HUNG CEILINGS, PLASTER, PARTITIONS, WALLS, ETC. AS SHOWN IN THE ARCHITECTURAL DRAWINGS AND DETAILS. IF ANY WORK IS INSTALLED AND IT LATER DEVELOPS THAT SUCH DETAILS OR DESIGN CANNOT BE FOLLOWED, THE CONTRACTOR, AT THEIR OWN EXPENSE, SHALL MAKE SUCH CHANGES IN THE WORK AS DIRECTED BY THE ARCHITECT AS WELL AS TO PERMIT THE INSTALLATION OF THE ARCHITECTURAL WORK AS SHOWN ON THE PLANS AND DETAILS.
10. PERFORM TEST REQUIRED BY THE OWNER OR THE ENGINEER IN CONNECTION WITH THE OPERATION OF THE ELECTRICAL SYSTEM IN THE BUILDING.
11. ALL TESTS SHALL BE MADE IN ACCORDANCE WITH THE LATEST STANDARD OF THE I.E.E.E. AND THE NATIONAL ELECTRICAL CODE.
12. MINIMUM CONDUCTOR SIZE SHALL BE #12, 600V INSULATION, MINIMUM SIZE CONDUIT SHALL BE 3/4" E.M.T. FOR INTERIOR USE, AND 3/4" RIGID ALUMINUM FOR EXTERIOR USE. USE TYPE NMC CABLE IN CONTROL ROOM BUILDING FOR LIGHTS AND RECEPTACLE CIRCUITS. EXTERIOR FITTINGS SHALL BE CAST BOXES AND COVERS. INTERIOR FITTINGS SHALL BE CAST WHERE EXPOSED ON WALLS. STAMPED BOXES MAY BE USED ABOVE CEILINGS IN AIR CONDITIONED SPACES.
13. CONTRACTOR SHALL INSTALL WIRING AND OTHER CIRCUIT COMPONENTS TO MATCH EQUIPMENT ACTUALLY INSTALLED.
14. INSTALL GROUND FAULT RECEPTACLES AT RECEPTACLE LOCATIONS WITHIN 5' OF SINKS OR LAVATORIES, AND AT EXTERIOR LOCATIONS. EXTERIOR RECEPTACLES SHALL ALSO BE WEATHERPROOF.
15. BONDING AND GROUNDING SHALL BE IN ACCORDANCE WITH NFPA 70:250-23B
16. FUSES SHALL BE ITT CLASS K5, 250 VOLT, 200,000 AMP INTERRUPTING CAP.
17. PROVIDE SERVICES OF A FIRE/SMOKE DETECTION & ALARM COMPANY TO DESIGN & INSTALL ALARM SYSTEM TO MEET REQUIREMENTS OF THE STATE FIRE MARSHAL.
18. ALL ELECTRICAL, MECHANICAL, & PLUMBING PENETRATING FIRE WALLS SHALL BE FIRE CAULKED. (PENETRATIONS THROUGH RATED CONSTRUCTION SHALL BE SEALED WITH A MATERIAL CAPABLE OF PREVENTING THE PASSAGE OF FLAMES AND HOT GASES WHEN TESTED IN ACCORDANCE WITH ASTM-E814.)
19. ALL J BOXES FOR EXTERIOR SIGNS SHALL BE INSIDE BUILDING.
20. ALL HVAC AIR HANDLERS WITH ELECTRICAL HEAT STRIPS AND COMPRESSORS SHALL BE 3Ø.
21. GROUNDING OF RECEPTACLES AND FIXED ELECTRICAL EQUIPMENT IN PATIENT CARE AREAS SHALL COMPLY WITH NFPA 70:517.13 (A) AND (B).



PANEL A
LOCATION: SHOP
FEEDER SOURCE: CLECO

VOLTAGE: 120/240V, 200A 1Ø 3W
ENCLOSURE: SURFACE MOUNTED W/EQUIPMENT GRND BAR
200A MAIN CIRCUIT BREAKER
SQUARE D TYPE QO LOAD CENTER

CIR. NO.	LOAD DESCRIPTION	BREAKER AMP	LOAD (VA)		LOAD (VA)		BREAKER POLE	LOAD AMP	LOAD DESCRIPTION	LOCATION	
			Ø	3Ø	Ø	3Ø					
1	OFFICE LIGHTS	20	1	1800			1	20	BATH LIGHTS AND VENT	2	
3	EMERGENCY LIGHTS	20	1	300			1	20	EXTERIOR LIGHTS	4	
5	OUTLETS	20	1	1280			1	20	OUTLETS	6	
7	OUTLETS	20	1	1280			1	20	OUTLETS	8	
8	OFFICE OUTLETS	20	1	960			1	20	ENTRY LIGHTS / LOUNGE	10	
11	HEATER W/SAFETY SWITCH	60	2	18000			4000	2	3Ø	WATER HEATER	12
13	SPARE	20	1	-			-	1	20	SPARE	14
15	SPARE	20	1	-			4000	2	60	A/C UNIT	16
17	SPARE	20	1	-			-	1	20	SPARE	18
18	SPARE	-	-	-			-	-	-	SPARE	20
21	SPARE	-	-	-			-	-	-	SPARE	22
19	SPARE	-	-	-			-	-	-	SPARE	23
23	SPARE	-	-	-			-	-	-	SPARE	24
TOTAL CONNECTED LOAD (VA)		A=28,720		B=28,000		GROUND BUS		GROUND WIRE (Ø)			

PANEL B
LOCATION: SHOP
FEEDER SOURCE: CLECO

VOLTAGE: 120/240V, 200A 1Ø 3W
ENCLOSURE: SURFACE MOUNTED W/EQUIPMENT GRND BAR
200A MAIN CIRCUIT BREAKER
SQUARE D TYPE QO LOAD CENTER

CIR. NO.	LOAD DESCRIPTION	BREAKER AMP	LOAD (VA)		LOAD (VA)		BREAKER POLE	LOAD AMP	LOAD DESCRIPTION	LOCATION	
			Ø	3Ø	Ø	3Ø					
1	BATHROOM LIGHTS / VENT	20	1	800			1	20	OFFICE LIGHTS	2	
3	OUTLETS	20	1	840			1	20	OUTLETS	4	
5	OFFICE OUTLETS	20	1	1280			1	20	OFFICE OUTLETS	6	
7	EXIT LIGHTS / SIGN	20	1	300			1	20	EXIT LIGHTS / SIGN	8	
8	HEATER W/SAFETY SWITCH	60	2	18000			4000	2	40	A/C UNIT	10
11	SPARE	20	1	-			4500	2	20	WATER HEATER	12
13	SPARE	20	1	-			-	1	20	SPARE	14
15	SPARE	20	1	-			-	1	20	SPARE	16
17	SPARE	20	1	-			-	1	20	SPARE	18
18	SPARE	-	-	-			-	-	-	SPARE	20
21	SPARE	-	-	-			-	-	-	SPARE	22
19	SPARE	-	-	-			-	-	-	SPARE	23
23	SPARE	-	-	-			-	-	-	SPARE	24
TOTAL CONNECTED LOAD (VA)		A=28,360		B=25,760		GROUND BUS		GROUND WIRE (Ø)			

ELECTRICAL

BELL-BOY PROPERTIES
LOG #13 VILLAGE SQ. SUB.
SLIDELL, LOUISIANA

OFFICE BUILDING

DAMMON ENGINEERING, INC.
1095 FLORIDA AVENUE 985-649-5832 SLIDELL, LA. 70458
DAMMONENGINEERING.COM

SCALE: AS NOTED

FILE:

JOB NO.

DATE: 1-17-07

SHEET

E-1

OF