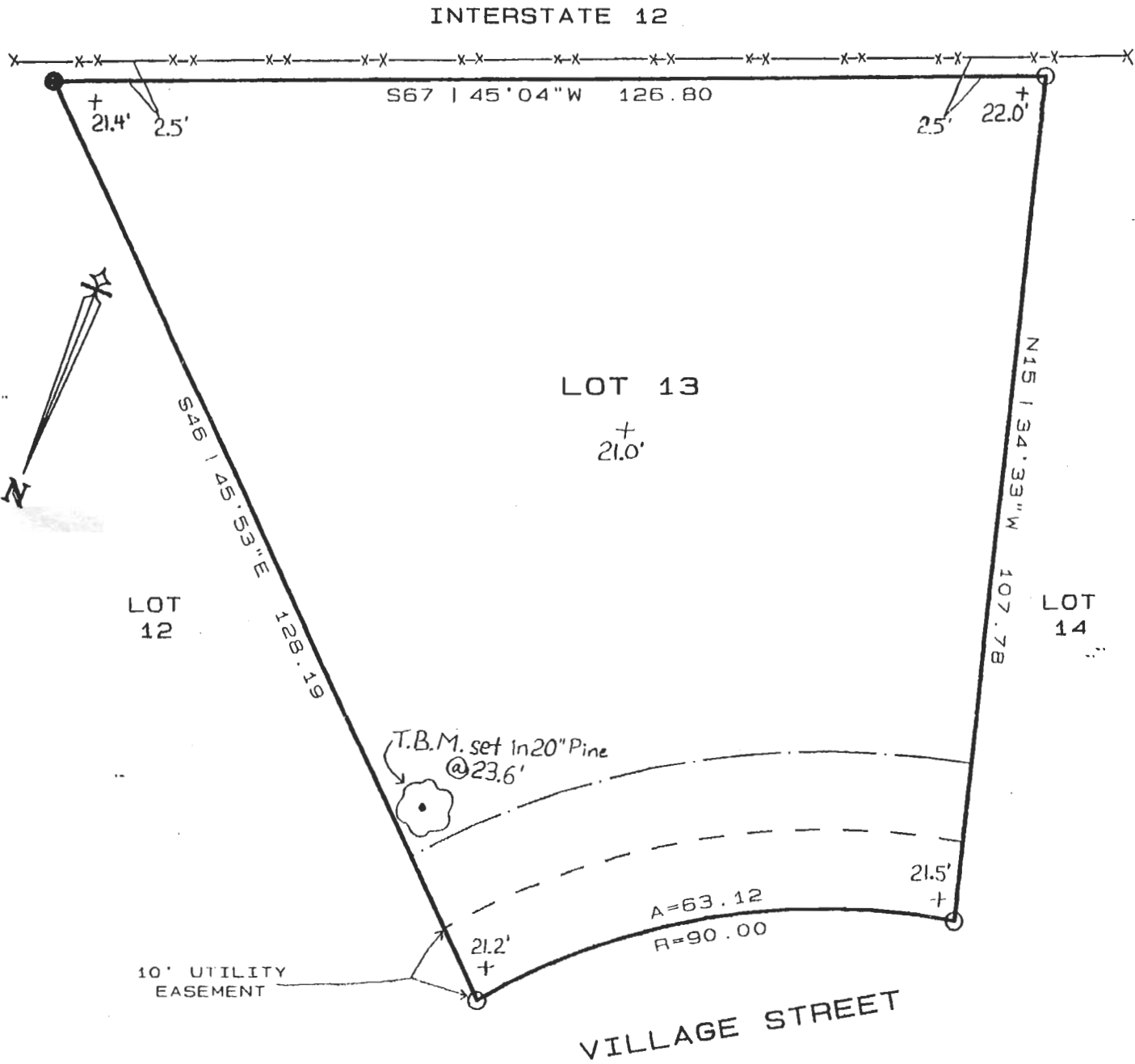


LEGAL DESCRIPTION:

LOT 13, VILLAGE SQUARE SUBDIVISION, according to the plat thereof as recorded in Map File No. 785B, Clerk of Court, St. Tammany Parish, Louisiana.



CERTIFIED TO:
CLAY COMPTON

LEGEND:
○ SET 1/2" IRON ROD FOUND IRON ROD