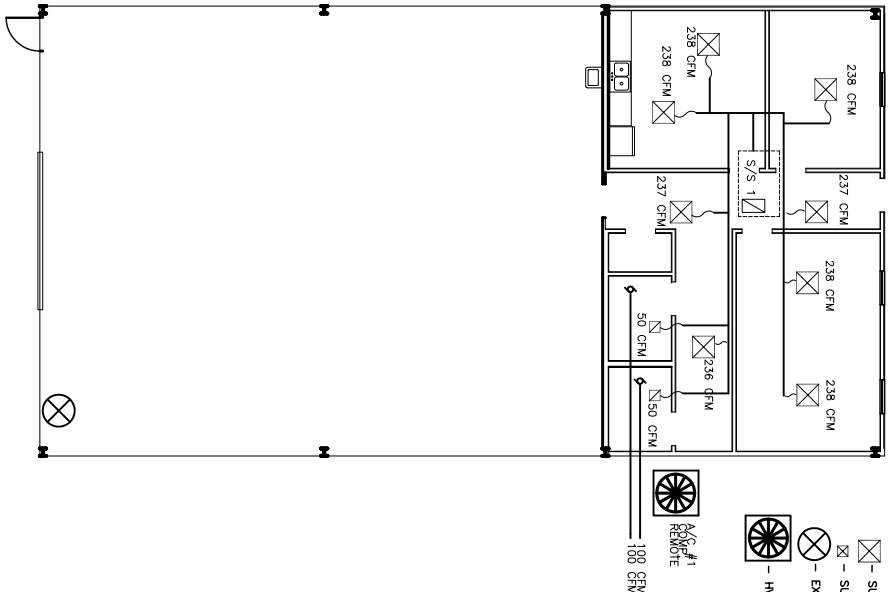
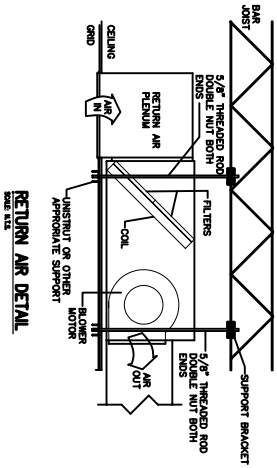


HVAC NOTES

1. CONCEAL OUTDOORWORK TO BE IN 3/8" CLASS 1 FIBERGLASS DUCTBOARD. DUCTS SHALL BE SIZED TO LIMIT MAIN DUCTS TO 1000 CFM & SECONDARY DUCTS TO 800 CFM. TO BE INSTALLED PER SMACNA STANDARDS.
2. EXPOSED DUCTWORK TO BE GALVANIZED SHEET METAL PER SMACNA STANDARDS. LINE WITH NEOPRENE COATED 10-13 POUNDS PER CUBIC FOOT DUCT INSULATION.
3. ROUND FLEXIBLE DUCT TO BE UL-81 CLASS 1 AIR DUCT MATERIALS.
4. DUCT SIZES SHOWN ARE CLEAR INSIDE DIMENSIONS.
5. IN ALL SYSTEMS OVER 2000 CFM AND LESS THAN 15,000 CFM, SMOKE DETECTORS SHALL BE INSTALLED IN ACCORDANCE WITH NFPA 72E IN THE RETURN DUCT DOWNSTREAM OF THE AIR HANDLING UNIT AND ALL FILTERS TO AUTOMATICALLY STOP THE FAN.
6. PROVIDE UL LISTED 1/2" F FUSES IN RETURN AIR OF EACH SYSTEM UNDER 2000 CFM TO SHUT DOWN THE FAN IN THE EVENT OF FIRE.
7. PROVIDE UL RATED FIRE DAMPERS WHERE REQUIRED AT ALL DUCT PENETRATIONS OF FIRE-RATED ASSEMBLIES AND WHERE REQUIRED BY CODE INCLUDING OUTSIDE AIR INTAKES.
8. CONDENSATE DRAINS TO BE PVC PIPE RUN TO PLUMBERS' FLOOR WITHIN FEET OF AIR HANDLING UNITS.
9. ALL AIR HANDLING SYSTEMS TO BE BALANCED TO ASSURE PROPER AIR FLOWS PER PLANS.
10. ALL THERMOSTATS TO BE AUTOMATIC CHANGEOVER WITH HEAT SWITCH.
11. EXHAUST FAN EQUAL TO BROWN MODEL NO. 100 CF OR EQUAL. FAN SHALL BE CONTROLLED BY A SWITCH ON THE WALL IN THE SAME LOCATION AS LIGHT SWITCHES. PROVIDE BACK DRAFT DAMPER.
12. PROVIDE AND INSTALL WATER PROOF GRILLE VEIL IN PROPER ROOF LOCATION FOR PLUMBING EXTERIOR EXHAUST.
13. ALL SUPPLY AIR VENTS SHALL BE EQUIPPED WITH AIR CONTROL DAMPERS.
14. LOCATE OUTDOOR UNITS AS SHOWN ON ARCH DWGS.
15. REFRIGERANT LINES SHALL BE SIZED BY UNIT MANUFACTURER AND INSTALLED ACCORDING TO MANUFACTURER'S INSTRUCTIONS.
16. FRESH AIR SHALL BE SUPPLIED TO EACH AIR HANDLER THROUGH EXTERIOR WALL DUCT SUPPLIED WITH A CONTROL DAMPER.
17. INSTALL FIRE DAMPER WHERE S.A. & R.A. DUCTS PENETRATE HOUR-RATED CEILING.
18. ALL ELECTRICAL, MECHANICAL, AND PLUMBING PENETRATING FIRE WALLS SHALL BE FIRE CALKED. PENETRATIONS THROUGH RATED CONSTRUCTION SHALL BE SEALED WITH A MATERIAL CAPABLE OF PREVENTING THE PASSAGE OF FLAME AND HOT GASES WHEN TESTED IN ACCORDANCE WITH ASHRAE 91-9.

EXHAUST FAN SCHEDULE				
LOG	CFM	VOLTAGE	TYPE	MANF.
175	100	120	VENT	BROWN

A/C UNIT SCHEDULE - SHOWROOM						
NO.	TOTAL TONNAGE	CFM	COOLING CAP.	HEATING CAP.	REFRIGERANT	COMMENTS
1	15	1200	15	1200	1/2"	1/2" R410A



MECHANICAL PLAN
SCALE: 3/16"=1'-0"

LEGEND

- ROUND FLEXIBLE DUCT
- ⊗ EXHAUST FAN
- ⊠ SUPPLY DIFFUSER 24"x24"
- ⊞ SUPPLY DIFFUSER 12"x12"
- ⊙ EXHAUST FAN
- ⊞ HVAC

<p>PARISH CAB DAMMON ENGINEERING, INC. 1096 FLORIDA AVENUE 986-640-8888 SLIDELL, LA. 70468 DAMMONENGINEERING.COM</p>	<p>MECHANICAL PLAN PARISH CAB 1189 FREMAUX AVENUE SLIDELL, LOUISIANA</p>	<p>SCALE(S) NOTED FILE: JOB NO. 1647 DATE: 3-17-07 SHEET M-1 OF</p>
---	---	---