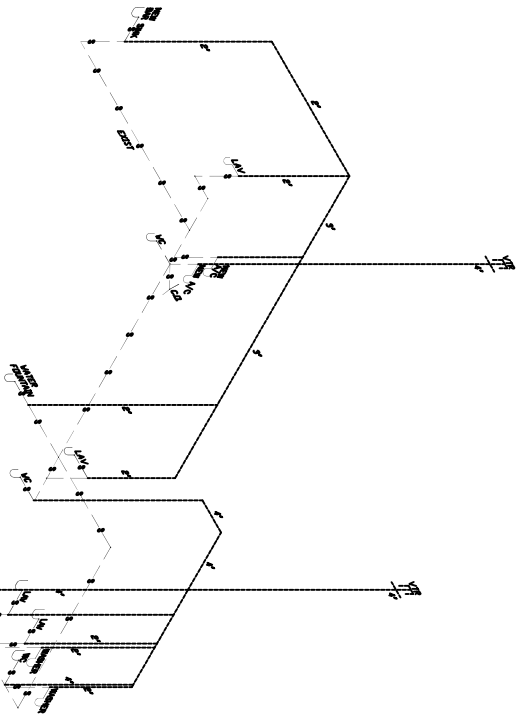


PLUMBING PLAN
SCALE: 1/8"=1'-0"

LEGEND
 --- HOT WATER LINE
 --- COLD WATER LINE
 --- DRAIN LINE

- PLUMBING NOTES**
1. PROVIDE ALL LABOR, MATERIAL AND EQUIPMENT FOR A COMPLETE OPERATING SYSTEM. THE SYSTEM SHALL INCLUDE HOT AND COLD WATER PIPING, SEWER AND VENT PIPING, INSULATION, WATER HEATER, HANGERS, VALVES, AND ALL SUPPLIES WITHOUT ANY RESTRICTIONS TO VOLUME. CUT AND PATCH AS REQUIRED TO INSTALL PIPES.
 2. ALL WORK AND MATERIAL TO COMPLY STRICTLY TO THE LATEST LOCAL CITY, PARISH, STATE, AND NATIONAL GOVERNING CODES.
 3. CONTRACTOR IS TO FIELD VERIFY ALL EXISTING UTILITY LOCATIONS, ELEVATIONS, AND SIZES PRIOR TO COMMENCING ANY WORK. CONTRACTOR SHALL PAY NECESSARY FEES FOR THE UTILITIES CONNECTIONS.
 4. CONTRACTOR TO BE RESPONSIBLE TO VERIFY ANY EXISTING INVERTS AND SET NEW INVERTS OF SEWAGE AND DRAINAGE PIPES.
 5. SEWAGE LINES 3" AND SMALLER SHALL BE SLOPED 1/4" PER FOOT AND LINES 4" AND LARGER SHALL BE 1/8" PER FOOT.
 6. TEST ALL PIPING AT REQUIRED PRESSURE.
 7. ALL PLUMBING SHALL BE CLOSELY COORDINATED WITH STRUCTURAL, MECHANICAL, AND ELECTRICAL SYSTEMS TO INSURE NO HEADS WILL COLLIDE WITH EACH OTHER.
 8. DO NOT SCALE DRAWINGS. SEE DIMENSIONS ON ARCHITECTURAL DRAWINGS FOR EXACT LOCATIONS OF DOORS, WINDOWS, WALLS, FIXTURES, ETC.
 9. ALL WATER MAINS AND PIPING NOT SHOWN FOR CLARITY, ALL LOCATIONS FIELD VERIFIED.
 10. DOMESTIC HOT AND COLD WATER PIPING AND FITTINGS UNDER SLAB SHALL BE ASTM B88 COPPER WATER TUBE TYPE "1" HARD DRAWN WITH COPPER PRESSURE TYPE FITTINGS, ANSI B16.22. THE JOINTS SHALL BE SOLDERED TYPE USING ASTM B32 ALLOY GRADE 95A (95-5) SOLDER.
 11. SOIL, WASTE, VENT PIPING AND FITTINGS ABOVE THE SLAB SHALL BE SERVICE WEIGHT CAST IRON PIPE WITH BELL AND SPIGOT ENDS AND ONE PIECE NEOPRENE INSERT TYPE GASKET. USE PVC SCHEDULE 40 OR ABS DWV PIPES AND FITTINGS WHERE INDICATED BY CODE.



PLUMBING RISER DIAGRAM
SCALE: 1/8"=1'-0"

--- DRAIN PIPE (EXIST)
 --- VENT PIPE (EXIST)

PLUMBING FIXTURE SCHEDULE

NAME	DESCRIPTION	TYPE	HEIGHT TO FINISH	NOTES
WC	TOILET	WC	6" F. FINISH	
VB	VANITY SINK	VB	3" F. FINISH	
SH	SHOWER	SH	6" F. FINISH	
BT	BATH TUB	BT	6" F. FINISH	
ST	SINK	ST	3" F. FINISH	
WC	TOILET	WC	6" F. FINISH	
VB	VANITY SINK	VB	3" F. FINISH	
SH	SHOWER	SH	6" F. FINISH	
BT	BATH TUB	BT	6" F. FINISH	
ST	SINK	ST	3" F. FINISH	

12. ALL WATER PIPING AND FITTINGS SHALL BE INSULATED WITH 1/2" THICK FIBERGLASS INSULATION & JACKET.
13. ALL ELECTRICAL, MECHANICAL, AND PLUMBING PENETRATING FIRE WALLS SHALL BE FIRE CAULKED. (PENETRATIONS THROUGH RATED CONSTRUCTION SHALL BE SEALED WITH A MATERIAL CAPABLE OF PREVENTING THE PASSAGE OF FLAMES AND HOT GASES WHEN TESTED IN ACCORDANCE WITH ASTM-E814.)
14. ALL PLUMBING LINES SHOWN ARE DRAWN DIAGRAMATIC.
15. REPLACE ALL TOILET SEATS AND BATHROOM ACCESSORIES.
16. DOMESTIC WATER PIPING AND FITTINGS ABOVE THE SLAB SHALL BE ASTM B88 COPPER WATER TUBE TYPE "1" HARD DRAWN WITH COPPER PRESSURE TYPE FITTINGS, ANSI B16.22. THE JOINTS SHALL BE SOLDERED USING ASTM B32, ALLOY GRADE 95A (95-5) SOLDER.
17. CONTRACTOR SHALL NOT MAKE ANY OPENINGS INTO THE CONCRETE FLOOR UNTIL APPROVED BY THE ENGINEER.
18. MECHANICAL CONTRACTOR SHALL CONSULT WITH THE ENGINEER TO DETERMINE HVAC DRAIN LOCATION.