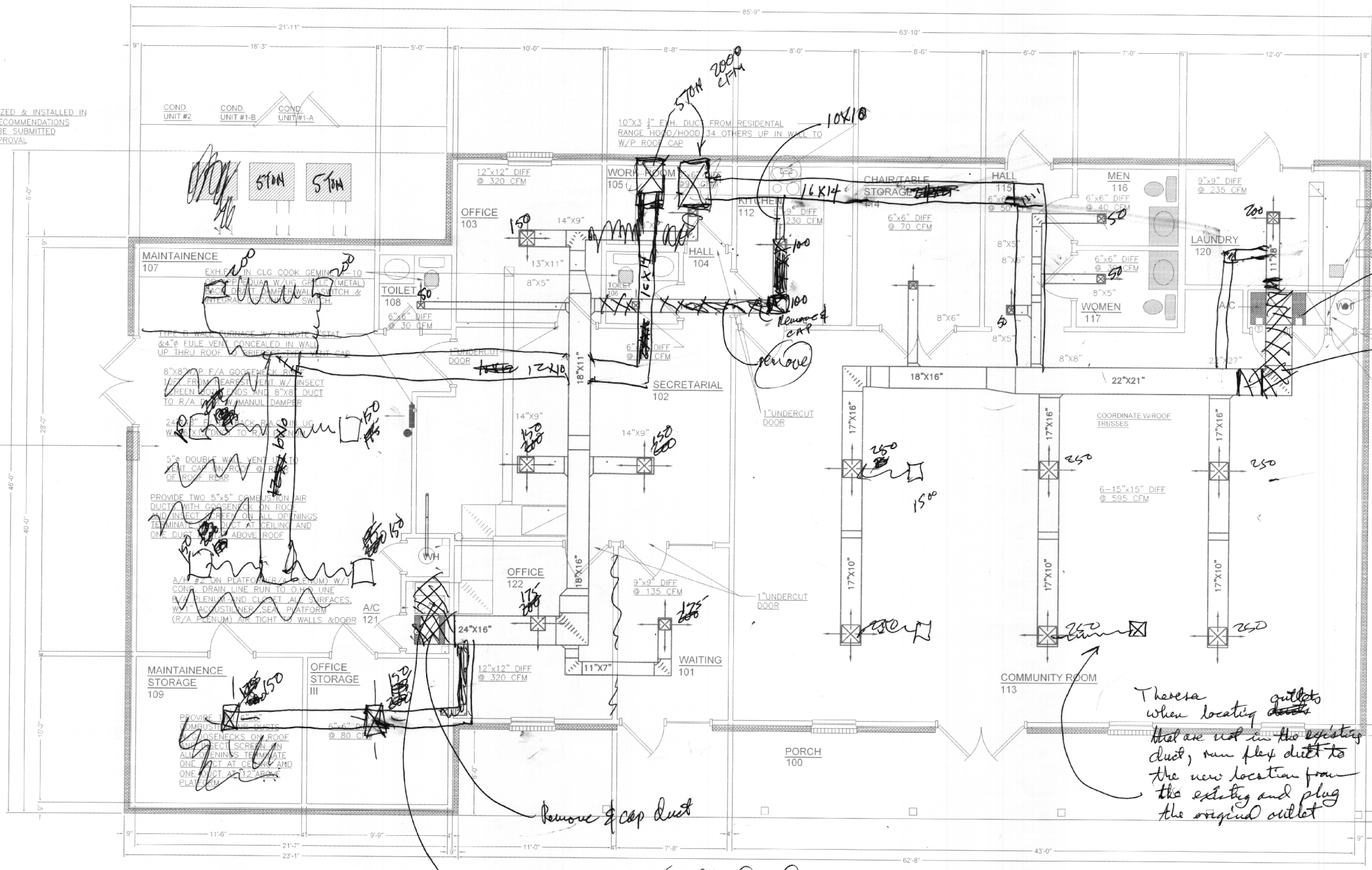


[Handwritten signature]

REFRIG. LINES SHALL BE SIZED & INSTALLED IN ACCORDANCE TO MFG.'S RECOMMENDATIONS. SIZE AND ROUTING SHALL BE SUBMITTED ENGINEER'S OFFICE FOR APPROVAL.

PTAC UNIT IN WALL W/TOP @TOP OF DOOR



12"x12" W/P F/A GOOSENECK IN ROOF 10 FT FROM NEAREST VENT W/ INSECT SCREEN BOTH ENDS AND 12"x12" DUCT TO R/A PLENUM W/ MANUL DAMPERS

PROVIDE TWO 9"x9" COMBUSTION AIR DUCTS WITH GOOSENECK ON ROOF AND INSECT SCREEN ON ALL OPENINGS. TERMINATE ONE DUCT AT CEILING AND ONE DUCT AT 12" ABOVE ROOF.

6" DRYER VENTS TO W/P WALL CAP W/BACKDRAFT DAMPER. COORDINATE SIZE AND LOCATION WITH DRYERS.

EXH.FAN IN UG COOK GEMINE 5-15 OR APP. EQUAL W/UG GRILLE (METAL) BACK DRAFT DAMPER, WALL SWITCH & INTEGRAL DISCONNECT SWITCH.

Remove old A/C units. Remove base to exterior to bldg.

Remove & cap duct

A/H#1 ON PLATFORM (R/A PLENUM) W/1 COND. DRAIN LINE RUN FROM FA R/A#2 COIL TO O.H.D. SEAL PLATFORM R/A PLENUM AIR TIGHT TO WALLS & DOOR LINES R/A PLENUM & CLOSET. ALL SURFACES ACOUSTIC LINER.

60"x24" FILTERBACK R.A.G. IN WALL BELOW PLATFORM PROVIDE 1" HOUR FIRE DAMPER UL LISTED BEHIND R/A GRILLE.

A/H#2 ON PLATFORM (R/A PLENUM) W/1 COND. DRAIN LINE RUN TO O.H.D. LINE R/A PLENUM AND CLOSET. ALL SURFACES W/1" ACOUSTIC LINER. SEAL PLATFORM (R/A PLENUM) AIR TIGHT TO WALLS & DOOR.

These are locating outlets that are not in the existing duct, run flex duct to the new location from the existing and plug the original outlet

These are to be removed and old units removed

add our A/c notes

OLMC FLOOR PLAN

FLOOR PLAN - OLMC
MARTIN LUTHER KING DRIVE
SLIDELL, LOUISIANA

HOUSING AUTHORITY OF THE CITY OF SLIDELL

DAMMON ENGINEERING, INC.

1095 FLORIDA AVENUE 985-649-5832 SLIDELL, LA. 70458
DAMMONENGINEERING.COM

SCALE: 1/4"
FILE:
JOB NO.
DATE: 02-15-07
SHEET
M-3
OF 17