



**DAMMON**  
ENGINEERING, INC.

**EMMETT**  
**DAMMON**

**ARCHITECT**  
**ROBERT**  
**WILTSE**

1095 FLORIDA AVENUE  
SLIDELL, LA, 70458  
985-649-5832

WEBSITE:  
WWW.DAMMONENGINEERING.COM

EMAIL:  
DAMMONENG@BELLSOUTH.NET

ARCHITECTURE  
ENGINEERING  
STUDIES  
PLANNING  
INVESTIGATION  
EXPERT WITNESS

**NEW OFFICE**  
**BUILDING**

K.B. KAUFMANN  
TERRACE AVENUE  
SLIDELL, LA

**BUILDING**  
**ELEVATIONS**

REV:

SCALE: AS NOTED

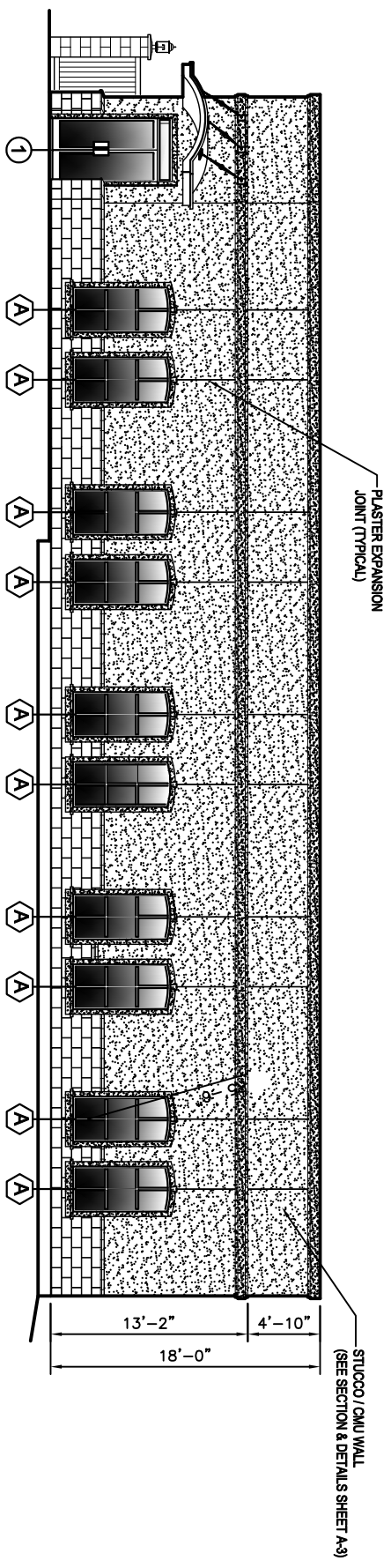
JOB#: 1871

DATE: 10-31-07

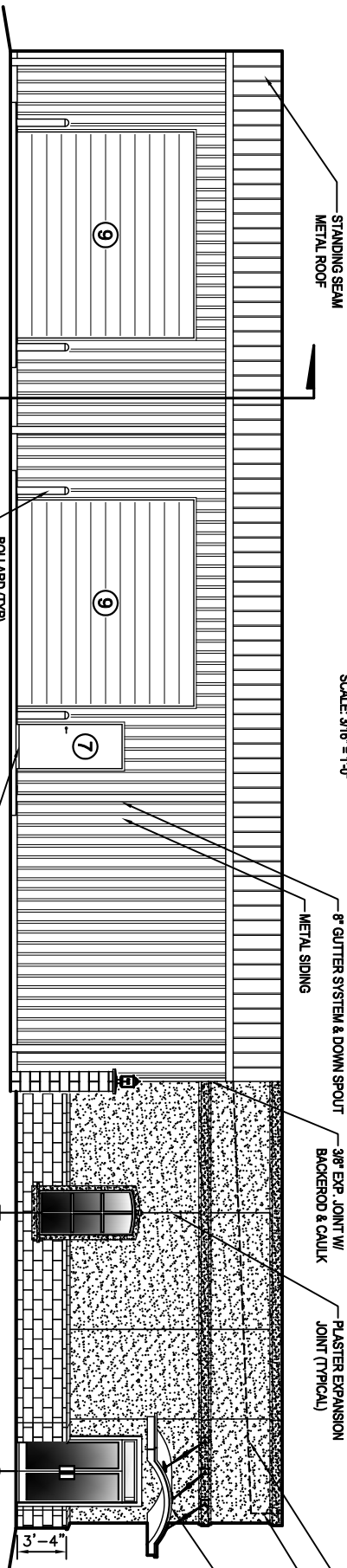
SHEET

**A-2**

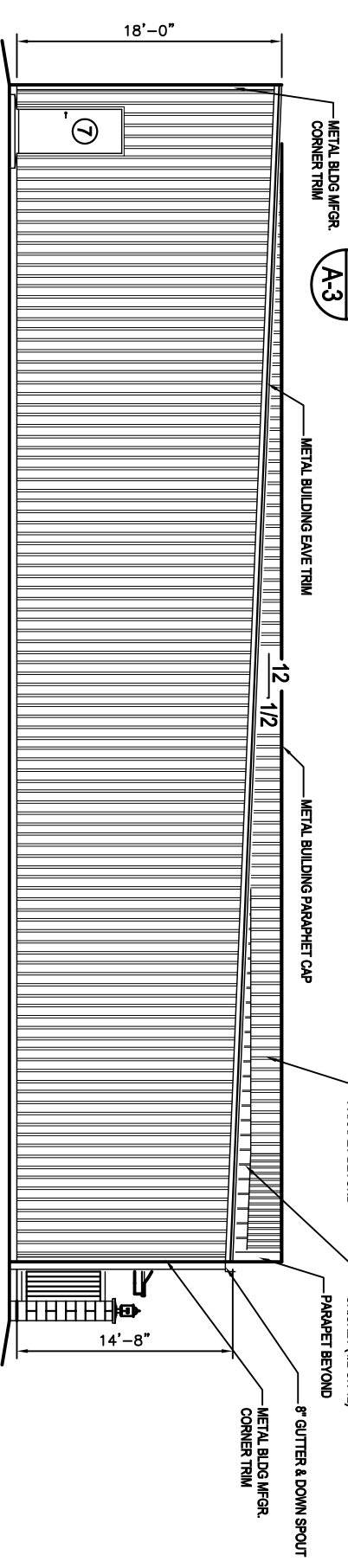
OF



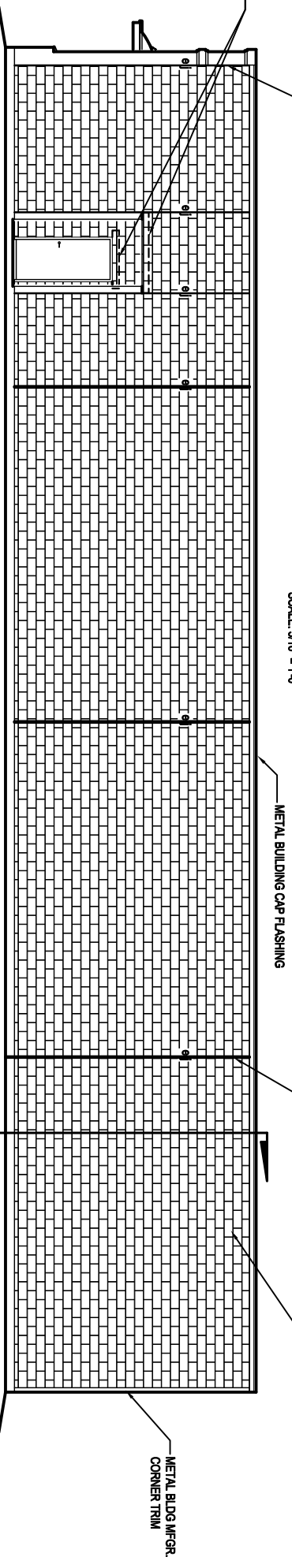
**FRONT ELEVATION**  
SCALE: 3/16" = 1'-0"



**LEFT SIDE ELEVATION**  
SCALE: 3/16" = 1'-0"



**REAR ELEVATION**  
SCALE: 3/16" = 1'-0"



**RIGHT SIDE ELEVATION**  
SCALE: 3/16" = 1'-0"

PROVIDE 8" U-BLOCK LINTEL W/ CONT. #5 REINFORCING STEEL & 3000 P.S.I. FEA GRAVEL CONC. NON-RESTRAL FLASHING & OPEN HEAD WEERS @ 16" O.C.

METAL BLDG MFGR. CORNER TRIM