



DAMMON
ENGINEERING, INC.

EMMETT
DAMMON

ARCHITECT
ROBERT
WILTSE

1095 FLORIDA AVENUE
SLIDELL, LA, 70458
985-649-5832

WEBSITE:
WWW.DAMMONENGINEERING.COM

EMAIL:
DAMMONENG@BELL.SOUTH.NET

ARCHITECTURE
ENGINEERING
STUDIES
PLANNING
INVESTIGATION
EXPERT WITNESS

NEW OFFICE
BUILDING

K.B. KAUFMANN
TERRACE AVENUE
SLIDELL, LA

REFLECTED
CEILING PLAN

REV:

SCALE: AS NOTED

JOB#: 1871

DATE: 10-31-07

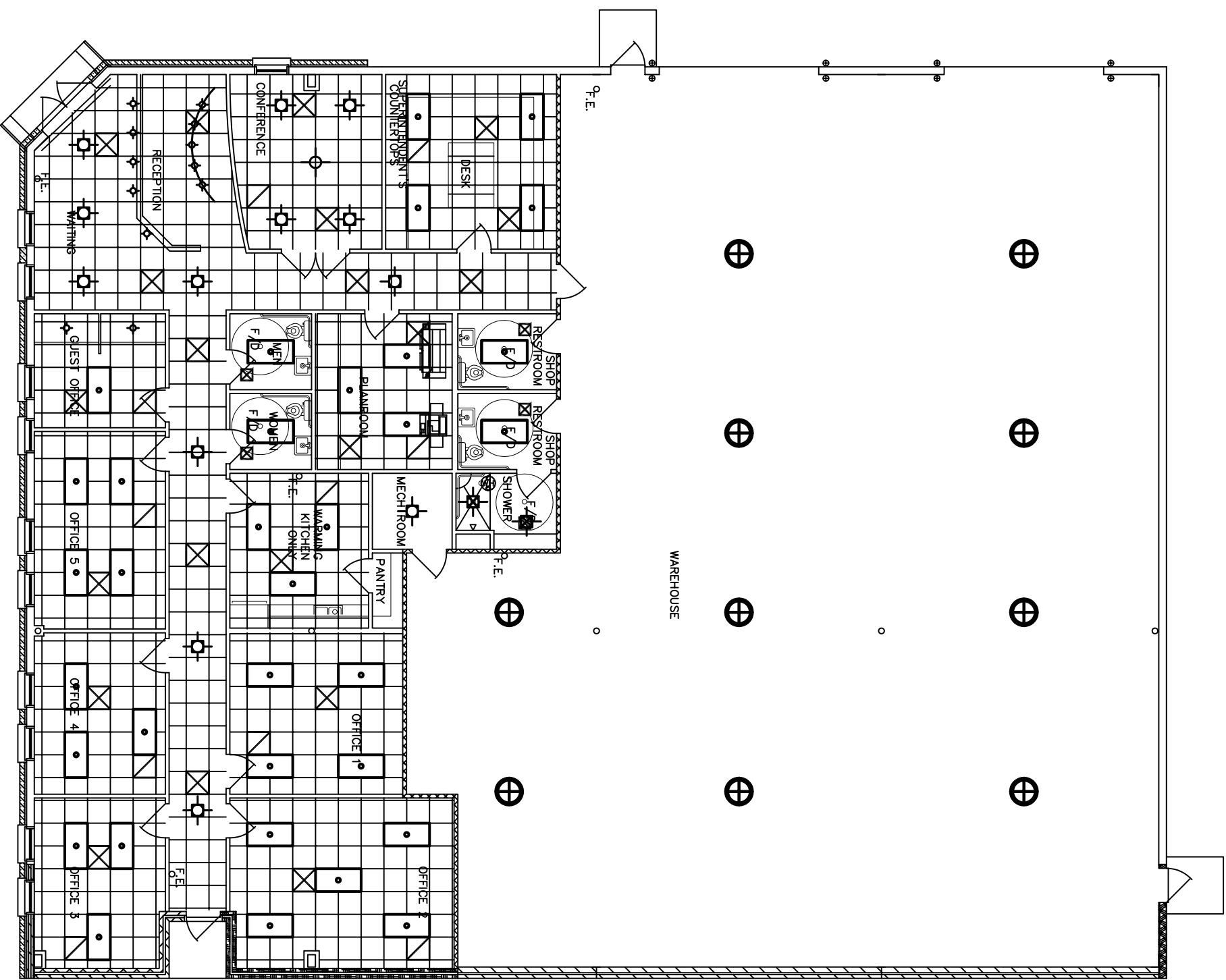
SHEET

A-4

OF

CEILING FIXTURE SCHEDULE			
A/C REGISTER		AIR RETURN	
HIGH BAY LIGHTS		RECESSED CAN	
3 TUBE FLUORESCENT		GENERIC FIXTURE	
RECESSED CAN WITH SHOWER TRIM		PENDANT	
FLEXIBLE TRACK LIGHT			

*ALL FIXTURES TO BE SELECTED BY OWNER / CONTRACTOR



REFLECTED CEILING PLAN
SCALE: 3/16" = 1'-0"