

ALT. DETAIL

1. CLAY FACE BRICK – 3-5/8" WIDE BY 2-1/4" HIGH BY 8" LONG.
- 1A. CONCRETE BLOCKS* VARIOUS DESIGNS, CLASSIFICATION D-2 (2H).
- SEE CONCRETE BLOCKS CATEGORY FOR COMPLETE LIST OF ELIGIBLE MANUFACTURERS.
2. BRICK TIES – 3/4" WIDE, 7" LONG CORRUGATED 26 MSG GALV. STEEL. SPACED ONE TO EACH BRICK EVERY SECOND COURSE OF BLOCKS.

3. MORTAR – BRICKS AND BLOCKS LAID IN FULL BED OF MORTAR NOM. 3/8" THICK OF NOT LESS THAN 2-1/4 AND NOT MORE THAN 3-1/2 PARTS CLEAN SHARP SAND TO ONE PART PORTLAND CEMENT (PREPORTIONED BY VOLUME) AND NOT MORE THAN FIFTY PERCENT HYDRATED LIME (BY CEMENT VOL). VERTICAL JOINTS STAGGERED.

4. REINFORCEMENT – PARALLEL AND DIAGONAL RODS, 0.150" MIN DIAM WITH WELDED JOINTS A MAX 16" O.C. PLACED THE WIDTH OF CONCRETE BLOCK WALL IN EVERY SECOND COURSE OF BLOCKS ALTERNATELY WITH BRICK TIES.

5. CONCRETE BLOCKS* – NOM. 4" WIDE.
- OLDCASTLE PRECAST INC, DBA CONCRET BLOCKS – (ALTERNATE TO ITEM 5) – VARIOUS DESIGNS CLASSIFICATION D-2 (2H). SEE CONCRETE BLOCKS CATEGORY FOR LIST OF ELIGIBLE MANUFACTURERS.

6. FOAMED PLASTIC* – (OPTIONAL – NOT SHOWN WHIT CLAY FACE BRICK DETAIL) RIGID POLYSTYRENE INSULATION FOR USE BETWEEN BRICK AND OR CONCRETE BLOCKS. ONE OR MORE LAYERS OF RIGID EXTRUDED POLYSTYRENE INSULATION, 4" THICK MAX HAVING 1" MIN AIR SPACE WITH FACE BRICK OR BLOCKS.

THE DOW CHEMICAL COMPANY

OC CELFORTEC INC

OWENS CORNING SPECIALTY AND FOAM

PRODUCTS – TYPE 150 OR 250.

- 6A. FOAMED PLASTIC* – (OPTIONAL – NOT SHOWN WITH CLAY FACE BRICK DETAIL), RIGID POLYISOCYANURATE INSULATION FOR USE BETWEEN BRICK AND / OR CONCRETE BLOCKS. ONE OR MORE LAYERS OF RIGID EXTRUDED POLYISOCYANURATE INSULATION, 4" THICK MAX HAVING 1" MIN AIR SPACE WITH FACE BRICKS OR BLOCKS.

THE DOW CHEMICAL COMPANY – TYPE THERMIK

- 6B. FOAMED PLASTIC* – (OPTIONAL – NOT SHOWN WITH CLAY FACE BRICK DETAIL), TWO COMPONENT FOAMED PLASTIC FORMED FROM MCFI 11-001 OR NCFI-002, SPRAY APPLIED BETWEEN BRICK AND / OR CONCRETE BLOCKS AT A NOMINAL DENSITY OF 2.1 PCF, 4" THICK MAX, HAVING A 1" MIN AIR SPACE WITH FACE BRICK OR BLOCKS.

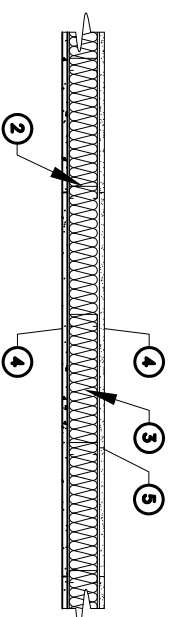
NORTH CAROLINA FOAM INDUSTRIES, DIV

OF BARNHARDT MFG.

*BEARING THE UL CLASSIFICATION MARK

LAST UPDATED ON 2004-08-13

Fire Resistance Ratings – ANSI/UL 263
See General Information for Fire Resistance Ratings – ANSI/UL 263
Design No. U465
September 27, 2005
NONBEARING WALL RATING – 1 HR.



1. FLOOR AND CEILING RUNNERS – (not shown) – Channel shaped runners, 3-5/8 in. wide (min), 1-1/4 in. legs, formed from min No. 25 MSG galv steel, attached to floor and ceiling with fasteners spaced 24 in. OC max.
2. STEEL STUDS – Channel shaped, 3-5/8 in. wide (min), 1-1/4 in. legs, 3/8 in. folded back returns, formed from min No. 25 MSG galv steel spaced 24 in. OC max.
3. BATTS AND BLANKETS* – (Optional) – Mineral wool or glass fiber batts partially or completely filling stud cavity.

See Batts and Blankets (BZJZ) category for names of Classified companies.

- 3A. FIBER, SPRAYED* – As an alternate to Batts and Blankets (Item 3) – Spray applied cellulose material. The fiber is applied with water to completely fill the enclosed cavity in accordance with the application instructions supplied with the product. Nominal dry density of 3.0 lb/ft³. Alternate application method: The fiber is applied with U.S. Greentiber LLC Type AD100 hot melt adhesive of a nominal ratio of one part adhesive to 6.6 parts fiber to completely fill the enclosed cavity in accordance with the application instructions supplied with the product. Nominal dry density of 2.5 lb/ft³.

- 3B. FIBER, SPRAYED* – As an alternate to Batts and Blankets (Item 3) and Item 3A – Spray applied cellulose insulation material. The fiber is applied with water to interior surfaces in accordance with the application instructions supplied with the product. Applied to completely fill the enclosed cavity. Minimum dry density of 4.3 pounds per cubic ft.

NU-WOOL CO INC – Cellulose Insulation

4. GYPSUM BOARD* – 5/8 in. thick, 4 ft wide, attached to steel studs and floor and ceiling track with 1 in. long, Type S steel screws spaced 8 in. OC, along edges of board and 12 in. OC in the field of the board. Joints oriented vertically and staggered on opposite sides of the assembly. When attached to item 6 (resilient channels) or 6A (furring channels), wallboard is screw attached to furring channels with 1 in. long, Type S steel screws spaced 12 in. OC.

AMERICAN GYPSUM CO – Types AG-C, AGX-1
BEIJING NEW BUILDING MATERIALS PUBLIC LTD CO – Type DBX-1.
BBB AMERICA INC – Types 1, EGRG, ProBoc Type X, ProBoc Type C,
BBB CANADA INC – ProBoc Type C, ProBoc Type X or ProBoc Type Abuse-Resistant.
CANADIAN GYPSUM COMPANY – Types AR, C, IP-AR, IP-X1, IP-X2, IPC-AR, SCX, SHX, WRC or WRX.
G-P GYPSUM CORP, SUB OF
GEORGIA-PACIFIC CORP – Types 5, 9, C, DAP, DD, DA, DGG, DS, GPRF6.
LAFARGE NORTH AMERICA INC – Types LGFC2, LGFC2A, LGFC6, LGFC6A, LGFC-C, LGFC-C/A,
NATIONAL GYPSUM CO – Types FSK, FSK-C, FSK-G, FSW-C, FSW-G, FSW-3, FSW-5.
PABCO BUILDING PRODUCTS L L C, DBA
PABCO GYPSUM – Type PG-C or PG-9.
PANEL REY S A – Type PRX.
SIAM GYPSUM INDUSTRY (SARABURI) CO LTD – Type EX-1
STANDARD GYPSUM L L C – Types FRX-6, VPRX-6, FRWX-6, SHTX-6, FRX-6 Exterior Gypsum Board, SG-C.

TEMPLE-INLAND FOREST PRODUCTS CORP – Type X, Veneer Plaster Base – Type X, Water Retard – Type X, Sheathing – Type X, Soffit – Type X, TG-C.
UNITED STATES GYPSUM CO – Type AR, C, FRX-G, IP-AR, IP-X1, IP-X2, IPC-AR, SCX, SHX, WRC or WRX.
USG MEXICO S A DE C V – Type AR, C, IP-AR, IP-X1, IP-X2, IPC-AR, SCX, SHX, WRC or WRX.

- 4A. GYPSUM BOARD* – (As alternate to Item 4) – Nom 5/8 in. thick gypsum panels with beveled, square or tapered edges, applied vertically or horizontally. Vertical joints centered over studs and staggered one stud cavity on opposite sides of studs. Horizontal edge joints and horizontal butt joints on opposite sides of studs need not be staggered or backed. Panels attached to steel studs and floor runner with 1 in. long Type S steel screws spaced 8 in. OC when applied horizontally, or 8 in. OC along vertical and bottom edges and 12 in. OC in the field when panels are applied vertically.

CANADIAN GYPSUM COMPANY – Types AR, C, IP-AR, IP-X1, IP-X2, IPC-AR, SCX, SHX, WRC or WRX.
UNITED STATES GYPSUM CO – Type AR, C, FRX-G, IP-AR, IP-X1, IP-X2, IPC-AR, SCX, SHX, WRC or WRX.
USG MEXICO S A DE C V – Type AR, C, IP-AR, IP-X1, IP-X2, IPC-AR, SCX, SHX, WRC or WRX.
4B. GYPSUM BOARD* – (As an alternate to Items 4 or 4A) – Nom 3/4 in. thick, 4 ft wide, installed as described in Item 4A with screw length increased to 1-1/4 in.

CANADIAN GYPSUM COMPANY – Types AR, C, IP-AR, IP-X1, IP-X2, IPC-AR, SCX, SHX, WRC or WRX.
UNITED STATES GYPSUM CO – Types AR, C, IP-AR, IP-X1, IP-X2, IPC-AR, SCX, SHX, WRC or WRX.
USG MEXICO S A DE C V – Types AR, C, IP-AR, IP-X1, IP-X2, IPC-AR, SCX, SHX, WRC or WRX.

5. JOINT TAPE AND COMPOUND – Vinyl, dry or premixed joint compound, applied in two coats to joints and screw heads; paper tape, 2 in. wide, embedded in first layer of compound over all joints. As an alternate, nominal 3/32 in. thick gypsum veneer plaster may be applied to the entire surface of Classified veneer baseboard. Joints reinforced.

6. RESILIENT CHANNEL – (Optional-Not Shown) – 25 MSG galv steel resilient channels spaced vertically max 24 in. OC, flange portion attached to each intersecting stud with 1/2 in. long Type S-12 panhead steel screws.
- 6A. STEEL FRAMING MEMBERS (Not Shown)* – As an alternate to Item 3, furring channels and resilient insulation clip as described below:

- a. Furring Channels – Formed of No. 25 MSG galv steel, 2-3/8 in. wide by 7/8 in. deep, spaced 24 in. OC perpendicular to studs. Channels secured to studs as described in Item b. Ends of adjoining channels are overlapped 6 in. and tied together with double strand of No. 18 SWG galv steel wire near each end of overlap. As an alternate, ends of adjoining channels may be overlapped 6 in. and secured together with two self-tapping #6 framing screws, min. 7/16 in. long at the midpoint of the overlap, with one screw on each flange of the channel.

- b. Steel Framing Members* – Used to attach furring channels (Item a) to studs (Item 1). Clips spaced 48 in. OC, and secured to studs with 1-5/8 in. washer or hex head Type S steel screw through the center grommet. Furring channels are friction fitted into clips.

PAC INTERNATIONAL INC – Type RSC-1.
*Bearing the UL Classification Mark

Last Updated on 2005-09-27



DAMMON
ENGINEERING, INC.

EMMETT
DAMMON

ARCHITECT
ROBERT
WILTSE

1095 FLORIDA AVENUE
SLIDELL, LA. 70458
985-649-5832

WEBSITE:
WWW.DAMMONENGINEERING.COM
EMAIL:
DAMMONEN@BELLSouth.NET

ARCHITECTURE
ENGINEERING
STUDIES
PLANNING
INVESTIGATION
EXPERT WITNESS

NEW OFFICE
BUILDING

K.B. KAUFMANN
TERRACE AVENUE
SLIDELL, LA

FIREWALL
DETAILS

REV:

SCALE: AS NOTED

JOB#: 1871

DATE: 10-31-07

SHEET

A-5

OF