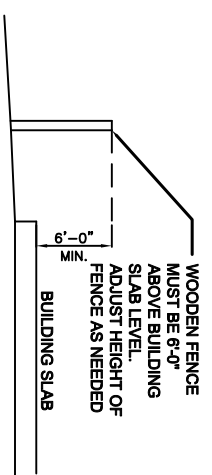
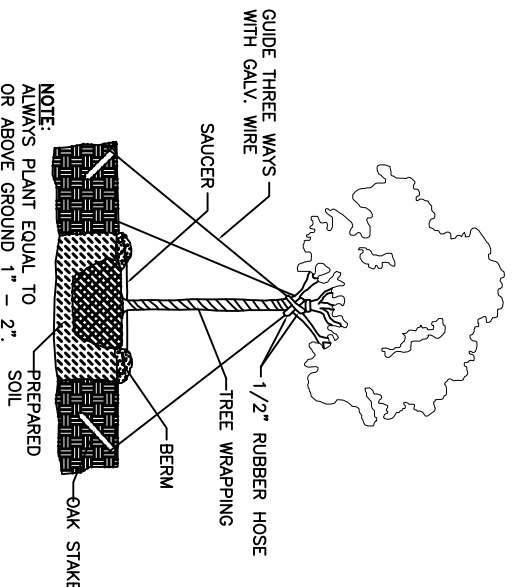


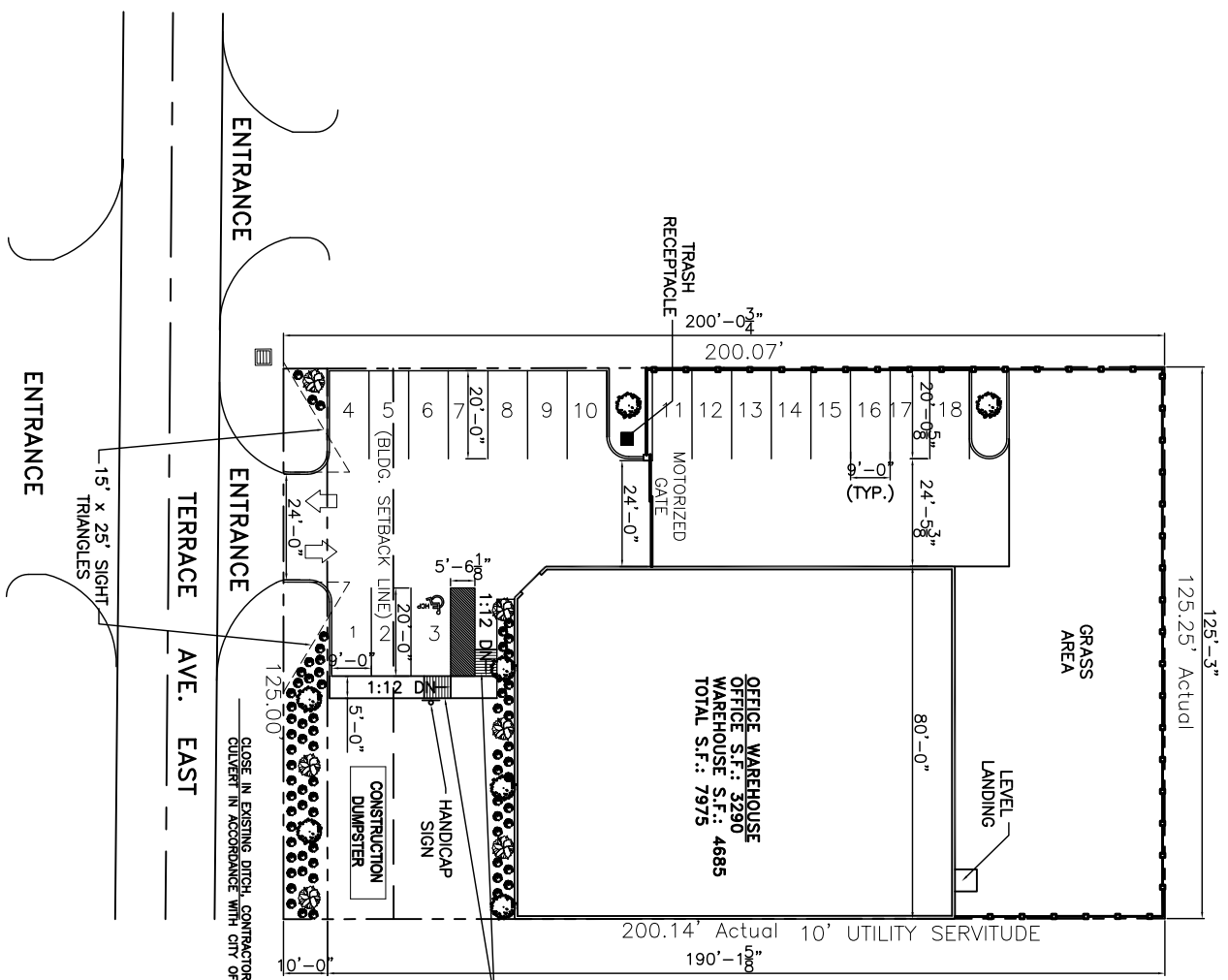
GROUND COVER DETAIL
N. T. S.



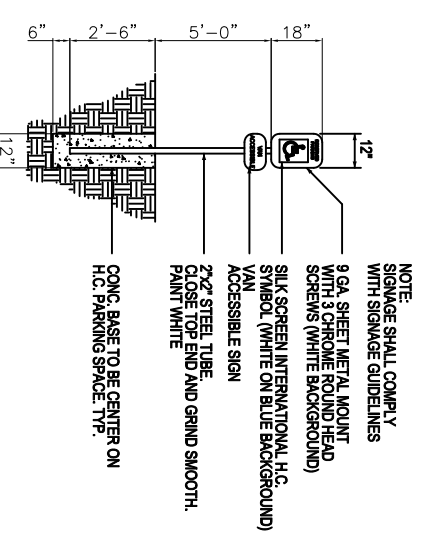
WOODEN FENCE DETAIL
N. T. S.



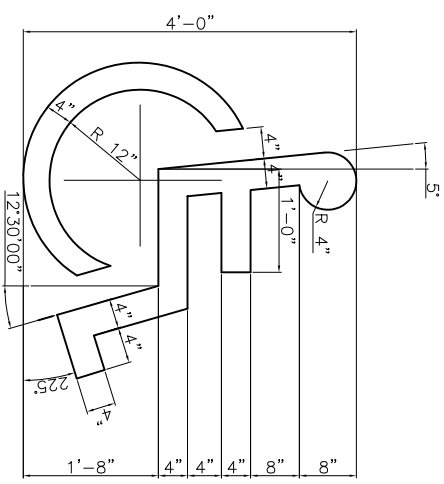
TYPICAL TREE PLANTING DETAIL
N. T. S.



SITE PLAN
SCALE: 1" = 20'-0"



HANDICAP PARKING SIGN
N. T. S.



HANDICAP SYMBOL DETAIL
N. T. S.

"DETECTABLE WARNING" ON RAMP CUT 1/2" DEEP GROOVES @ 2" TO 3" O.C. SCORED INTO CONCRETE AND PAINTED (TYP OF ALL RAMPS LEADING TO VEHICULAR AREAS (MAX SLOPE 1:12 (TYP OF 2)

LANDSCAPE LEGEND

- GRAPEVINE TREE MINIMUM OF 10' TO 12' HIGH CALIPER OF 2 1/2" MEASURED AT 2 FT. ABOVE THE GROUND REQUIRED EVERY 20' - 25' O.C.
- NUTTALL OAK TREE MINIMUM OF 8' TO 10' HIGH CALIPER OF 3" MEASURED AT 2 FT. ABOVE THE GROUND REQUIRED EVERY 20' O.C.
- LIVE OAK CALIPER OF 3" MEASURED AT 2 FT. ABOVE THE GROUND REQUIRED EVERY 20' O.C.
- DWARF CAMELLIA SHALL NOT EXCEED 4' IN HEIGHT AT MATURITY
- CYPRESS OR PINE TREE - MINIMUM OF 12' HIGH CALIPER OF 4" AT PEDESTRIAN WALKWAYS WHERE APPLICABLE

NOTES:
1. PROVIDE A MIN. LANDSCAPE AREA OF 5' WIDE ALONG BLDG. FOUNDATIONS, WHERE BLDG. FACES A PARKING LOT, STREET, DRIVEWAY, OR IS VISIBLE FROM A PUBLIC STREET.

REVISED: 12/18/07



DAMMON ENGINEERING, INC.
EMMETT DAMMON

ARCHITECT
ROBERT WILTSE

1095 FLORIDA AVENUE
SLIDELL, LA, 70458
985-649-5832

WEBSITE: WWW.DAMMONENGINEERING.COM
EMAIL: DAMMONENG@BELLSOUTH.NET

ARCHITECTURE
ENGINEERING
STUDIES
PLANNING
INVESTIGATION
EXPERT WITNESS

NEW OFFICE BUILDING

K.B. KAUFMANN
TERRACE AVENUE
SLIDELL, LA

SITE PLAN

REV: _____
SCALE: AS NOTED
JOB#: 1871
DATE: 10-31-07

C-2

OF