



DAMMON
ENGINEERING, INC.
EMMETT
DAMMON

ARCHITECT
ROBERT
WILTSE

1095 FLORIDA AVENUE
SLIDELL, LA. 70458
985-649-5832

WEBSITE:
WWW.DAMMONENGINEERING.COM
EMAIL:
DAMMONENG@BELLSOUTH.NET

ARCHITECTURE
ENGINEERING
STUDIES
PLANNING
INVESTIGATION
EXPERT WITNESS

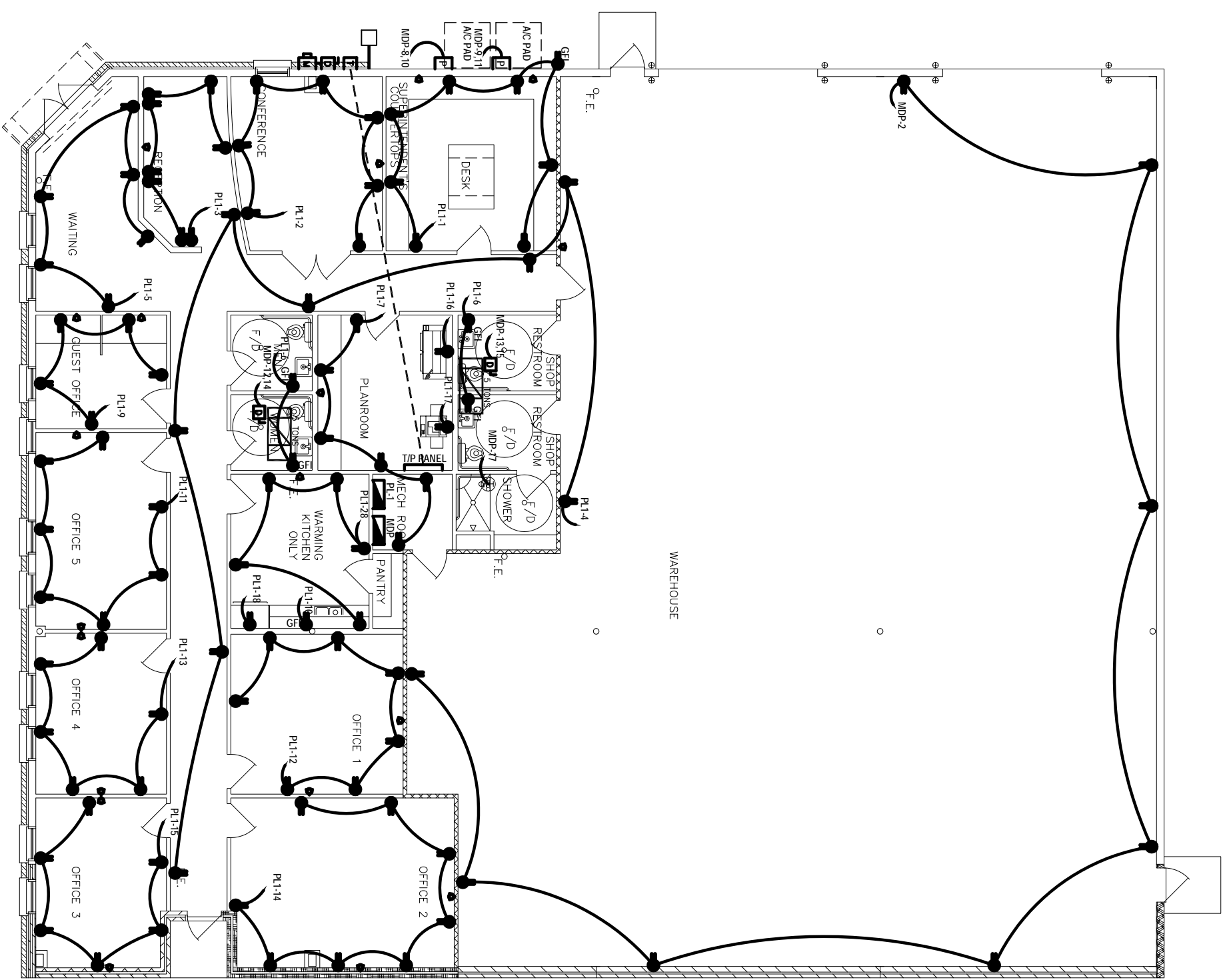
NEW OFFICE
BUILDING

K. B. KAUFMANN
TERRACE AVENUE
SLIDELL, LA

ELECTRICAL
POWER

REV:
SCALE: AS NOTED
JOB#: 1871
DATE: 10-31-07
SHEET

E-1
OF



POWER FIXTURE LEGEND			
PANEL		LETTER	
DATA PORT ENCLOSURE		DISCONNECT	
DUPLX OUTLET		DUPLX OUTLET G.F.I.	
PHONE / DATA JACK			

ELECTRICAL POWER
SCALE: 3/16"=1'-0"

