



DAMMON
ENGINEERING, INC.
EMMETT
DAMMON

ARCHITECT
ROBERT
WILTSE

1095 FLORIDA AVENUE
SLIDELL, LA, 70458
985-649-5832

WEBSITE:
WWW.DAMMONENGINEERING.COM
EMAIL:
DAMMONENG@BELLOUTH.NET

ARCHITECTURE
ENGINEERING
STUDIES
PLANNING
INVESTIGATION
EXPERT WITNESS

NEW OFFICE
BUILDING

K. B. KAUFMANN
TERRACE AVENUE
SLIDELL, LA

ELECTRICAL
LIGHTING

REV:

SCALE: AS NOTED

JOB#: 1871

DATE: 10-31-07

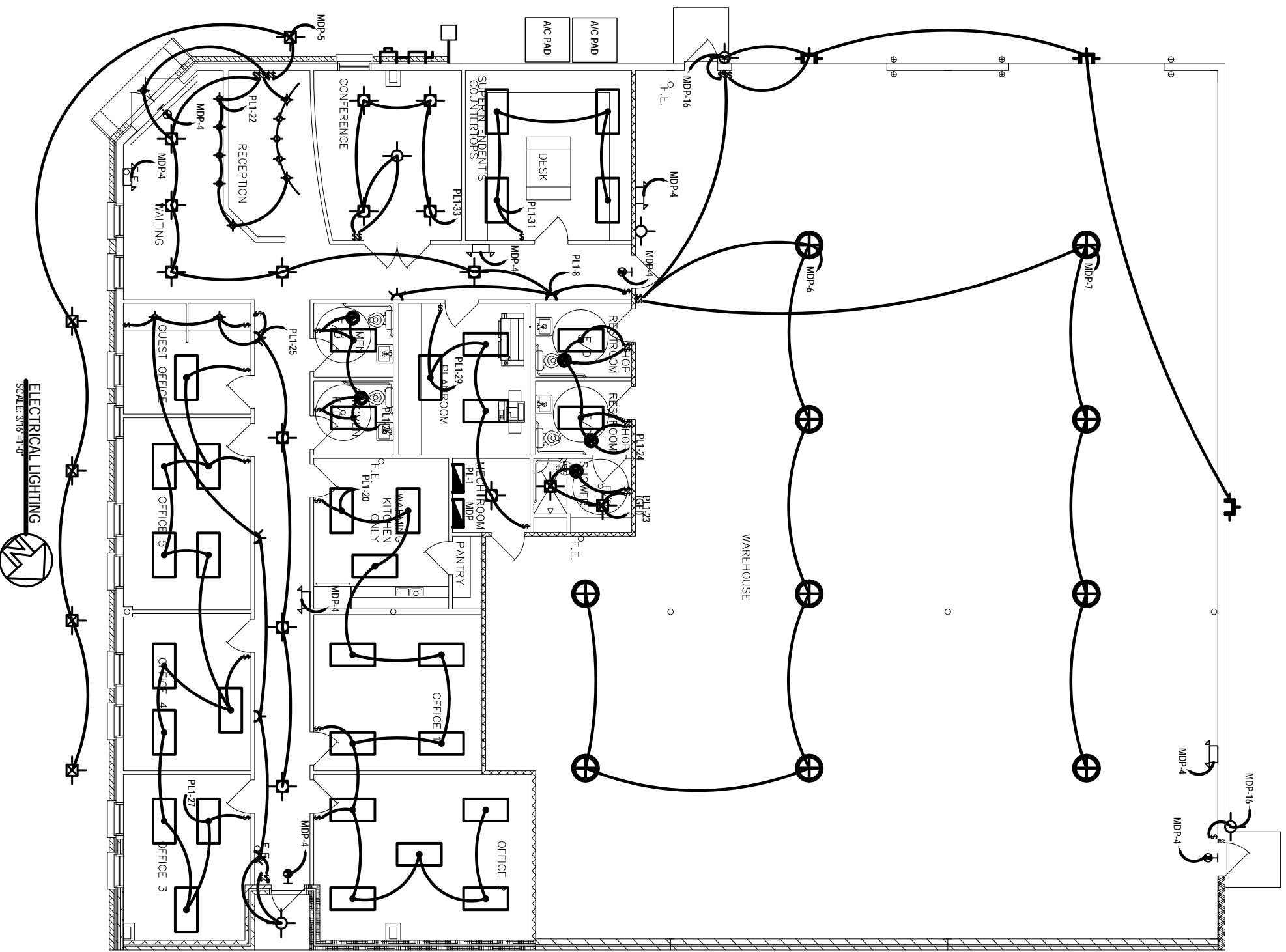
SHEET

E-2

OF

LIGHTING FIXTURE LEGEND		
PANEL		WALL PACK
HIGH BAY LIGHT		UP LIGHT
3 TUBE FLUORESCENT		RECESSED CDM
DECO WALL SCIENCE		GENERIC FIXTURE
FLEXIBLE TRACK LIGHT		PENDANT
EXIT LIGHT		EMERGENCY LIGHT
BATHROOM VENT		SINGLE HEAD LOW VOLTAGE EMERGENCY LIGHT
EMERGENCY LIGHT		GENERIC SCIENCE

ALL FIXTURES TO BE SELECTED BY OWNER.



ELECTRICAL LIGHTING

SCALE: 3/16\"/>

