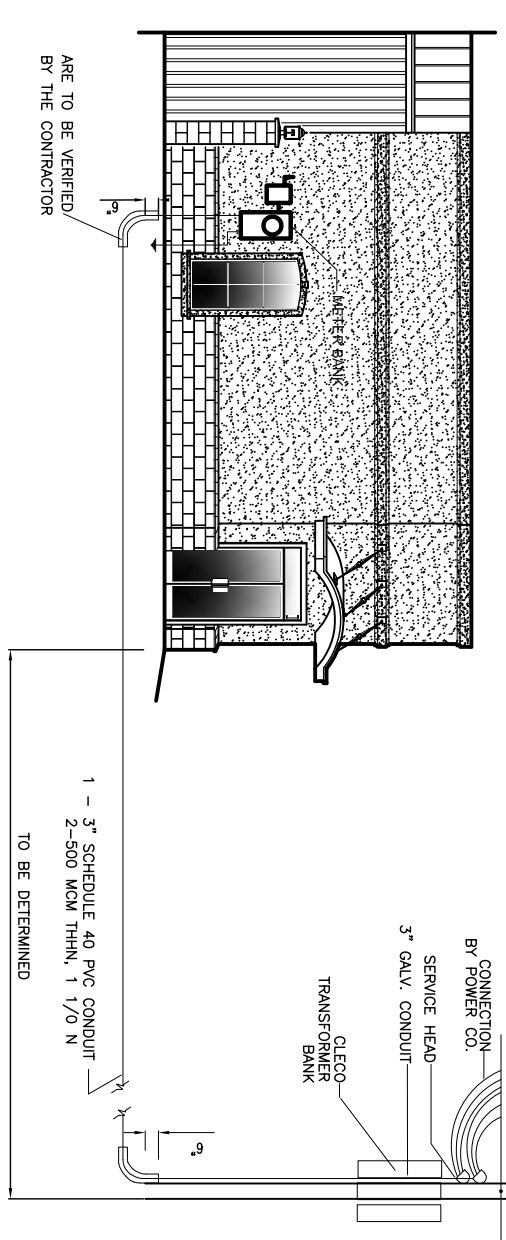
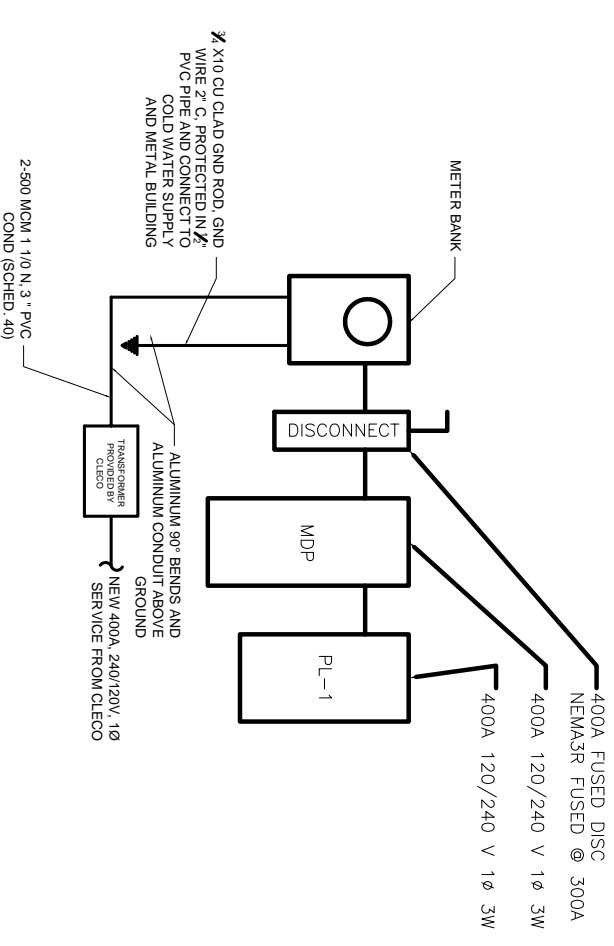


PANEL: MDP				PANEL: PL-1									
LOCATION: WAREHOUSE				LOCATION: WAREHOUSE									
FEEDER SOURCE: METER				FEEDER SOURCE: METER									
VOLTAGE: 120/240V, 400A MAIN LUG 1Ø, 3W				VOLTAGE: 120/240V, 225A MAIN LUG 1Ø, 3W									
ENCLOSURE: SURFACE MOUNTED W/ GROUND BUS KIT				ENCLOSURE: RECESSED W/ GROUND BUS KIT									
NO MAIN BRKR. MINIMUM S.C. CAPACITY - 10,000 A SYA				NO MAIN BRKR. MINIMUM S.C. CAPACITY - 10,000 A SYA									
CKT NO.	WIRE SIZE	LOAD DESCRIPTION	BREAKER AMP POLE	LOAD (VA)	THHN WIRE SIZE	CKT NO.	WIRE SIZE	LOAD DESCRIPTION	BREAKER AMP POLE	LOAD (VA)	THHN WIRE SIZE	CKT NO.	
1	2 35MCM	PANEL 2	200	17170	AØ	2	2	WAREHOUSE REC.	20	1440	#12	2	
3	2 35MCM	UP LIGHTING	20	16410	BØ	4	4	WAREHOUSE LIGHTS	20	1500	#12	4	
5	#12	WAREHOUSE LIGHTS	20	1600		6	6	WAREHOUSE LIGHTS	20	1500	#12	6	
7	#12	WAREHOUSE LIGHTS	20	800		8	8	WAREHOUSE LIGHTS	20	7000	#12	8	
9	#12	A/C 1 OUTSIDE	2	7000		10	10	A/C 2 OUTSIDE	2	7000	#12	10	
11	#12	A/C 1 INSIDE	2	7000		12	12	A/C 2 INSIDE	2	5000	#12	12	
13	#12	A/C 1 INSIDE	2	5000		14	14	EXTERIOR LIGHTS	20	5000	#12	14	
15	#12	A/C 1 INSIDE	2	5000		16	16	EXTERIOR LIGHTS	20	700	#12	16	
17	#12	WATER HEATER	40	2280		18	18				#12	18	
19	#12	WATER HEATER	40	2280		20	20				#12	20	
21						22	22				#12	22	
23						24	24				#12	24	
SOLID NEUTRAL / NEUTRAL WIRE (W)				AØ	47360	TOTAL CONNECTED LOAD (VA)				BØ	45660	GROUND BUS / GROUND WIRE (G)	

CKT NO.	WIRE SIZE	LOAD DESCRIPTION	BREAKER AMP POLE	LOAD (VA)	THHN WIRE SIZE	CKT NO.	WIRE SIZE	LOAD DESCRIPTION	BREAKER AMP POLE	LOAD (VA)	THHN WIRE SIZE	CKT NO.	
1	#12	SUPERINTENDENT RECEPT.	20	1440	AØ	2	2	CONF ROOM RECEPTACLES	20	1260	#12	2	
3	#12	RECEPTION RECEPTACLES	20	1440	BØ	4	4	HALLWAY / W/HSR RECEPT.	20	1440	#12	4	
5	#12	WAITING ROOM RECEPT.	20	1080		6	6	RESTROOM RECEPTACLES	20	720	#12	6	
7	#12	PLAN/MECH RM RECEPT	20	1080		8	8	HALLWAY LIGHTS	20	700	#12	8	
9	#12	GUEST OFFICE RECEPT	20	900		10	10	MICROWAVE RECEPTACLE	20	1600	#12	10	
11	#12	OFFICE 5 RECEPTACLES	20	1280		12	12	OFFICE 1 RECEPTACLES	20	1440	#12	12	
13	#12	OFFICE 4 RECEPTACLES	20	1080		14	14	OFFICE 2 RECEPTACLES	20	1600	#12	14	
15	#12	OFFICE 3 RECEPTACLES	20	1080		16	16	COPPER RECEPTACLES	20	1600	#12	16	
17	#12	PRINTER RECEPTACLES	20	1800		18	18	REFRIGERATOR RECEPT.	20	1600	#12	18	
19		SPARE	20	1		20	20	OFFICE 1.2 KITCHEN LIGHTS	20	1800	#12	20	
21		SPARE	20	1		22	22	REFRIGERATOR LIGHTS	20	1000	#12	22	
23	#12	SHOWER LIGHTS	20	600		24	24	SHOP RESTROOM LIGHTS	20	1000	#12	24	
25	#12	HALLWAY LIGHTS	20	1300		26	26	INSIDE RESTROOM LIGHTS	20	1000	#12	26	
27	#12	OFFICE 3 & 4 LIGHTS	20	1650		28	28	KITCHEN RECEPTACLES	20	900	#12	28	
29	#12	PLANROOM LIGHTS	20	550		30	30				#12	30	
31	#12	SUPERINTENDENT LIGHTS	20	600		32	32				#12	32	
33	#12	CONF. LIGHTS	20	600		34	34				#12	34	
35						36	36				#12	36	
37						38	38				#12	38	
39						40	40				#12	40	
41						42	42				#12	42	
SOLID NEUTRAL / NEUTRAL WIRE (W)				AØ	17170	TOTAL CONNECTED LOAD (VA)				BØ	16410	GROUND BUS / GROUND WIRE (G)	

**ELECTRICAL NOTES:**

1. ALL WORK SHALL CONFORM TO THE LATEST EDITION OF THE NATIONAL ELECTRICAL CODE, THE GOVERNING ELECTRICAL CODE, AND ALL OTHER INSPECTION DEPARTMENT HAVING JURISDICTION. OBTAIN CERTIFICATES OR APPROVAL WHERE REQUIRED.
2. ALL MATERIALS FURNISHED SHALL BE NEW AND SHALL BE U.L. LISTED.
3. THE DRAWINGS INDICATE SIZE AND GENERAL LOCATION OF WORK. SCALE DIMENSIONS SHALL NOT BE USED. THE EXACT LOCATION AND ELEVATION OF ALL LIGHTING FIXTURES, RECEPTACLES AND TELEPHONE OUTLETS, ETC. SHALL BE DETERMINED BY ACTUAL CONDITIONS IN THE FIELD, UNLESS NOTED OTHERWISE.
4. PRIOR TO BIDDING, CONTRACTOR SHALL VISIT THE JOB SITE AND FAMILIARIZE THEMSELVES WITH THE EXISTING CONDITIONS.
5. ELECTRICAL CONTRACTOR SHALL COORDINATE HIS WORK WITH OTHER TRADES AND WITH OTHER CONTRACTORS WHOSE WORK MAY AFFECT THIS INSTALLATION.
6. ELECTRICAL CONTRACTOR SHALL COORDINATE INCOMING ELECTRICAL SERVICE WITH UTILITY COMPANY AND INCLUDE IN HIS BID ALL CHARGES AND FEES INCURRED IN MODIFICATIONS.
7. WHERE MORE THAN ONE SWITCH OCCURS IN THE SAME LOCATION, THEY SHALL BE INSTALLED IN A GANG TYPE BOX UNDER ONE COVER PLATE.
8. ELECTRICAL CONTRACTOR SHALL COORDINATE THE TELEPHONE INSTALLATION WITH THE TELEPHONE COMPANY AND THE GENERAL CONTRACTOR.
9. ELECTRICAL CONTRACTOR, BEFORE INSTALLING ANY OF THE WORK, SHALL SEE THAT IT DOES NOT INTERFERE WITH CLEARANCES REQUIRED FOR FINISHED COLUMNS, HANGING CEILINGS, PLASTER, PARTITIONS, WALLS, ETC. AS SHOWN IN THE ARCHITECTURAL DRAWINGS AND DETAILS. IF ANY WORK IS INSTALLED AND IT LATER DEVELOPS THAT SUCH DETAILS OR DESIGN CANNOT BE FOLLOWED, THE CONTRACTOR, AT HIS OWN EXPENSE, SHALL MAKE SUCH CHANGES IN THE WORK AS DIRECTED BY THE ARCHITECT. AS WELL AS TO PERMIT THE INSTALLATION OF THE ARCHITECTURAL WORK AS SHOWN ON THE PLANS AND DETAILS.
10. PERFORM TEST REQUIRED BY THE OWNER OR THE ENGINEER IN CONNECTION WITH THE OPERATION OF THE ELECTRICAL SYSTEM IN THE BUILDING.
11. ALL TESTS SHALL BE MADE IN ACCORDANCE WITH THE LATEST STANDARD OF THE IEEE AND THE NATIONAL ELECTRICAL CODE.
12. MINIMUM CONDUCTOR SIZE SHALL BE #12, 600V INSULATION. MINIMUM SIZE CONDUIT SHALL BE 3/4" EMT FOR INTERIOR USE, AND 3/4" RIGID ALUMINUM FOR EXTERIOR USE. USE TYPE NMC CABLE COPPER FOR LIGHTS & RECEPTACLE CIRCUITS. EXTERIOR FITTINGS SHALL BE CAST BOXES AND COVERS. INTERIOR FITTINGS SHALL BE CAST WHERE EXPOSED ON WALLS. STAMPED BOXES MAY BE USED ABOVE CEILINGS IN AIR CONDITIONED SPACES.
13. CONTRACTOR SHALL INSTALL WIRING AND OTHER CIRCUIT COMPONENTS TO MATCH EQUIPMENT ACTUALLY INSTALLED.
14. INSTALL GROUND FAULT RECEPTACLES AT RECEPTACLE LOCATIONS WITHIN 5' OF SINKS OR LAVATORIES, AND AT EXTERIOR LOCATIONS. EXTERIOR RECEPTACLES SHALL ALSO BE WEATHERPROOF.
15. BONDING AND GROUNDING SHALL BE IN ACCORDANCE WITH NFPA 70:230-63, NFPA 250-23, 250-71, & 250-72.
16. GROUND NEUTRAL IN ACCORDANCE WITH NFPA 70:250-23b.
17. FUSES SHALL BE 1TT CLASS K5, 250 VOLT, 200,000 AMP INTERRUPTING CAP.
18. PROVIDE SERVICES OF A FIRE/SMOKE DETECTION & ALARM COMPANY TO DESIGN & INSTALL ALARM SYSTEM TO MEET REQUIREMENTS OF THE STATE FIRE MARSHAL.
19. ALL ELECTRICAL, MECHANICAL & PLUMBING PENETRATING FIRE PARTITIONS SHALL BE FIRE CAULKED. (PENETRATIONS THROUGH RATED CONSTRUCTION SHALL BE SEALED WITH A MATERIAL CAPABLE OF PREVENTING THE PASSAGE OF FLAMES AND HOT GASES WHEN TESTED IN ACCORDANCE WITH ASTM-E814)
20. EXTERIOR LIGHTING SHALL BE SHADDED OR INWARDLY DIRECTED IN SUCH A MANNER SO THAT NO DIRECT LIGHTING OR GLARE IS CAST BEYOND THE PROPERTY LINE. THE INTENSITY OF SUCH LIGHTING SHALL NOT EXCEED ONE FOOT CANDLE AS MEASURED AT THE ABUTTING PROPERTY LINE.



**ELECTRICAL LOAD SUMMARY**

LOAD SOURCE	1Ø-KVA	3Ø-KVA	OR	1Ø-KW	3Ø-KW
BUILDING LIGHTING	16.5				
ELECTRIC WATER HEATING	4.5				
HEAT PUMP					
SUPPLEMENTAL HEAT SYSTEM					
AIR CONDITIONING	28				
ELECTRIC HEATING (CIRCLE PRIMARY/SECONDARY)	20				
COOKING					
REFRIGERATION	1.6				
RECEPTACLES (STANDARD)					
RECEPTACLES (COMPUTER)	21.88				
TOTAL MOTORS (EXCLUDE HVAC)					
PARKING LOT / EXTERIOR LIGHTING					
MISCELLANEOUS					
OTHER (SPECIFY)					
				7	

**ELECTRICAL SCHEDULE AND NOTES**

**DAMMON ENGINEERING, INC.**  
**EMMETT DAMMON**  
**ARCHITECT ROBERT WILTSE**

1095 FLORIDA AVENUE  
 SLIDELL, LA, 70458  
 985-649-5832

WEBSITE: WWW.DAMMONENGINEERING.COM  
 EMAIL: DAMMONENG@BELLSOUTH.NET

**ARCHITECTURE**  
**ENGINEERING**  
**STUDIES**  
**PLANNING**  
**INVESTIGATION**  
**EXPERT WITNESS**

**NEW OFFICE BUILDING**

K.B. KAUFMANN  
 TERRACE AVENUE  
 SLIDELL, LA

**ELECTRICAL SCHEDULES**

REV: \_\_\_\_\_

SCALE: AS NOTED

JOB#: 1871

DATE: 10-31-07

SHEET

E-3