

Engberg Anderson Design Partnership, Inc.  
MILWAUKEE • MADISON

## ARCHITECTURAL SYMBOLS

### MATERIAL DESIGNATIONS

	EARTH		ROUGH WOOD FRAMING
	MULCH		ROUGH WOOD BLOCKING
	POROUS FILL		RIGID INSULATION
	ROCK		PLYWOOD
	CONCRETE		FINISHED WOOD
	CMU		BATT INSULATION
	BRICK		PLASTER, SAND, ETC.
	STONE		CERAMIC TILE
	METAL		ACT

### ARCHITECTURAL SYMBOLS

	BUILDING ELEVATION		CEILING TYPE
	WALL SECTION		CEILING ELEVATION
	BUILDING SECTION		DOOR SYMBOL
	DETAIL REFERENCE		ELEVATION INDICATOR
	INTERIOR ELEVATION		NEW COLUMN LINE
	KEY NOTE		EXISTING COLUMN LINE
	WALL TYPE	<b>WALL SYMBOLS</b>	
	WINDOW OR BORROWED LIGHT		EXISTING WALL
	REVISION BUBBLE		WALL TO BE REMOVED
	ROOM NAME AND NUMBER		NEW METAL STUD WALL
			NEW CMU WALL
			NEW WOOD WALL
			NEW CONCRETE WALL
		<b>DOOR SYMBOLS</b>	
			EXISTING DOOR
			EXISTING DOOR TO BE REMOVED
			NEW DOOR
			NEW OVERHEAD CEILING DOOR

SEE DRAWINGS OF RESPECTIVE DISCIPLINES FOR ADDITIONAL SYMBOLS

## GENERAL ARCH ABBREVIATIONS

### SYMBOLS

⊙	At	FIN	Finish(ed)
#	Number	FLR	Floor
∠	Angle	FND	Foundation
∅	Diameter	FO	Finished Opening
⊕	Centerline	FT	Foot, Feet
⊖	Plate	FTG	Footing
		FUT	Future
<b>A</b>	Air Conditioning	<b>G</b>	Gas
ACT	Acoustical Ceiling Tile	GA	Gauge
ADJ	Adjacent	GAL	Gallon
AFF	Above Finish Floor	GALV	Galvanized
ALUM	Aluminum	GB	Grab Bar
ALT	Alternate	GC	General Contractor
ANOD	Anodized	GLULAM	Glue-Laminated
APPROX	Approximate	GND	Ground
ASPH	Asphalt	GS	Galvanized Steel
AVG	Average	GWB	Gypsum Wall Board
		GYP	Gypsum
<b>B</b>	Bottom of .....(steel, concrete, etc.)	<b>H</b>	Hose Bibb
B/.....	Bottom of .....(steel, concrete, etc.)	HB	Handicapped
BD	Board	HCPDR	Handicapped
BITUM	Bituminous	HDWR	Hardware
BLDG	Building	HM	Hollow Metal
BRG	Bearing	HORIZ	Horizontal
BSMT	Basement	HORIZ	Heating, Ventilating & Air Conditioning
BTM	Bottom	HW	Hot Water
BUR	Built Up Roofing	<b>I</b>	Inside Diameter
		ID	Incandescent
CAB	Cabinet	INCL	Include(d) (ing) (tion)
CB	Catch Basin	INSUL	Insulate(d) (ing) (tion)
CG	Corner Guard	INT	Interior
CJ	Control Joint	<b>J</b>	Janitor
CLG	Ceiling	JAN	Joint
CMU	Concrete Masonry Unit	JT	Joint
CM	Construction Manager	<b>K</b>	Kitchen
CO	Clean Out	KIT	Kitchen
COL	Column	<b>L</b>	Laboratory
CONC	Concrete	LAB	Laminated(d)
CONST	Construct(ion)	LAV	Lavatory
CONTR	Contractor	LBS	Pounds
CORR	Corridor	LL	Live Load
CPT	Carpet(ed)	LVR	Louver
CRS	Course(s)	<b>M</b>	Masonry
CT	Ceramic Tile	MAS	Material(s)
CUH	Cabinet Unit Heater	MATL	Material(s)
		MAX	Maximum
<b>D</b>	Penny (nail size)	MDO	Medium Density Overlay
DBL	Double	MECH	Mechanical
DEG	Degree	MFR	Manufacturer
DEMO	Demolish/Demolition	MH	Manhole
DEPT	Department	MIN	Minimum
DIAM	Diameter	MISC	Miscellaneous
DIAG	Diagonal	MO	Masonry Opening
DIM	Dimension	MTL	Metal
DL	Dead Load	MULL	Mullion
DN	Down	<b>N</b>	Not in Contract
DT	Drain Tile	NO	Number
DWG	Drawing	NOM	Nominal
		NRC	Noise Reduction Coefficient
<b>E</b>	Each	NTS	Not To Scale
EDF	Electric Drinking Fountain	<b>O</b>	On Center
EIFS	Ext. Insul. & Finish System	OC	Outside Diameter
EJ	Expansion Joint	OD	Office
ELEV	Elevation	OFF	Office
ELEC	Electric(al)	OPNG	Opening
ELEV	Elevator	OPP	Opposite
EMER	Emergency	OPT	Option(al)
ENCL	Enclosure(ure)	OZ	Ounce
EP	Electrical Panel	<b>P</b>	Particle Board
EQ	Equal	PBD	Particle Board
EPH	Electric Wall Heater	PC	Precast Concrete
EXIST	Existing	PE	Pedestal
EXT	Exterior	PER	Perforated
<b>F</b>	Fire Alarm	PERIM	Perimeter
FA	Fabricate		
FAB	Fabricate		
FD	Floor Drain		
FE	Fire Extinguisher		
FEC	Flre Extinguisher Cab. w/ Extinguisher		
FHC	Fire Hose Cabinet		

NOT ALL SYMBOLS AND ABBREVIATIONS SHOWN ON THIS SHEET ARE USED IN THE DRAWINGS.

## BUILDING CLASSIFICATIONS

### APPLICABLE CODES

BUILDING CODE	IBC ED. 2003
ELECTRICAL CODE	NEC ED. 2005
ACCESSIBILITY CODE	ANSI A117-1998
MECHANICAL CODE	IMC ED. 2003
ENERGY CODE	INTERNATIONAL FUEL GAS CODE- ED. 2003
ELEVATOR CODE	N/A
ZONING CODE	N/A

### BUILDING DATA

OCCUPANCY CLASSIFICATION	IBC CHAPTER 3, TYPE "B"-BUSINESS GROUP
CONSTRUCTION TYPE	I-B
SPRINKLERED	SPRINKLERED
SEISMIC ZONE	N/A
NUMBER OF STORIES	5
SQUARE FT PER FLOOR	32,300 S.F.
BUILDING TOTAL SIZE	N/A
BUILDING TOTAL VOLUME	N/A

### MEANS OF EGRESS

OCCUPANT LOAD	FIRST FLOOR	PER IBC 1004.1.2 = 34 OCCUPANTS
TOTAL STAIR WIDTH REQ'D	N/A	
TOTAL STAIR WIDTH PROVIDED	N/A	
CORRIDOR WIDTH REQ'D	EGRESS WIDTH: (SEE IBC 1005.1) = 5.1"	
EXIT DOOR WIDTH REQ'D	5.1"	
EXIT DOOR WIDTH PROVIDED	72"	

### TENANT INFORMATION

TENANT NAME	LAKESIDE DENTAL CARE
FLOOR	TWO
TENANT SUITE NUMBER	210

## AMERICAN DENTAL PARTNERS- METAIRIE

2400 VETERANS BOULEVARD SUITE 210  
KENNER, LOUISIANA

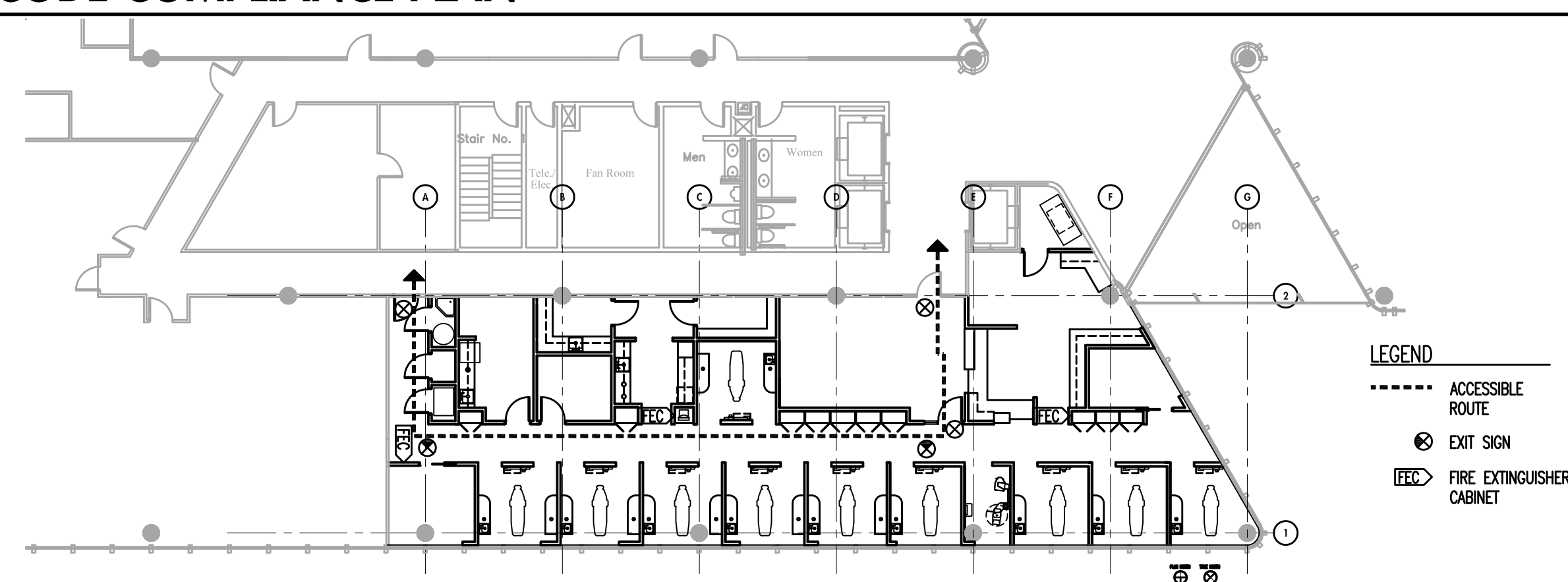
**Owner**  
American Dental Partners, Inc.  
3000 W. Esplanade Ave. Suite 200  
Metairie, LA 70002

**Project No** 071750

### Issued For:

No.	Description	Date
01	ISSUED FOR BID	10-17-07

## CODE COMPLIANCE PLAN



## GENERAL NOTES

- FIRE PROTECTION SYSTEM TO BE DESIGN-BUILD IN COMPLIANCE WITH ALL APPLICABLE STATE & LOCAL CODES. CONTRACTOR IS RESPONSIBLE FOR PRODUCING AND SUBMITTING PLANS FOR REVIEW AND APPROVAL.
- PLUMBING SYSTEM TO BE DESIGN-BUILD IN COMPLIANCE WITH ALL APPLICABLE STATE & LOCAL CODES. CONTRACTOR IS RESPONSIBLE FOR PRODUCING AND SUBMITTING PLANS FOR REVIEW AND APPROVAL.
- ELECTRICAL SYSTEM TO BE DESIGN-BUILD IN COMPLIANCE WITH ALL APPLICABLE STATE & LOCAL CODES. CONTRACTOR IS RESPONSIBLE FOR PRODUCING AND SUBMITTING PLANS FOR REVIEW AND APPROVAL.
- MECHANICAL SYSTEM TO BE DESIGN-BUILD IN COMPLIANCE WITH ALL APPLICABLE STATE & LOCAL CODES. CONTRACTOR IS RESPONSIBLE FOR PRODUCING AND SUBMITTING PLANS FOR REVIEW AND APPROVAL.

**Drawn by** RAF  
**Checked by** TAS  
**File** 1750 A0-1.dwg

## General Information & Code Compliance Plan

# A0.1