

Engberg Anderson Design Partnership, Inc.
MILWAUKEE • MADISON

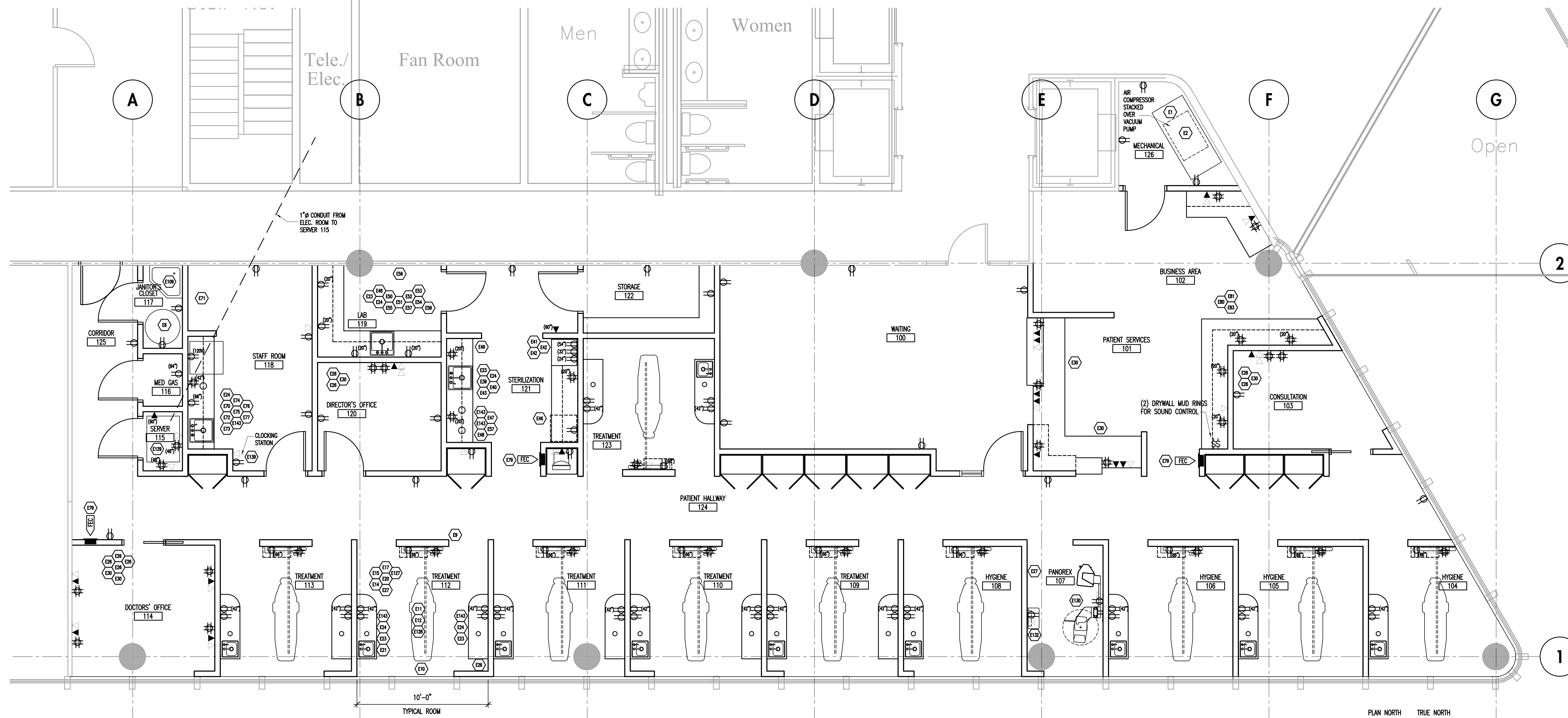
AMERICAN DENTAL PARTNERS- METAIRIE

2400 VETERANS BOULEVARD SUITE 210
KENNER, LOUISIANA

Owner
American Dental Partners, Inc.
3000 W. Esplanade Ave. Suite 200
Metairie, LA 70002

Project No 071750

Issued For:		
No.	Description	Date
01	ISSUED FOR BID	10-17-07



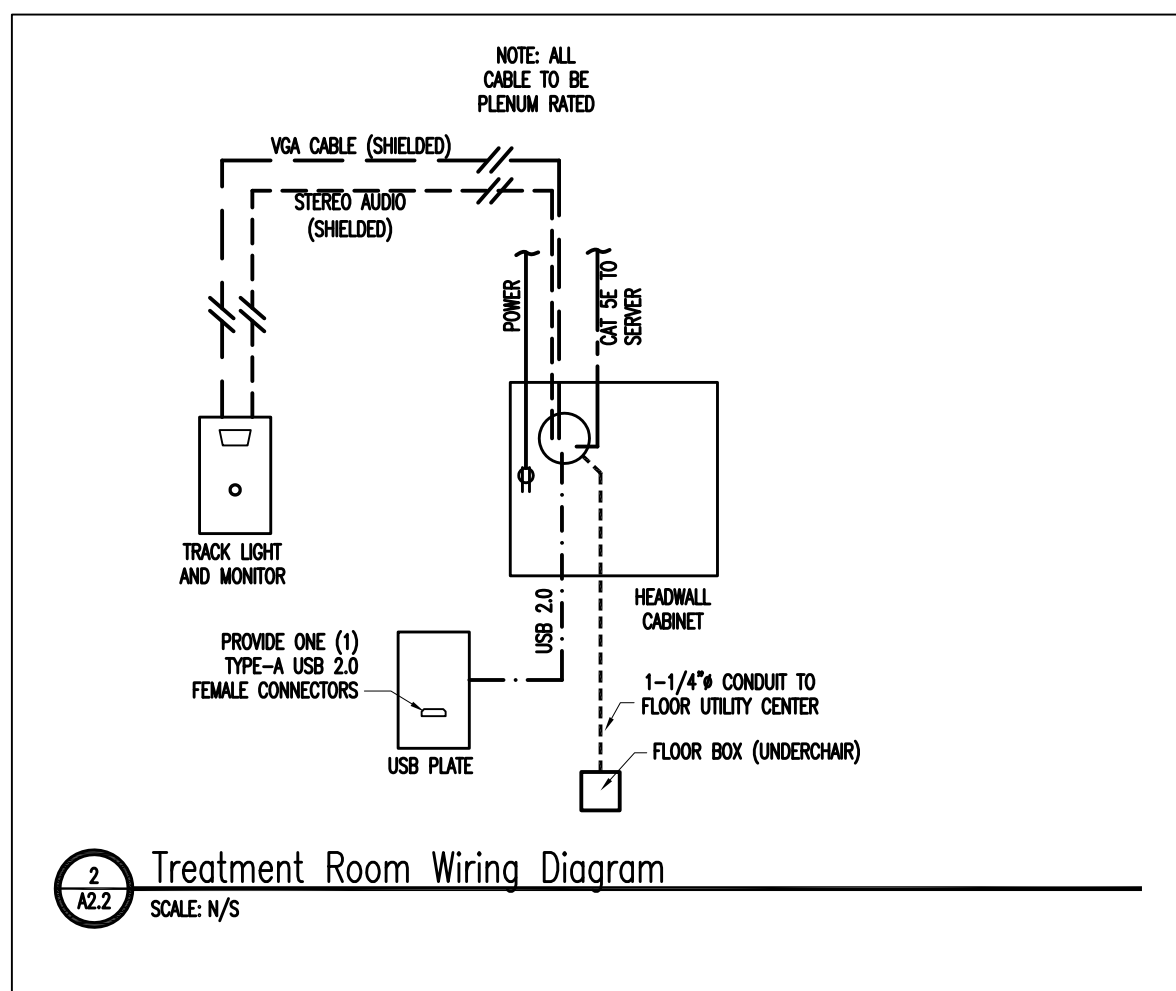
1 Equipment Plan
SCALE: 1/4"=1'-0"

GENERAL EQUIPMENT NOTES

- THE CONTRACTOR IS TO COORDINATE WITH THE DENTAL EQUIPMENT SUPPLIER THE REQUIREMENTS FOR ALL MECHANICAL, ELECTRICAL, AND PLUMBING CONNECTIONS, BLOCKING FOR MOUNTING AND ALL OTHER REQUIREMENTS FOR THE INSTALLATION OF DENTAL EQUIPMENT.
- CONTACT JOHN TESSITORE (CELL): (504) 616-4729 AT PATTERSON DENTAL COMPANY FOR INFORMATION PERTAINING TO SPECIFIC DENTAL EQUIPMENT.
- SEE INTERIOR ELEVATIONS FOR MOUNTING HEIGHTS OF OUTLETS AND RELATIONSHIP W/ OTHER EQUIPMENT.
- SEE SHEET A0.2 FOR DENTAL EQUIPMENT SCHEDULE.
- ELECTRICAL OUTLETS SHOWN ARE THOSE AT SPECIAL LOCATIONS ONLY. ELECTRICAL CONTRACTOR IS RESPONSIBLE FOR PROVIDING ALL OUTLETS AS REQUIRED BY CODE.
- ALL VIDEO (VGA) AND AUDIO CABLE TO BE SHIELDED, PLENUM RATED TYPE.
- SEE ROOM 112 FOR TYPICAL TREATMENT AND HYGIENE ROOM EQUIPMENT.
- PROVIDE (2) 1/4" TAPS UNDER SINK FOR ICE AND COFFEE MAKERS IN STAFF ROOM 118

KEY

- DUPLEX OUTLET (TYPICAL 120V)
- DEDICATED 20 AMP CIRCUIT
- QUADRIPLEX OUTLET
- DUPLEX OUTLET 220V
- TELEPHONE RECEPTACLE
- DATA RECEPTACLE
- RECESSED FLOOR OUTLET
- EQUIPMENT



2 Treatment Room Wiring Diagram
SCALE: N/S

Drawn by RAF
Checked by TAS
File 1750 A2-2.dwg

Equipment Plan