

**DAMMON**  
ENGINEERING, INC.

CHIEF ENGINEER  
EMMETT  
DAMMON, P.E.  
CHIEF ARCHITECT  
ROBERT  
WILTSE

1095 FLORIDA AVENUE  
SUDELL, LA. 70458  
OFFICE: 985-649-3832  
FAX: 985-641-5950

WEBSITE: [WWW.DAMMONENGINEERING.COM](http://WWW.DAMMONENGINEERING.COM)  
EMAIL: [DAMMONENG@BELLSOUTH.NET](mailto:DAMMONENG@BELLSOUTH.NET)

ARCHITECTURE  
ENGINEERING  
STUDIES  
PLANNING  
INVESTIGATION  
EXPERT WITNESS

NEW OFFICE/  
WAREHOUSE  
BUILDINGS

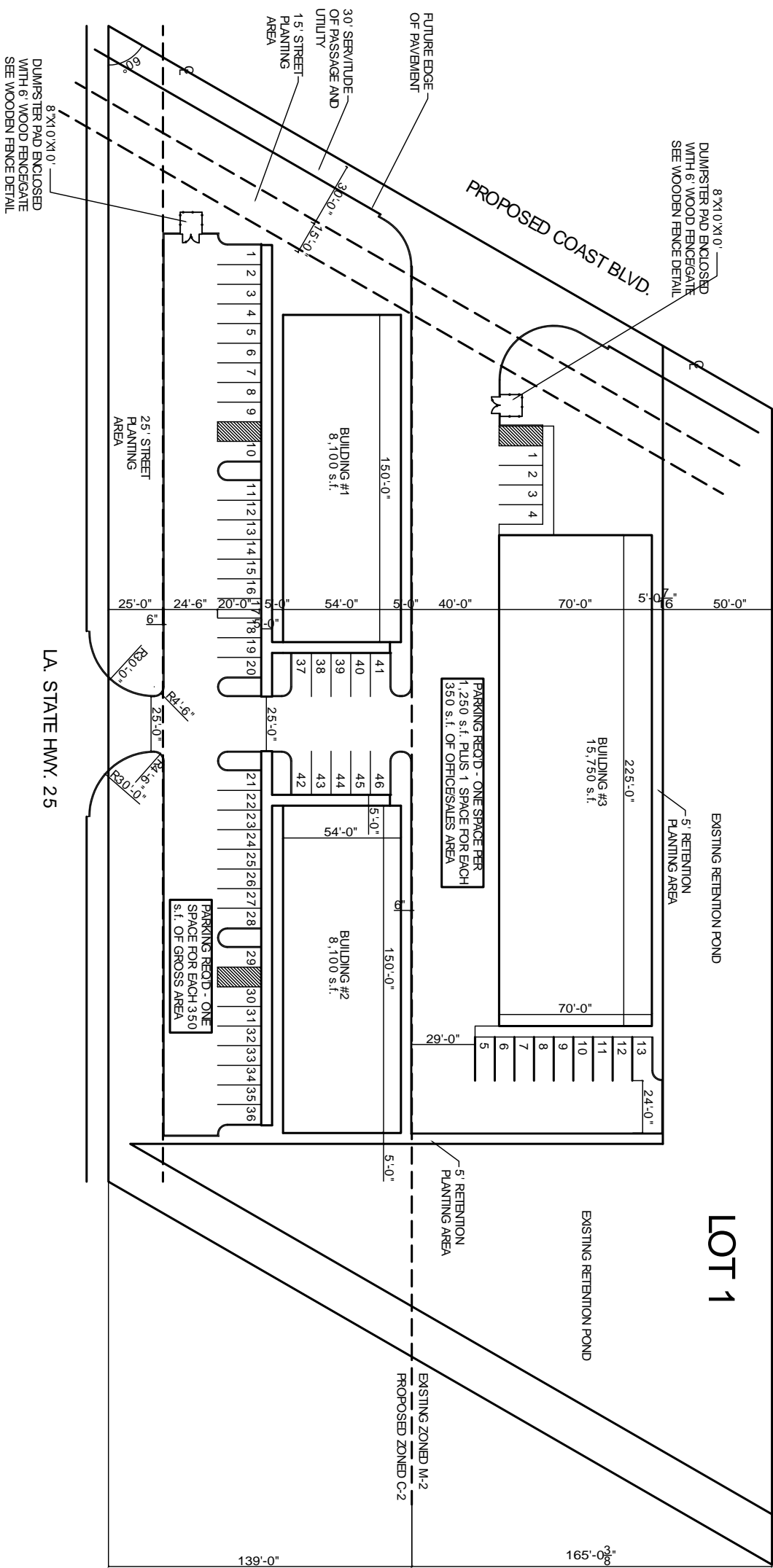
SOUTHEAST  
INVESTMENTS, LLC.  
LA. HWY. 25  
LOT 1

PROPOSED  
SITE PLAN

REV:  
SCALE: AS NOTED  
JOB#: 1925  
DATE: 1-23-08  
SHEET

OF

C-1



PROPOSED SITE PLAN  
SCALE 1"=30'-0"

