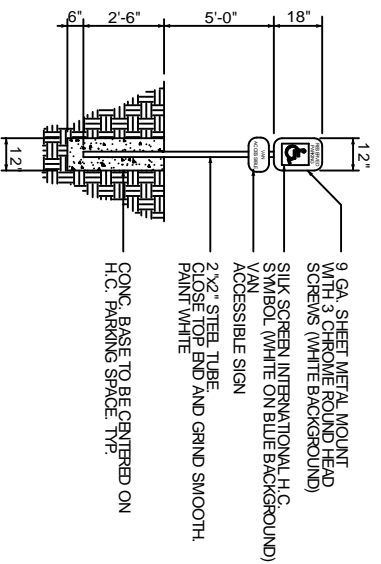


**HANDICAP SYMBOL DETAIL**  
SCALE: N.T.S.

NOTE: SIGNAGE SHALL COMPLY WITH SIGNAGE GUIDELINES



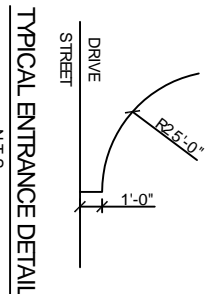
**HANDICAP PARKING SIGN**  
SCALE: N.T.S.

HCP RAMP NOTE  
PROVIDE "DETECTABLE WARNING" ON RAMP. CUT 1/2" DEEP GROOVES @ 2-3" O.C. SCORED INTO CONCRETE AND PAINTED. TYPICAL @ ALL RAMPS LEADING INTO VEHICULAR AREAS. (MAX SLOPE 1:12)

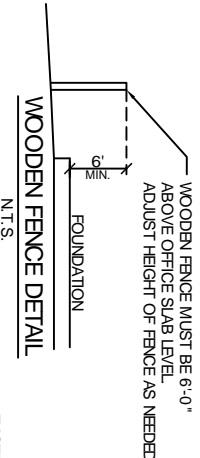
**PARKING REQUIREMENTS**  
3,000 s.f. TOTAL BLDG. AREA  
REQUIRES: MIN. 5 SPACES + 2 FOR EVERY 3 EMPLOYEES  
TOTAL PARKING REQUIRED = 9 SPACES (1 HCP)  
TOTAL PARKING PROVIDED = 9 SPACES (1 HCP)

**SITE LIGHTING**  
EXTERIOR LIGHTING SHALL BE SHADED OR INWARDLY DIRECTED IN SUCH A MANNER SO THAT NO DIRECT LIGHTING OR GLARE BE CAST BEYOND THE PROPERTY LINE. THE INTENSITY OF SUCH LIGHTING SHALL NOT EXCEED ONE FOOT CANDLE AS MEASURED AT THE ADJUTING PROPERTY LINE. (N/A)

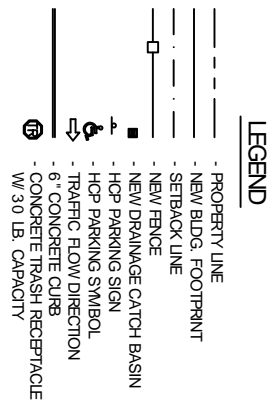
**SITE PLAN NOTES**  
1. ROOFING MATERIAL: METAL SSR  
2. SIDING MATERIAL: VINYL SIDING  
3. UTILITIES: ALL UTILITIES SHALL BE PLACED UNDERGROUND.



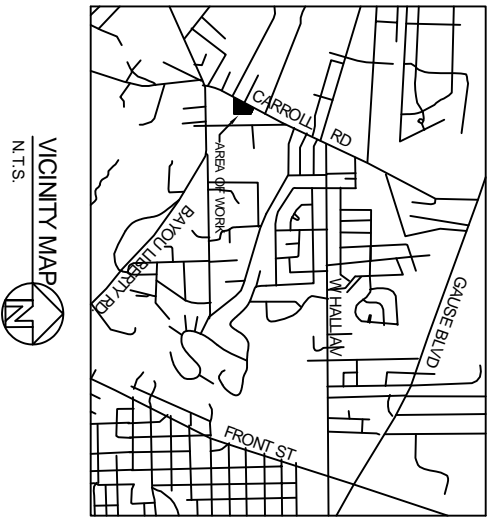
**TYPICAL ENTRANCE DETAIL**  
N.T.S.



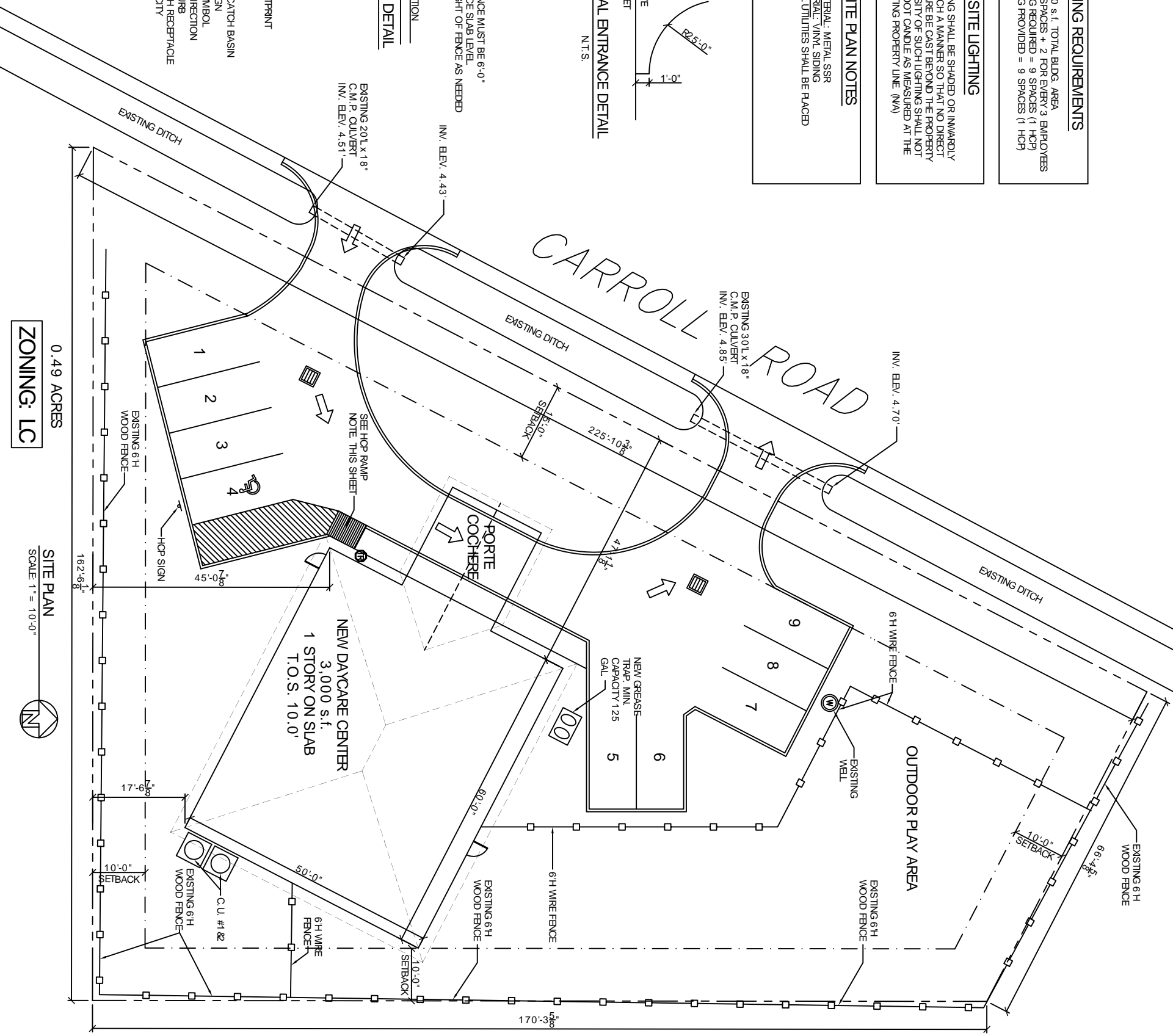
**WOODEN FENCE DETAIL**  
N.T.S.



**LEGEND**

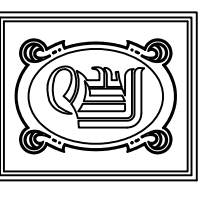


**VICINITY MAP**  
N.T.S.



0.49 ACRES  
**ZONING: LC**

**SITE PLAN**  
SCALE: 1" = 10'-0"



**DAMMON ENGINEERING, INC.**  
CHIEF ENGINEER  
EMMETT DAMMON, P.E.  
CHIEF ARCHITECT  
ROBERT WILTSE

1095 FLORIDA AVENUE  
SIDELL, LA, 70458  
OFFICE 985-649-5832  
FAX 985-641-5950  
WWW.DAMMONENGINEERING.COM  
EMAIL: DAMMONENG@BELLSOUTH.NET

ARCHITECTURE  
ENGINEERING  
STUDIES  
PLANNING  
INVESTIGATION  
EXPERT WITNESS

**PRECIOUS JEWELS DAY CARE CENTER**

FRIEDA TORREGANO  
58074 CARROLL RD.  
SIDELL, LA 70460

**SITE PLAN**

REV:	
SCALE:	AS NOTED
JOB#:	1991
DATE:	XX-XX-08
SHEET:	

**C-1**

OF