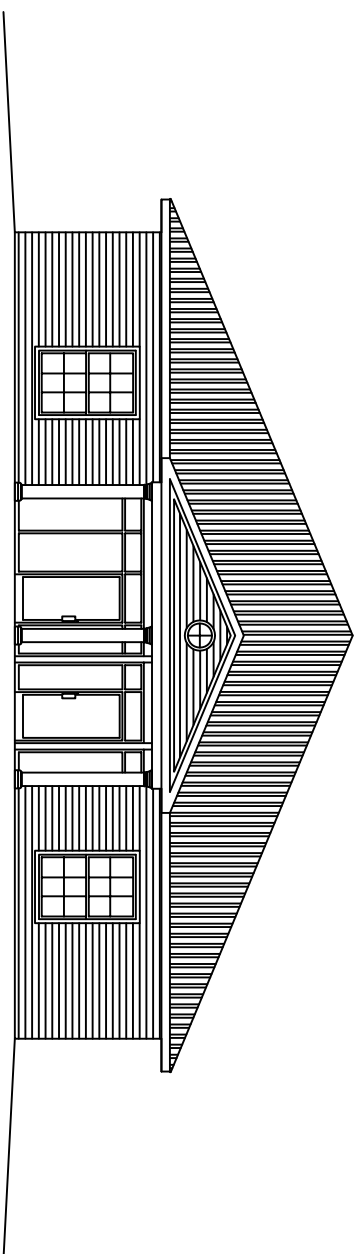


# PRECIOUS JEWELS DAYCARE CENTER

## 58074 CARROLL RD. SLIDELL, LA 70460



### INTERNATIONAL BUILDING CODE 2006 REQUIREMENTS

OCCUPANCY CLASSIFICATION:  
DAYCARE, GROUP E (SEC 305.2)

OCCUPANT LOAD: (TBL 1004.1.1)  
DAYCARE = 35 NET S.F./OCCUPANT  
1,360 S.F. = 39 OCCUPANTS  
140 S.F. KITCHEN = 2 OCCUPANTS  
GROUP B = 100 GROSS S.F./OCCUPANT  
485 S.F. = 5 OCCUPANTS  
TOTAL OCCUPANT LOAD = 46

EXIT ACCESS REQUIREMENTS: (SEC 1015.1016)  
EXIT REQUIRED FOR LESS THAN 10 OCCUPANTS IN DAYCARE OCCUPANCY (TBL 1015.1) (4 EXITS PROVIDED)  
EXIT ACCESS TRAVEL DISTANCE = MAX 200' UNSPRINKLED  
EXIT ACCESS TRAVEL DISTANCE = MAX 250' SPRINKLED

ALLOWABLE HEIGHT AND BLDG. AREA: (TBL 503)  
EDUCATIONAL = 9,500 S.F./7 STORY ALLOWED. THIS PROJECT 1 STORY 3,000 S.F.

CONSTRUCTION CLASSIFICATION: (SEC 602.5)  
TYPE VB

FIRE RESISTANCE RATING REQUIREMENTS FOR BLDG. ELEMENTS: (TBL 601)  
STRUCTURAL FRAMES= 0 HRS.  
BEARING WALLS (INTERIOR AND EXTERIOR)= 0 HRS.  
NON-BEARING WALLS= 0 HRS.  
FLOOR CONSTRUCTION= 0 HRS.  
ROOF CONSTRUCTION= 0 HRS.

FIRE RESISTANCE RATING REQUIREMENTS FOR EXTERIOR WALLS: (TBL 602)  
30' ≤ X = 0 HR

FIRE ALARM SYSTEM REQUIREMENTS: (SEC 907)  
THIS BLDG. DOES NOT REQUIRE A FIRE ALARM SYSTEM IN ACCORDANCE WITH SECTION 907.2.3. EXCEPTION #1

FIRE PROTECTION SYSTEM REQUIREMENTS: (SEC 903)  
THIS BLDG. DOES NOT REQUIRE A FIRE PROTECTION SYSTEM IN ACCORDANCE WITH SECTION 903.2.2

CONSTRUCTION DOCUMENTS: (SEC 1603)  
THIS BLDG. SHALL BE DESIGNED IN ACCORDANCE WITH IBC SECTION 1609 AS A FULLY ENCLOSED BLDG. USING THE FOLLOWING INFORMATION:  
BASIC WIND SPEED (3 SECOND GUSTS) = 130 MPH (FIG 1609)  
IMPORTANCE FACTOR, CATEGORY II BLDG., IE = 1.00, IS = 1.0, IW = 1.00 (TBL 1604.5)  
EXPOSURE B, DETERMINATION OF WIND LOADS SHALL BE IN ACCORDANCE WITH IBC SEC 1609.4  
INTERNAL PRESSURE COEFFICIENT (ASCE 7-05 FIG. 6-5) ± 0.18  
SCHOOL BUILDING LIVE LOADS - TBL 1607.1:  
CORRIDORS ABOVE FIRST FLOOR: 80 PSF  
LOBBIES AND FIRST FLOOR CORRIDORS: 100 PSF  
CLASSROOMS: 40 PSF  
GROUND SNOW LOADS= 0 PSF (FIG. 1608.2)

BASED ON THE SURVEY OF THIS PROPERTY BY J.V. BURKES & ASSOCIATES, INC.  
LA REGISTERED LAND SURVEYOR NO. 4785  
F.I.R.M. COMMUNITY NO. 225205 0420E, F.I.R.M. DATE: 04-21-1999  
BUILDING IS LOCATED IN A SPECIAL FLOOD HAZARD AREA. IT IS LOCATED IN FLOOD ZONE A7, B.F.E 9.0'  
\*\* NOTE: ST. TAMMANY PARISH REQUIRES THE MIN. FINISHED FLOOR ELEVATION IN THIS AREA TO BE THE ABFE DETERMINED BY FEMA ZONE AE-10, ABFE 10, P.M.L.: LA-MM40, DATE 01-18-2006

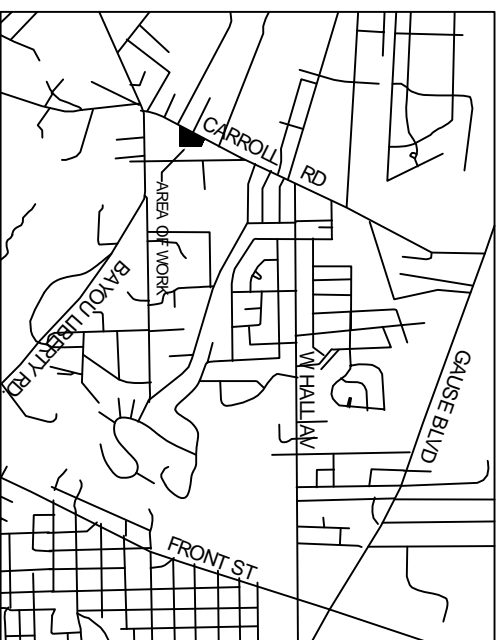
## NEW OFFICE BLDG., NON-SPRINKLED

### TOTAL S.F.: 3,000

### ZONED: LC

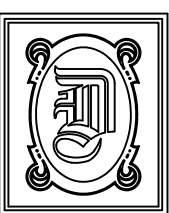
### LIGHT COMMERCIAL

BUILDING USE DESCRIPTION:  
THIS BUILDING SHALL BE USED FOR EDUCATIONAL, SUPERVISION AND PERSONAL CARE SERVICES FOR CHILDREN RANGING IN AGE FROM INFANTS TO TODDLERS.



#### INDEX OF DRAWINGS

DWG#	DRAWING NAME	REVISED
C-1	SITE PLAN	
C-2	PAVING PLAN	
C-3	DRAINAGE PLAN	
C-4	UTILITIES PLAN	
C-5	PAVING NOTES AND DETAILS	
L-1	LANDSCAPING PLAN	
S-1	FOUNDATION PLAN	
A-1	FLOOR PLAN	
A-2	CROSS SECTION	
A-3	ROOF & REFLECTED CEILING PLAN	
A-4	EXTERIOR ELEVATIONS	
A-5	EXTERIOR ELEVATIONS	
H-1	HANDICAP DETAILS	
H-2	HANDICAP DETAILS	
E-1	POWER PLAN	
E-2	LIGHTING PLAN	
M-1	MECHANICAL PLAN	
P-1	PLUMBING PLAN	



**DAMMON ENGINEERING, INC.**  
 1095 FLORIDA AVE. OFFICE: (985) 649-5832  
 SLIDELL, LA 70458 FAX: (985) 641-5950  
 WEBSITE: WWW.DAMMONENGINEERING.COM  
 EMAIL: DAMMONENG@BELLSOUTH.NET

DATE: 8-19-08  
JOB NO.: 1991

PRECIOUS JEWELS  
DAYCARE CENTER  
58074 CARROLL RD.  
SLIDELL, LA 70460